

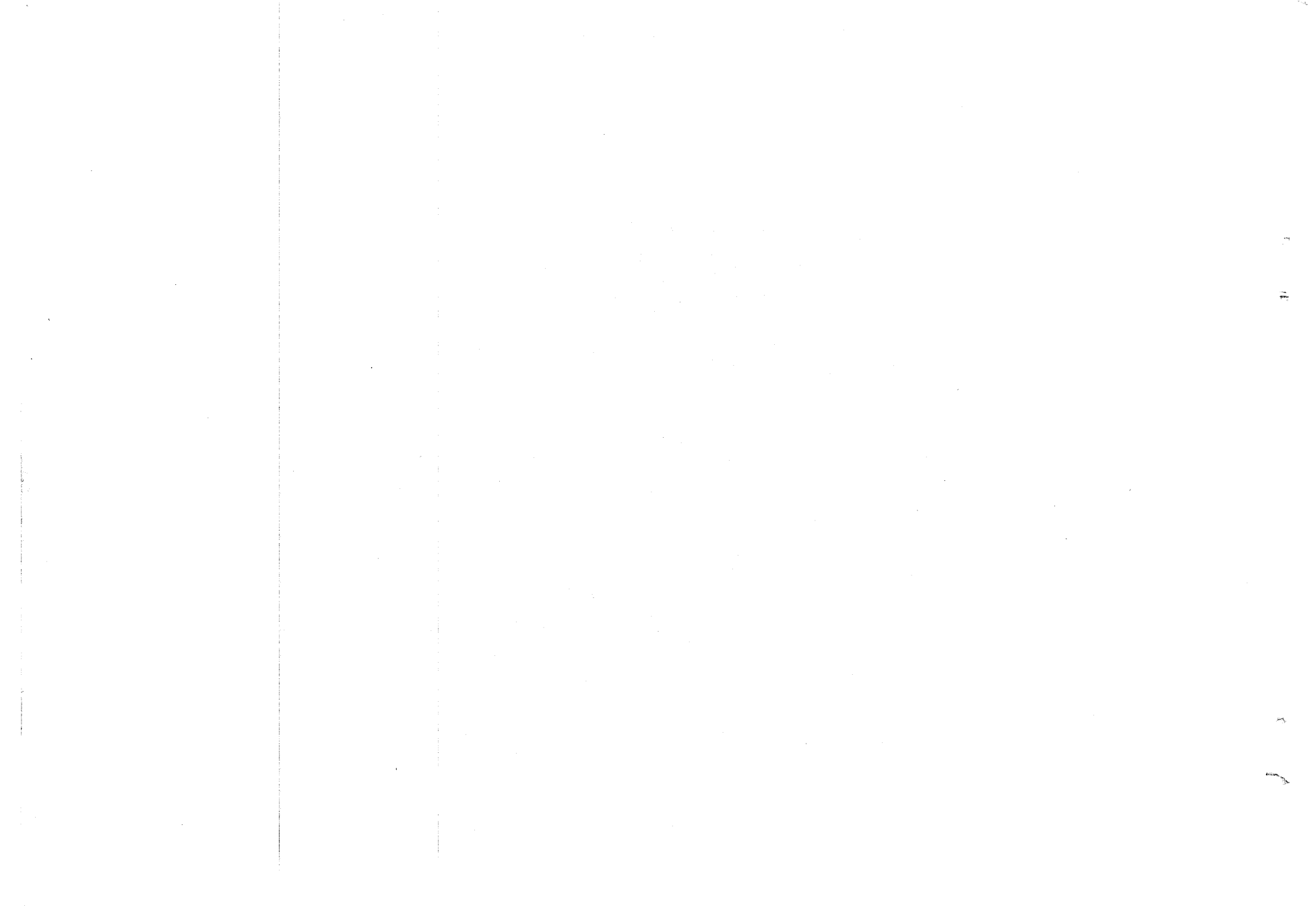
YAMAHA

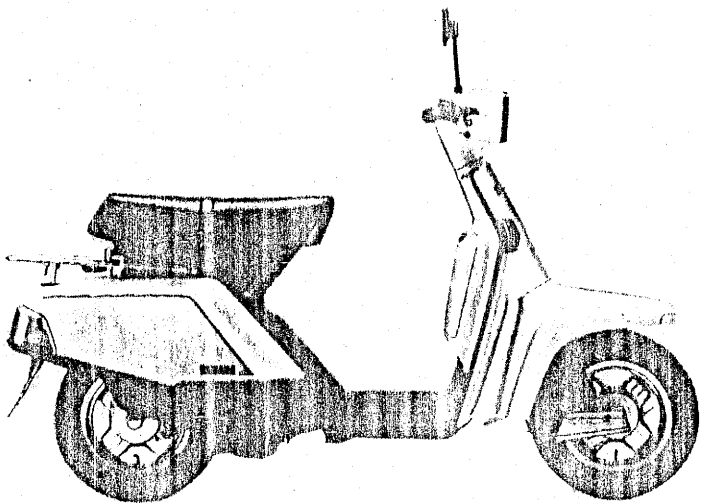
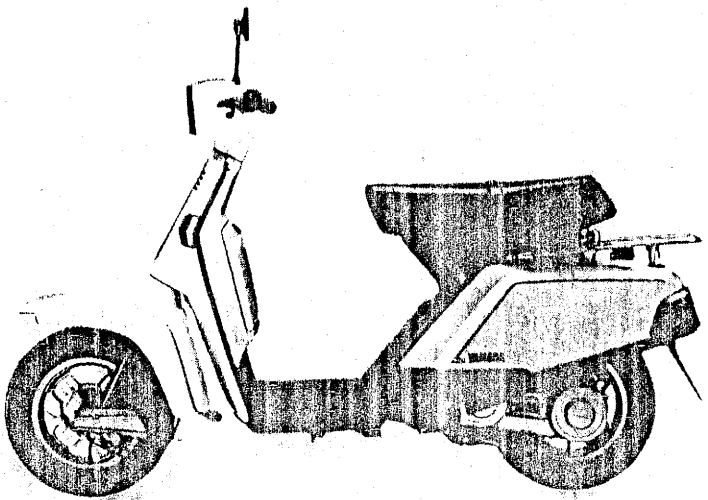
PARTS CATALOGUE

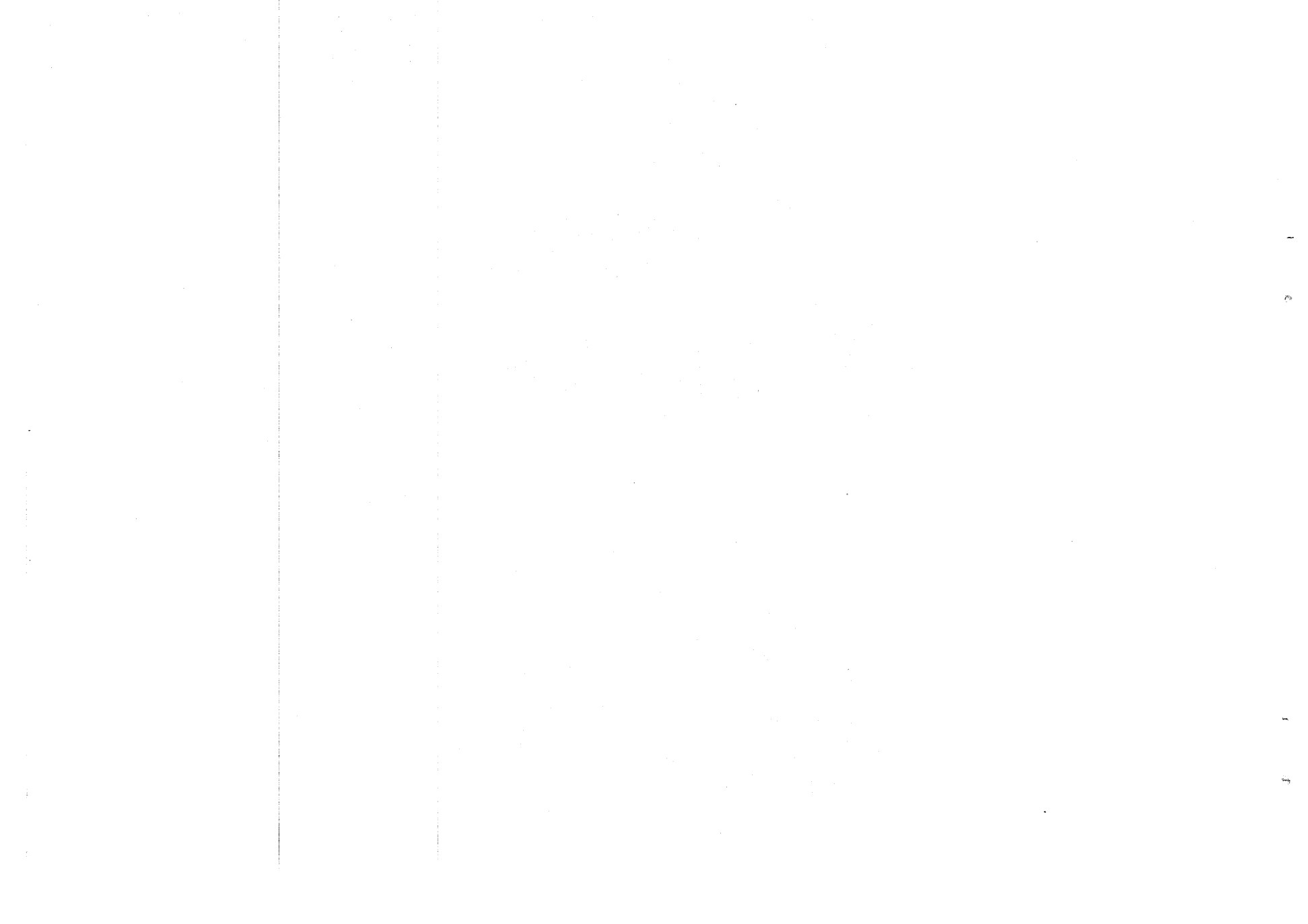
CV80E (5G3)

S. AFRICA

115G3-664E1







FOREWORD

This Parts Catalogue is related to the parts in use for the Yamaha CV 80E (5G3).
When you are ordering replacement parts for the CV 80E (5G3), refer to this Parts Catalogue and quote both part numbers and part names correctly.

1. Modifications or additions which have been made after issue of the Parts Catalogue will be announced in the Yamaha Parts News.
It is advisable that according to the Yamaha Parts News you make necessary corrections to the Parts Catalogue on hand to keep it up-to-date.

2. Abbreviations

The following abbreviations are used in this Parts Catalogue.

- U.R. Use size (thickness) and/or number as required.
- U.N. Use as many as you need.
- A.P. Alternate Parts
- L.M. Local Made
- F# Frame No. (Applicable machine No.)

3. The parts marked with (*) in the parts number column of this Catalogue are not supplied with by Yamaha, those have to be found locally.
4. Parts, which are to be supplied in the form of assemblies, are listed with an indentation of one letter's space, and a dot (.) is put against the name of each part.

EXAMPLE CARBURETOR ASS'Y
 . JET, pilot
 . NOZZLE, main

5. Indication of No. of constituent parts for assembly

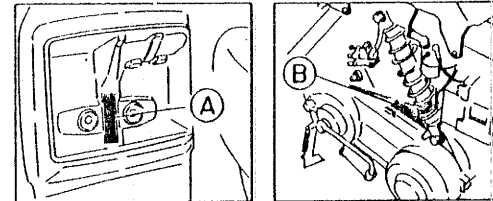
The numeral appearing to the right of each constituent part under the description indicates the quantity of such parts for each individual assembly unit.

EXAMPLE

Part No.	Description	Q'ty	Remarks
2F5-83310-60	FRONT FLASHER LIGHT ASS'Y	2	
115-83311-60	. BULB (6V-18W)	1	
1M1-83309-60	. REFLECTOR	1	

6. Initial Serial No. and Color Code

(A) Frame Serial No.	5G3-021551 and following
(B) Engine Serial No.	5G3-021551 and following



Color Code	Color Name	Abbreviate
1R	Rain Blue	RNB
36	Clean White	W
66	Sunshine Red	SR

7. Applicable colors of graphics are represented in the "Remarks" column by the letter(s) appropriately picked out of the full word(s) showing such colors.

EXAMPLE

Part No.	Description	Q'ty	Remarks
2N4-24110-00-X5	FUEL TANK COMP.	1	MAXIM RED
3J1-24240-10	. GRAPHIC, fuel tank set	1	for MXH

CONTENTS

ENGINE

Fig. 1	Cylinder	B2
Fig. 2	Crankshaft - Piston	B3
Fig. 3	C.D.I. Magneto	B4
Fig. 4	Air Shroud - Fan	B5
Fig. 5	Oil Pump	B6
Fig. 6	Intake	B7
Fig. 7	Carburetor	B8
Fig. 8	Exhaust	B9
Fig. 9	Crankcase	B10 ~ B11
Fig. 10	Kick Starter	B12
Fig. 11	Starting Motor	B13
Fig. 12	Clutch	B14
Fig. 13	Transmission	B15

CHASSIS

Fig. 14	Frame	C2 ~ C3
Fig. 15	Front Fender - Rear Fender	C4
Fig. 16	Side Cover	C5
Fig. 17	Oil Tank	C6
Fig. 18	Rear Suspension	C7
Fig. 19	Front Fork	C8 ~ C9
Fig. 20	Fuel Tank	C10
Fig. 21	Seat - Carrier	C11
Fig. 22	Front Wheel	C12 ~ C13
Fig. 23	Rear Wheel	C14
Fig. 24	Handlebar - Cable	C15
Fig. 25	Cowling	D2
Fig. 26	Stand - Footrest	D3
Fig. 27	Leg Shield	D4 ~ D5
Fig. 28	Flasher Light	D6
Fig. 29	Meter	D7
Fig. 30	Headlight	D8

Fig. 31	Taillight	D9
Fig. 32	Electrical 1	D10
Fig. 33	Electrical 2	D11
Fig. 34	Handle Switch - Lever	D12

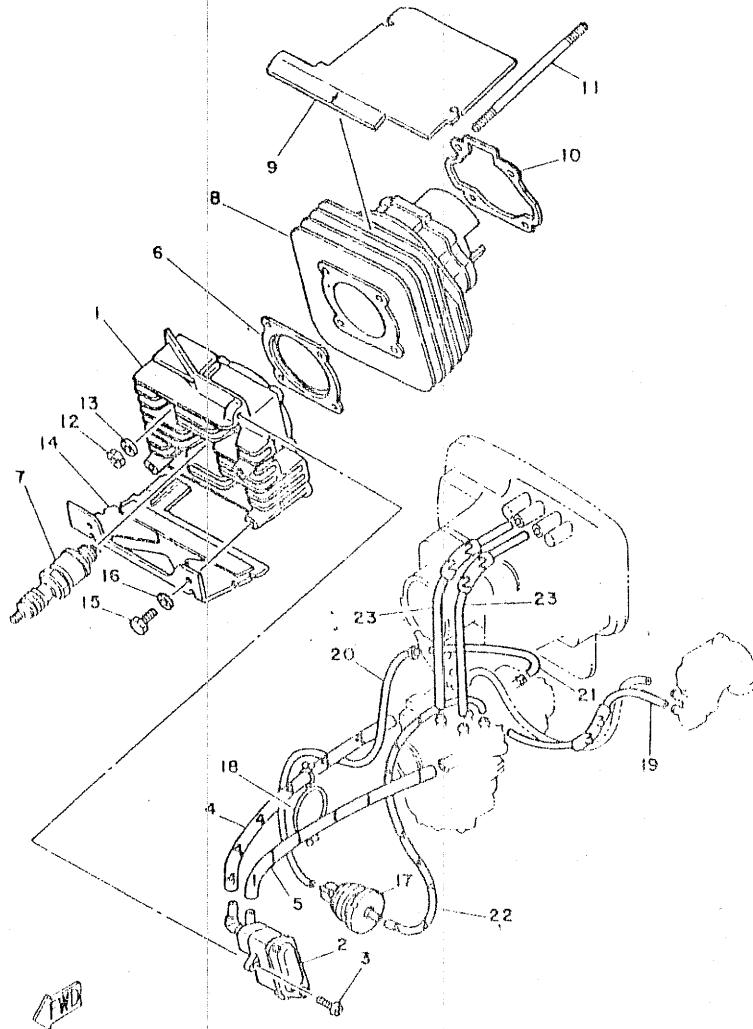
REPAIR KIT

Fig. 35	Repair Kit	D13
---------	------------	-----

INDEX

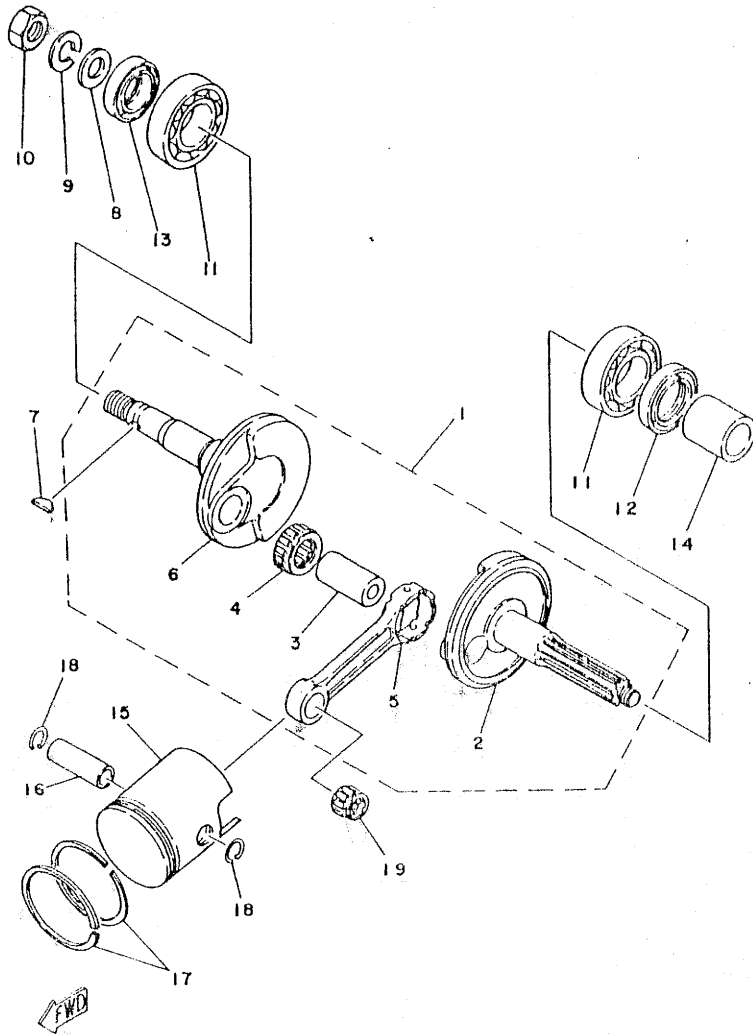
Numerical Index
Parts Name Index

FIG. 1 CYLINDER



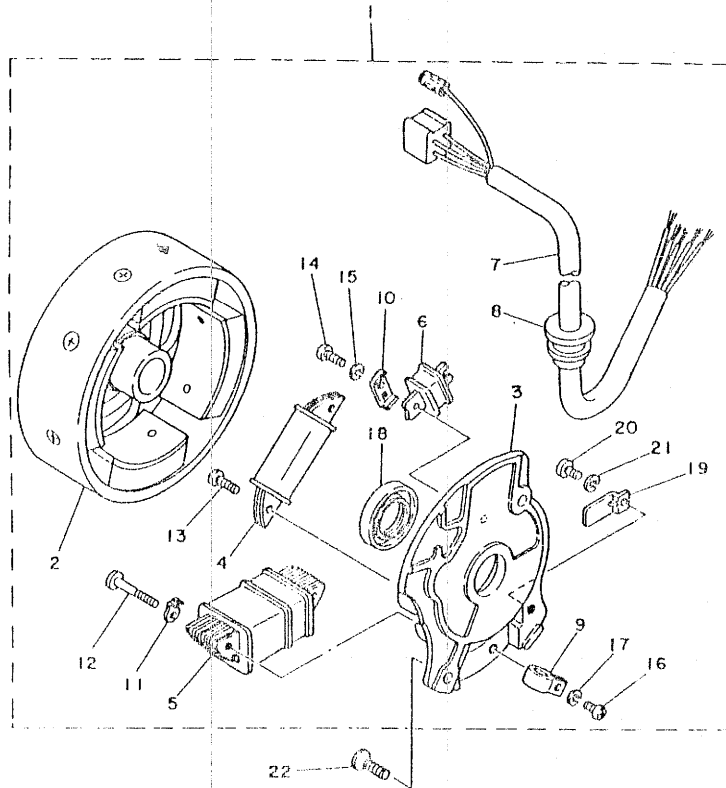
REF. NO.	PART NO.	DESCRIPTION	Q'TY	REMARKS
1	5G3-11111-00	HEAD, cylinder 1	1	
2	5G3-14108-01	BIMETAL CONTROL VALVE ASSY	1	
3	92501-06015	SCREW, Pan head	2	
4	90445-11560	HOSE	1	
5	90445-11561	HOSE	1	
6	3H8-11181-00	GASKET, cylinder head 1	1	
7	94701-00198	PLUG, sPark (NGK BPR6HS)	1	
8	5G3-11311-00	CYLINDER 1	1	
9	5G3-11161-00	ABSORBER 1	1	
10	5G3-11351-00	GASKET, cylinder	1	
11	90116-07356	BOLT, stud	4	
12	90170-07019	NUT	4	
13	90201-07650	WASHER, Plate	4	
14	5G3-1111H-00	COVER, cylinder head side 4	1	
15	97301-06016	BOLT	1	
16	92901-06600	WASHER, Plate	1	
17	5G3-14388-01	VALVE, vacuum control	1	
18	90464-35047	CLAMP	1	
19	5G3-24317-00	PIPE 7	1	
20	5G3-14309-00	JET COMP.	1	
21	90445-07592	HOSE	1	
22	90445-08593	HOSE	1	
23	5G3-14423-00	PIPE, suction 1	2	

FIG. 2 CRANKSHAFT.PISTON



REF. NO.	PART NO.	DESCRIPTION	Q'TY	REMARKS
1	5G3-11400-00	CRANKSHAFT ASSY	1	
2	5G3-11412-00	.CRANK 1	1	
3	257-11681-00	.PIN, crank 1	1	
4	93310-41809	.BEARING, cylindrical	1	
5	538-11651-01	.ROD, connectin	1	
6	5G3-11422-00	.CRANK 2	1	
7	90280-03017	KEY, woodruff	1	
8	92901-12600	WASHER, Plate	1	
9	92901-12100	WASHER, sPrin	1	
10	95301-12600	NUT	1	
11	93306-20418	BEARING (B6204CS)	2	
12	93102-26042	OIL SEAL	1	
13	93102-20009	OIL SEAL	1	
14	90387-203E3	COLLAR	1	
15	5G3-11631-00-97	PISTON (STD)	1	
	5G3-11635-00	PISTON (1ST O/S 0.25MM)	1	AP
	5G3-11636-00	PISTON (2ND O/S 0.50MM)	1	AP
16	527-11633-00	PIN, Piston	1	
17	5G3-11610-00	PISTON RING SET (STD)	1	
	5G3-11610-10	PISTON RING SET (1ST O/S)	1	AP
	5G3-11610-20	PISTON RING SET (2ND O/S)	1	AP
18	93450-13022	CIRCLIP	2	
19	93310-11268	BEARING, cylindrical	1	

FIG. 3 C.D.I MAGNETO

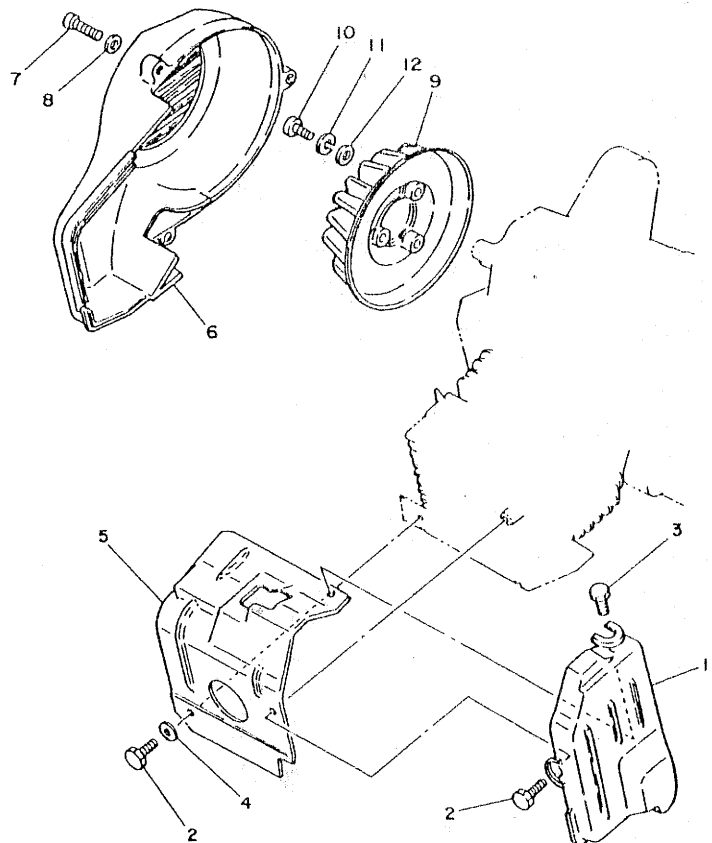


REF. NO.	PART NO.	DESCRIPTION	Q'TY	REMARKS
1	5G3-85500-M0	C.D.I. MAGNETO ASSY	1	
2	5G3-85550-M0	•ROTOR ASSY	1	
3	5G3-85561-M0	•BASE, magneto	1	
4	5G3-85520-M0	•COIL, charge	1	
5	5G3-81313-M0	•COIL, lighting 1	1	
6	5G3-85580-M0	•COIL, pulser	1	
7	5G3-8131X-M0	•CORD ASSY	1	
8	3L5-85564-M0	•GROMMET	1	
9	90461-05036	•CLAMP	1	
10	2T4-85568-M1	•TERMINAL, earth 1	1	
11	2T4-85569-M1	•TERMINAL, earth 2	1	
12	98511-04025	•SCREW, Pan head	2	
13	98501-04012	•SCREW, Pan head	2	
14	98503-04010	•SCREW, Pan head	1	
15	92901-04100	•WASHER, sPring	1	
16	98501-04006	•SCREW, Pan head	1	
17	92901-04100	•WASHER, sPring	1	
18	93102-19244	•OIL SEAL	1	
19	5G6-81328-M0	•CLAMP	1	
20	98501-04006	•SCREW, Pan head	1	
21	92901-04100	•WASHER, sPring	1	
22	92701-06012	•SCREW, flat head	2	

1/10/83

B4

FIG. 4 AIR SHROUD-FAN

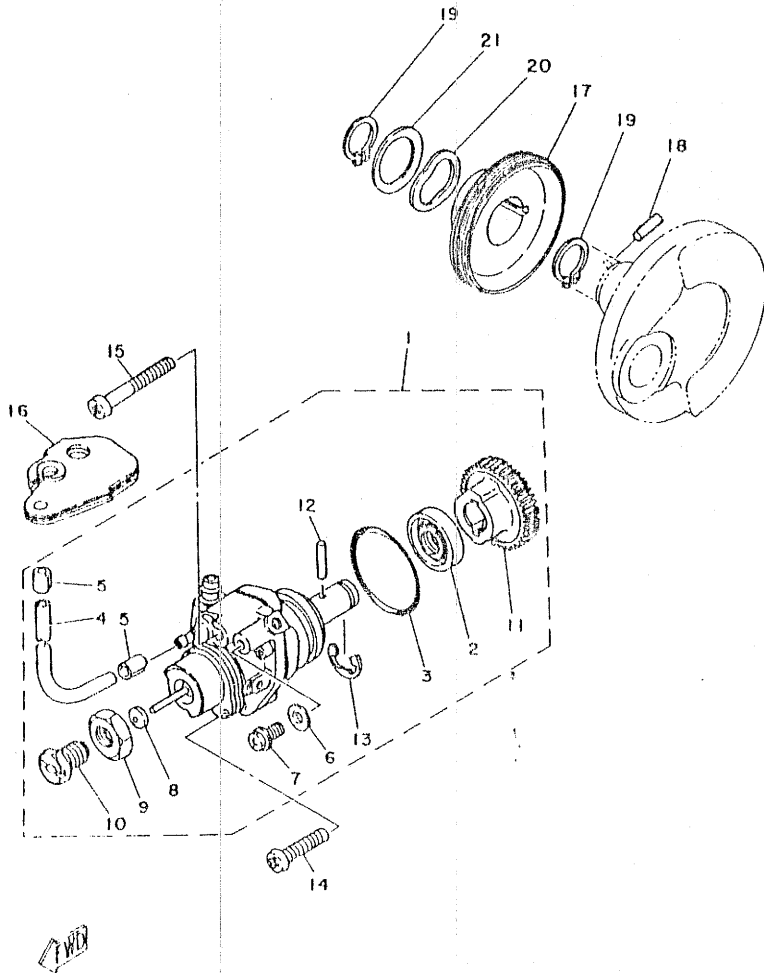


REF. NO.	PART NO.	DESCRIPTION	Q'TY	REMARKS
1	5G3-12651-00	AIR SHROUD, cylinder 1	1	
2	97301-06016	BOLT	2	
3	97301-06016	BOLT	1	
4	92901-06600	WASHER, Plate	1	
5	5G3-12652-00	AIR SHROUD, cylinder 2	1	
6	5G3-12653-00	AIR SHROUD, cylinder 3	1	
7	92501-06025	SCREW, Pan head	3	
8	92901-06600	WASHER, Plate	3	
9	5G3-12611-00	FAN	1	
10	92501-06015	SCREW, Pan head	3	
11	92901-06100	WASHER, sPrint	3	
12	92901-06600	WASHER, Plate	3	

FWD

B5

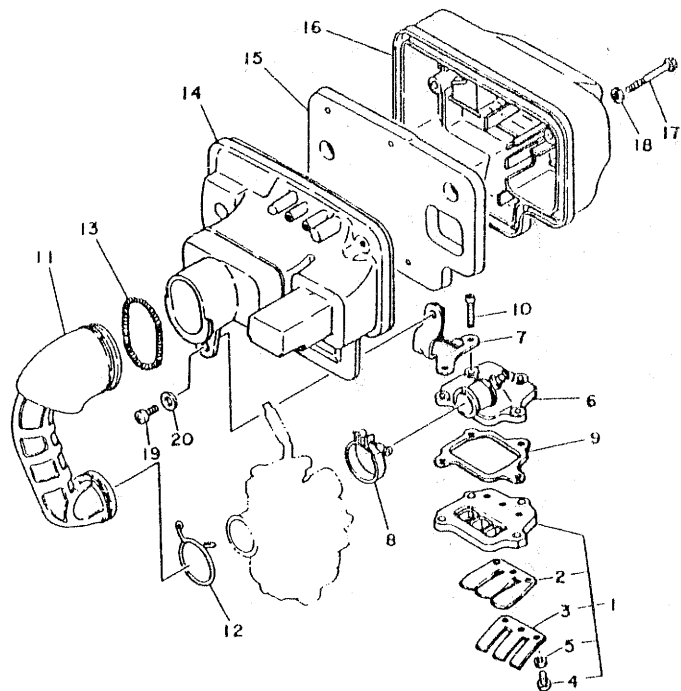
FIG. 5 OIL PUMP



REF. NO.	PART NO.	DESCRIPTION	Q'TY	REMARKS
1	5G3-13101-00	OIL PUMP ASSY	1	
2	93101-10001	.OIL SEAL	1	
3	93210-26240	.O-RING	1	
4	90445-05352	.HOSE	1	
5	90468-02033	.CLIP	2	
6	90430-04004	.GASKET	1	
7	90149-04135	.SCREW	1	
8	304-13130-00	.PLATE, adjusting	1	
9	90170-10105	.NUT	1	
10	90401-10029	.BOLT, union	1	
11	296-13124-00	.GEAR, worm wheel (56T)	1	
12	93603-14026	.PIN, dowel	1	
13	93430-07012	.CIRCLIP	1	
14	98501-05020	SCREW, Pan head	1	
15	98501-05035	SCREW, Pan head	1	
16	2E9-13174-00	HOLDER, oil Pipe	1	
17	5G3-13178-01	GEAR, Pump drive	1	
18	93603-12007	PIN, dowel	1	
19	93410-18015	CIRCLIP	2	
20	90206-19027	WASHER, wave	1	
21	296-15644-00	SHIM	1	

B6

FIG. 6 INTAKE

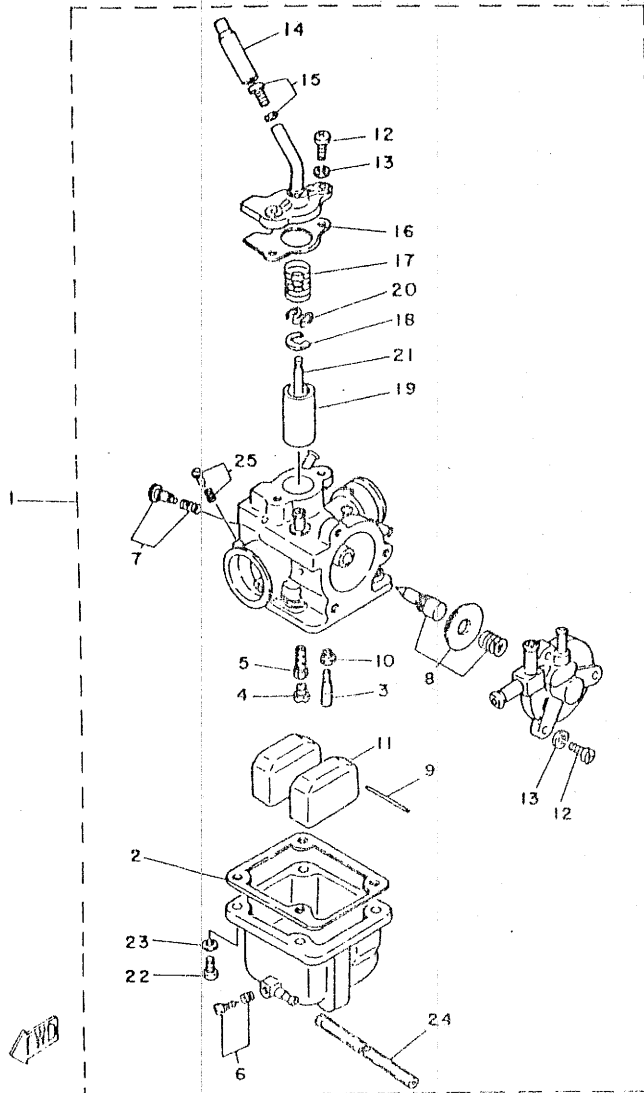


REF. NO.	PART NO.	DESCRIPTION	QTY	REMARKS
1	5G3-13610-00	REED VALVE ASSY	1	
2	5G3-13613-00	.REED, valve	1	
3	5G3-13616-00	.STOPPER, reed valve	1	
4	98501-03008	.SCREW, Pan head	3	
5	92901-03100	.WASHER, sPrinG	3	
6	5G3-13555-01	MANIFOLD, intake	1	
7	5G3-14493-01	STAY 1	1	
8	90460-32189	CLAMP, hose	1	
9	300-13621-01	GASKET, valve seat	1	
10	92501-06025	SCREW, Pan head	4	
11	5G3-14453-00	JOINT, air cleaner 1	1	
12	90467-20023	CLIP	1	
13	90501-06628	SPRING, comPression	1	
14	5G3-14411-00	CASE, air cleaner 1	1	
15	5G3-14451-00	ELEMENT, air cleaner	1	
16	5G3-14412-00	CAP, cleaner case 1	1	
17	97301-06045	BOLT	2	
18	90201-06336	WASHER, Plate	2	
19	92501-06015	SCREW, Pan head	1	
20	90201-06557	WASHER, Plate	1	

FWD

B7

FIG. 7 CARBURETOR

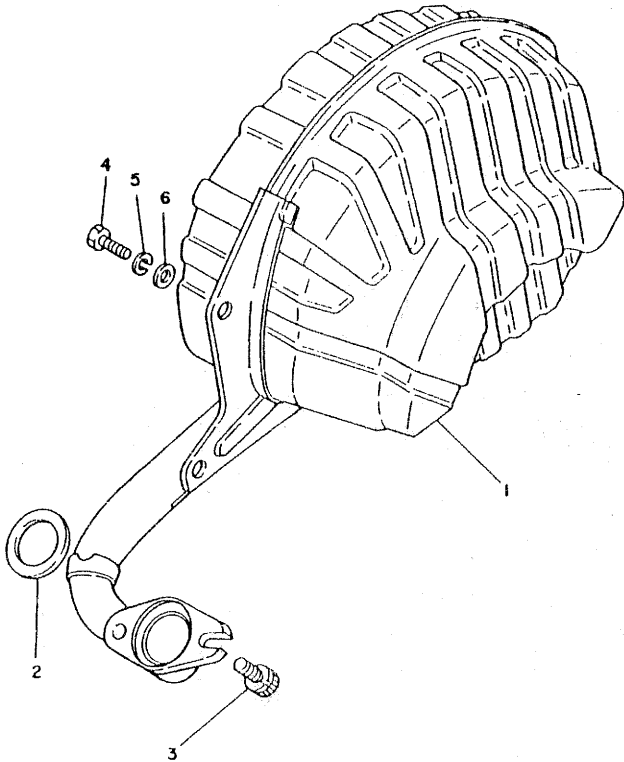


REF. NO.	PART NO.	DESCRIPTION	Q'TY	REMARKS
1	5G3-14101-01	CARBURETOR ASSY 1	1	
2	5G3-14184-00	GASKET, float chamber	1	
3	3L5-14142-50	JET, Pilot (#50.0)	1	
4	620-14231-22	JET, main (#110.0)	1	
5	3L7-14141-78	NOZZLE, main	1	
6	5G3-W1412-00	AIR SCREW SET	1	
7	5G3-W1411-00	THROTTLE SCREW SET	1	
8	5G1-W1414-00	STARTER PLUNGER SET	1	
9	620-14186-00	PIN, float	1	
10	5G3-14190-20	NEEDLE VALVE ASSY	1	
11	5G3-14185-00	FLOAT	1	
12	98501-04012	SCREW, Pan head	5	
13	92901-04100	WASHER, sPrin8	5	
14	1R0-14169-00	CAP	1	
15	5G3-W1415-00	ADJUSTER SET	1	
16	5G3-14198-00	GASKET	1	
17	3L6-14131-00	SPRING, throttle valve	1	
18	127-14137-00	CLIP	1	
19	5G3-14112-25	VALVE, throttle 1	1	
20	3L6-14136-01	SEAT, sPrin8	1	
21	4KB-14116-05	NEEDLE	1	
22	98501-04014	SCREW, Pan head	4	
23	92901-04100	WASHER, sPrin8	4	
24	1B3-14196-00	PIPE	1	
25	5G3-W1412-00	AIR SCREW SET	1	

B8

FIG. 8 EXHAUST

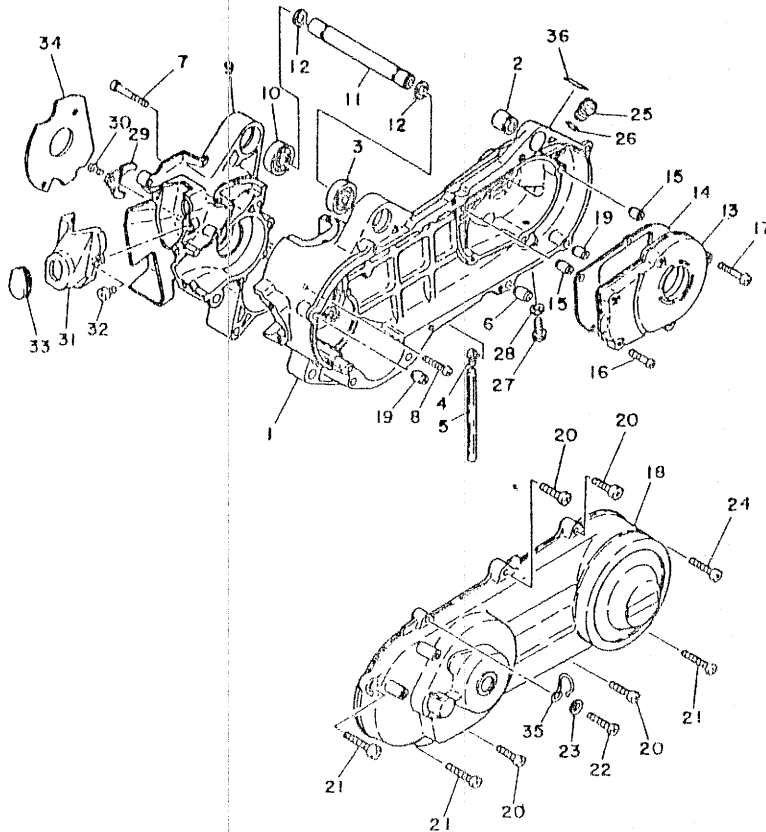
REF. NO.	PART NO.	DESCRIPTION	Q'TY	REMARKS
1	5G3-14610-00	EXHAUST PIPE ASSY 1	1	
2	132-14613-00	GASKET, exhaust Pipe	1	
3	90109-08629	BOLT	2	
4	97301-08020	BOLT	2	
5	92901-08100	WASHER, Spring	2	
6	92901-08600	WASHER, Plate	2	



FWD

B9

FIG. 9 CRANKCASE

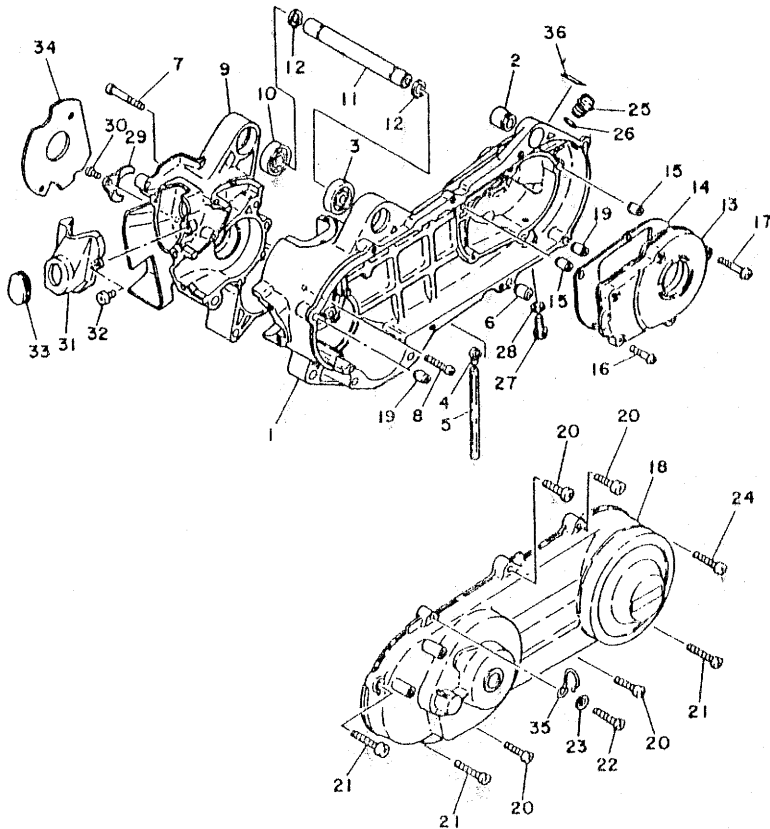


REF. NO.	PART NO.	DESCRIPTION	Q'TY	REMARKS
1	5G3-15111-00	CRANKCASE 1	1	
2	5G3-22216-00	BUSH, rear shock absorber	1	
3	93306-00306	BEARING	1	
4	498-16371-00	BREATHER	1	
5	90446-07008	HOSE	1	
6	91830-22016	PIN, dowel	2	
7	92501-06045	SCREW, Pan head	5	
8	92501-06035	SCREW, Pan head	1	
9	5G3-15121-00	CRANKCASE 2	1	
10	93306-00306	BEARING	1	
11	5G3-15317-00	SPACER, engine mount	1	
12	93410-17008	CIRCLIP	2	
13	5G3-15421-00	COVER, crankcase 2	1	
14	5G3-15461-00	GASKET, crankcase cover 2	1	
15	91830-21014	PIN, dowel	2	
16	92501-06025	SCREW, Pan head	3	
17	92501-06035	SCREW, Pan head	2	
18	5G3-15411-00-35	COVER, crankcase 1	1	silver
19	91830-21014	PIN, dowel	2	
20	92501-06030	SCREW, Pan head	4	
21	92501-06040	SCREW, Pan head	3	
22	92501-06035	SCREW, Pan head	1	
23	92901-06600	WASHER, Plate	1	
24	92501-06035	SCREW, Pan head	1	
25	2T4-15363-00	PLUG, oil	1	
26	93210-14104	O-RING	1	
27	95801-08016	BOLT, flange	1	
28	90430-08119	GASKET	1	

B10

FIG. 9 CRANKCASE

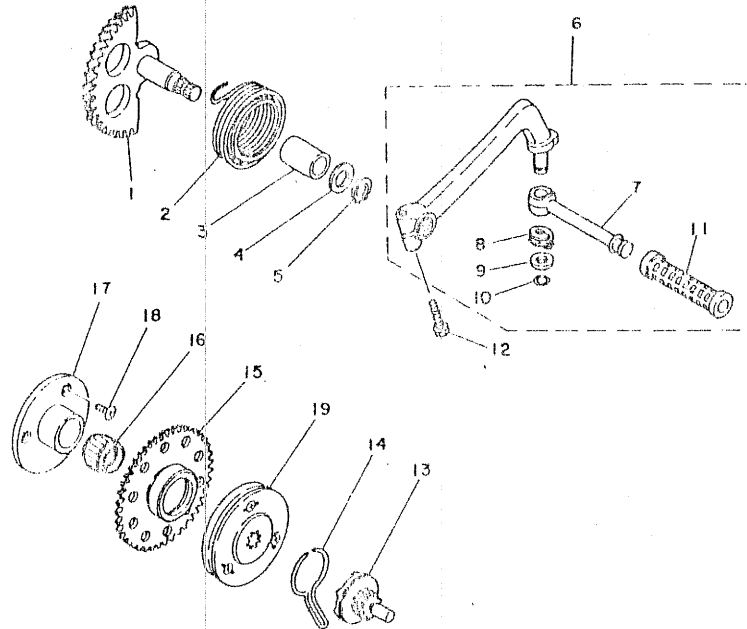
REF. NO.	PART NO.	DESCRIPTION	Q'TY	REMARKS
29	5G3-15128-00	HOLDER	1	
30	92501-06012	SCREW, Pan head	1	
31	5G3-15416-00	COVER, oil pump	1	
32	92501-06015	SCREW, Pan head	2	
33	90480-01300	GROMMET	1	
34	5G3-15462-00	GASKET, crankcase cover 3	1	
35	5G3-26379-00	GUIDE, cable	1	
36	5G3-15191-00	PLATE	1	



FWD

B11

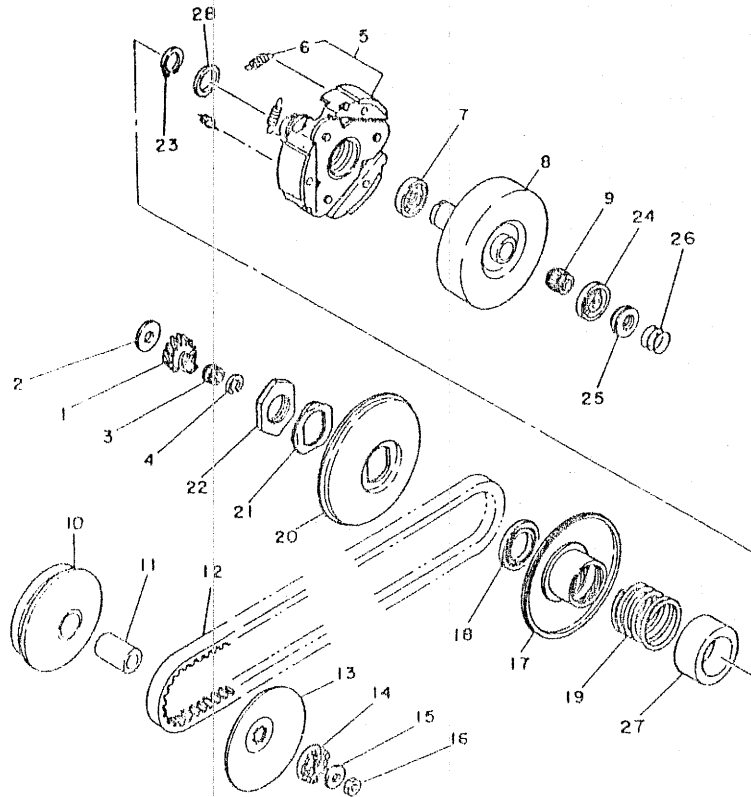
FIG. 10 KICK STARTER



REF. NO.	PART NO.	DESCRIPTION	Q'TY	REMARKS
1	563-15601-00	KICK SHAFT ASSY (66T)	1	
2	90508-32356	SPRING, torsion	1	
3	90380-15083	BUSH, solid	1	
4	90201-154E9	WASHER, Plate	1	
5	93410-15005	CIRCLIP	1	
6	563-15620-00	KICK CRANK ASSY	1	
7	122-15612-02	LEVER, kick	1	
8	90504-18005	SPRING, compression	1	
9	90209-10108	WASHER	1	
10	93440-10028	CIRCLIP	1	
11	156-15618-01	COVER, kick lever	1	
12	97311-06025	BOLT	1	
13	563-15630-00	KICK PINION ASSY (9T)	1	
14	2E9-15673-00	CLIP	1	
15	563-15524-02	WHEEL, starter (66T)	1	
16	93310-232JB	BEARING, cylindrical	1	
17	563-15544-01	STAY 1	1	
18	92701-05015	SCREW, flat head	3	
19	563-15570-02	STARTER CLUTCH ASSY	1	

B12

FIG. 12 CLUTCH



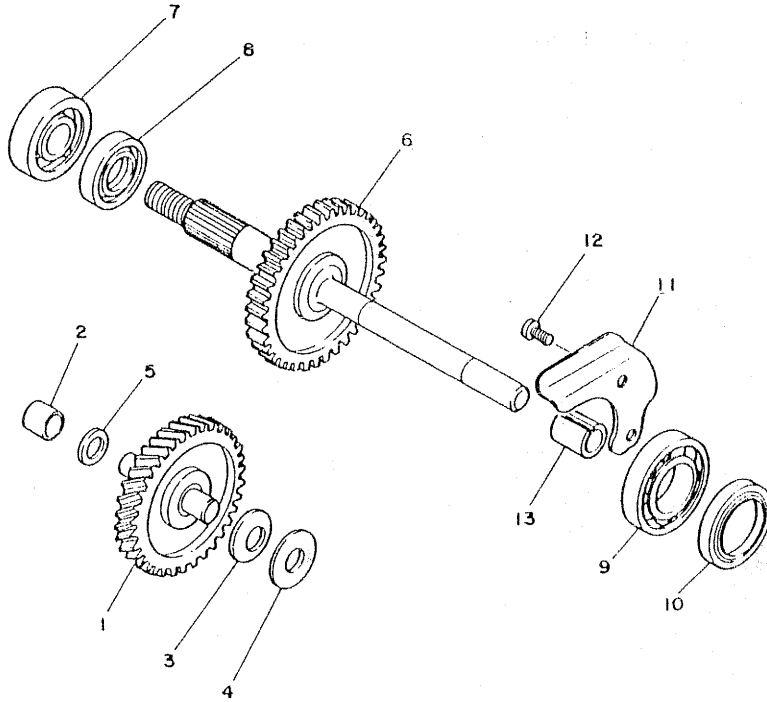
REF. NO.	PART NO.	DESCRIPTION	Q'TY	REMARKS
1	5G3-16111-00	GEAR, Primary drive (18T)	1	
2	90201-14224	WASHER, Plate	1	
3	93310-21AJ4	BEARING, cylindrical	1	
4	93450-18077	CIRCLIP	1	
5	5G3-16620-00	CLUTCH CARRIER ASSY	1	
6	5G3-16626-00	SPRING, clutch weight	3	
7	93107-35011	OIL SEAL	1	
8	5G3-16611-00	CLUTCH HOUSING COMP.	1	
9	93310-41AJ6	BEARING, cylindrical	1	
10	5G3-17601-00	PRIMARY SHEAVE ASSY	1	
11	90387-165E7	COLLAR	1	
12	5G3-17641-00	V-BELT	1	
13	5G3-17611-00	SHEAVE, Primary fixed	1	
14	5G3-15657-00	CLUTCH, one	1	
15	90208-10012	WASHER, conical sPring	1	
16	90170-10219	NUT	1	
17	5G3-17670-00	SECONDARY SLIDING SHEAVE	1	
18	93109-41028	OIL SEAL	1	
19	90501-40627	SPRING, comPression	1	
20	5G3-17661-00	SHEAVE, secondary fixed	1	
21	90215-36190	WASHER, lock	1	
22	90170-36279	NUT	1	
23	93440-25019	CIRCLIP	1	
24	93101-25103	OIL SEAL	1	
25	93342-21410	BEARING	1	
26	90501-12664	SPRING, comPression	1	
27	5G3-17684-00	SEAT, secondary sPring	1	
28	156-17417-00-03	SHIM 1 (0.3T)	1	

7/1/73

B14

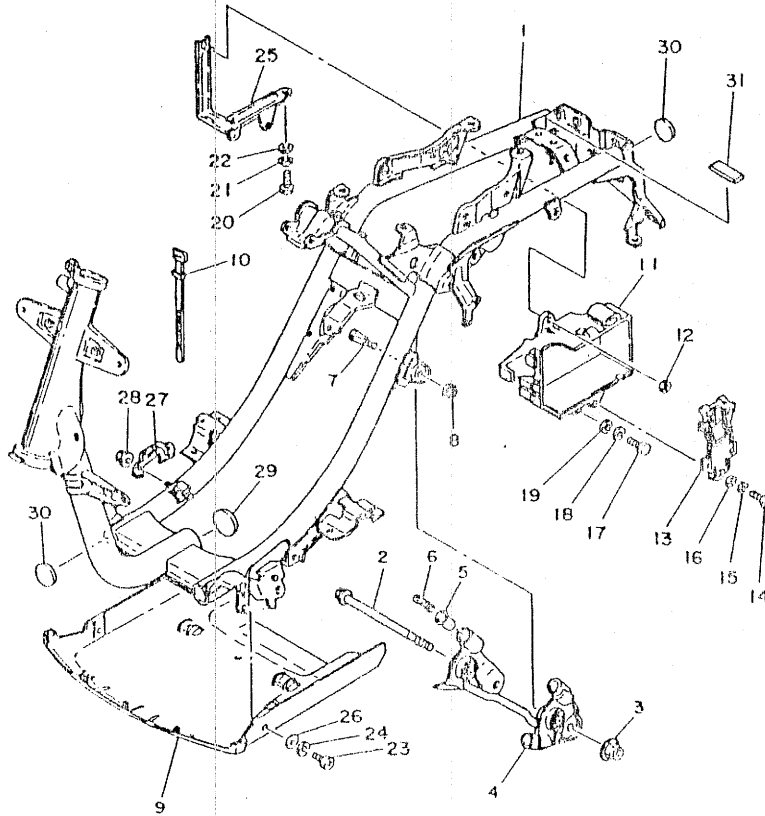
FIG. 13 TRANSMISSION

REF. NO.	PART NO.	DESCRIPTION	QTY	REMARKS
1	5G3-17410-00	MAIN AXLE ASSY (14T-52T)	1	
2	90384-10146	BUSH, bimetal formed	1	
3	90208-12027	WASHER, conical spring	1	
4	90201-12704	WASHER, Plate	1	
5	90201-105E8	WASHER, Plate	1	
6	5G3-17420-00	DRIVE AXLE ASSY (47T)	1	
7	93306-20310	BEARING (B6203RS)	1	
8	93102-22240	OIL SEAL	1	
9	93306-00510	BEARING	1	
10	93102-32241	OIL SEAL	1	
11	5G3-17471-00	PLATE, cover	1	
12	92501-06010	SCREW, Pan head	2	
13	90387-136E5	COLLAR	1	



FWD

FIG. 14 FRAME

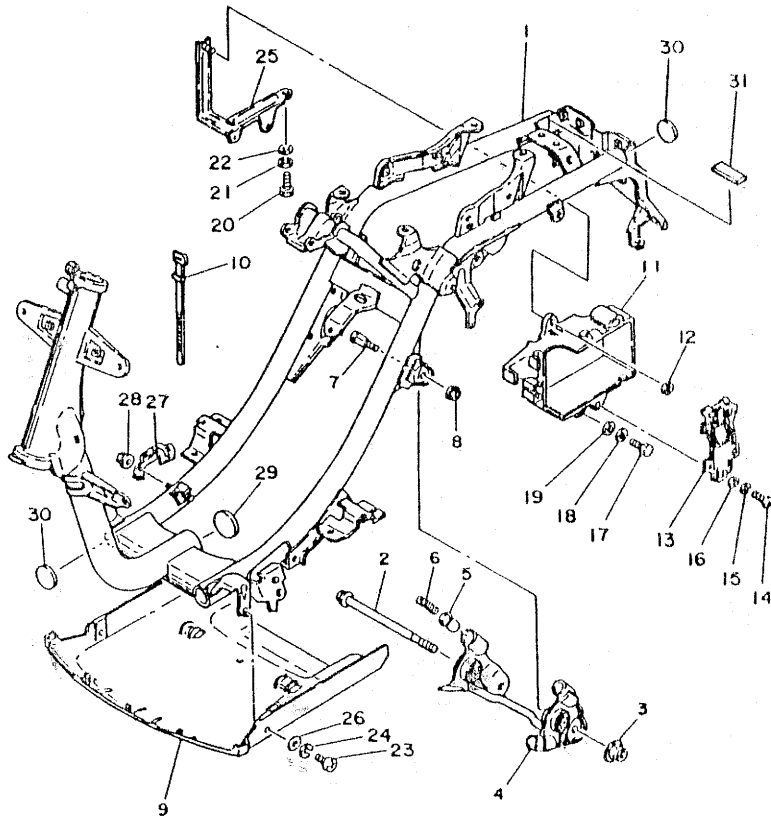


REF. NO.	PART NO.	DESCRIPTION	Q'TY	REMARKS
1	563-21110-01-33	FRAME COMP	1	yamaha black
2	90105-12193	BOLT, washer based	1	
3	90185-12093	NUT, self-locking	1	
4	563-21410-02	ENGINE BRACKET COMP.	1	
5	214-2139X-00	DAMPER	3	
6	90501-29517	SPRING, compression	3	
7	563-21481-00	BOLT, engine mounting 1	2	
8	95611-10100	NUT, u	2	
9	563-21471-00	PROTECTOR, engine	1	
10	437-83936-10	BAND, switch cord	3	
11	563-21171-02	BOX, tool	1	
12	90185-06098	NUT, self-locking	1	
13	563-21543-00	PLATE 1	1	
14	98501-05016	SCREW, Pan head	1	
15	92902-05100	WASHER, spring	1	
16	90201-05764	WASHER, Plate	1	
17	97301-06016	BOLT	1	
18	92901-06100	WASHER, spring	1	
19	92901-06600	WASHER, Plate	1	
20	97301-06016	BOLT	1	
21	92901-06100	WASHER, spring	1	
22	90201-06050	WASHER, Plate	1	
23	92506-06016	SCREW, Pan head	2	
24	92905-06100	WASHER, spring	2	
25	563-21395-02	BRACKET, battery box 3	1	
26	90201-061E8	WASHER, Plate	2	
27	563-21162-00	HOLDER, clutch cable	1	
28	95701-06100	NUT, flange	1	

C2

FIG. 14 FRAME

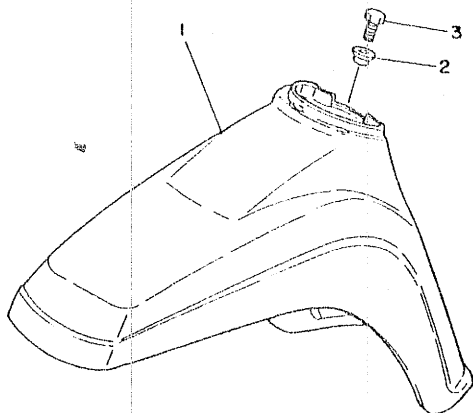
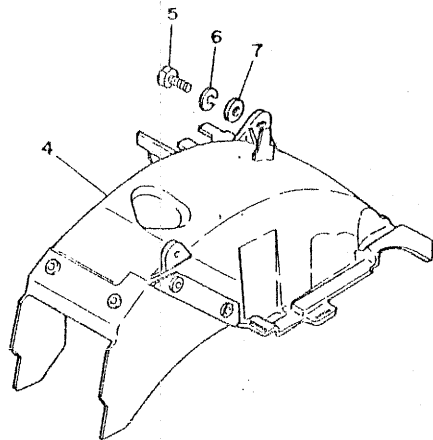
REF. NO.	PART NO.	DESCRIPTION	QTY	REMARKS
29	5G3-2117F-00	COVER	1	
30	5G3-2139R-00	COVER 2	4	
31	5G3-21747-00	DAMPER	1	



C3

FIG. 15 FRONT FENDER, REAR FENDER

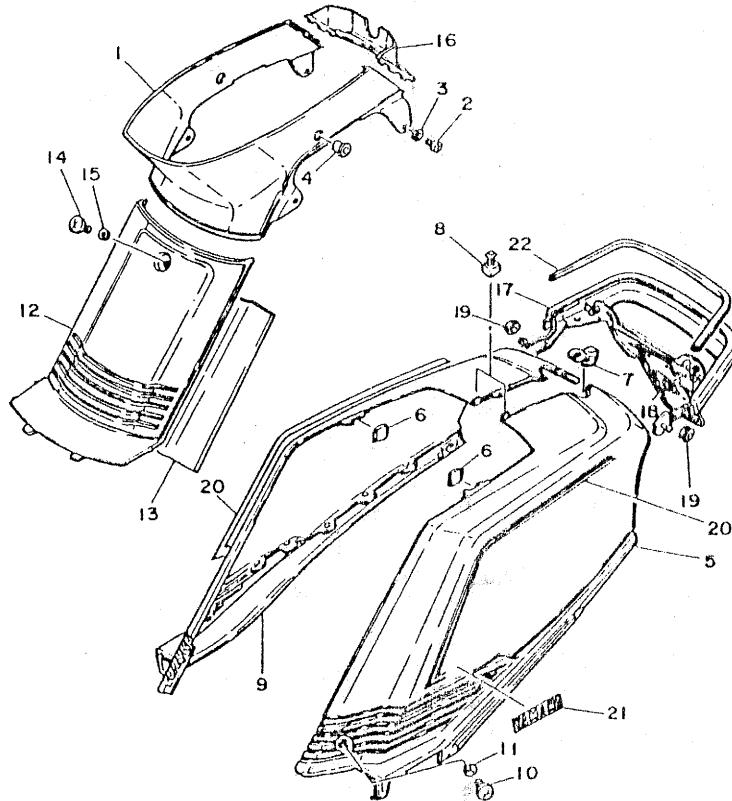
REF. NO.	PART NO.	DESCRIPTION	Q'TY	REMARKS
1	5G3-21511-01-1R	FENDER, front	1	UR rain blue
	5G3-21511-01-36	FENDER, front	1	UR clean white
	5G3-21511-01-66	FENDER, front	1	UR sunshine red
2	90387-06681	COLLAR	3	
3	97301-06016	BOLT	3	
4	5G3-W2162-00	MUD GUARD COMP.	1	
5	97301-06016	BOLT	2	
6	92901-06100	WASHER, spring	2	
7	90201-06050	WASHER, plate	2	



WVA

C4

FIG. 16 SIDE COVER



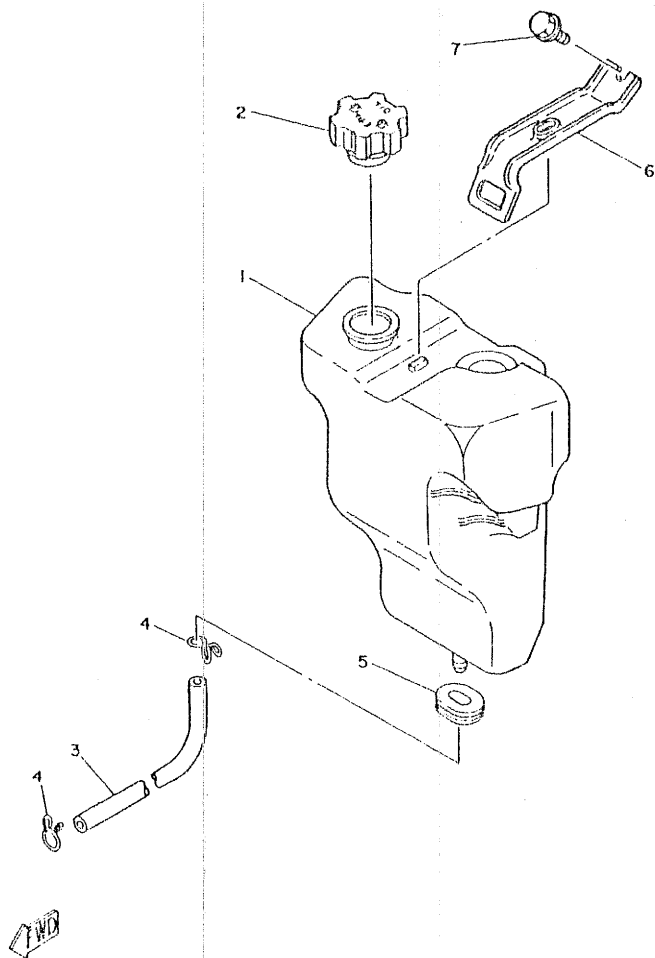
REF. NO.	PART NO.	DESCRIPTION	Q'TY	REMARKS
1	5G3-21711-00	COVER, side 1	1	
2	92501-06012	SCREW, Pan head	4	
3	90201-06050	WASHER, Plate	4	
4	5G3-21719-00	GROMMET	2	
5	5G3-W2172-00-1R	SIDE COVER 2	1	UR rain blue
	5G3-W2172-00-36	SIDE COVER 2	1	UR clean white
	5G3-W2172-00-66	SIDE COVER 2	1	UR sunshine red
6	2E9-24182-00	DAMPER, locatin& 2	2	
7	5G3-21729-00	CLAMP, damPer	1	
8	5G3-21755-00	CLAMP, damPer	1	
9	5G3-W2173-00-1R	SIDE COVER 3	1	UR rain blue
	5G3-W2173-00-36	SIDE COVER 3	1	UR clean white
	5G3-W2173-00-66	SIDE COVER 3	1	UR sunshine red
10	90149-06007	SCREW	2	
11	4U5-2176E-00	PLATE	2	
12	5G3-21741-01	COVER, side 4	1	
13	5G3-21778-00	DAMPER, locatin& 1	1	
14	90149-06007	SCREW	1	
15	4U5-2176E-00	PLATE	1	
16	5G3-2171E-01	COVER, side 5	1	
17	5G3-2172G-02-T2	PANEL 2	1	low Gloss Grey
18	95701-06100	NUT, flan&e	2	
19	90480-22084	GROMMET	2	
20	5G3-21790-00	EMBLEM SET	1	
21	5G3-21781-00	EMBLEM 1	2	UR for w,sr
	3L8-2118E-01	EMBLEM 1	2	UR for rnb
22	5G3-21746-01	DAMPER	1	

FWD

C5

FIG. 17 OIL TANK

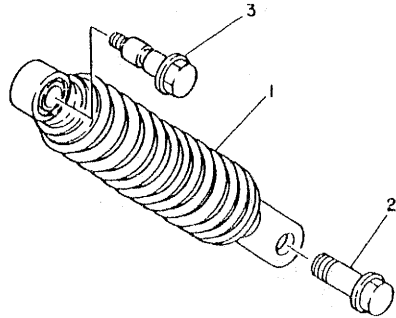
REF. NO.	PART NO.	DESCRIPTION	Q'TY	REMARKS
1	5G3-21751-00	TANK, oil	1	
2	3L5-21770-01	OIL TANK CAP ASSY	1	
3	90445-09090	HOSE	1	
4	90467-08003	CLIP	2	
5	90480-01288	GROMMET	1	
6	5G3-21776-00	BAND, tank filling	1	
7	95801-06012	BOLT, flange	1	



C6

FIG. 18 REAR SUSPENSION

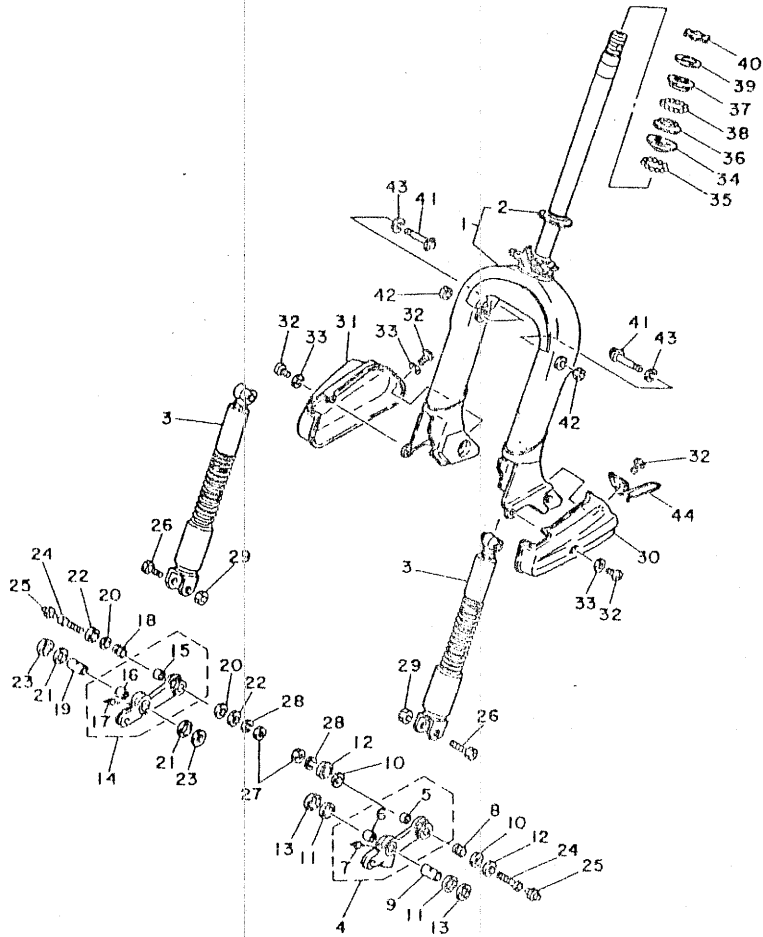
REF. NO.	PART NO.	DESCRIPTION	Q'TY	REMARKS
1	5G3-22210-01	SHOCK ABSORBER ASSY, rear	1	
2	5G3-22242-00	BOLT 2	1	
3	5G3-22241-02	BOLT 1	1	



FWD

C7

FIG. 19 FRONT FORK



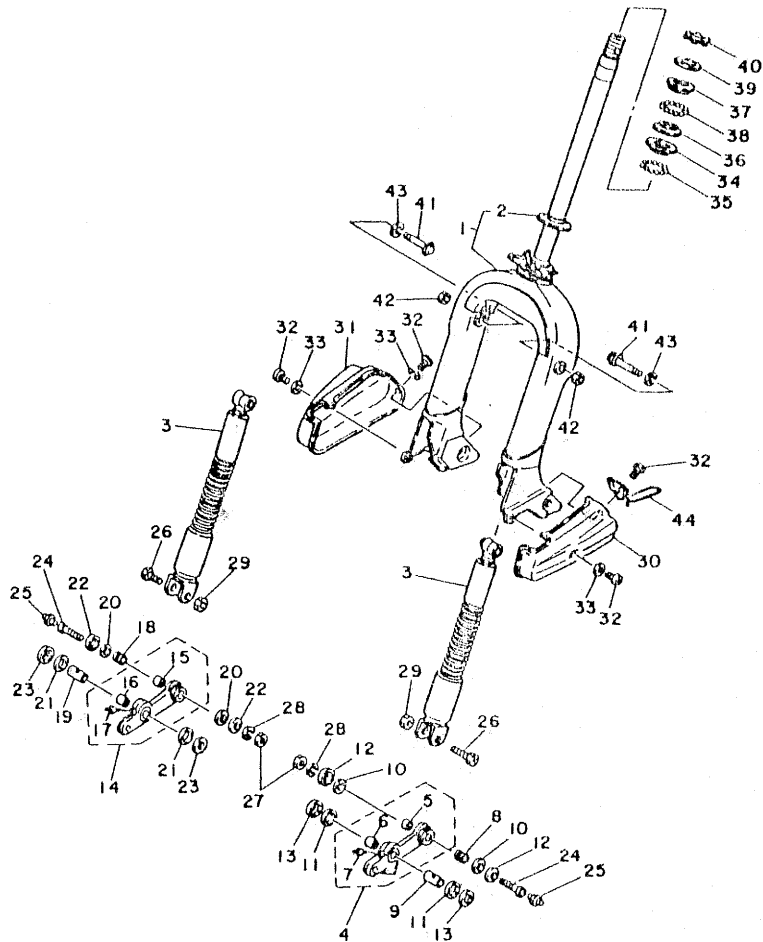
REF. NO.	PART NO.	DESCRIPTION	Q'TY	REMARKS
1	5G3-23310-00-33	FORK COVER COMP.	1	yamaha black
2	156-23411-00	•RACE, ball 1	1	
3	5G3-23350-01	SHOCK ADSORBER ASSY	2	
4	5G3-23361-00	ARM 1	1	
5	296-23362-09	•BUSH 1	1	
6	296-23372-09	•BUSH 2	1	
7	93700-04002	•NIPPLE, Grease	1	
8	296-23363-01	COLLAR 1	1	
9	296-23364-01	COLLAR 2	1	
10	296-23381-01	SEAL, dust 1	2	
11	296-23382-01	SEAL, dust 2	2	
12	116-23383-00	COVER, dust seal 1	2	
13	116-23384-00	COVER, dust seal 2	2	
14	5G3-23371-00	ARM 2	1	
15	296-23362-09	•BUSH 1	1	
16	296-23372-09	•BUSH 2	1	
17	93700-04002	•NIPPLE, Grease	1	
18	296-23363-01	COLLAR 1	1	
19	296-23364-01	COLLAR 2	1	
20	296-23381-01	SEAL, dust 1	2	
21	296-23382-01	SEAL, dust 2	2	
22	116-23383-00	COVER, dust seal 1	2	
23	116-23384-00	COVER, dust seal 2	2	
24	90401-10035	BOLT, union	2	
25	93700-06004	NIPPLE, Grease	2	
26	90155-08002	SCREW, flat fillister	2	
27	95301-10700	NUT	2	
28	92901-10100	WASHER, sPring	2	

YAMAHA

CB

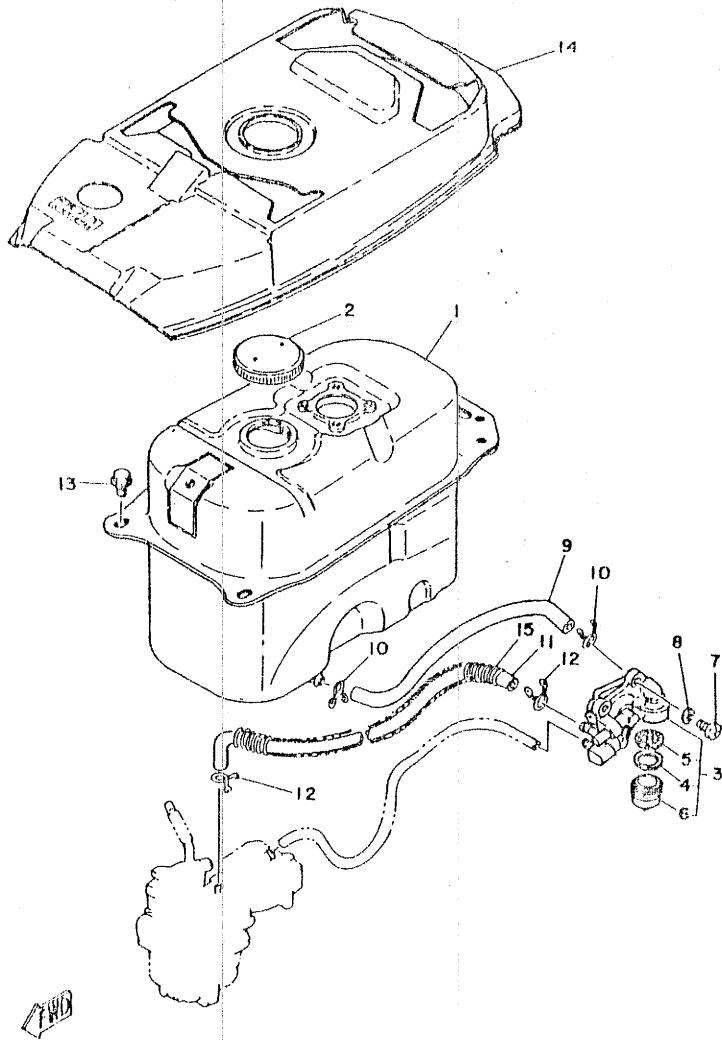
FIG. 19 FRONT FORK

REF. NO.	PART NO.	DESCRIPTION	Q'TY	REMARKS
29	95301-08700	NUT	2	
30	5G3-23338-00	COVER, front susPension 1	1	silver
31	5G3-23339-00	COVER, front susPension 2	1	silver
32	98903-06012	SCREW, bind	4	
33	92901-06200	WASHER, Plain	3	
34	156-23412-00	RACE, ball 2	1	
35	93501-04011	BALL	19	
36	122-23412-00	RACE, ball 2	1	
37	122-23411-00	RACE, ball 1	1	
38	93503-16010	BALL	22	
39	122-23416-00	COVER, ball race 2	1	
40	90179-25033	NUT	2	
41	90109-08607	BOLT	2	
42	95301-08700	NUT	2	
43	92901-08100	WASHER, sPring	2	
44	5G3-23317-00	HOLDER, cable	1	



C9

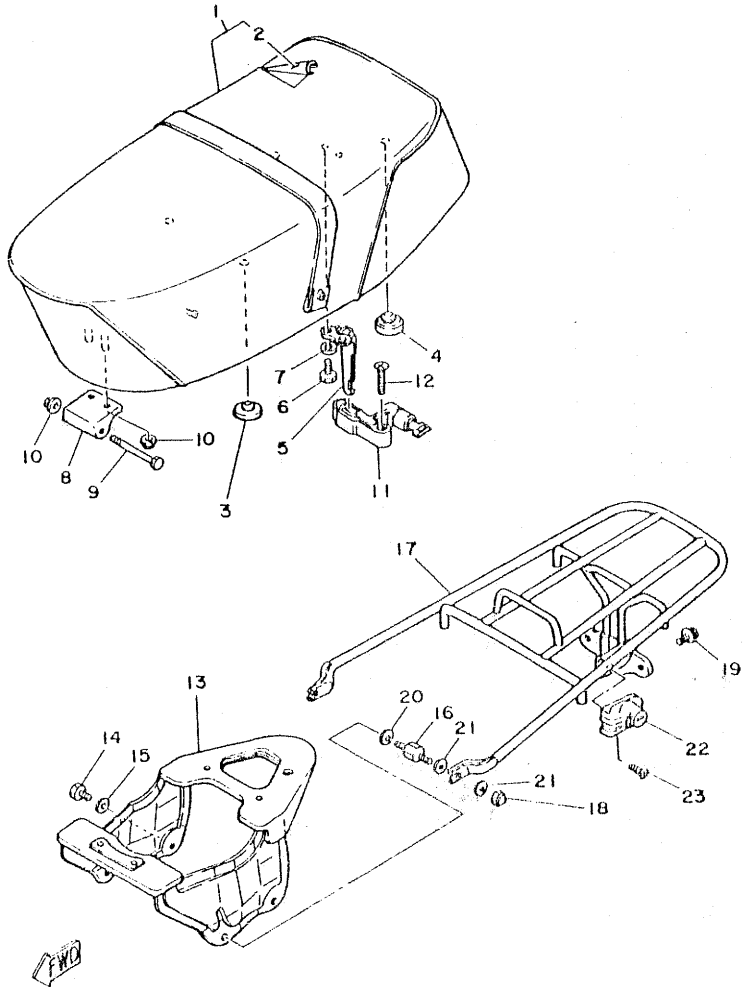
FIG. 20 FUEL TANK



REF. NO.	PART NO.	DESCRIPTION	Q'TY	REMARKS
1	5G3-24110-00	FUEL TANK COMP.	1	
2	296-24610-00	CAP ASSY	1	
3	5G3-24500-00	FUEL COCK ASSY 1	1	
4	2E9-24522-10	•GASKET	1	
5	4K5-24561-00	•NET, filter	1	
6	4K5-24521-00	•CUP, filter	1	
7	92501-06012	SCREW, Pan head	2	
8	92901-06100	WASHER, sPrinG	2	
9	5G3-24311-00	PIPE, fuel 1	1	
10	90467-08003	CLIP	2	
11	90445-09068	HOSE	1	
12	90467-08003	CLIP	2	
13	95601-06012	BOLT, flange	4	
14	5G3-24198-01	SEAT, rubber	1	
15	90501-08410	SPRING, comPression	1	

C10

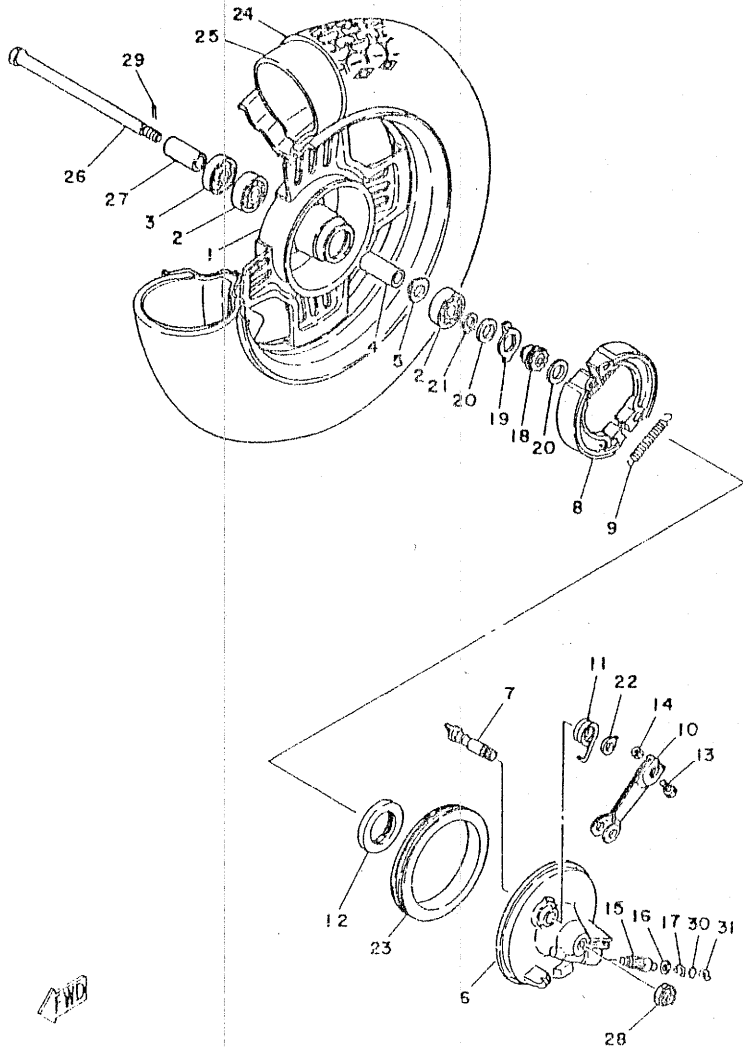
FIG. 21 SEAT CARRIER



REF. NO.	PART NO.	DESCRIPTION	Q'TY	REMARKS
1	5G3-W2472-01	DOUBLE SEAT ASSY	1	
2	5G3-24731-00	COVER, double seat	1	
3	1L9-24741-00	PAD, seat	3	
4	296-24723-00	DAMPER, seat	2	
5	5G3-24728-00	BRACKET, seat	1	
6	97301-06012	BOLT	2	
7	92901-06100	WASHER, sPring	2	
8	2T4-24726-00	HINGE, seat	1	
9	90109-06504	BOLT	1	
10	96701-06100	NUT, flange	3	
11	5G3-24705-02	SEAT LOCK ASSY	1	
12	92701-06030	SCREW, flat head	2	
13	5G3-21243-01	PLATE, bridge	1	
14	97301-08012	BOLT	2	
15	92901-08600	WASHER, Plate	2	
16	5G3-24834-00	BOLT	2	
17	5G3-24810-00	CARRIER ASSY	1	
18	95303-08800	NUT, crown	2	
19	95801-08012	BOLT, flange	2	
20	92901-08100	WASHER, sPring	2	
21	92903-08600	WASHER, Plate	4	
22	5G3-21308-01	HELMET HANGER ASSY	1	
23	92701-06015	SCREW, flat head	1	

C11

FIG. 22 FRONT WHEEL

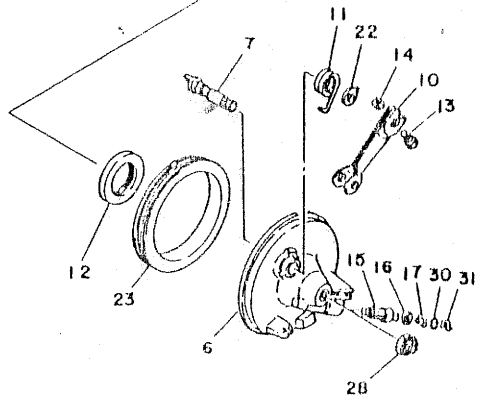
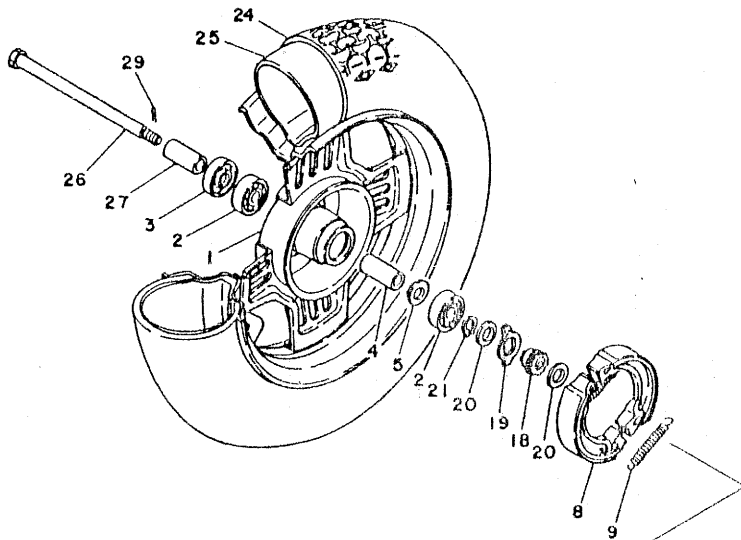


REF. NO.	PART NO.	DESCRIPTION	Q'TY	REMARKS
1	5G3-25180-00-35	FRONT WHEEL COMP.	1	silver
2	93306-30003	BEARING (B6300Z)	2	
3	93106-20001	OIL SEAL	1	
4	90560-10103	SPACER	1	
5	5G3-25115-00	FLANGE, sPacer 1	1	
6	5G3-25121-00-35	PLATE, brake shoe	1	silver
7	3Y6-25351-00	CAMSHAFT	1	
8	5G3-25130-01	BRAKE SHOE COMP.	2	
9	90506-15260	SPRING, tension	2	
10	5G3-25155-00	LEVER, camshaft 1	1	
11	90508-26393	SPRING, torsion	1	
12	93105-40020	OIL SEAL	1	
13	90101-06278	BOLT	1	
14	95301-06600	NUT	1	
15	5G3-25138-00	GEAR, meter	1	
16	90201-06656	WASHER, Plate	1	
17	2T4-25137-00	RING, stop	1	
18	5G3-25135-00	GEAR, drive	1	
19	5G3-25149-00	CLUTCH, meter	1	
20	90201-16242	WASHER, Plate	2	
21	93410-16007	CIRCLIP	1	
22	3E1-2513A-10	PLATE, indicator	1	
23	5G3-25336-00	RING 2	1	
24	94135-10681	TIRE (3.50-10)	1	UR
	94135-10682	TIRE (3.50-10)	1	UR
25	94235-10182	TUBE (3.50-10)	1	UR
	94230-10193	TUBE (3.00-10)	1	UR
26	5G3-25181-00	AXLE, wheel	1	

C12

FIG. 22 FRONT WHEEL

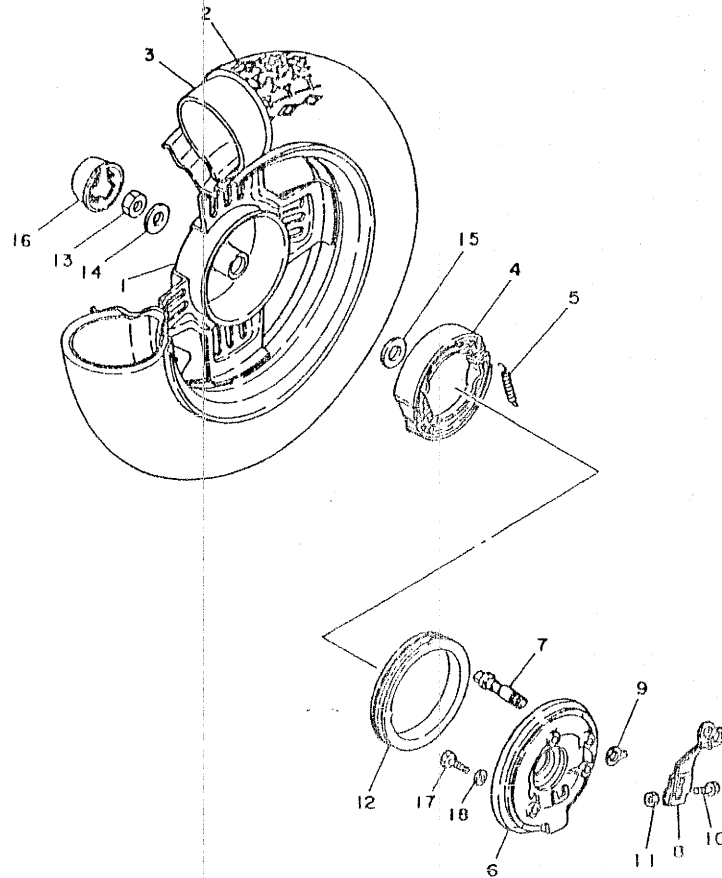
REF. NO.	PART NO.	DESCRIPTION	QTY	REMARKS
27	90387-10083	COLLAR	1	
28	90171-10004	NUT, castle	1	m10
29	91401-20020	PIN, cotter	1	
30	93210-10096	O-RING	1	
31	5G3-25137-00	RING, stop	1	



FWD

C13

FIG. 23 REAR WHEEL

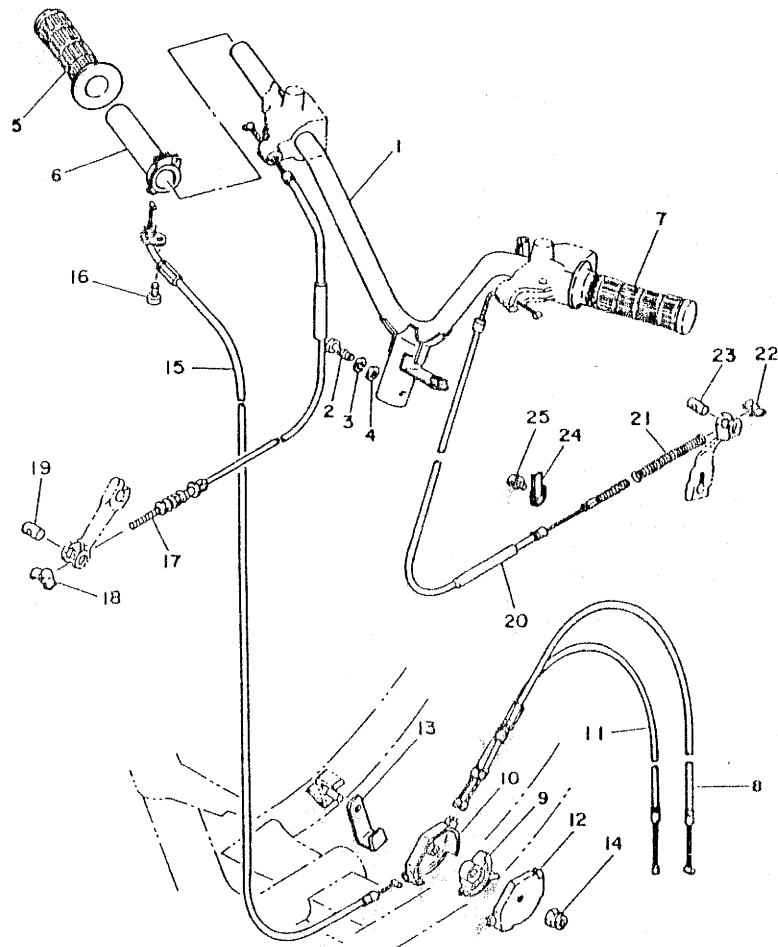


REF. NO.	PART NO.	DESCRIPTION	Q'TY	REMARKS
1	5G3-25390-00-35	REAR WHEEL COMP.	1	silver
2	94135-10601	TIRE (3.50-10)	1	UR
	94135-10602	TIRE (3.50-10)	1	UR
3	94235-10182	TUBE (3.50-10)	1	UR
	94230-10193	TUBE (3.00-10)	1	UR
4	5G3-25130-01	BRAKE SHOE COMP.	2	
5	90506-15260	SPRING, tension	2	
6	5G3-25321-00-35	PLATE, brake shoe	1	silver
7	5G3-25351-01	CAMSHAFT	1	
8	5G3-25355-01	LEVER, camshaft	1	
9	5G3-2533A-00	PLATE, indicator	1	
10	90101-06278	BOLT	1	
11	95301-06600	NUT	1	
12	5G3-25336-00	RING 2	1	
13	90185-14081	NUT, self-locking	1	
14	90201-14222	WASHER, Plate	1	
15	90201-17255	WASHER, Plate	1	
16	5G3-25335-00	CAP, wheel	1	
17	90101-08528	BOLT	3	
18	92901-09600	WASHER, Plate	3	

4714

C14

FIG. 24 HANDLEBAR CABLE



REF. NO.	PART NO.	DESCRIPTION	Q'TY	REMARKS
1	5G3-26110-03	HANDLE COMP.	1	
2	90101-08537	BOLT	1	
3	92901-08100	WASHER, sPrin&	1	
4	2E9-26129-00	WASHER	1	
5	5G3-26242-00	GRIP (R.H)	1	
6	5G3-26243-00	TUBE, throttle Guide	1	
7	5G3-26241-00	GRIP (L.H)	1	
8	5G3-26321-00	CABLE, PumP	1	
9	5G3-26263-02	PIECE, connectin&	1	
10	5G3-26261-01	CONNECTOR, cable	1	
11	5G3-26312-00	CABLE, throttle 2	1	
12	2T4-26262-01	CAP, cable connector	1	
13	5G3-26398-00	WASHER	1	
14	90185-05101	NUT, self-lockin&	1	
15	5G3-26311-00	CABLE, throttle 1	1	
16	98501-05012	SCREW, Pan head	1	
17	5G3-26341-00	CABLE, brake	1	
18	90175-06013	NUT, win&	1	
19	90249-12008	PIN	1	
20	5G3-26351-00	CABLE, brake	1	
21	90501-10652	SPRING, comPression	1	
22	90175-06013	NUT, win&	1	
23	90249-12008	PIN	1	
24	5G3-26393-01	HOLDER	1	
25	90105-06138	BOLT, washer based	1	

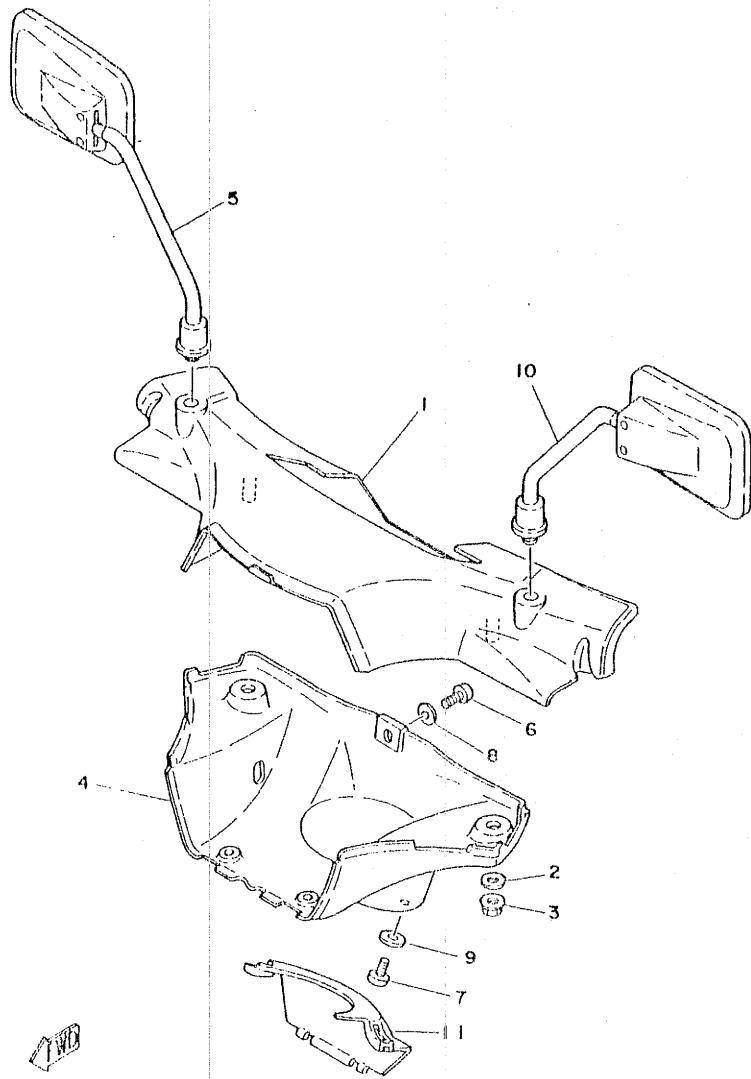
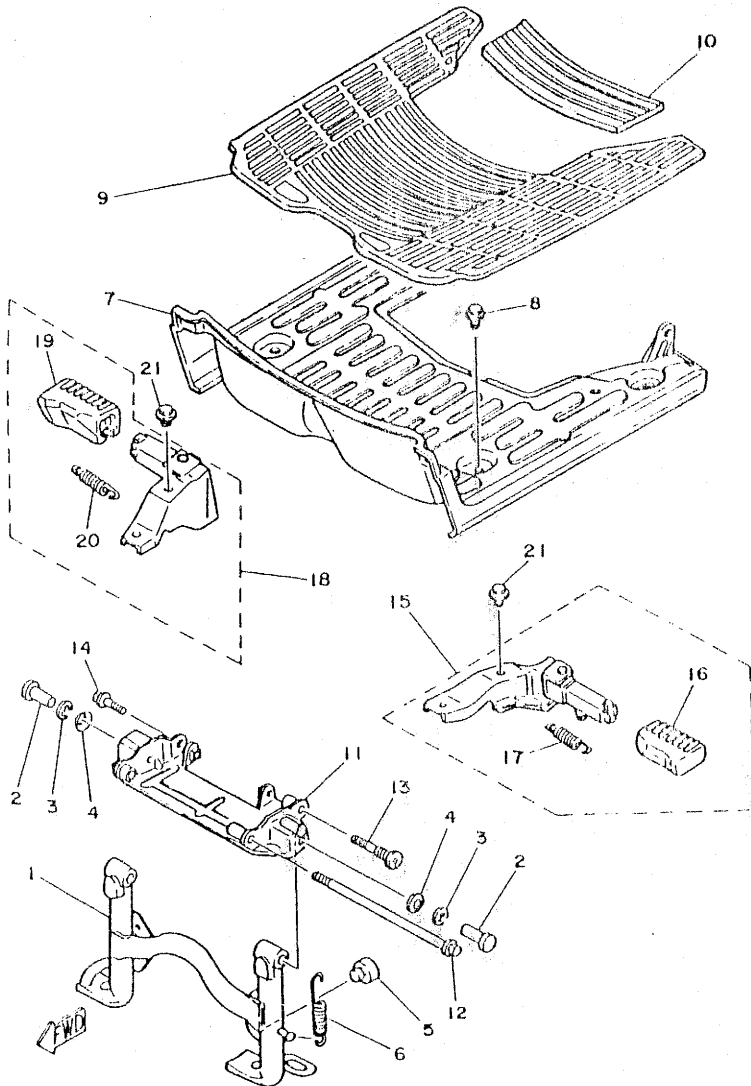


FIG. 25 COWLING

REF. NO.	PART NO.	DESCRIPTION	Q'TY	REMARKS
1	5G3-26213-01-1R	COVER, upper	1	UR rain blue
	5G3-26213-01-36	COVER, upper	1	UR clean white
	5G3-26213-01-66	COVER, upper	1	UR sunshine red
2	90201-08366	WASHER, Plate	2	
3	95712-08300	NUT, flange	2	
4	5G3-26215-01-1R	COVER, lower	1	UR rain blue
	5G3-26215-01-36	COVER, lower	1	UR clean white
	5G3-26215-01-66	COVER, lower	1	UR sunshine red
5	5G3-26290-60	BACK MIRROR ASSY	1	
6	9R903-05012	SCREW, blind	1	
7	97A01-06016	SCREW, Pan head	1	
8	92901-05200	WASHER, Plain	1	
9	90201-06050	WASHER, Plate	1	
10	5G3-26290-50	BACK MIRROR ASSY	1	
11	5G3-26216-01-1R	CAP, handlebar cover	1	UR rain blue
	5G3-26216-01-36	CAP, handlebar cover	1	UR clean white
	5G3-26216-01-66	CAP, handlebar cover	1	UR sunshine red

D2

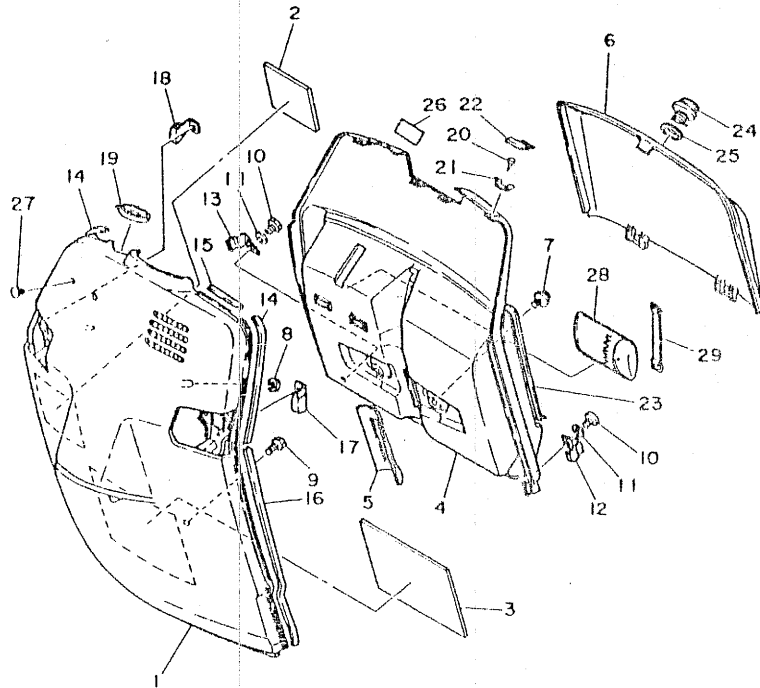
FIG. 26 STAND-FOOTREST



REF. NO.	PART NO.	DESCRIPTION	Q'TY	REMARKS
1	5G3-27111-04	STAND, main	1	
2	90249-12149	PIN	2	
3	93430-10015	CIRCLIP	2	
4	90208-12027	WASHER, conical spring	2	
5	5G3-27114-00	STOPPER, main stand	1	
6	90506-29273	SPRING, tension	1	
7	5G3-27481-01-T2	BOARD, footrest	1	low gloss grey
8	90119-06018	BOLT, with washer	4	
9	5G3-27483-01	MAT 1	1	
10	5G3-27484-00	MAT 2	1	
11	5G3-27151-00	BRACKET, main stand	1	
12	90105-08204	BOLT, washer based	1	
13	90105-08017	BOLT, washer based	1	
14	90105-08121	BOLT, washer based	1	
15	5G3-27430-00	REAR FOOTREST ASSY 1	1	
16	5G3-27433-01	.COVER, rear footrest	1	
17	90506-14257	.SPRING, tension	1	
18	5G3-27440-00	REAR FOOTREST ASSY 2	1	
19	5G3-27444-01	.COVER, rear footrest	1	
20	90506-14257	.SPRING, tension	1	
21	95801-08012	BOLT, flange	4	

D3

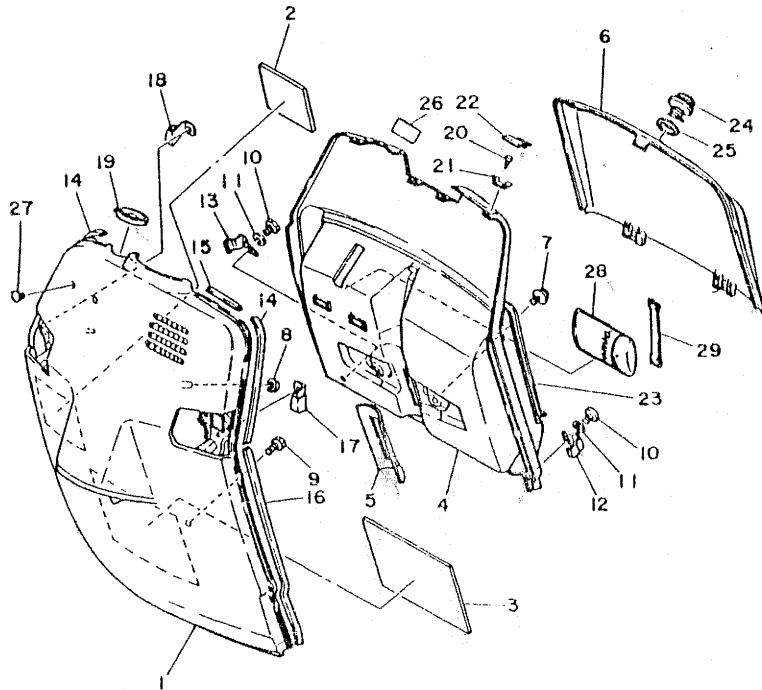
FIG. 27 LEG SHIELD



REF. NO.	PART NO.	DESCRIPTION	Q'TY	REMARKS
1	5G3-W2832-00-1R	PANEL, scooter	1	UR rain blue
	5G3-W2832-00-36	PANEL, scooter	1	UR clean white
	5G3-W2832-00-66	PANEL, scooter	1	UR sunshine red
2	5G6-28371-00	DAMPER	1	
3	5G6-28372-00	DAMPER	1	
4	5G3-W2833-00-1R	TRUNK, front 1	1	UR rain blue
	5G3-W2833-00-36	TRUNK, front 1	1	UR clean white
	5G3-W2833-00-66	TRUNK, front 1	1	UR sunshine red
5	5G3-28372-00	DAMPER	1	
6	5G3-28313-00-1R	TRUNK, front 2	1	UR rain blue
	5G3-28313-00-36	TRUNK, front 2	1	UR clean white
	5G3-28313-00-66	TRUNK, front 2	1	UR sunshine red
7	90119-06018	BOLT, with washer	2	
8	95701-06100	NUT, flange	2	
9	90119-06018	BOLT, with washer	2	
10	92506-06016	SCREW, Pan head	2	
11	92906-06100	WASHER, spring	2	
12	5G3-2744E-00	HOOK 1	1	
13	5G3-2744F-00	HOOK 2	1	
14	5G3-28345-01	MOLE 1	2	
15	5G3-28339-00	MOLD, leg shield	1	
16	5G3-28346-01	MOLE 2	2	
17	5G3-28321-00	STAY, leg shield (L.H)	1	
18	5G3-28322-00	STAY, leg shield (R.H)	1	
19	5G3-28347-01	MOLE 3	1	
20	97701-50114	SCREW, tapping	2	
21	5G3-28323-01	WASHER, leg shield	2	
22	5G3-28349-00	CAP	2	

FIG. 27 LEG SHIELD

REF. NO.	PART NO.	DESCRIPTION	Q'TY	REMARKS
23	5G3-28371-00	DAMPER	2	
24	5G3-21780-01	LOCK ASSY	1	
25	90480-24186	GROMMET	1	
26	4K5-2415E-20	LABEL, caution	1	
27	90338-04126	PLUG	2	
28	4N0-28100-10	TOOL KIT	1	
29	116-82131-00	BAND, battery	1	

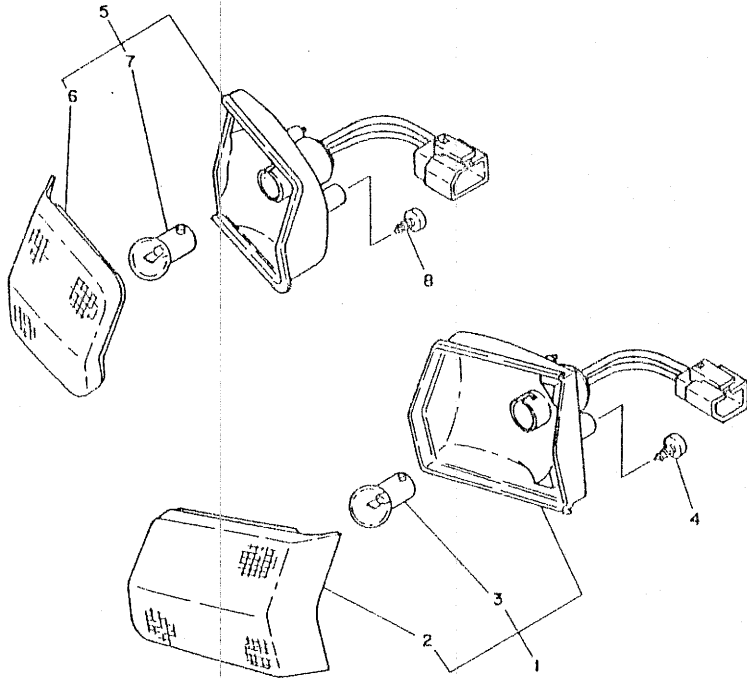


FWD

D5

FIG. 28 FLASHER LIGHT

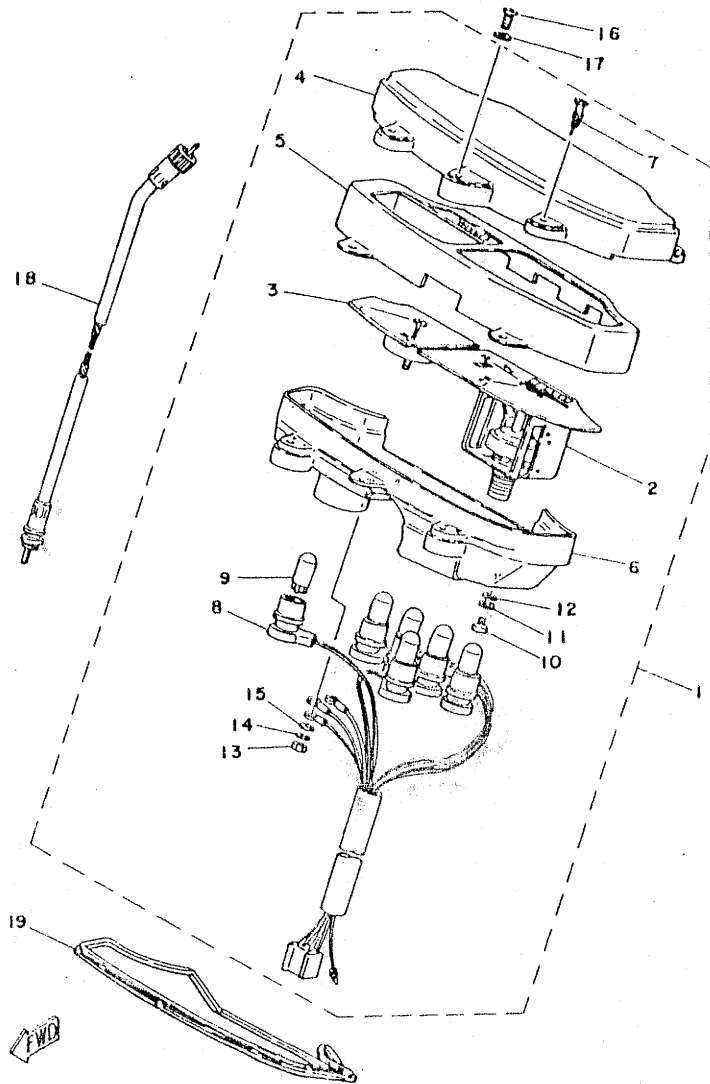
REF. NO.	PART NO.	DESCRIPTION	Q'TY	REMARKS
1	5G3-83310-00	FRONT FLASHER LIGHT ASSY 1	1	
2	5G3-83312-00	•LENS, flasher	1	
3	152-83311-10	•BULB (6V-10W)	1	
4	97701-50512	SCREW, tapping	2	
5	5G3-83320-00	FRONT FLASHER LIGHT ASSY	1	
6	5G3-83322-00	•LENS, flasher 2	1	
7	152-83311-10	•BULB (6V-10W)	1	
8	97701-50512	SCREW, tapping	2	



1/10

D6

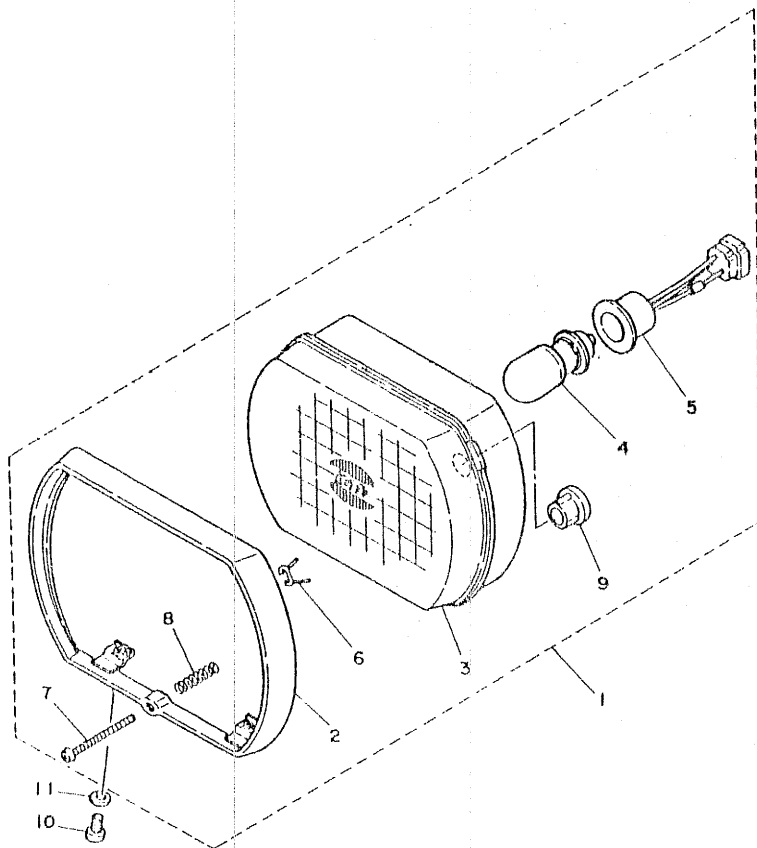
FIG. 29 METER



REF. NO.	PART NO.	DESCRIPTION	Q'TY	REMARKS
1	5G3-83510-F0	SPEEDOMETER ASSY	1	
2	5G3-8351A-F0	METER ASSY	1	
3	5G3-85750-00	FUEL METER ASSY	1	
4	5G3-83511-00	LENS, speedometer	1	
5	5G3-83568-F0	PILOT BOX, upper	1	
6	5G3-83572-00	CASE, speedometer lower	1	
7	95421-40314	SCREW, wood	4	
8	5G3-83586-00	SOCKET ASSY	1	
9	4N0-83516-00	BULB (6V 3W)	6	
10	98503-04010	SCREW, Pan head	2	
11	92901-04100	WASHER, spring	2	
12	92901-04600	WASHER, Plate	2	
13	95301-03700	NUT	3	
14	92901-03100	WASHER, spring	3	
15	92902-03600	WASHER	3	
16	98501-05016	SCREW, Pan head	3	
17	92901-05600	WASHER, Plate	3	
18	5G3-83550-00	SPEEDOMETER CABLE ASSY	1	
19	5G3-83513-01	DAMPER	1	

D7

FIG. 30 HEADLIGHT



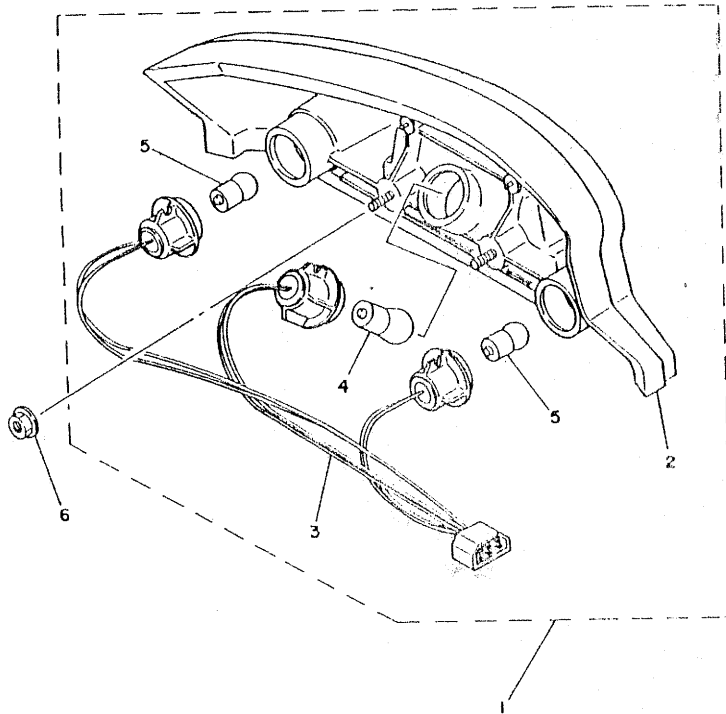
REF. NO.	PART NO.	DESCRIPTION	Q'TY	REMARKS
1	5G3-04110-00	HEADLIGHT UNIT ASSY	1	
2	5G3-04115-00	•RIM, headlight	1	
3	5G3-04120-00	•LENS ASSY	1	
4	206-04114-60	•BULB (6V-25/25W)	1	
5	4N7-04112-00	•SOCKET	1	
6	3E1-04124-10	•SPRING, set	2	
7	5G3-04131-00	•SCREW, rim adjuster	1	
8	341-04332-60	•SPRING, scrow	1	
9	3K7-04154-00	•GROMMET	1	
10	98501-05010	SCREW, Pan head	2	
11	92901-05600	WASHER, Plate	2	

1WD

D8

FIG. 31 TAILLIGHT

REF. NO.	PART NO.	DESCRIPTION	Q'TY	REMARKS
1	5G3-84510-00	TAILLIGHT UNIT ASSY	1	
2	5G3-84570-00	.TAIL LENS COMP.	1	
3	5G3-84530-00	.SOCKET ASSY	1	
4	122-84514-30	.BULB (6V-17/5.3W)	1	
5	152-83311-10	.BULB (6V-10W)	2	
6	95701-06100	NUT, flange	2	



FWD

D9

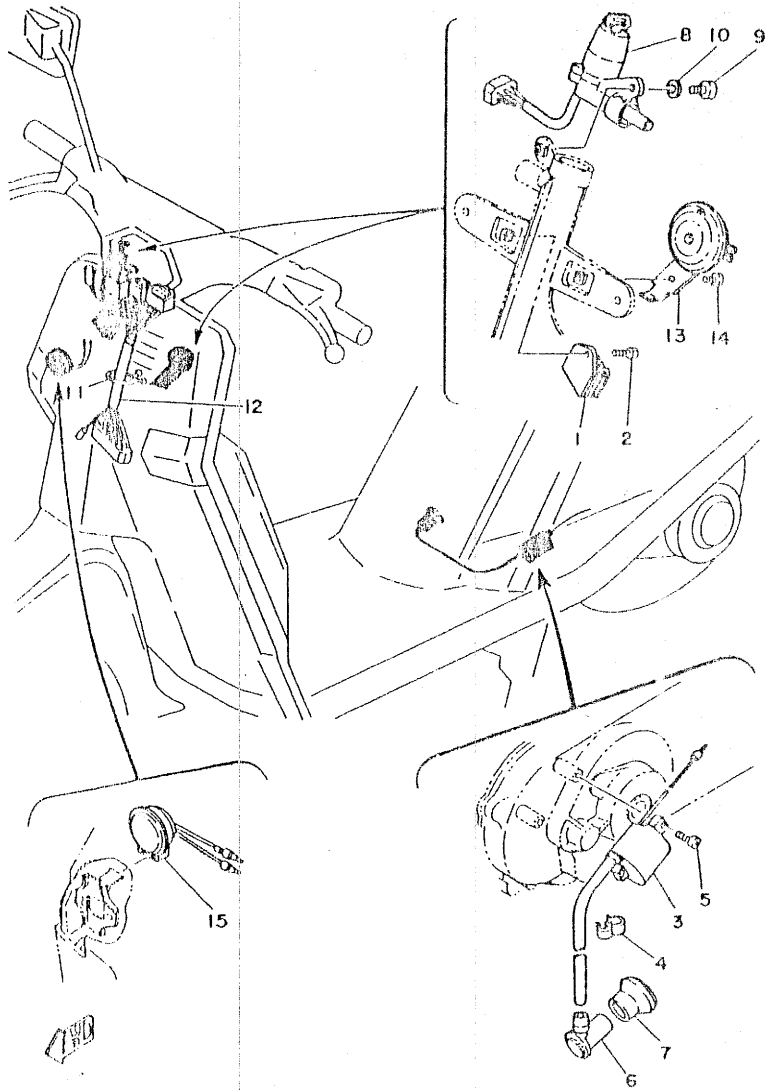


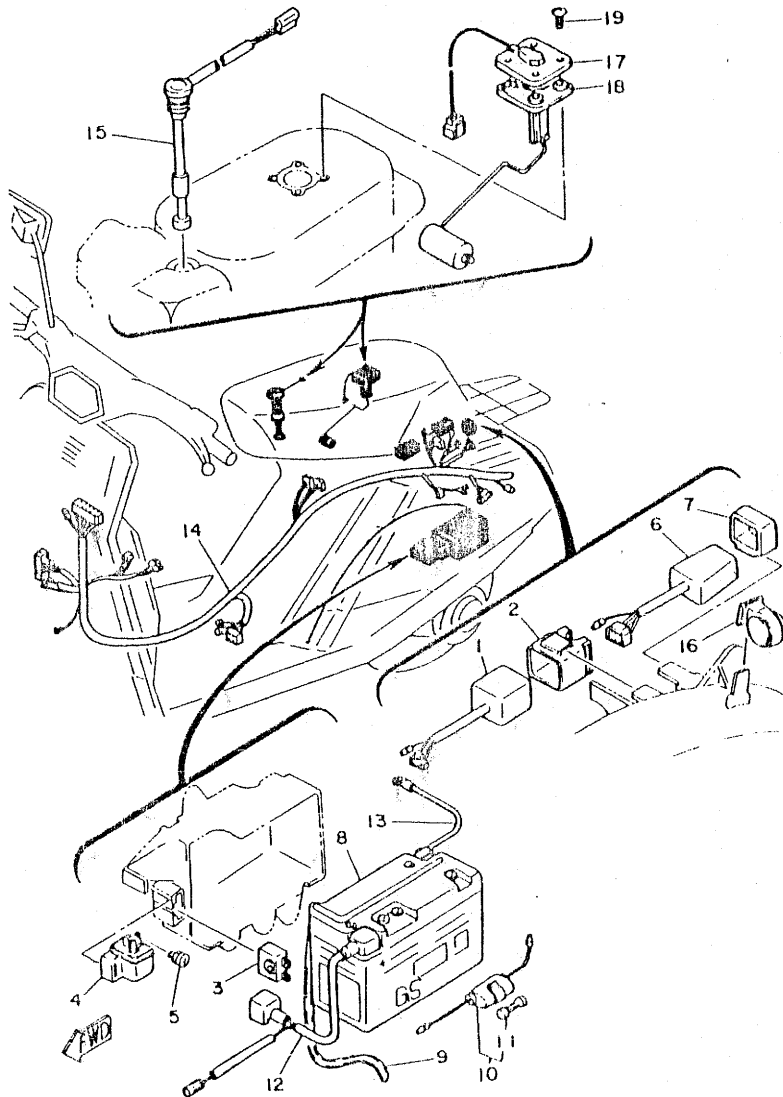
FIG. 32 ELECTRICAL 1

REF. NO.	PART NO.	DESCRIPTION	Q'TY	REMARKS
1	4F4-01910-60	VOLTAGE REGULATOR ASSY	1	
2	90153-08034	SCREW, hexagon	1	
3	4K3-02310-M0	IGNITION COIL ASSY	1	
4	90468-15020	CLIP	1	
5	92501-06018	SCREW, Pan head	2	
6	5G3-02370-00	PLUG CAP ASSY	1	
7	5G3-02372-00	SEAL, Plug cap	1	
8	5G3-02500-00	MAIN SWITCH ASSY	1	
9	92501-06015	SCREW, Pan head	1	
10	92901-06600	WASHER, Plate	1	
11	90464-23041	CLAMP	1	
12	5G3-02580-20	WIRE HARNESS ASSY 2	1	
13	5G3-03371-10	HORN	1	
14	92501-06012	SCREW, Pan head	1	
15	5G3-03390-20	AUDIO PILOT ASSY	1	

D10

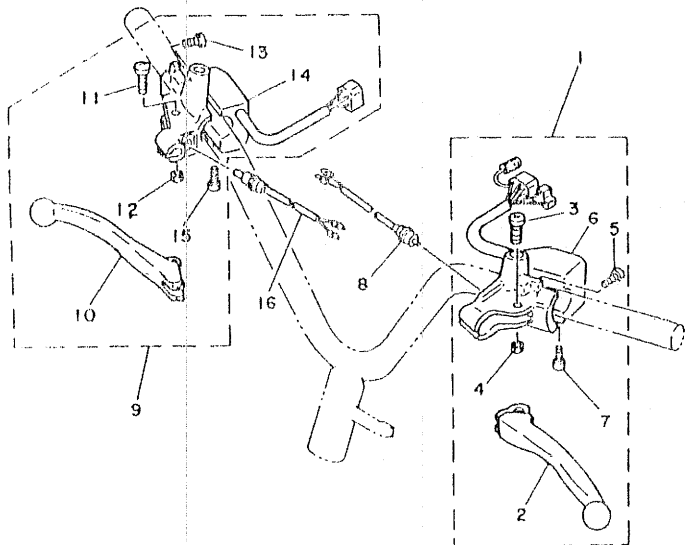
FIG. 33 ELECTRICAL 2

REF. NO.	PART NO.	DESCRIPTION	Q'TY	REMARKS
1	5G3-85540-M0	C.D.I. UNIT ASSY	1	
2	2A7-85546-00	BAND	1	
3	353-81970-63	RECTIFIER ASSY	1	
4	5G3-81940-00	STARTER SWITCH ASSY	1	
5	5J3-82113-00	SCREW	2	
6	5G3-85590-H0	CONTROL UNIT ASSY	1	
7	5G3-85546-00	BAND	1	
8	5G3-82110-10	BATTERY ASSY	1	
9	5G3-82112-00	PIPE, breather	1	
10	116-82150-00	FUSE HOLDER ASSY	1	
11	116-82151-00	.FUSE (6V-10A)	1	
12	5G3-82115-00	WIRE, Plus lead	1	
13	5G3-82116-00	WIRE, minus lead	1	
14	5G3-82590-20	WIRE HARNESS ASSY	1	
15	5G3-85720-01	OIL LEVEL GAUGE ASSY	1	
16	5G3-83350-10	FLASHER RELAY ASSY	1	
17	5G3-85752-00	SENDER UNIT ASSY, fuel meter	1	
18	5G3-85753-00	GASKET, sender unit	1	
19	90154-05004	SCREW, binding	4	



D11

FIG. 34 HANDLE SWITCH-LEVER



REF. NO.	PART NO.	DESCRIPTION	Q'TY	REMARKS
1	5G3-W0291-30	LEVER HOLDER ASSY (L.H)	1	
2	4U7-03912-00	•LEVER 1	1	
3	90149-05121	•SCREW	1	
4	95601-05100	•NUT, u	1	
5	98501-05012	•SCREW, Pan head	2	
6	5G3-03973-30	•SWITCH, handle 3	1	
7	98801-03010	•SCREW, bind	2	
8	2T4-03980-00	FRONT STOP SWITCH ASSY	1	
9	5G3-10292-30	LEVER HOLDER ASSY (R.H)	1	
10	4U7-03922-00	•LEVER 2	1	
11	90149-05121	•SCREW	1	
12	95601-05100	•NUT, u	1	
13	98501-05012	•SCREW, Pan head	2	
14	5G3-03975-30	•SWITCH, handle 2	1	
15	98801-03010	•SCREW, bind	2	
16	2E9-03980-00	FRONT STOP SWITCH ASSY	1	

W

D12

FIG. 35 REPAIR KIT

REF. NO.	PART NO.	DESCRIPTION	Q'TY	REMARKS
1	5G3-11630-00	PISTON ASSY (STD)	1	
2	5G3-11631-00-97	.PISTON (STD)	1	
3	5G3-11610-00	.PISTON RING SET (STD)	1	
4	527-11633-00	.PIN, Piston	1	
5	93450-13022	.CIRCLIP	2	
6	5G3-11630-10	PISTON ASSY (1ST O/S)	1	
7	5G3-11635-00	.PISTON (1ST O/S 0.25MM)	1	
8	5G3-11610-10	.PISTON RING SET (1ST O/S)	1	
9	527-11633-00	.PIN, Piston	1	
10	93450-13022	.CIRCLIP	2	
11	5G3-11630-20	PISTON ASSY (2ND O/S)	1	
12	5G3-11636-00	.PISTON (2ND O/S 0.50MM)	1	
13	5G3-11610-20	.PISTON RING SET (2ND O/S)	1	
14	527-11633-00	.PIN, Piston	1	
15	93450-13022	.CIRCLIP	2	
16	538-11650-00	CONNECTING ROD ASSY	1	
17	538-11651-01	.ROD, connecting	1	
18	257-11681-00	.PIN, crank	1	
19	93310-41809	.BEARING, cylindrical	1	
20	93310-11268	.BEARING, cylindrical	1	

D13

NUMERICAL INDEX

PART NO.	GRID NO.	PART NO.	GRID NO.	PART NO.	GRID NO.
5G3-W1411-00	B 0	530-11651-01	D13	5G3-15317-00	B10
5G3-W1412-00	B 0	257-11681-00	B 3	2T4-15363-00	B10
5G3-W1414-00	B 0		D13	498-15371-00	B10
5G3-W1415-00	B 0	5G3-12611-00	B 5	5G3-15411-00-35	B10
5G3-W2162-00	C 4	5G3-12651-00	B 5	5G3-15416-00	B11
5G3-W2172-00-1R	C 5	5G3-12652-00	B 5	5G3-15421-00	B10
5G3-W2172-00-36	C 5	5G3-12653-00	B 5	5G3-15461-00	B10
5G3-W2172-00-66	C 5	5G3-13101-00	B 6	5G3-15462-00	B11
5G3-W2173-00-1R	C 5	296-13124-00	B 6	5G3-15524-02	B12
5G3-W2173-00-36	C 5	384-13138-00	B 6	5G3-15544-01	B12
5G3-W2173-00-66	C 5	2E9-13174-00	B 6	5G3-16570-02	B12
5G3-W2472-01	C11	5G3-13178-01	B 6	5G3-15601-00	B12
5G3-W2832-00-1R	D 4	5G3-13555-01	B 7	122-15612-02	B12
5G3-W2832-00-36	D 4	5G3-13610-00	B 7	156-15618-01	B12
5G3-W2832-00-66	D 4	5G3-13613-00	B 7	5G3-15620-00	B12
5G3-W2033-00-1R	D 4	5G3-13616-00	B 7	5G3-15630-00	B12
5G3-W2833-00-36	D 4	100-13621-01	B 7	296-15644-00	B 6
5G3-W2833-00-66	D 4	5G3-14101-01	B 8	5G3-15657-00	B14
5G3-W0291-30	D12	5G3-14108-01	B 2	2E9-15673-00	B12
5G3-W0292-30	D12	5G3-14112-25	B 8	5G3-16111-00	B14
5G3-11111-00	B 2	4K8-14116-05	B 8	5G3-16611-00	B14
5G3-11111-00	B 2	3L6-14131-00	B 8	5G3-16620-00	B14
5G3-11161-00	B 2	3L6-14136-01	B 8	5G3-16626-00	B14
3M0-11181-00	B 2	127-14137-00	B 8	5G3-17410-00	B15
5G3-11311-00	B 2	3L7-14141-78	B 8	156-17417-00-03	B14
5G3-11351-00	B 2	3L5-14142-50	B 8	5G3-17420-00	B15
5G3-11400-00	B 3	1R0-14169-00	B 8	5G3-17471-00	B15
5G3-11412-00	B 3	5G3-14184-00	B 8	5G3-17601-00	B14
5G3-11422-00	B 3	5G3-14185-00	B 8	5G3-17611-00	B14
5G3-11610-00	D13	620-14186-00	B 8	5G3-17641-00	B14
	B 3	5G3-14190-20	B 8	5G3-17661-00	B14
5G3-11610-10	D13	183-14196-00	B 8	5G3-17670-00	B14
	B 3	5G3-14198-00	B 8	5G3-17684-00	B14
5G3-11610-20	D13	620-14231-22	B 8	5G3-21110-01-33	C 2
	D13	5G3-14309-00	B 2	5G3-21162-00	C 2
5G3-11630-00	D13	5G3-14388-01	B 2	5G3-2117F-00	C 3
5G3-11630-10	D13	5G3-14411-00	B 7	5G3-21171-02	C 2
5G3-11630-20	D13	5G3-14412-00	B 7	3L8-2118E-01	C 5
5G3-11631-00-97	B 3	5G3-14423-00	B 2	5G3-21243-01	C11
	D13	5G3-14451-00	B 7	5G3-21308-01	C11
527-11633-00	B 3	5G3-14453-00	B 7	5G3-2139R-00	C 3
	D13	5G3-14493-01	B 7	2T4-2139X-00	C 2
5G3-11635-00	B 3	5G3-14610-00	B 9	5G3-21395-02	C 2
	D13	132-14613-00	B 9	5G3-21410-02	C 2
5G3-11636-00	B 3	5G3-15111-00	B10	5G3-21471-00	C 2
	D13	5G3-15121-00	D10	5G3-21481-00	C 2
530-11650-00	D13	5G3-15128-00	B11	5G3-21511-01-1R	C 4
530-11651-01	B 3	5G3-15191-00	B11	5G3-21511-01-36	C 4

NUMERICAL INDEX

PART NO.	GRID NO.	PART NO.	GRID NO.	PART NO.	GRID NO.
5G3-21511-01-66	C 4	5G3-24317-00	B 2	5G3-26242-00	C15
5G3-21543-00	C 2	5G3-24500-00	C10	5G3-26243-00	C15
5G3-2171E-01	C 5	4K5-24521-00	C10	5G3-26261-01	C15
5G3-21711-00	C 5	2E9-24522-10	C10	2T4-26262-01	C15
5G3-21719-00	C 5	4K5-24561-00	C10	5G3-26263-02	C15
5G3-21726-02-12	C 5	296-24610-00	C10	5G3-26290-50	D 2
5G3-21729-00	C 5	5G3-24705-02	C11	5G3-26290-60	D 2
5G3-21741-01	C 5	296-24723-00	C11	5G3-26311-00	C15
5G3-21746-01	C 5	2T4-24726-00	C11	5G3-26312-00	C15
5G3-21747-00	C 3	5G3-24728-00	C11	5G3-26321-00	C15
5G3-21751-00	C 6	5G3-24731-00	C11	5G3-26341-00	C15
5G3-21755-00	C 5	1L9-24741-00	C11	5G3-26351-00	C15
4U5-2176E-00	C 5	5G3-24810-00	C11	5G3-26379-00	B11
3L5-21770-01	C 6	5G3-24834-00	C11	5G3-26393-01	C15
5G3-21776-00	C 6	5G3-25115-00	C12	5G3-26398-00	C15
5G3-21778-00	C 5	5G3-25121-00-35	C12	5G3-27111-04	D 3
5G3-21780-01	D 5	3E1-2513A-10	C12	5G3-27114-00	D 3
5G3-21781-00	C 5	5G3-25130-01	C12	5G3-27151-00	D 3
5G3-21790-00	C 5		C14	5G3-27430-00	D 3
5G3-22210-01	C 7	5G3-25135-00	C12	5G3-27433-01	D 3
5G3-22216-00	B10	2T4-25137-00	C12	5G3-2744E-00	D 4
5G3-22241-02	C 7	5G3-25137-00	C13	5G3-2744F-00	D 4
5G3-22242-00	C 7	5G3-25138-00	C12	5G3-27440-00	D 3
5G3-23310-00-33	C 8	5G3-25149-00	C12	5G3-27444-01	D 3
5G3-23317-00	C 9	5G3-25155-00	C12	5G3-27481-01-T2	D 3
5G3-23338-00	C 9	5G3-25180-00-35	C12	5G3-27483-01	D 3
5G3-23339-00	C 9	5G3-25181-00	C12	5G3-27484-00	D 3
5G3-23350-01	C 8	5G3-25321-00-35	C14	4N0-28100-10	D 5
5G3-23361-00	C 8	5G3-2533A-00	C14	5G3-28313-00-1R	D 4
296-23362-09	C 8	5G3-25335-00	C14	5G3-28313-00-36	D 4
296-23363-01	C 8	5G3-25336-00	C12	5G3-28313-00-66	D 4
296-23364-01	C 8		C14	5G3-28321-00	D 4
5G3-23371-00	C 8	3Y6-25351-00	C12	5G3-28322-00	D 4
296-23372-09	C 8	5G3-25351-01	C14	5G3-28323-01	D 4
296-23381-01	C 8	5G3-25355-01	C14	5G3-28339-00	D 4
296-23382-01	C 8	5G3-25390-00-35	C14	5G3-28345-01	D 4
116-23383-00	C 8	5G3-26110-03	C15	5G3-28348-01	D 4
116-23384-00	C 8	2E9-26129-00	C15	5G3-28347-01	D 4
122-23411-00	C 9	5G3-26213-01-1R	D 2	5G3-28349-00	D 4
156-23411-00	C 8	5G3-26213-01-36	D 2	5G3-28371-00	D 5
122-23412-00	C 9	5G3-26213-01-66	D 2	5G6-28371-00	D 4
156-23412-00	C 9	5G3-26215-01-1R	D 2	5G3-28372-00	D 4
122-23416-00	C 9	5G3-26215-01-36	D 2	5G6-28372-00	D 4
5G3-24110-00	C10	5G3-26215-01-66	D 2	5G3-8131X-M0	B 4
4K5-2415E-20	D 5	5G3-26216-01-1R	D 2	5G3-81313-M0	B 4
2E9-24182-00	C 5	5G3-26216-01-36	D 2	5G6-81328-M0	B 4
5G3-24180-01	C10	5G3-26216-01-66	D 2	5G3-81800-60	B13
5G3-24311-00	C10	5G3-26241-00	C15	5G3-81801-00	B13



NUMERICAL INDEX

PART NO.	GRID NO.	PART NO.	GRID NO.	PART NO.	GRID NO.
5G3-81809-00	B13	5G3-83975-30	D12	90149-05121	D12
5G3-81815-00	B13	2F9-83980-00	D12	90149-06007	C 5
5G3-81820-00	B13	2T4-83980-00	D12	90153-06034	D10
5G3-81828-00	B13	5G3-84110-00	D 8	90154-05004	D11
5G3-81830-00	B13	4N7-84112-00	D 8	90155-08002	C 8
5G3-81842-01	B13	206-84114-60	D 8	90170-07019	B 2
5G3-81845-00	B13	5G3-84115-00	D 8	90170-10105	B 6
5G3-81847-00	B13	5G3-84120-00	D 8	90170-10219	B14
5G3-81859-00	B13	3E1-84124-10	D 8	90170-36279	B14
4F4-81910-60	D10	5G3-84131-00	D 8	90171-10004	C13
5G3-81940-00	D11	3K7-84154-00	D 8	90175-06013	C15
353-81970-63	D11	341-84332-60	D 8	90179-25033	C 9
5G3-82110-10	D11	5G3-84510-00	D 9	90185-05101	C15
5G3-82112-00	D11	122-84514-30	D 9	90185-06098	C 2
5J3-82113-00	D11	5G3-84530-00	D 9	90185-12093	C 2
5G3-82115-00	D11	5G3-84570-00	D 9	90185-14081	C14
5G3-82116-00	D11	5G3-85500-M0	B 4	90201-05764	C 2
116-82131-00	D 5	5G3-85520-M0	B 4	90201-06050	C 2
116-82150-00	D11	5G3-85540-M0	D11		C 4
116-82151-00	D11	2A7-85546-00	D11		C 5
4K3-82310-M0	D10	5G3-85546-00	D11		D 2
5G3-82370-00	D10	5G3-85550-M0	B 4	90201-061E8	C 2
5G3-82372-00	D10	5G3-85561-M0	B 4	90201-06336	B 7
5G3-82508-00	D10	3L5-85564-M0	B 4	90201-06557	B 7
5G3-82580-20	D10	2T4-85568-M1	B 4	90201-06668	C12
5G3-82590-20	D11	2T4-85569-M1	B 4	90201-07850	B 2
5G3-83310-F0	D 6	5G3-85580-M0	B 4	90201-08366	D 2
152-83311-10	D 6	5G3-85590-M0	D11	90201-105E8	B15
	D 9	5G3-85720-01	D11	90201-12704	B15
5G3-83312-00	D 6	5G3-85750-00	D 7	90201-14222	C14
5G3-83320-00	D 6	5G3-85752-00	D11	90201-14224	B14
5G3-83322-00	D 6	5G3-85753-00	D11	90201-154E9	B12
5G3-83350-10	D11	90101-06278	C12	90201-16242	C12
5G3-83371-10	D10		C14	90201-17255	C14
5G3-83390-20	D10	90101-08528	C14	90206-19027	B 6
5G3-8351A-F0	D 7	90101-08537	C15	90208-10012	B14
5G3-83510-F0	D 7	90105-06138	C15	90208-12027	B15
5G3-83511-00	D 7	90105-08017	D 3		D 3
5G3-83513-01	D 7	90105-08121	D 3	90209-10108	B12
4N0-83516-00	D 7	90105-08204	D 3	90215-36190	B14
5G3-83550-00	D 7	90105-12193	C 2	90249-12008	C15
5G3-83568-F0	D 7	90109-06504	C11	90249-12149	D 3
5G3-83572-00	D 7	90109-08607	C 9	90280-03017	B 3
5G3-83586-00	D 7	90109-08629	B 9	90338-04126	D 5
4U7-83912-00	D12	90116-07356	B 2	90380-15083	B12
4U7-83922-00	D12	90119-06018	D 3	90384-10140	B15
437-83936-10	C 2		D 4	90387-06681	C 4
5G3-83973-30	D12	90149-04135	B 6	90387-10083	C13

NUMERICAL INDEX

PART NO.	GRID NO.	PART NO.	GRID NO.	PART NO.	GRID NO.
92501-06012	C10	92901-08600	C14	90387-136E5	B15
	D10	92901-10100	C 8	90387-165E7	B14
92501-06015	B 2	92901-12100	B 3	90387-203E3	B 3
	B 5	92901-12600	B 3	90401-10029	B 6
	B 7	92902-03600	D 7	90401-10035	C 8
	B11	92902-05100	C 2	90430-04004	B 6
	D10	92903-08600	C11	90430-08119	B10
92501-06018	D10	92906-06100	C 2	90445-05352	B 6
92501-06020	B13		D 4	90445-07592	B 2
92501-06025	B 5	93101-10001	B 6	90445-08593	C10
	B 7	93101-25103	B14	90445-09068	C10
	B10	93102-19244	B 4	90445-09090	C 6
92501-06030	B10	93102-20009	B 3	90445-11560	B 2
92501-06035	B10	93102-22240	B15	90445-11561	B 2
92501-06040	B10	93102-26042	B 3	90446-07008	B10
92501-06045	B10	93102-32241	B15	90460-32189	B 7
92506-06016	C 2	93105-40020	C12	90461-05036	B 4
	D 4	93106-20001	C12	90464-23041	D10
92701-06012	B 4	93107-35011	B14	90464-35047	B 2
92701-06015	B12	93109-41028	B14	90467-08003	C 6
	C11	93210-10096	C13		C10
92701-06030	C11	93210-14104	B10	90467-20023	B 7
92901-03100	B 7	93210-26240	B 6	90468-02033	B 6
	D 7	93306-00306	B10	90468-15020	D10
92901-04100	B 4	93306-00510	B16	90480-01288	C 6
	B 8	93306-20310	B15	90480-01300	B11
	D 7	93306-20418	B 3	90480-22084	C 5
92901-04600	D 7	93308-30003	C12	90480-24186	D 5
92901-05200	D 2	93310-11268	B 3	90501-06628	B 7
92901-05600	D 7		D13	90501-08410	C10
	D 8	93310-214J4	B14	90501-10652	C15
92901-06100	B 5	93310-232J8	B12	90501-12664	B14
	C 2	93310-414J6	B14	90501-29517	C 2
	C 4	93310-41809	B 3	90501-40627	B14
	C10		D13	90504-18005	B12
	C11	93342-21410	B14	90506-14257	D 3
92901-06200	C 9	93410-15005	B12	90506-15260	C12
92901-06600	B 2	93410-16007	C12		C14
	B 5	93410-17008	B10	90506-29273	D 3
	B10	93410-19015	B 6	90508-26393	C12
	C 2	93430-07012	B 6	90508-32356	B12
	D10	93430-10015	D 3	90560-10103	C12
92901-08100	B 9	93440-10028	B12	91401-20020	C13
	C 9	93440-25019	B14	91830-21014	B10
	C11	93450-13022	B 3	91830-22016	B10
	C15		D13	92501-06010	B15
92901-08600	B 9	93450-18077	B14	92501-06012	B11
	C11	93501-04011	C 9		C 5

NUMERICAL INDEX

PART NO.	GRID NO.	PART NO.	GRID NO.	PART NO.	GRID NO.
93503-16010	C 9	98501-04008	B 4		
93603-12007	B 6	98501-04012	B 4		
93603-14026	B 6		B 8		
93700-04002	C 8	98501-04014	B 8		
93700-06004	C 8	98501-05008	B 13		
94135-10681	C 12	98501-05010	D 8		
	C 14	98501-05012	C 15		
94135-10682	C 12		D 12		
	C 14	98501-05016	C 2		
94230-10193	C 2		D 7		
	C 4	98501-05020	B 6		
94235-10182	C 2	98501-05035	B 6		
	C 4	98503-04010	B 4		
94701-00198	B 2		D 7		
95301-03700	D 7	98511-04025	B 4		
95301-06600	C 2	98901-03010	D 12		
	C 4	98903-05012	D 2		
95301-00700	C 9	98903-06012	C 9		
95301-10700	C 8				
95301-12600	B 3				
95303-08800	C 11				
95421-40314	D 7				
95601-05100	D 12				
95811-10100	C 2				
95701-06100	C 2				
	C 5				
	C 11				
	D 4				
	D 9				
95712-08300	D 2				
95801-06012	C 6				
	C 10				
95801-08012	C 11				
	D 3				
95801-08016	B 10				
97301-06012	C 11				
97301-06016	B 2				
	B 5				
	C 2				
	C 4				
97301-06045	B 7				
97301-08012	C 11				
97301-08020	B 9				
97311-06025	B 12				
97701-50114	D 4				
97701-50512	D 6				
97801-06016	D 2				
98501-03008	B 7				

PARTS NAME INDEX

DESCRIPTION	GRID NO.
ABSORBER 1	B 2
ADJUSTER SET	B 8
AIR SCREW SET	B 8
*	B 8
AIR SHROUD, cylinder 1	B 5
AIR SHROUD, cylinder 2	B 5
AIR SHROUD, cylinder 3	B 5
ARM 1	C 8
ARM 2	C 8
AUDIO PILOT ASSY	D10
AXLE, wheel	C12
BACK MIRROR ASSY	D 2
*	D 2
BALL	C 9
*	C 9
BAND	D11
*	D11
BAND, battery	D 5
BAND, switch cord	C 2
BAND, tank fitting	C 6
BASE, magneto	B 4
BATTERY ASSY	D11
BEARING	B10
*	B10
*	B14
*	B15
BEARING (B6203RS)	B15
BEARING (B6204CS)	B 3
BEARING (B6300Z)	C12
BEARING, cylindrical	B 3
*	B 3
*	B12
*	B14
*	B14
*	D13
*	D13
BIMETAL CONTROL VALVE ASSY	B 2
BOARD, footrest	D 3
BOLT	B 2
*	B 5
*	B 5
*	B 7
*	B 9
*	B 9
*	B12
*	C 2
*	C 2
*	C 4

PARTS NAME INDEX

DESCRIPTION	GRID NO.
BOLT	C 4
*	C 9
*	C11
*	C11
*	C11
*	C11
*	C12
*	C14
*	C14
*	C15
BOLT 1	C 7
BOLT 2	B13
*	C 7
BOLT, engine mounting 1	C 2
BOLT, flange	B10
*	C 6
*	C10
*	D 3
*	B 2
BOLT, stud	B 6
BOLT, union	C 8
*	C 2
BOLT, washer based	C15
*	D 3
*	D 3
*	D 3
BOLT, with washer	D 3
*	D 4
*	D 4
BOX, tool	C 2
BRACKET, battery box 3	C 2
BRACKET, main stand	D 3
BRACKET, seat	C11
BRAKE SHOE COMP.	C12
*	C14
BREATHER	B10
BRUSH SET	B13
BULB (6V 3W)	D 7
BULB (6V-10W)	D 6
*	D 6
*	D 9
BULB (6V-17/5-3W)	D 9
BULB (6V-25/26W)	D 8
BUSH 1	C 8
*	C 8
BUSH 2	C 8
*	C 3

PARTS NAME INDEX

DESCRIPTION	GRID NO.
BUSH, bimetal formed	B15
BUSH, rear shock absorber	B10
BUSH, solid	B12
C.D.I. MAGNETO ASSY	B 4
C.D.I. UNIT ASSY	D11
CABLE, brake	C15
*	C15
CABLE, pump	C15
CABLE, throttle 1	C15
CABLE, throttle 2	C15
CAMSHAFT	C12
*	C14
CAP	B 8
*	D 4
CAP ASSY	C10
CAP, cable connector	C15
CAP, cleaner case 1	B 7
CAP, handlebar cover	D 2
*	D 2
*	D 2
CAP, wheel	C14
CARBURETOR ASSY 1	B 8
CARRIER ASSY	C11
CASE, air cleaner 1	B 7
CASE, speedometer lower	D 7
CIRCLIP	B 3
*	B 6
*	B 6
*	B10
*	B12
*	B12
*	B14
*	B14
*	C12
*	D 3
*	D13
*	D13
*	D13
CLAMP	B 2
*	B 4
*	B 4
*	D10
CLAMP, damper	C 5
*	C 5
CLAMP, hose	B 7
CLIP	B 6
*	B 7
*	B 8

PARTS NAME INDEX

DESCRIPTION	GRID NO.
CLIP	B12
*	C 6
*	C10
*	C10
*	D10
CLUTCH CARRIER ASSY	B14
CLUTCH HOUSING COMP.	B14
CLUTCH, meter	C12
CLUTCH, one	B14
COIL, charge	B 4
COIL, lighting 1	B 4
COIL, Pulser	B 4
COLLAR	B 3
*	B14
*	B15
*	C 4
*	C13
COLLAR 1	C 8
*	C 8
COLLAR 2	C 8
*	C 8
CONNECTING ROD ASSY	D13
CONNECTOR, cable	C15
CONTROL UNIT ASSY	D11
CORD ASSY	B 4
COVER	B13
*	C 3
COVER 2	C 3
COVER, ball race 2	C 9
COVER, crankcase 1	B10
COVER, crankcase 2	B10
COVER, cylinder head side 4	B 2
COVER, double seal	C11
COVER, dust seal 1	C 8
*	C 8
COVER, dust seal 2	C 8
*	C 8
COVER, front suspension 1	C 9
COVER, front suspension 2	C 9
COVER, kick lever	B12
COVER, lower	D 2
*	D 2
*	D 2
COVER, oil pump	B11
COVER, rear footrest	D 3
*	D 3
COVER, side 1	C 5
COVER, side 4	C 5

PARTS NAME INDEX

DESCRIPTION	GRID NO.
COVER, side 5	C 5
COVER, upper	D 2
*	D 2
*	D 2
CRANK 1	B 3
CRANK 2	B 3
CRANKCASE 1	B10
CRANKCASE 2	B10
CRANKSHAFT ASSY	B 3
CUP, filter	C10
CYLINDER 1	B 2
DAMPER	C 2
*	C 3
*	C 5
*	D 4
*	D 4
*	D 4
*	D 4
*	D 5
*	D 7
DAMPER, locating 1	C 5
DAMPER, locating 2	C 5
DAMPER, seal	C11
DOUBLE SEAT ASSY	C11
DRIVE AXLE ASSY (47T)	B15
ELEMENT, air cleaner	B 7
EMBLEM SET	C 5
EMBLEM 1	C 5
*	C 5
ENGINE BRACKET COMP.	C 2
EXHAUST PIPE ASSY 1	B 9
FAN	B 5
FENDER, front	C 4
*	C 4
*	C 4
FLANGE, spacer 1	C12
FLASHER RELAY ASSY	D11
FLOAT	B 8
FORK COVER COMP.	C 8
FORN BRACKET ASSY	B13
FRAME COMP	C 2
FRONT FLASHER LIGHT ASSY	D 6
FRONT FLASHER LIGHT ASSY 1	D 6
FRONT STOP SWITCH ASSY	D12
*	D12
FRONT WHEEL COMP.	C12
FUEL COCK ASSY 1	C10
FUEL METER ASSY	D 7
FUEL TANK COMP.	C10

PARTS NAME INDEX

DESCRIPTION	GRID NO.
FUSE (6V-10A)	D11
FUSE HOLDER ASSY	D11
GASKET	B 6
*	B 8
*	B10
*	C10
GASKET, crankcase cover 2	B10
GASKET, crankcase cover 3	B11
GASKET, cylinder	B 2
GASKET, cylinder head 1	B 2
GASKET, exhaust pipe	B 9
GASKET, float chamber	B 8
GASKET, sender unit	D11
GASKET, valve seat	B 7
GEAR, drive	C12
GEAR, meter	C12
GEAR, Primary drive (18T)	B14
GEAR, Pump drive	B 6
GEAR, worm wheel (56T)	B 6
GRIP (L.H)	C15
GRIP (R.H)	C15
GROMMET	B 4
*	B11
*	C 5
*	C 5
*	C 6
*	D 5
*	D 8
GUIDE, cable	B11
HANDLE COMP.	C15
HEAD, cylinder 1	B 2
HEADLIGHT UNIT ASSY	D 8
HELMET HANGER ASSY	C11
HINGE, seat	C11
HOLDER	B11
*	C15
HOLDER, cable	C 9
HOLDER, clutch cable	C 2
HOLDER, oil pipe	B 6
HOOK 1	D 4
HOOK 2	D 4
HORN	D10
HOSE	B 2
*	B 2
*	B 2
*	B 2
*	B 6
*	B10

PARTS NAME INDEX

DESCRIPTION	GRID NO.
HOSE	C 6
*	C10
IGNITION COIL ASSY	D10
JET COMP.	B 2
JET, main (#110.0)	B 8
JET, Pilot (#50.0)	B 8
JOINT, air cleaner 1	B 7
KEY, woodruff	B 3
KICK CRANK ASSY	B12
KICK PINION ASSY (9T)	B12
KICK SHAFT ASSY (66T)	B12
LABEL, caution	D 5
LENS ASSY	D 8
LENS, flasher	D 6
LENS, flasher 2	D 6
LENS, speedometer	D 7
LEVER HOLDER ASSY (L.H)	D12
LEVER HOLDER ASSY (R.H)	D12
LEVER 1	D12
LEVER 2	D12
LEVER, camshaft	C14
LEVER, camshaft 1	C12
LEVER, kick	B12
LOCK ASSY	D 5
MAIN AXLE ASSY (14T-52T)	B15
MAIN SWITCH ASSY	D10
MANIFOLD, intake	B 7
MAT 1	D 3
MAT 2	D 3
METER ASSY	D 7
MOLD, leg shield	D 4
MOLE 1	D 4
MOLE 2	D 4
MOLE 3	D 4
MUD GUARD COMP.	C 4
NEEDLE	B 8
NEEDLE VALVE ASSY	B 8
NET, filter	C10
NIPPLE, Grease	C 8
*	C 8
*	C 8
NOZZLE, main	B 8
NUT	B 2
*	B 3
*	B 6
*	B14
*	B14
*	C 8

PARTS NAME INDEX

DESCRIPTION	GRID NO.
NUT	C 9
*	C 9
*	C 9
*	C12
*	C14
*	D 7
NUT, castle	C13
NUT, crown	C11
NUT, flange	C 2
*	C 5
*	C11
*	D 2
*	D 4
*	D 9
NUT, self-locking	C 2
*	C 2
*	C14
*	C15
NUT, u	C 2
*	D12
*	D12
NUT, wing	C15
*	C15
O-RING	B 6
*	B10
*	B13
*	C13
OIL LEVEL GAUGE ASSY	D11
OIL PUMP ASSY	B 6
OIL SEAL	B 3
*	B 3
*	B 4
*	B 6
*	B14
*	B14
*	B14
*	B15
*	B15
*	C12
*	C12
OIL TANK CAP ASSY	C 6
PAD, seat	C11
PANEL 2	C 5
PANEL, scooter	D 4
*	D 4
*	D 4
PIECE, connecting	C15
PILOT BOX, upper	D 7

PARTS NAME INDEX

DESCRIPTION	GRID NO.
PIN	C15
*	C15
*	D 3
PIN, cotter	C13
PIN, crank 1	B 3
*	D13
PIN, dowel	B 6
*	B 6
*	B10
*	B10
PIN, float	B 8
PIN, Piston	B 3
*	D13
*	D13
PIPE	B 8
PIPE 7	B 2
PIPE, breather	D11
PIPE, fuel 1	C10
PIPE, suction 1	B 2
PISTON (STD)	B 3
*	D13
PISTON (1ST O/S 0.25MM)	B 3
*	D13
PISTON (2ND O/S 0.50MM)	B 3
*	D13
PISTON ASSY (STD)	D13
PISTON ASSY (1ST O/S)	D13
PISTON ASSY (2ND O/S)	D13
PISTON RING SET (STD)	B 3
*	D13
PISTON RING SET (1ST O/S)	B 3
*	D13
PISTON RING SET (2ND O/S)	B 3
*	D13
PLATE	B11
*	B13
*	C 5
*	C 6
PLATE 1	C 2
PLATE, adjusting	B 6
PLATE, brake shoe	C12
*	C14
PLATE, bridge	C11
PLATE, cover	B15
PLATE, indicator	C12
*	C14

PARTS NAME INDEX

DESCRIPTION	GRID NO.
PLUG	D 5
PLUG CAP ASSY	D10
PLUG, oil	B10
PLUG, spark (NGK BPR6HS)	B 2
PRIMARY SHEAVE ASSY	B14
PROTECTOR, engine	C 2
RACE, ball 1	C 8
*	C 9
RACE, ball 2	C 9
*	C 9
REAR BRACKET ASSY	B13
REAR FOOTREST ASSY 1	D 3
REAR FOOTREST ASSY 2	D 3
REAR WHEEL COMP.	C14
RECTIFIER ASSY	D11
REED VALVE ASSY	B 7
REED, valve	B 7
RIM, headlight	D 8
RING 2	C12
*	C14
RING, stop	C12
*	C13
ROD, connecting	B 3
*	D13
ROTOR ASSY	B 4
SCREW	B 6
*	C 5
*	C 5
*	D11
*	D12
*	D12
SCREW, blind	C 9
*	D 2
*	D12
*	D12
SCREW, binding	D11
SCREW, flat fillister	C 8
SCREW, flat head	B 4
*	B12
*	C11
SCREW, hexagon	D10

PARTS NAME INDEX

DESCRIPTION	GRID NO.
SCREW, Pan head	B 2
*	B 4
*	B 4
*	B 4
*	B 4
*	B 4
*	B 6
*	B 6
*	B 6
*	B 6
*	B 7
*	B 7
*	B 8
*	B 8
*	B10
*	B10
*	B10
*	B10
*	B10
*	B10
*	B11
*	B11
*	B13
*	B13
*	B15
*	C 2
*	C 2
*	C 5
*	C10
*	C15
*	D 2
*	D 4
*	D 7
*	D 7
*	D 8
*	D10
*	D10
*	D10
*	D12
*	D12
SCREW, rim adjuster	D 8
SCREW, tapping	D 4
*	D 6
*	D 6
SCREW, wood	D 7

PARTS NAME INDEX

DESCRIPTION	GRID NO.
SEAL, dust 1	C 8
*	C 8
SEAL, dust 2	C 8
*	C 8
SEAL, plug cap	D10
SEAT LOCK ASSY	C11
SEAT, rubber	C10
SEAT, secondary spring	B14
SEAT, spring	B 8
SECONDARY SLIDING SHEAVE	B14
SENDER UNIT ASSY, fuel meter	D11
SHEAVE, Primary fixed	B14
SHEAVE, secondary fixed	B14
SHIM	B 6
SHIM 1 (0.3T)	B14
SHOCK ABSORBER ASSY	C 8
SHOCK ABSORBER ASSY, rear	C 7
SIDE COVER 2	C 5
*	C 5
SIDE COVER 3	C 5
*	C 5
*	C 5
SOCKET	D 8
SOCKET ASSY	D 7
*	D 9
SPACER	C12
SPACER, engine mount	B10
SPEEDOMETER ASSY	D 7
SPEEDOMETER CABLE ASSY	D 7
SPRING, clutch weight 1	B14
SPRING, compression	B 7
*	B12
*	B14
*	B14
*	C 2
*	C10
*	C15
SPRING, screw	D 8
SPRING, set	D 8
SPRING, tension	C12
*	C14
*	D 3
*	D 3
*	D 3
SPRING, throttle valve	B 8
SPRING, torsion	B12
*	C12

PARTS NAME INDEX

DESCRIPTION	GRID NO.
STAND, main	D 3
STARTER CLUTCH ASSY	B12
STARTER PLUNGER SET	B 8
STARTER SWITCH ASSY	D11
STARTING MOTOR ASSY	B13
STAY 1	B 7
*	B12
STAY, left shield (L.H)	D 4
STAY, left shield (R.H)	D 4
STOPPER, main stand	D 3
STOPPER, Pinion	B13
STOPPER, reed valve	B 7
SWITCH, handle 2	D12
SWITCH, handle 3	D12
TAIL LENS COMP.	D 9
TAILLIGHT UNIT ASSY	D 9
TANK, oil	C 6
TERMINAL, earth 1	B 4
TERMINAL, earth 2	B 4
THROTTLE SCREW SET	B 8
TIRE (3.50-10)	C12
*	C12
*	C14
*	C14
TOOL KIT	D 5
TRUNK, front 1	D 4
TRUNK, front 2	D 4
TUBE (3.00-10)	C12
*	C14
TUBE (3.50-10)	C12
*	C14
TUBE, throttle Guide	C15
V-BELT	B14
VALVE, throttle 1	B 8
VALVE, vacuum control	B 2
VOLTAGE REGULATOR ASSY	D10
WASHER	B12
*	C15
*	C16
*	D 7
WASHER KIT	B13
WASHER, conical spring	B14
*	B15
*	D 3
WASHER, left shield	D 4
WASHER, lock	B14
WASHER, Plain	C 9
*	D 2
WASHER, Plate	B 2
*	B 2

PARTS NAME INDEX

DESCRIPTION	GRID NO.
WASHER, Plate	B 3
*	B 5
*	B 5
*	B 5
*	B 7
*	B 7
*	B 9
*	B10
*	B12
*	B14
*	B15
*	B15
*	C 2
*	C 2
*	C 2
*	C 2
*	C 4
*	C 5
*	C11
*	C11
*	C12
*	C12
*	C14
*	C14
*	C14
*	C14
*	D 2
*	D 2
*	D 2
*	D 7
*	D 7
*	D 8
*	D10
WASHER, spring	B 3
*	B 4
*	B 4
*	B 4
*	B 5
*	B 7
*	B 8
*	B 8
*	B 9
*	B 9
*	C 2
*	C 2
*	C 2
*	C 2
*	C 4
*	C 8
*	C 9
*	C10

PARTS NAME INDEX

DESCRIPTION	GRID NO.
WASHER, spring	C11
*	C11
*	C15
*	D 4
*	D 7
*	D 7
WASHER, wave	B 8
WHEEL, starter (66T)	B12
WIRE HARNESS ASSY	D11
WIRE HARNESS ASSY 2	D10
WIRE, minus lead	D11
WIRE, Plus lead	D11
WIRE, starter	B13

501

100

100