

## *M65-C COMPETITION*

*65cc - 2 stroke - 6 speed - liquid cooled*



Opdateret  
10-06-2006 pec

**LUKS CENTRAL-LAGER**

Tlf 62 21 95 09 -- E-Mail.. [luks@adr.dk](mailto:luks@adr.dk)  
[www.luks.dk](http://www.luks.dk)

---

65cc - 2 STROKE - 6 SPEED  
M65-C COMPETITION

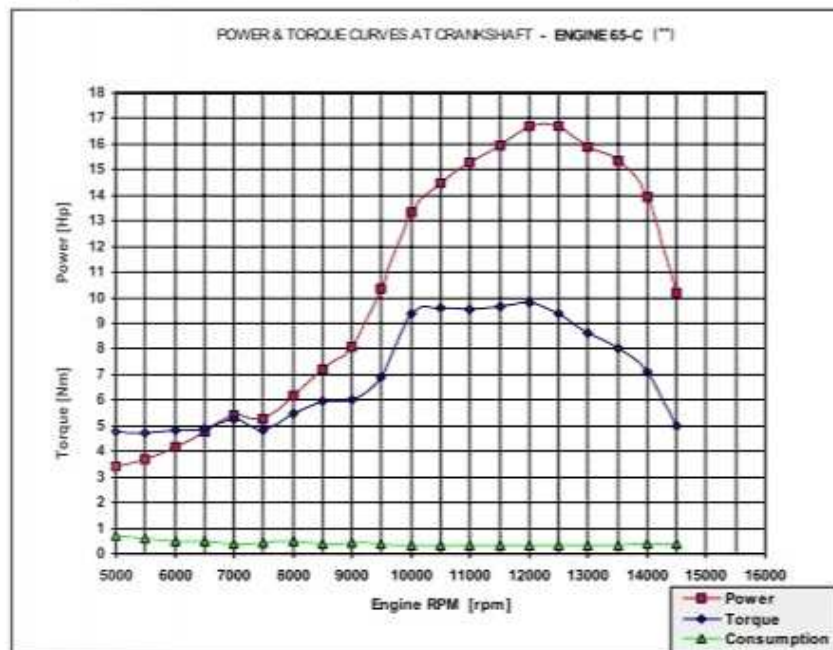


TECHNICAL DATA SHEET

ENGINE	Two-Stroke Single Cylinder
CYLINDER	Light alloy with nickel silicon carbide plated liner with 7 scavenge ports plus double exhaust scavange ports
INTAKE DISTRIBUTION	By 4 blade fiber carbon reed valve in engine block
BORE	44,50 mm
STROKE	41,75 mm
DISPLACEMENT	64,93 cc
COMPRESSION RATIO	15,5 +/- 0,5:1
MAX POWER CRANKSHAFT	16,7 Hp (12,3 kW) at 12500 rpm
MAX POWER WHEEL	15,2 Hp (11,2 kW) at 12500 rpm
MAX TORQUE CRANKSHAFT	9,8 Nm at 12000 rpm
MAX RPM	15000 rpm
COOLING	Liquid cooled forced circulation by pump
CARBURATOR	Dell'Orto PHBL 24 with manual starter by lever
LUBRIFICATION	Petrol with + 2% oil mixture synthetic (Castrol TTS)
IGNITION	Electronic magnatic flywheel with internal rotor Ø 36mm and microprocessor ignition timing management. External ignition coil. Ignition advance 33° +/- 2° a 4000 rpm
STARTER	By kick starter (backwards kick)
CLUTCH	Multiple disk type in oil bath
TRANSMISSION TYPE	6 speed
PRIMARY TRANSMISSION	With helical gears Ratio sprocket/crown Z 21/74 = 3,524 1. speed = 11/40=0,636 2. speed = 15/37=2,466 3. speed = 18/34=1,889 4. speed = 20/30=1,50 5. speed = 23/28=1,217 6. speed = 25/27=1,08
SECONDARY TRANSMISSION	By chain 5/2 x 3/16" col 8,51mm (chain sprocket Z12 or Z13)
CHAIN ALIGNMENT	86 mm
SPARK PLUG	Champion CS3 / NGK B10SEGV M14x1,25
FUEL	EURO unleaded NC 823-02 R.O.N. 95
LUBRIFICATION OIL TYPE	CASTROL TTS
OIL TYPE	AGIP 2T or CASTROL 2T - TTS
DRY WEIGHT	13,2 kg
OIL CAPACITY TRANSMISSION	0,44 kg tipo SAE 15W/40

ENGINE TYPE: M65-C Competition Liquid Cooled  
POWER - TORQUE - CONSUMPTION

Max power at crankshaft<sup>(\*)</sup>: 12.3 kW (= 16.7 Hp)  
Max torque at crankshaft<sup>(\*)</sup>: 9.80 Nm



\* The indicated performance values are to be considered as minimum values registered according to MORINI FRANCO MOTORI S.p.A. standard specification RS140.

\*\* The engine has been tested mounted with MORINI FRANCO MOTORI accessories and the registered power, torque and consumption curves can therefore divert relatively depending on the influence from using specific customized accessories. (especially air filter box and exhaust system)

**RADIATOR**

-Suggested radiator surface > 2,5 dm<sup>2</sup> (not screened)

-Thermostat temperature operation range: 50 ° - 65°

**AIR FILTER BOX**

-Sponge filter element saturated with 2-T oil, filter surface S = 2 dm<sup>2</sup>

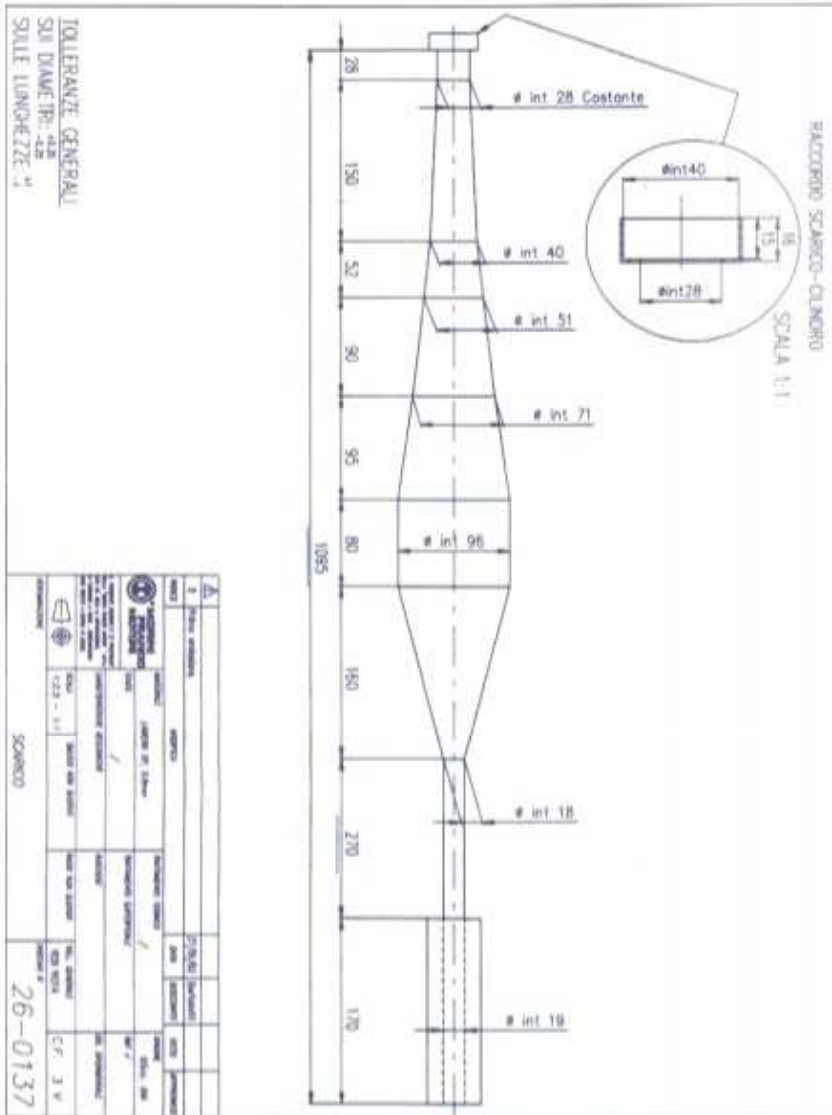
-Air entrance chamber volume V<sub>1</sub> > 1,5 dm<sup>3</sup>

-Air exit chamber volume V<sub>2</sub> > 1,0 dm<sup>3</sup>

**EXHAUST SYSTEM-**

**Enclosed drawing of suggested exhaust system**

**UDSTØDNINGS DATA**



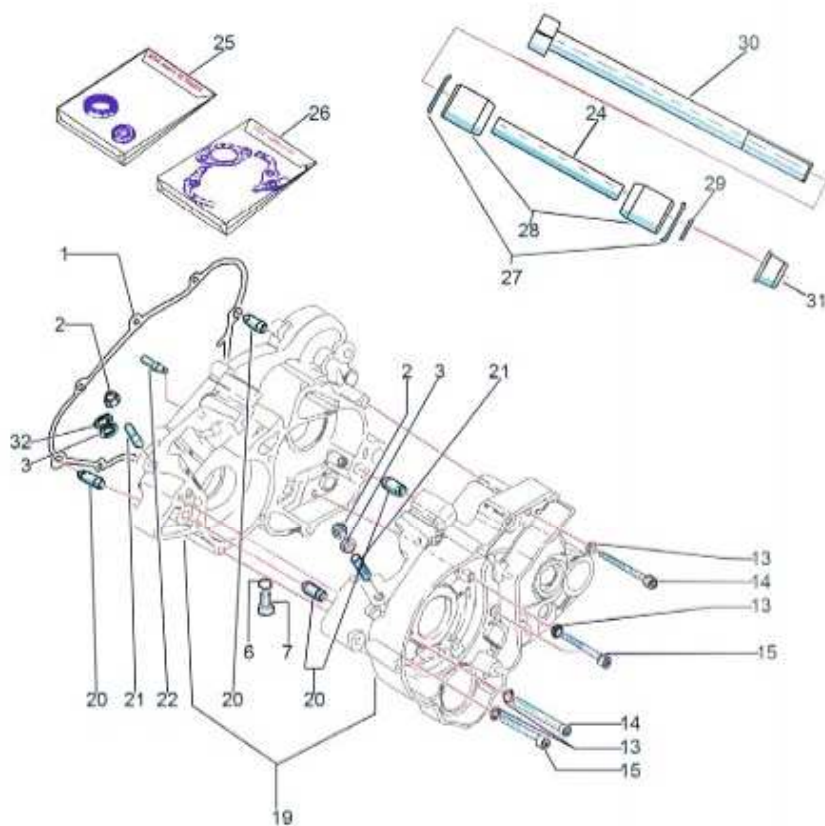
**MOTOR**  
65cc

**UDSTØDNING**  
Mdl : code 0105  
Udstødning 65cc -6M CRM.srl

**Tavle**  
**Udstødning**



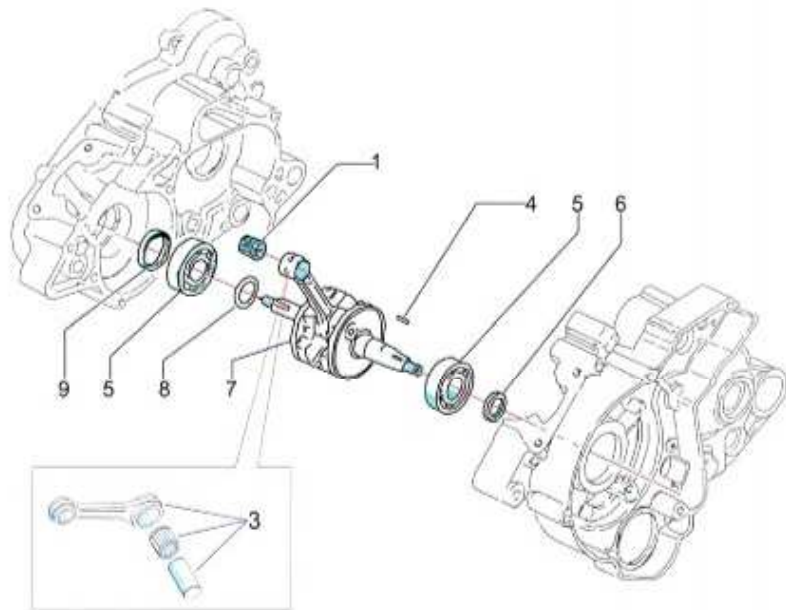
MOTOR 65cc	<b>MOTOR BLOKKE CRANCKCASE</b>	Tavle A
---------------	------------------------------------	---------



MOTOR 65 cc	<b>MOTOR BLOKKE CRANCKCASE</b>	Tavle A
----------------	------------------------------------	---------

Fig. No.	Code	Qty.	Description
A.01	16 - 4 2 1 9	1	CLUTCH COVER GASKET
A.02	13 - 1 0 2 4	4	CYLINDER HEAD NUT
A.03	25 - 4 1 6 5	4	FLAT WASHER
A.06	16 - 4 2 2 2	1	OIL DRAIN SEAL
A.07	29 - 4 1 3 2	1	SCREW TE 8X10
A.13	25 - 4 1 3 5	12	FLAT WASHER 6X11X1
A.14	29 - 1 9 9 2	3	SCREW TCE 6X55
A.15	29 - 1 9 9 1	2	SCREW TCE 6X50
A.19	12 - 0 7 1 9	1	CASING COMPLET FM 65cc
A.20	16 - 7 0 2 6	4	CRANKCASE-COVER COUPLING
A.21	77 - 3 3 0 7	4	CYLINDER FIX.STUD BOLT
A.22	23 - 1 0 9 9	1	GEAR STOPPER LEVER PIN
A.24	13 - 6 1 4 8	1	SPACER FM 65cc
A.25	26 - 0 5 3 8	1	SET OF SEAL
A.26	26 - 0 6 6 0	1	SET OF GASKETS
A.27	25 - 4 2 7 6	2	SPRING WASHER D 8,4X32X2
A.28	26 - 8 2 7 9	2	SILENT BLOCK REAR MOUNT 65cc
A.29	25 - 4 2 7 5	1	RONDELLE PLATE UNI 6592 INOX
A.30	29 - 6 1 7 4	1	SCREW
A.31	13 - 1 0 4 3	1	DIN 982 INOX FLANGED - SELF-LOCKING NUT
A.32	25 - 4 2 3 8	4	SPRING WASHER

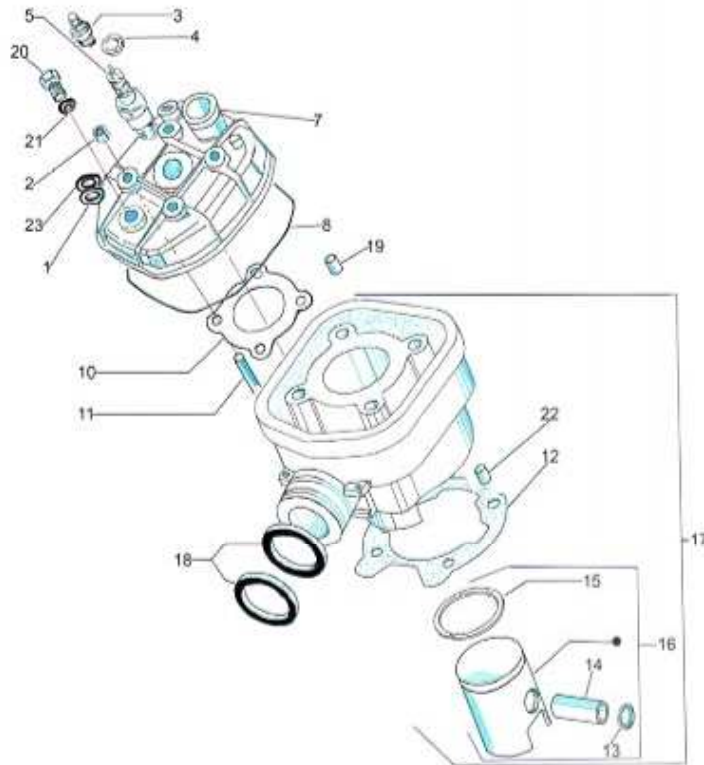
MOTOR 65 cc	<b>KRUMTAP CRANKSHAFT</b>	Tavle B
----------------	-------------------------------	---------



MOTOR 65 cc	<b>KRUMTAP CRANKSHAFT</b>	Tavle B
----------------	-------------------------------	---------

Fig. No.	Code	Qty.	Description
B.01	16-1024	1	CAGE KBK 12X15X15
B.03	11-0049	1	CONNECTING ROD COMPLETE 65cc
B.04	12-7025	1	FLYWHEEL KEY
B.05	12-6078	2	BEARING C5H TN9 17X40X12
B.06	10-6041	1	DRIVE SHAFT SEAL
B.07	10-0193	1	CRANKSHAFT FM 65CC COMPLETE
B.08	25-4126	1	WASHER, CLUTCH CASING
B.09	10-6040	1	CLUTCH DRIVE SHAFT SEAL

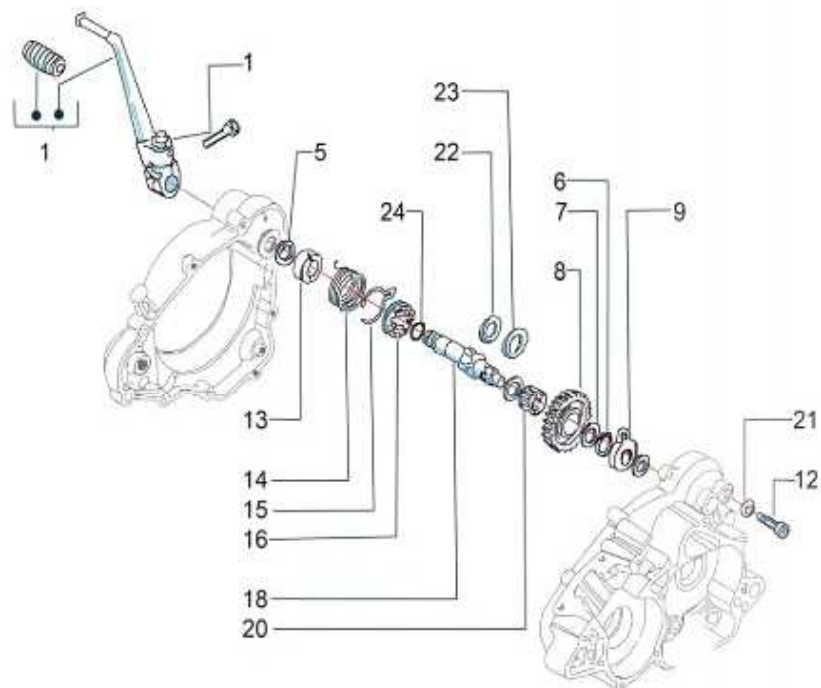
MOTOR 65 cc	<b>CYLINDER - TOP- STEMPEL</b> <b>CYLINDER - HEAD - PISTON</b>	Tavle C
----------------	---	---------



MOTOR 65 cc	<b>CYLINDER - TOP - STEMPEL</b> <b>CYLINDER - HEAD - PISTON</b>	Tavle C
----------------	--	---------

Fig. No.	Code	Qty.	Description
C.01	25 - 4165	4	PLAT WASHER
C.02	13 - 1024	4	CYLINDER HEAD NUT
C.03	29 - 6066	1	WATER DRAIN SCREW, TE 8X10
C.04	16 - 4175	1	DISCHARGE GASKET
C.05	12 - 7348	1	SPARK PLUGS CHAMPION C55
C.07	27 - 5096	1	65cc HEAD-CYLINDER
C.08	10 - 7028	1	SEAL
C.10	16 - 4315	1	HEAD GASKET 65cc
C.11	23 - 5041	4	HEAD+CYLINDER STUD BOLT
C.12	16 - 4316	1	CYLINDER BASE GASKET 0,3 65cc
	16 - 4317	1	CYLINDER BASE GASKET 0,4 65cc
	16 - 4318	1	CYLINDER BASE GASKET 0,5 65cc
C.13	10 - 4069	2	PIN HOLDING RING 65cc
C.14	26 - 8262	1	PIN 65cc
C.15	26 - 1110	1	PISTON RING D44,5X1,9 65cc
C.16	23 - 0202	1	PISTON COMPLETE 65cc
C.17	77 - 4769	1	CYLINDER + PISTON KIT COMPLETE 65cc
C.18	10 - 7065	2	O-RING SEAL
C.19	25 - 7157	2	SPROCKET 3X9,8 DRIVE ROLLER
C.20	77 - 3344	1	SCREW
C.21	77 - 3317	1	GASKET
C.22	25 - 7090	2	ROLLER 3X11,8
C.23	25 - 4238	4	SPRING WASHER

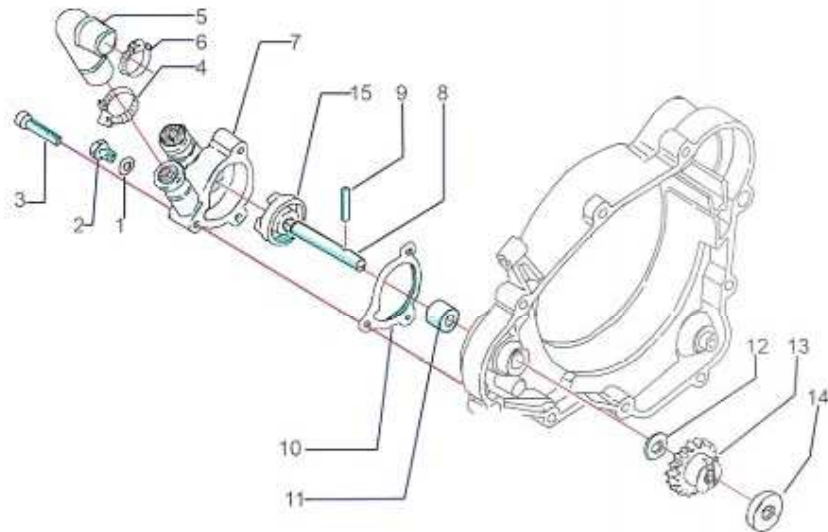
MOTOR 65 cc	<b>KICHSTARTER STARTING SHAFT</b>	Tavle D
----------------	---------------------------------------	---------



MOTOR 65 cc	<b>KICHSTARTER STARTING SHAFT</b>	Tavle D
----------------	---------------------------------------	---------

Fig. No.	Code	Qty.	Description
D.01	19 - 1062	1	ARTICULATED STARTING LEVER
D.05	77 - 3366	1	CIRCLIP
D.06	10 - 5035	1	CIRCLIP DIN 471
D.07	77 - 3358	2	TRUST WASHER FOR STARTING GEAR
D.08	77 - 3359	1	STARTING GEAR
D.09	23 - 7116	1	STARTER STOPPER PLATE
D.12	77 - 3346	1	STOPPER PLATE SETSCREW
D.13	77 - 3364	1	SPRING SPACER
D.14	77 - 3363	1	STARTING SHAFT RETURN SPRING
D.15	77 - 3362	1	SLEEVE SPRING
D.16	77 - 3361	1	STARTING SLEEVE
D.18	77 - 3354	1	STARTER SHAFT
D.20	77 - 3360	1	ROLLER CAGE 16X20X10
D.21	16 - 4223	1	SCREW SEAL
D.22	25 - 4047	1	WASHER 0,4
D.23	25 - 4047	1	WASHER 0,5
D.24	77 - 3367	1	STARTING SHAFT O-RING

MOTOR 65 cc	<b>VANDPUMPE</b> <b>WATER PUMP</b>	<b>Tavle E</b>
----------------	---------------------------------------	----------------

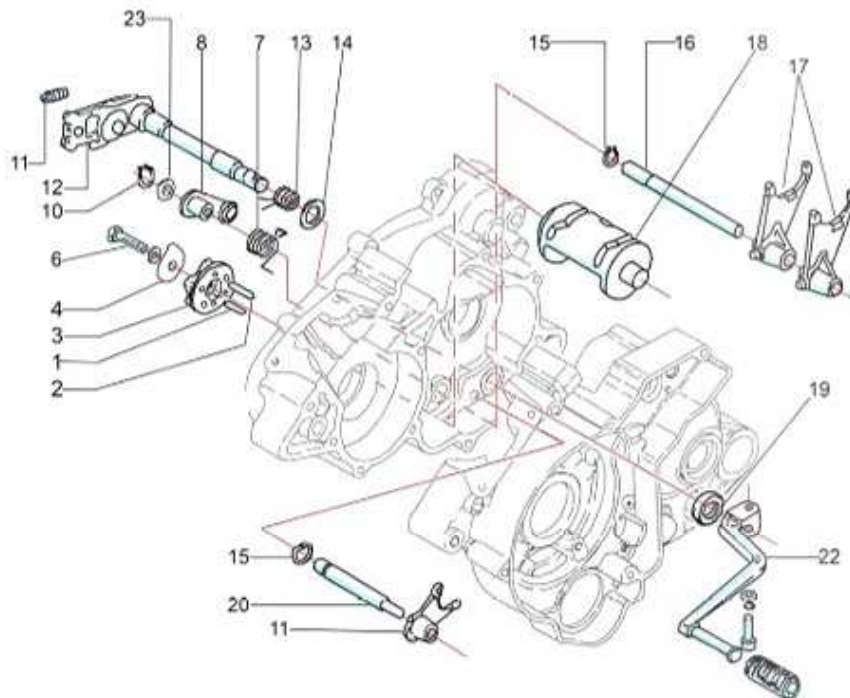


MOTOR 65 cc	<b>VANDPUMPE</b> <b>WATER PUMP</b>	<b>Tavle E</b>
----------------	---------------------------------------	----------------

Fig. No.	Code	Qty.	Description
E.01	16 - 4221	1	SEAL SCREW
E.02	29 - 4082	1	SCREW TE 6X10
E.03	29 - 1961	3	SCREW TLE 5X25
E.04	15 - 1019	1	CLAMP
E.05	27 - 7114	1	WATER DELIVERY PIPE , TO CYLINDER
E.06	15 - 1020	1	CLAMP D18
E.07	12 - 7238	1	WATER PUMP BODY WITHOUT BLOW-BY
E.08	10 - 1197	1	WATER PUMP DRIVE SHAFT
E.09	26 - 8153	1	PUMP DRIVE GEAR PIN
E.10	16 - 4220	1	CASING GASKET
E.11	10 - 6039	1	WATER PUMP SEAL 8X16X10
E.12	25 - 4095	2	WASHER 0,5
E.13	18 - 1225	1	PUMP DRIVE GEAR
E.14	26 - 8154	1	CUP 4M
E.15	16 - 7031	1	WATER PUMP IMPELLER



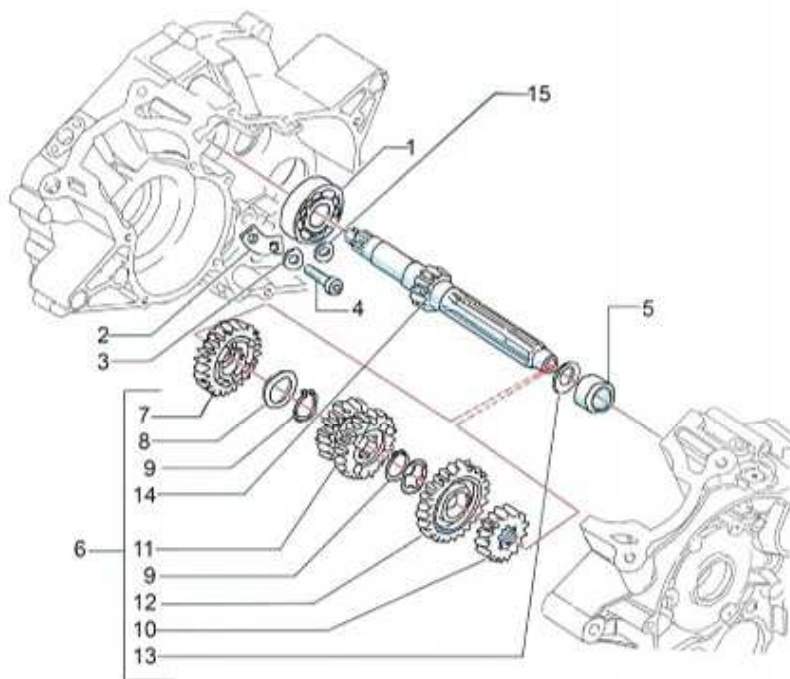
MOTOR 65 cc	<b>GEAR SKIFTER SELECTOR DRUM</b>	Tavle F
----------------	---------------------------------------	---------



MOTOR 65 cc	<b>GEAR SKIFTER SELECTOR DRUM</b>	Tavle F
----------------	---------------------------------------	---------

Fig. No.	Code	Qty.	Description
F.01	77 - 3342	1	ROLLER FOR GEAR STOPPER PLATE
F.02	77 - 3341	5	ROLLER FOR GEAR STOPPER PLATE
F.03	13 - 5048	1	GEAR STOPPER PLATE
F.04	77 - 3343	1	ROLLER HOLDING WASHER
F.06	29 - 4065	1	SCREW TE 5X25 FULL THREAD
F.07	20 - 1124	1	GEAR STOPPER LEVER SPRING
F.08	19 - 1067	1	GEAR STOP LEVER
F.10	10 - 5030	1	CIRCLIP D8
F.11	20 - 1125	1	RATCHET PAWL SPRING
F.12	26 - 0063	1	GEAR SELECTOR COMPLETE
F.13	20 - 1126	1	SHIFTER PLATE RETURN SPRING
F.14	25 - 4108	1	WASHER 0,5
F.15	10 - 5046	2	CIRCLIP FOR ROD SHOULDER
F.16	10 - 7543	1	FORK ROD SMALL
F.17	15 - 4024	2	GEAR CONTROL FORK
F.18	10 - 1198	1	SELECTOR DRUM COMPLETE 6M
F.19	10 - 6042	1	GEAR SHIFTER SHAFT SEAL
F.20	10 - 1184	1	GEARSHIFT FORK SPINDLE
F.21	15 - 4025	1	GEAR CONTROL FORK 5-6 GEAR
F.22	20 - 112350	1	GEAR LEVER 65CC
F.23	25 - 4141	1	WASHER LEVER HOLDER

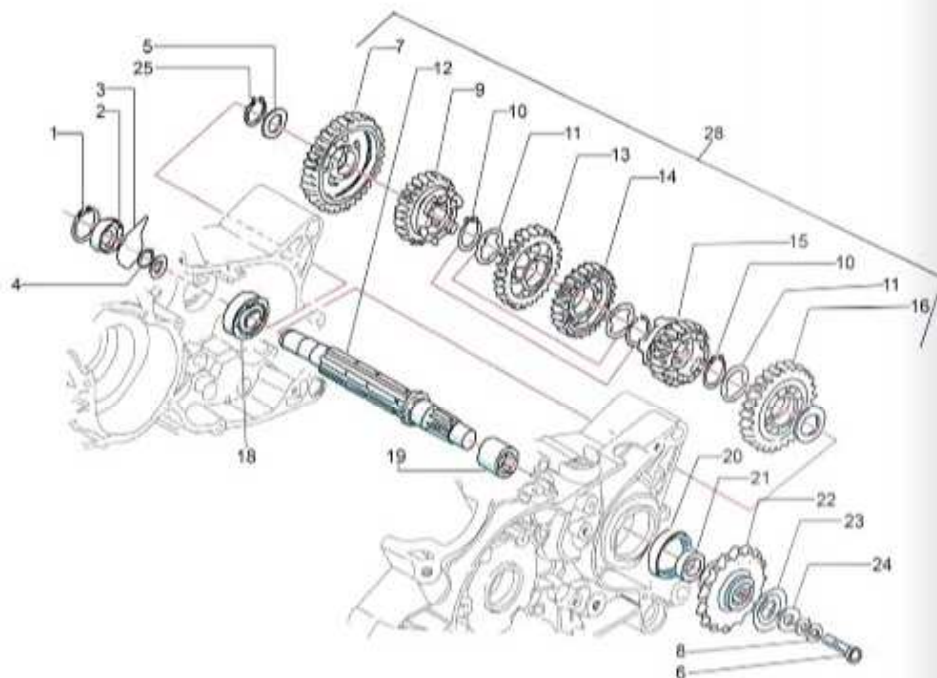
MOTOR 65 cc	<b>PRIMÆR GEAR AKSEL MAIN SHAFT</b>	Tavle G
----------------	---	---------



MOTOR 65 cc	<b>PRIMÆR GEAR AKSEL MAIN SHAFT</b>	Tavle G
----------------	---	---------

Fig. No.	Code	Qty.	Description
G.01	12 - 6029	1	BEARING 6202 C3 15X35X11
G.02	23 - 7080	1	BEARING SHOULDER HOLDER
G.03	25 - 4013	7	WASHER D5
G.04	29 - 1958	2	SCREW TCE 5X18
G.05	16 - 1036	1	PRIMARY SHAFT CASE 12X16X10
G.06	10 - 0125	1	PRIMARY SHAFT COMPLETE 6M
G.07	18 - 1229	1	5TH-SPEED GEAR
G.08	25 - 4147	2	GROOVED WASHER
G.09	10 - 4044	2	SNAP RING
G.10	18 - 1227	1	2ND-SPEED GEAR
G.11	18 - 1228	1	3RD-4TH- SPEED SLIDING GEAR
G.12	18 - 1230	1	6 <sup>TH</sup> - SPEED GEAR
G.13	25 - 404108	1	WASHER
G.14	10 - 1182	1	PRIMARY SHAFT , - 1 <sup>ST</sup> SPEED
G.15	25 - 4012	2	WASHER D5

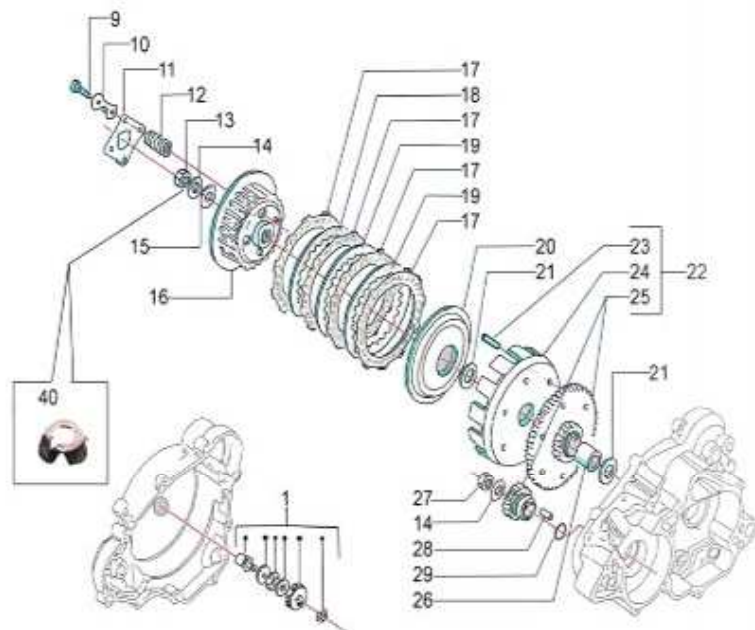
MOTOR 65 cc	<b>SEKUNDÆR GEAR AKSEL COUNTER SHAFT</b>	Tavle H
----------------	--	---------



MOTOR 65 cc	<b>SEKUNDÆR GEAR AKSEL COUNTER SHAFT</b>	Tavle H
----------------	--	---------

Fig. No.	Code	Qty.	Description
H.01	10-4064	1	SNAP RING HALF-PULLEY
H.02	25-7083	1	OIL DRIP PAN (RH CASING)
H.03	19-6021	1	OIL DRIP PLATE
H.04	77-3337	1	CIRCLIP SECOND. SHAFT
H.06	29-4140	1	SCREW
H.07	18-1231	1	1ST-SPEED GEAR
H.08	25-4149	1	SPRING WASHER
H.09	18-1235	1	SLIDING GEAR FOR 5 <sup>TH</sup> - SPEED
H.10	10-4044	3	SNAP RING
H.11	77-3330	3	INDENTED WASHER
H.12	10-1183	1	SECONDARY SHAFT 6M
H.13	18-1233	1	3RD-SPEED GEAR
H.14	18-1234	1	4TH-SPEED GEAR
H.15	18-1236	1	SLIDING GEAR FOR 6TH- SPEED GEAR
H.16	18-1232	1	2ND-SPEED GEAR
H.18	12-6028	1	SECONDARY SHAFT BEARING 12X32X10 C3
H.19	16-1037	1	SECONDARY SHAFT CASE 20X26X16
H.20	10-6043	1	SEAL 19X30X6,5
H.21	13-6088	1	SPACER
H.22	23-2610	1	Z 12 SPROCKET 65CC
	23-2618		Z 13 SPROCKET 65CC
	23-2619		Z 14 SPROCKET 65CC
H.23	25-4148	1	SPRING WASHER
H.24	26-8157	1	CUP 6M
H.25	10-5045	1	RETAINING RING ,SECON. SHAFT BEARING
H.28	10-0124	1	SECONDARY SHAFT COMPLETE

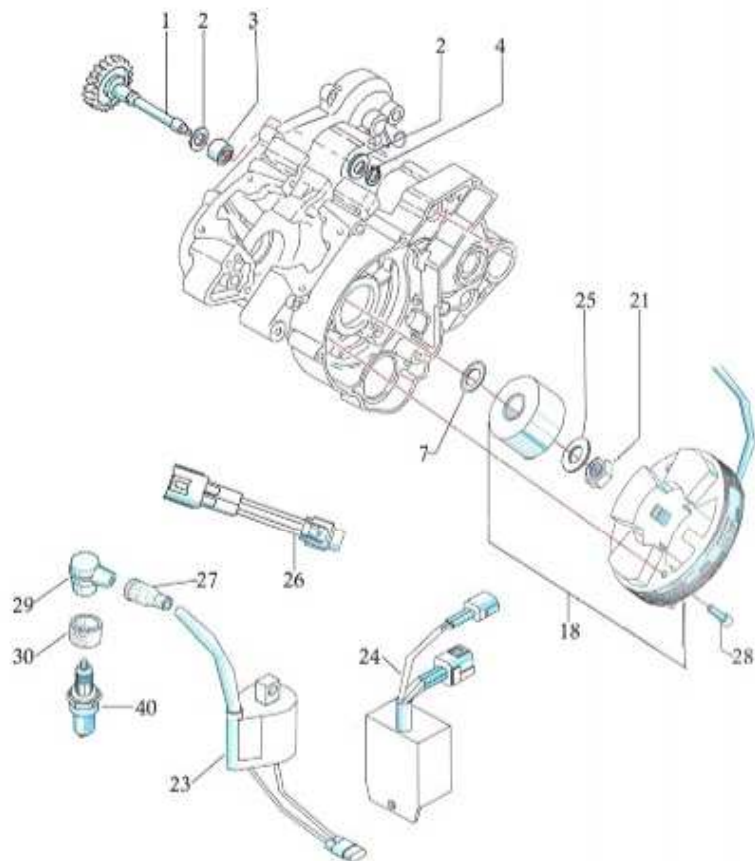
MOTOR 65 cc	<b>KOBLING CLUTCH UNIT</b>	Tavle I
----------------	--------------------------------	---------



MOTOR 65 cc	<b>KOBLING CLUTCH UNIT</b>	Tavle I
----------------	--------------------------------	---------

Fig. No.	Code	Qty.	Description
1.01	25-0107	1	THRUST BLOCK COMPLETE (GAS GAS)
1.09	29-4090	4	SCREW TE 6X25
1.10	23-7082	2	SAFETY PLATE
1.11	23-7081	1	SPRING RETAINING PLATE
1.12	20-1198	4	CLUTCH SPRING 65cc
1.13	13-1003	1	NUT M10
1.14	25-4138	2	SPRING WASHER, ZINC-PLTD YELLOW
1.15	23-7186	1	NUT STOPPING PLATE
1.16	20-6059	1	CLUTCH INNER HUB
1.17	13-5076	4	DRIVEN PLATE
1.18	13-5051	1	DRIVEN SPRING PLATE
1.19	13-5050	2	DRIVEN PLATE
1.20	26-8313	1	PLATE THRUST DISC VERSION 05
1.21	25-406408	3	WASHER 0,08
1.22	27-0072	1	COMPLETE PRIMARY GEAR PAIR
1.23	25-7084	6	RIVET
1.24	12-7237	1	CLUTCH BELL
1.25	27-0073	1	PRIMARY GEAR PAIR
1.26	13-6087	1	PRIMARY GEAR SPACER
1.27	13-1029	1	HEXAGON NUT M10X1,25
1.28	19-6022	1	ENGINE SPROCKET KEY
1.29	10-7025	1	O-RING SEAL FOR ENGINE SPROCKET
1.40	23-7186	1	SAFETY PLATE / NUT M10 (131003) LÅSEBLIK TIL KOBLING

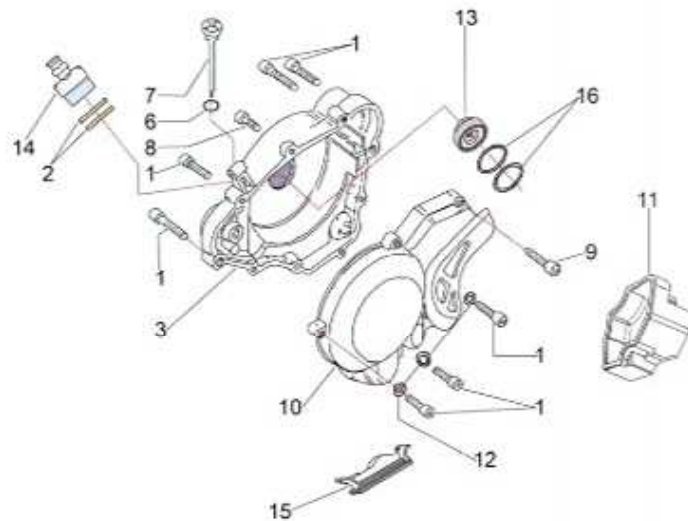
MOTOR 65cc	<b>TÆNDING</b> <b>FLYWHEEL MAGNETO</b>	Tavle L
---------------	---	---------



MOTOR 65 cc	<b>TÆNDING</b> <b>FLYWHEEL MAGNETO</b>	Tavle L
----------------	---	---------

Fig. No.	Code	Qty.	Description
L.01	18-0017	1	STARTER IDLE GEAR
L.02	25-402605	4	WASHER
L.03	16-1035	1	LAY SHAFT CASE 12X16X10
L.04	10-5006	1	CIRCLIP D12
L.07	13-6130	1	SPACER CLUTCH BELL S6-GA65
L.18	29-0159	1	FLYWHEEL COMPETITION
L.21	13-1027	1	NUT M8
L.23	14-0004	1	COIL + PLUG COMPLETE S6/COM-GA65
L.24	14-1072	1	DIGITAL CONTROL UNIT S6/C-GA65
L.25	25-4023	1	WASHER D8, 2X14X1.8
L.26	12-7345	1	CABLE FOR CONTROL UNIT
L.27	16-3051	1	SPARK PLUG RUBBER
L.28	29-1934	2	SCREW TCE 4X20
L.29	23-7146	1	SPARK PLUG CAP
L.30	16-3058	1	SPARK PLUG RUBBER
L.40 C.05	12-7348	1	SPARK PLUG CHAMPION C55

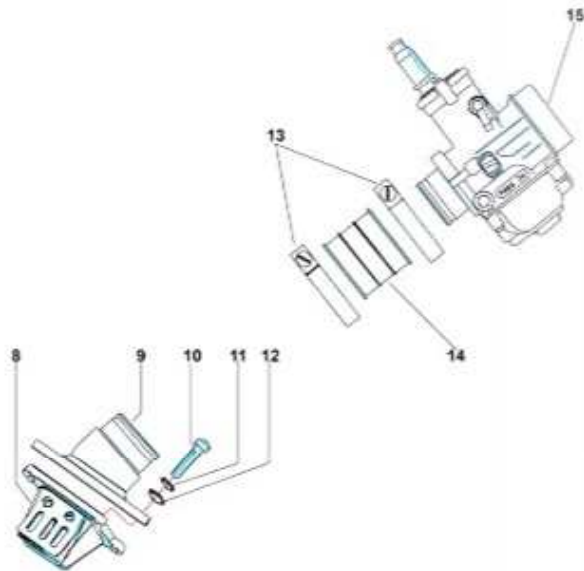
MOTOR 65 cc	<b>DÆKSEL</b> CRANKCASE HALVES COVERS	Tavle M
----------------	--	---------



MOTOR 65cc	<b>DÆKSEL</b> CRANKCASE HALVES COVERS	Tavle M
---------------	--	---------

Fig. No.	Code	Qty.	Description
M.01	29-1986	10	SCREW TCE 6X25
M.02	25-4247	2	PLATE WASHER 14X10X1,5
M.03	12-4279	1	CLUTCH COVER 65cc
M.06	10-7023	1	O-RING SEAL FOR ROD
M.07	10-7542	1	OIL DIPSTICK
M.08	29-1984	2	SCREW TCE 6X20
M.09	29-1989	7	SCREW TCE 6X40
M.10	12-4281	1	FLYWHEEL COVER 65cc
M.11	16-3084	1	RUBBER FLYWHEEL COVER 65cc
M.12	25-4001	3	WASHER D6
M.13	23-3610	1	HYDRALIC PISTON CLUTCH COVER 65cc
M.14	25-1177	1	CONNECTION CLUTCH COVER 65cc
M.15	16-3090	1	FLYWHEEL COVER RUBBER PLASTIC UNDER TENDINGS DÆKSEL

MOTOR 65 cc	<b>KARBURATOR</b>	Tavle N
----------------	-------------------	---------



\*\*

Karburator beskrivelse se tavle P

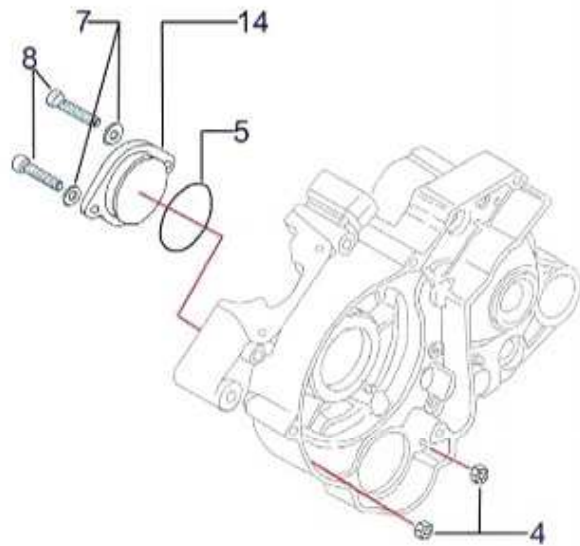
MOTOR 65 cc	<b>KARBURATOR</b>	Tavle N
----------------	-------------------	---------

Fig. No.	Code	Qty.	Description
N.08	29 - 0554	1	REED VALVE 65cc
N.09	25 - 1175	1	CARBURETTOR CONNECTION
N.10	29 - 1986	4	SCREW TCE 6X25
N.11	25 - 4017	4	SPLIT WASHER D6
N.12	25 - 4153	4	WASHER
N.13	15 - 1040	2	CLIMP CARBURATTOR 65cc
N.14	20 - 6099	1	COUPLING RUBBER 65cc
N.15	12 - 0862	1	CARBURETTOR 24 PHBL R.2869

\*\*

Karburator beskrivelse se tavle P

MOTOR 65 cc	<b>FLANCER</b>	Tavle O
----------------	----------------	---------

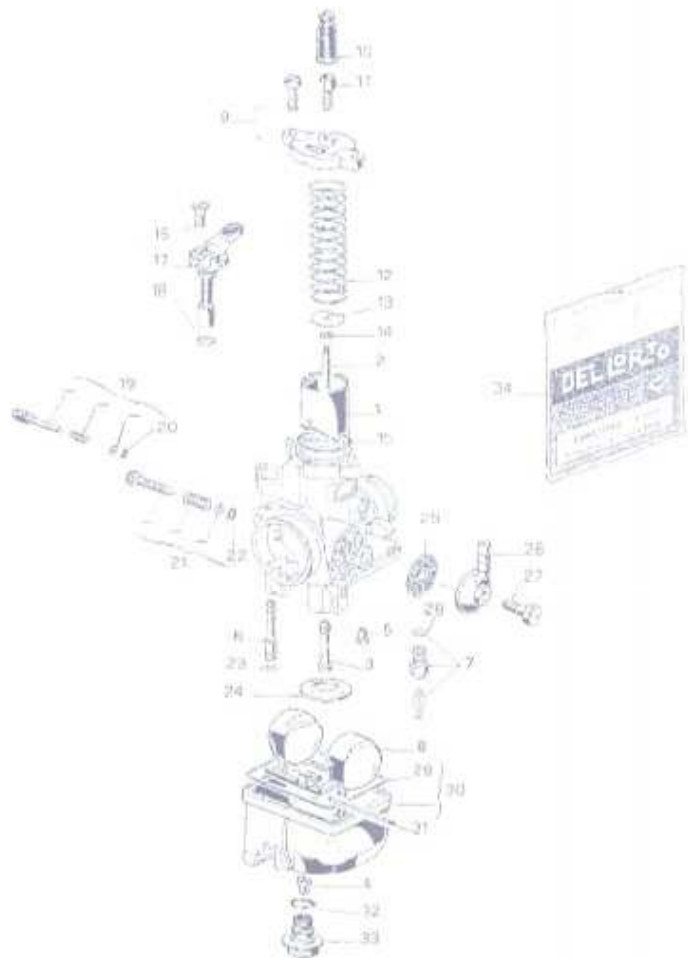


MOTOR 65 cc	<b>FLANCER</b>	Tavle O
----------------	----------------	---------

Fig. No.	Code	Qty.	Description
O.04	13-1001	2	NUT H6 M6
O.05	10-7031	1	O-RING SEAL ADLER 36X1,5
O.07	25-4001	5	WASHER D6
O.08	29-1986	2	SCREW TCE 6X25
O.14	77-3351	1	LOCK UP FLANCE FOR OIL MIXER



MOTOR 65 cc	<b>KARBURATOR</b> Dellorto PHBL 24 BS. Reg. 2869	Tavle P
----------------	---	---------



MOTOR 65 cc	<b>KARBURATOR</b> Dellorto PHBL 24 BS. Reg. 2869	Tavle P
----------------	---	---------

Fig. No.	Code	Description
1	9 6 4 5 x 6 4	GASSPJELD (40)
2	2 2 6 5 X 0 8	GASNÅL (D)
3	9 5 6 4 X 2 8	NÅLESTYR AQ (264)
4	6 4 1 3 X 0 2	HOVEDDYSE (100)
5	1 4 8 6 X 0 2	DYSE TOMGANG (50)
6	7 7 4 6 X 0 2	DYSE (60)
7	9 4 3 6 X 3 3	SVØMMERNÅL
8	9 0 1 0 X 8 0	SVØMMER
9	5 3 0 3 3 - 7 8	KIT TOPDÆKSEL
10	1 4 7 6 - 0 6	GUMMI
11	1 1 0 4 - 3 7	STILLESKRUE
12	9 6 4 4 - 6 1	GASFJEDER
13	9 5 6 3 - 2 1	LÅSESKIVE
14	9 5 9 6 - 2 1	LÅSERING
15	6 0 1 3 - 3 0	O-RING FOR TOPDÆKSEL
16	7 7 4 5 - 3 6	SKRUE
17	8 2 9 4 - 6 4	CHOKER
19	5 3 0 2 2 - 7 8	KIT FOR LUFTSKRUE
20	6 1 7 3 - 3 0	O-RING
21	5 3 0 2 8 - 7 8	KIT FOR TOMGANGSSKRUE
24	9 9 9 6 - 5 2	SKVULPEPLADE
25	6 1 0 9 - 2 9	BENZIN FILTER
26	9 2 5 0 - 3 8	DÆKSEL FOR BENZINFILTER
27	4 5 6 8 - 3 6	SKRUE FOR DÆKSEL
29	9 4 2 4 - 3 0	O-RING FOR BUNDKAR
30	1 3 7 8 1 - 9 6	BUNDKAR
31	7 3 4 6 - 2 2	STIPT FOR SVØMMER
32	7 8 3 4 - 3 0	O-RING FOR BUNDSKRUE
33	1 1 7 7 1 - 3 4	BUNDSKRUE
34	5 2 5 2 4 - 7 7	PAKNINGSSÆT