

# General LC Workflow Supplies Recommendations (1220/1260/1290)

Standard Configuration + Featured Supplies = Better Customer Experience

## InfinityLab Solvent and Sample Containers

### InfinityLab Solvent Bottles

- 9301-6524: InfinityLab Solvent Bottle, GL45, Clear, 1 L
- 9301-6526: InfinityLab Solvent Bottle, GL45, Amber, 1 L
- 9301-6342: InfinityLab Solvent Bottle, GL45, Clear, 2 L
- 9301-6341: InfinityLab Solvent Bottle, GL45, Amber, 2 L
- 9301-6529: InfinityLab Identification Silicone Rings, 8/pk



### InfinityLab Stay Safe Caps

- 5043-1222: InfinityLab Stay Safe Caps Starter Kit Including 4 Caps, 4 Venting Valves and 4 Fittings
- 5043-1217: InfinityLab Stay Safe Cap, 1 port, incl. 1 fitting and 1 venting valve
- 5043-1218: InfinityLab Stay Safe Cap, 2 ports, incl. 2 fittings and 1 venting valve



### InfinityLab Stay Safe Purging Bottle

- 5043-1339: InfinityLab Stay Safe purging bottle, 1L with four GL45 openings



### InfinityLab Waste Can

- 5043-1221: InfinityLab Stay Safe Cap and Waste Can Kit, incl. Stay Safe Cap with 4 Ports for waste and 6 L Waste Can
- 5043-1336: InfinityLab Stay Safe cap, S60 thread, for waste can
- 5043-1337: 10 L Waste Can with S60 Thread
- 5043-1193: InfinityLab Charcoal Filter with Time Strip



## Improve Customer Satisfaction via Featured Supplies Recommendation

### InfinityLab LC Capillaries and Fittings



#### InfinityLab Quick Connect Fitting

- 5067-5957: InfinityLab Quick Connect Fitting Assembly Including Stainless Steel Capillary 0.12x105 mm, for 1290 Systems
- 5067-6166: InfinityLab Quick Connect Fitting Assembly Including Stainless Steel Capillary 0.17x105 mm, for 1260 Systems

#### InfinityLab Quick Turn Fitting

- 5067-5966: InfinityLab Quick Turn Fitting
- 5500-1191: InfinityLab Quick Turn Capillary ST 0.12x280 mm
- 5043-0915: Mounting Tool for InfinityLab Quick Turn Fitting

### InfinityLab LC Flex Benches : Improve Flexibility and Safety in Setup of Agilent LC Instruments



Agilent FlexBench (5043-1759\*)



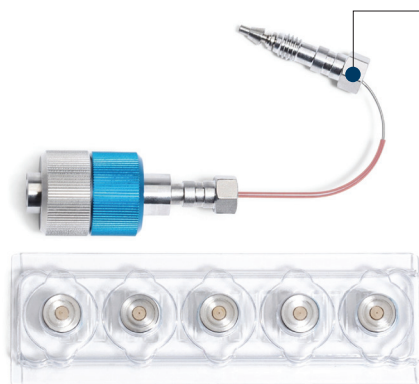
Agilent FlexBench MS (G6015B\*) for Agilent Ultivo QQQ LC/MS and InfinityLab LC/MSD



Agilent Benchtop (5043-1740\*)

*\*with power strip, available in regions except Asia Pacific. For Asia Pacific please use part numbers for benches without power strip: 5043-1252, G6015A, 5043-1711 from left to right*

## New in 2021: InfinityLab Quick Change Inline Filter



- 5067-1603: InfinityLab Quick Change Inline Filter Assembly for 1290 Systems, with 2.1 mm id, 0.2 µm Filter Discs
- 5067-1602: InfinityLab Quick Change Inline Filter Assembly for 1260 Systems, with 4.6 mm id, 0.5 µm Filter Discs

### Ultimate ease of use:

- Finger-tight, tool-free replacement of filter disc;
- Click & Seal: a click alerts when the filter is tight up to 1300 bar, assuring no risk of over- or under-tightening.

### Robustness for low operational cost

- Through robust filter housing that enables over 100 replacements of filter discs without any damage.

### Prevent column clogging

- Eliminating the pressure increases and column damage caused by particles with a quick and easy filter disc replacement.

## General LC Workflow Supplies Recommendations (1220/1260/1290)

PN	Description	1st Purchasing Quantity Recommendation	Reasoning and Selling Points	Part Family
5067-1603	InfinityLab Quick Change Inline Filter Assembly for 1290 Systems, with 2.1 mm id, 0.2 µm Filter Discs	1	Extend column lifetime, easy-to-use with finger-tight replacement, touchless packaging for easy replacement <b>(2021 New Product)</b>	Inline Filters
5067-1602	InfinityLab Quick Change Inline Filter Assembly for 1260 Systems, with 4.6 mm id, 0.5µm Filter Discs	1	Extend column lifetime, easy-to-use with finger-tight replacement, touchless packaging for easy replacement <b>(2021 New Product)</b>	Inline Filters
5067-5957	InfinityLab Quick Connect Fitting Assembly Including Stainless Steel Capillary 0.12x105 mm, for 1290 Systems	1	For finger-tight connection onto column inlet, pressure stability up to 1300 bar, spring-loaded design to ensure zero-dead-volume <b>(R&amp;D 100 finalist 2015 and TASIA Award 2014)</b>	LC Capillaries and Fittings
5067-6166	InfinityLab Quick Connect Fitting Assembly Including Stainless Steel Capillary 0.17x105 mm, for 1260 Systems	1	For finger-tight connection onto column inlet, pressure stability up to 1300 bar, spring-loaded design to ensure zero-dead-volume <b>(R&amp;D 100 finalist 2015 and TASIA Award 2014)</b>	LC Capillaries and Fittings
5067-5966	InfinityLab Quick Turn Fitting	2	For connections on column outlet and detector, finger-tight up to 600 bar, spring-loaded design to ensure zero-dead-volume	LC Capillaries and Fittings
5500-1191	InfinityLab Quick Turn Capillary ST 0.12x280 mm	1	For connection between column outlet and detector, used with Quick Turn fitting (5067-5966)	LC Capillaries and Fittings

## General LC Workflow Supplies Recommendations (1220/1260/1290)

PN	Description	1st Purchasing Quantity Recommendation	Reasoning and Selling Points	Part Family
5043-0915	Mounting Tool for InfinityLab Quick Turn Fitting	1	Plastic tool to tighten Quick Turn fitting for high pressure up to 800 bar	LC Capillaries and Fittings
5043-1222	InfinityLab Stay Safe Cap Kit Including 4 Caps, 4 Venting Valves and 4 Fittings	1	For stopping solvent vapor from solvent bottles leaching into the air. The GL45 thread allows to fix the stay safe caps to the Agilent solvent bottles	Solvent and Sample Containers
5043-1338	InfinityLab Stay Safe Cap/Waste Can Kit, Stay Safe Cap S60 with 4 Ports Plus 10 L Waste Can	1	For safely collecting your system waste and prevent solvent vapor from leaching into the air, requires charcoal filter (5043-1193) <b>(2020 New Product)</b>	Solvent and Sample Containers
5043-1221	InfinityLab Stay Safe Cap/Waste Can Kit, Stay Safe Cap with 4 Ports and Leak Hose Plus 6 L Waste Can	1	For safely collecting your system waste and prevent solvent vapor from leaching into the air, requires charcoal filter (5043-1193)	Solvent and Sample Containers
5043-1193	InfinityLab Charcoal Filter with Time Strip	2	Charcoal filter for absorbing the volatile compounds from Stay Safe Caps waste solution, with time strip to remind the user to replace it regularly	Solvent and Sample Containers
5043-1339	InfinityLab Stay Safe Purging Bottle	1	For easy and secure purging of up to four solvent channels, prevent solvent vapor from leaching into the air <b>(2021 New Product)</b>	Solvent and Sample Containers
9301-6526	InfinityLab Solvent Bottle, GL45, Amber, 1 L	1	Amber glass bottle to mitigate photodegradation of sensitive solvents or buffers	Solvent and Sample Containers
9301-6342	InfinityLab Solvent Bottle, GL45, Clear, 2 L	1	2 L clear glass bottle	Solvent and Sample Containers
9301-6341	InfinityLab Solvent Bottle, GL45, Amber, 2 L	1	2 L amber glass bottle	Solvent and Sample Containers
9301-6529	InfinityLab Identification Silicone Rings, 8/pk	1	Color identification for solvent bottles	Solvent and Sample Containers
9301-6530	Stickers, for InfinityLab solvent bottles, 100/pk	1	Removable stickers for easy label removal without any residue	Solvent and Sample Containers
5043-9310	InfinityLab Well-plate 96/0.5 mL, 30/pk	1	In combination with the closing mat the plates have been tested on all Agilent autosamplers	Well-plate
5042-1389	InfinityLab Well-plate Closing Mat, 50/pk	1	In combination with the plates the closing mat have been tested on all Agilent autosamplers	Well-plate
5191-6776	InfinityLab Solvent Filtration Assembly, Including Glass Funnel, 250 mL, Membrane Holder Glass Base, Glass Flask, 1 L, and Aluminum Clamp	1	For preparing suitable mobile phases for HPLC and UHPLC . It can prevent small impurities in the solvent from clogging the system filter or LC column, causing excessive pressure, especially recommended for buffers	LC Filtration
5191-4340	InfinityLab Filter Membrane, Regenerated Cellulose 47 mm, Pore Size 0.2 µm, 100/pk	1	Most common membrane filters for 5191-6776	LC Filtration
01018-60025	Stainless Steel Solvent Inlet Filter, 10 µm	4	Smaller pore size than standard glass filter, recommended for buffers and LC/MS	LC Filtration
5043-1759* 5043-1252**	InfinityLab Flex Bench	1	For highest flexibility in the setup of Agilent LC instruments and to easily move the system everywhere in the lab	LC Bench
5043-1740* 5043-1711**	InfinityLab Benchtop	1	For existing lab benches, improve flexibility in setup of Agilent LC instruments	LC Bench
G6015B* G6015A**	InfinityLab Flex Bench MS	1	Allows you to keep your Agilent InfinityLab LC/MSD or Ultivo LC/MS systems in one stack with easy access to all areas	LC Bench

\* with power strip, available except in Asia Pacific

\*\* without power strip, for Asia Pacific

## 1290 Infinity II LC Workflow Supplies Recommendations



InfinityLab Long-life HiS Deuterium Lamp



1290 Infinity II LC Workflow

PN	Description	1st Purchasing Quantity Recommendation	Reasoning and Selling Points	Part List for Kit	Part Family
5190-0917	InfinityLab Long-life HiS Deuterium Lamp, with RFID Tag, for Diode Array Detector (G7117A/B/C)	1	Spare lamp for G7117A/B/C to avoid system downtimes if lamp is at the end of its life time.		LC Lamps
G1314-60101	InfinityLab Long-life HiS Deuterium Lamp, with RFID Tag, for Variable Wavelength Detectors (G7114A/B)	1	Spare lamp for G7114A/B to avoid system downtimes if lamp is at the end of its life time.		LC Lamps
G7120-68741	InfinityLab Preventive Maintenance Kit for High Speed Pump (G7120A)	1	Our study showed that conducting PM instead of replacing the parts when defect can reduce system downtime and troubleshooting leading to higher than 30% cost reduction.	The kit contains 4 pump seals (0905-1719), 2 sets of seal cap assembly (5067-4728), peristaltic pump (5065-4445), PTFE frits 5/pk (01018-22707), 2 gold seals for outlet valve (G4220-20020) and 4 seal washes (0905-1175).	PM Kit
G7104-68741	InfinityLab Preventive Maintenance Kit for Flexible Pump (G7104A)	1	Our study showed that conducting PM instead of replacing the parts when defect can reduce system downtime and troubleshooting leading to higher than 30% cost reduction.	The kit contains 2 pump seals (0905-1719), frit assembly (5067-5717), peristaltic pump (5065-4445), frits for 1290 inline filters 5/pk (5023-0271), gold seal for outlet valve (G4220-20020) and 2 seal wash (0905-1175).	PM Kit
G7167-68710	InfinityLab Preventive Maintenance Kit for Multisampler (G7167B), Standard Configuration	1	Our study showed that conducting PM instead of replacing the parts when defect can reduce system downtime and troubleshooting leading to higher than 30% cost reduction.	The kit contains needle assembly (G4267-87201), needle seat (G4267-87012) and injection valve rotor seal (5068-0198)	PM Kit

## 1290 Infinity II LC Workflow Supplies Recommendations

PN	Description	1st Purchasing Quantity Recommendation	Reasoning and Selling Points	Part List for Kit	Part Family
G7167-68720	InfinityLab Preventive Maintenance Kit for Multisampler (G7167B), Dual Needle Configuration	1	Our study showed that conducting PM instead of replacing the parts when defect can reduce system downtime and troubleshooting leading to higher than 30% cost reduction.	The kit contains needle assembly (G4267-87201), 2 needle seats (G4267-87012), rotor seal valve DN (5068-0232) and rotor seal peripheral valve (5068-0229).	PM Kit
5067-6616	1290 Infinity II Convenience Kit	1	Perfect starter kit for the 1290 Infinity II system, providing a carefully selected portfolio of InfinityLab supplies for efficient ramp up usage of new InfinityLab LC instruments.	The kit contains solvent bottles (3x clear (9301-6524), 1x amber (9301-6526)), Stay Safe Caps Starter Kit (5043-1222), pack of 500 vials clear with bonded pre-slit caps (5190-7023), 4 solvent inlet filters stainless steel (01018-60025), inline filter kit (5067-6189), PTFE frits 5/pk (01018-22707), column holder clamps 2/pk (G7116-68004), column holder lamella 2/pk (G7116-68003) and complete contents of 1290 Infinity II capillary kit (5067-6615)	Starter Kit
5067-6615	1290 Infinity II Capillary Kit	1	Contain complete set of capillaries for system connections and performing system diagnostic tests, and Quick Connect and Quick Turn fittings for superior reliability and ease of use.	The kit contains 1x spare set of system capillaries (0.17x300 mm (5067-6129), 0.17x900 mm (5500-1217), 0.12x500 mm (5500-1157), PTFE tubing 0.7x500 mm (5062-2462), PEEK fittings 10/pk (5065-4426)), 1x Quick Connect Assembly (5067-5957) and 2x Quick Turn Fittings (5067-5966) including capillaries (0.12x120 mm (5500-1249), 0.12x280 mm (5500-1191)), blank nut (5067-6127), restriction capillary 0.12x200 mm (5022-2159), and union (5022-2184).	Starter Kit
G7116-60051	InfinityLab Quick Connect Heat Exchanger, High Flow (0.12 mm id, 3.0 µL Volume)	1	For high flow rate above ca. 2.5 mL/min.		Connection Supplies
5067-5963	InfinityLab Quick Connect Heat Exchanger, Low Dispersion Kit (0.075 mm id, 1.1 µL Volume, with Connecting Capillaries)	1	Reduce sample dispersion to improve sensitivity.		Connection Supplies

# 1260 Infinity II Prime LC Workflow Supplies Recommendations



InfinityLab Long-life HiS Deuterium Lamp



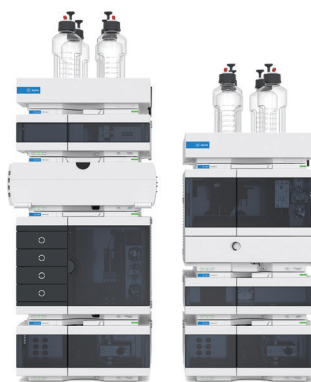
1260 Infinity II Prime LC Workflow

PN	Description	1st Purchasing Quantity Recommendation	Reasoning and Selling Points	Part List for Kit	Part Family
5190-0917	InfinityLab Long-life HiS Deuterium Lamp, with RFID Tag, for Diode Array Detector (G7117A/B/C)	1	Spare lamp for G7117A/B/C to avoid system downtimes if lamp is at the end of its life.		LC Lamps
G1314-60101	InfinityLab Long-life HiS Deuterium Lamp, with RFID Tag, for Variable Wavelength Detectors (G7114A/B)	1	Spare lamp for G7114A/B to avoid system downtimes if lamp is at the end of its life.		LC Lamps
G7104-68741	InfinityLab Preventive Maintenance Kit for Flexible Pump (G7104A)	1	Our study showed that conducting PM instead of replacing the parts when defect can reduce system downtime and troubleshooting leading to higher than 30% cost reduction.	The kit contains 2 pump seals (0905-1719), seal cap assembly (5067-5417), peristaltic pump (5065-4445), PTFE frits 5/pk (5023-0271), gold seal for outlet valve (G4220-20020) and 2 seal washes (0905-1175).	PM Kit
G7129-68740	InfinityLab Preventive Maintenance Kit Vial-sampler (G7129C)	1	Our study showed that conducting PM instead of replacing the parts when defect can reduce system downtime and troubleshooting leading to higher than 30% cost reduction.	The kit contains needle (G7129-87200), needle seat (G7129-87017), peristaltic pump (5065-4445), rotor seals 2/pk (0101-1416) and finger caps 15/pk (5063-6506).	PM Kit
G7167-68730	InfinityLab Preventive Maintenance Kit Multi-sampler (G7167A)	1	Our study showed that conducting PM instead of replacing the parts when defect can reduce system downtime and troubleshooting leading to higher than 30% cost reduction.	The kit contains needle (G4267-87201), needle seat (G4267-87012) and rotor seals 2/pk (5068-0209).	PM Kit

# 1260 Infinity II LC Workflow Supplies Recommendations



InfinityLab Starter Kit (Partial)



1260 Infinity II LC Workflow

PN	Description	1st Purchasing Quantity Recommendation	Reasoning and Selling Points	Part List for Kit	Part Family
2140-0820	InfinityLab Long-life Deuterium Lamp, with RFID Tag, for Diode Array and Multiple Wavelength Detectors (G7115A/G7165A)	1	Spare lamp for G7165A to avoid system downtimes if lamp is at the end of its life.		LC Lamps
G1314-60101	InfinityLab Long-life HIS Deuterium Lamp, with RFID Tag, for Variable Wavelength Detectors (G7114A/B)	1	Spare lamp for G7114A/B to avoid system downtimes if lamp is at the end of its life.		LC Lamps
5067-6617	1260 Infinity II Convenience Kit	1	Perfect starter kit for the 1260 Infinity II system, providing a carefully selected portfolio of InfinityLab supplies for efficient ramp up usage of new InfinityLab LC instruments.	The kit contains solvent bottles (3x clear (9301-6524), 1x amber (9301-6526)), Stay Safe Caps Starter Kit (5043-1222), pack of 500 vials clear with bonded pre-slit caps (5190-7023), 4 solvent inlet filters stainless steel (01018-60025), solvent inlet filter (01018-60025), inline filter kit (5067-6189), PTFE frits 5/pk (01018-22707), column holder clamp 2/pk (G7116-68004), column holder lamella 2/pk (G7116-68003) and complete contents of 1260 Infinity II capillary kit (5067-6614)	Starter Kit
5067-6614	1260 Infinity II Capillary Kit	1	Contain complete set of capillaries for system connections and performing system diagnostic tests, and Quick Connect and Quick Turn fittings for superior reliability and ease of use.	The kit contains 1x spare set of system capillaries (0.17x500 mm (5500-1246), 0.17x900 mm (5500-1217), 0.12x500 mm (5500-1157), PTFE tubing 0.7x500 mm (5062-2462), PEEK fittings 10/pk (5065-4426)), 1x Quick Connect Assembly (5500-1181) and 2x Quick Turn Fittings (5067-5966) including capillaries (0.17x120 mm (5500-1250), 0.12x280 mm (5500-1191)), blank nut (5043-0277), restriction capillary 0.12x200 mm (5022-2159), and union (5022-2184).	Starter Kit
G1310-68741	InfinityLab Preventive Maintenance Kit Isocratic and Quaternary Pump (G7110B, G7111A/B)	1	Our study showed that conducting PM instead of replacing the parts when defect can reduce system downtime and troubleshooting leading to higher than 30% cost reduction.	The kit contains plunger seal (5063-6589), 2 sets of seal cap assembly (5067-4728), 2 film washers (01018-07102), and PTFE Frits 5/pk (01018-22707)	PM Kit
G7129-68740	InfinityLab Preventive Maintenance Kit Vialsampler (G7129C)	1	Our study showed that conducting PM instead of replacing the parts when defect can reduce system downtime and troubleshooting leading to higher than 30% cost reduction.	The kit contains needle (G7129-87200), needle seat (G7129-87017), peristaltic pump (5065-4445), rotor seals 2/pk (0101-1416) and finger caps 15/pk (5063-6506).	PM Kit
G7167-68730	InfinityLab Preventive Maintenance Kit Multisampler (G7167A)	1	Our study showed that conducting PM instead of replacing the parts when defect can reduce system downtime and troubleshooting leading to higher than 30% cost reduction.	The kit contains needle (G4267-87201), needle seat (G4267-87012) and rotor seals 2/pk (5068-0209).	PM Kit
G7116-60061	InfinityLab Quick Connect Heat Exchanger, High Flow (0.17 mm id, 6.0 µL Volume)	1	For high flow rate above ca. 2.5 mL/min.		Connection Supplies



## 1220 Infinity II LC Workflow Supplies Recommendations



InfinityLab Long-life Deuterium Lamp



1220 Infinity II LC Workflow

PN	Description	1st Purchasing Quantity Recommendation	Reasoning and Selling Points	Part List for Kit	Part Family
2140-0820	InfinityLab Long-life Deuterium Lamp, with RFID Tag, for Diode Array and Multiple Wavelength Detector of 1220 Infinity II LC	1	Spare lamp for diode array detector to avoid system downtimes if lamp is at the end of its life.		LC Lamps
G1314-60101	InfinityLab Long-life HiS Deuterium Lamp, with RFID Tag, for Variable Wavelength Detector of 1220 Infinity II LC	1	Spare lamp for variable wavelength detector to avoid system downtimes if lamp is at the end of its life.		LC Lamps
G4280-68730	InfinityLab Preventive Maintenance Kit, for 1220 Infinity II system with Autosampler	1	Our study showed that conducting PM instead of replacing the parts when defect can reduce system downtime and troubleshooting leading to higher than 30% cost reduction.	The kit contains needle (G1313-87201), needle seat (G1329-87017), rotor seal (0100-1853), PTFE frits 5/pk (01018-22707), 2 sets of seal cap assembly (5067-4728) and plunger seals 2/pk (5063-6589).	PM Kit

Learn more:

<https://www.agilent.com/en/products/infinitylab/infinitylab>

This information is subject to change without notice.