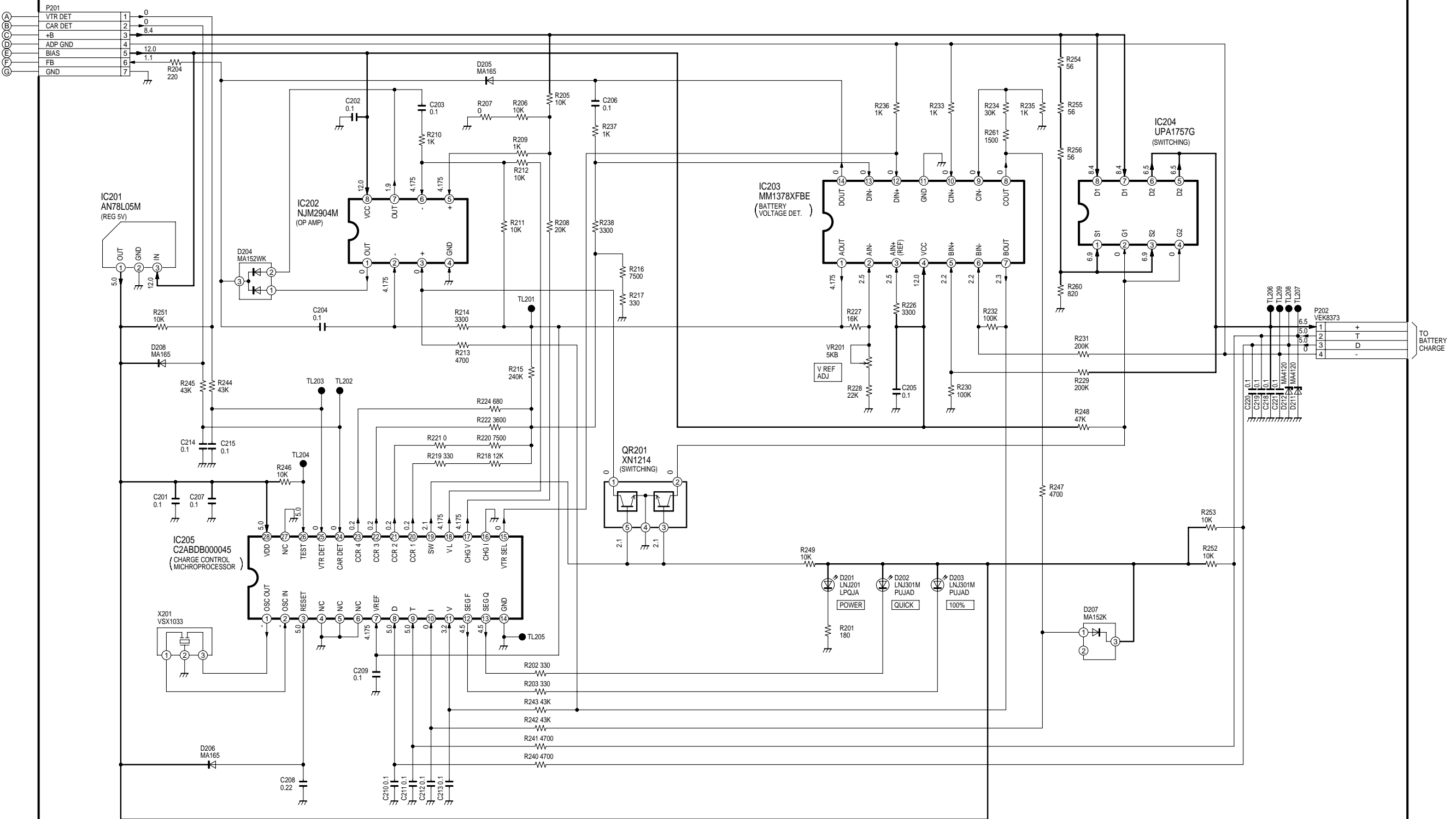


SUB C.B.A.(VEP60652A)



NOTE1:  
DO NOT USE ANY PART NUMBER SHOWN ON THIS SCHEMATIC DIAGRAM  
FOR ORDERING.WHEN YOU ORDER A PART,PLEASE REFER TO PARTS LIST.

NOTE2:  
WHEN MEASURE THE DC VOLTAGE AND WAVEFORM,CONNECT THE GND READ OR GND PROBE TO NEXT GND.  
PRIMARY SIDE.....IC01-3 PIN OF THE MAIN C.B.A.(PRIMARY GND)  
SECONDARY SIDE...P21-7 PIN OF THE MAIN C.B.A.(SECONDARY GND)

NOTE3:  
THE DC VOLTAGE INDICATED IN PRIMARY SIDE IS MEASURE WHEN INPUT AC 220V IS APPLIED.

NOTE4:  
WHEN MEASURE THE DC VOLTAGE,CONNECT THE MOVIE TO DC OUT(JK21)