

HISTORY INFORMATION FOR THE FOLLOWING MANUAL:

REPAIR MANUAL

ITC3 Chassis

Segment: ME



KDL-40R470B

<i>MODEL</i>	<i>COMMANDER</i>	<i>DESTINATION</i>
<i>KDL-32R420B</i>	<i>RM-YD092</i>	<i>US/CND</i>
<i>KDL-40R470B</i>	<i>RM-YD092</i>	<i>US/CND</i>

Version	Date	Subject
1.0	02/20/2014	Original Manual Release Date.

LCD Digital Color TV

SONY[®]

9-883-586-01

TABLE OF CONTENTS

Cautions and Warnings	ii	Section 4 - Exploded View/Part Number Information	17
Section 1 - Specifications and Layouts	1	Table Top Stand.....	17
Specifications	1	KDL-32R420B/40R470B	18
Checking the Accessories.....	1	Connectors	20
Board Layout	2	Screws.....	21
KDL-32R420B/40R470B.....	2	Section 5 - Accessories/Part Number Information	22
Wire Dressing	3	Accessories and Packaging	22
KDL-32R420B/40R470B.....	3	Miscellaneous.....	22
Section 2 - Troubleshooting	4	Optional Accessories	22
Diagnosing the Error	4	Remote Commander	22
Viewing the Self Check Diagnosis History.....	4	Appendix A: Encryption Key Components	A-1
Triage Chart.....	5		
Flowcharts and Diagrams.....	6		
Overall Block Diagram.....	6		
Power and Control Block Diagram.....	7		
KDL-32R420B.....	7		
KDL-40R470B.....	8		
No Power Flowchart	9		
Standby LED Blinking Flowchart	10		
Video Distortion Flowchart.....	11		
Section 3 - Repair Information	12		
Repairing the TV.....	12		
Removing the Table Top Stand.....	12		
Removing the Lower Cover	12		
Replacing the Main Board	13		
Removing the Speakers	16		
Replacing the Switch Unit	16		

CAUTIONS AND WARNINGS

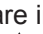
CAUTION!!

These servicing instructions are for use by qualified service personnel only. To reduce the risk of electric shock, do not perform any servicing other than that contained in the operating instructions unless you are qualified to do so.

WARNING!!

An isolation transformer should be used during any service to avoid possible shock hazard, in case of live chassis.

SAFETY-RELATED COMPONENT WARNING!!

There are critical components used in LCD color TVs that are important for safety. These components are identified with shading and  mark on the schematic diagrams and the parts list. It is essential that these critical parts be replaced only with the part number specified in the parts list to prevent electric shock, fire or other hazard.

NOTE: Do not modify the original design without obtaining written permission from the manufacturer or you will void the original parts and labor warranty.

ATTENTION!!

For safety reasons, component level repair of the Power Supply Boards and/or the Inverter Boards is prohibited.


ATTENTION!!

Ces instructions de service sont à l'usage du personnel de service qualifié seulement. Pour prévenir le risque de choc électrique, ne pas faire l'entretien autre que celui contenu dans le Mode d'emploi à moins que vous soyez qualifié faire ainsi.

ALERTE!!

Afin d'éviter tout risque d'électrocution provenant d'un châssis sous tension, un transformateur d'isolement doit être utilisé lors de tout dépannage.

ATTENTION AUX COMPOSANTS RELATIFS A LA SECURITE!!

Les composants identifiés par une trame et par une marque  sur les schémas de principe, les vues explosées et les listes de pièces sont d'une importance critique pour la sécurité du fonctionnement. Ne les remplacer que par des composants Sony dont le numéro de pièce est indiqué dans le présent manuel ou dans des suppléments publiés par Sony. Les réglages de circuit dont l'importance est critique pour la sécurité du fonctionnement sont identifiés dans le présent manuel. Suivre ces procédures lors de chaque remplacement de composants critiques, ou lorsqu'un mauvais fonctionnement suspecte.

ATTENTION!!

Pour des raisons de sécurité, Interdire de réparer ou remplacer les composants dans les blocs d'alimentation et/ou sur les modules d'inverseur.

CAUTIONS AND WARNINGS

SAFETY CHECK-OUT

After correcting the original service problem, perform the following safety checks before releasing the set to the customer:

1. Check the area of your repair for unsoldered or poorly soldered connections. Check the entire board surface for solder splashes and bridges.
2. Check the interboard wiring to ensure that no wires are “pinched” or touching high-wattage resistors.
3. Check that all control knobs, shields, covers, ground straps and mounting hardware have been replaced. Be absolutely certain that you have replaced all the insulators.
4. Look for unauthorized replacement parts, particularly transistors, that were installed during a previous repair. Point them out to the customer and recommend their replacement.
5. Look for parts which, though functioning, show obvious signs of deterioration. Point them out to the customer and recommend their replacement.
6. Check the line cords for cracks and abrasion. Recommend the replacement of any such line cord to the customer.
7. Check the antenna terminals, metal trim, “metallized” knobs, screws and all other exposed metal parts for AC leakage. Check leakage as described in “Leakage Test”.

LEAKAGE TEST

The AC leakage from any exposed metal part to earth ground and from all exposed metal parts to any exposed metal part having a return to chassis, must not exceed 0.5 mA (500 microamperes). Leakage current can be measured by any one of three methods.

1. A commercial leakage tester.
Follow the manufacturers' instructions provided with the tester.
2. A battery-operated AC milliammeter.

3. Measuring the voltage drop across a resistor by means of a VOM or battery-operated AC voltmeter. The “limit” indication is 0.75 V, so analog meters must have an accurate low voltage scale. Nearly all battery-operated digital multimeters that have a 2 VAC range are suitable. (see Figure A)

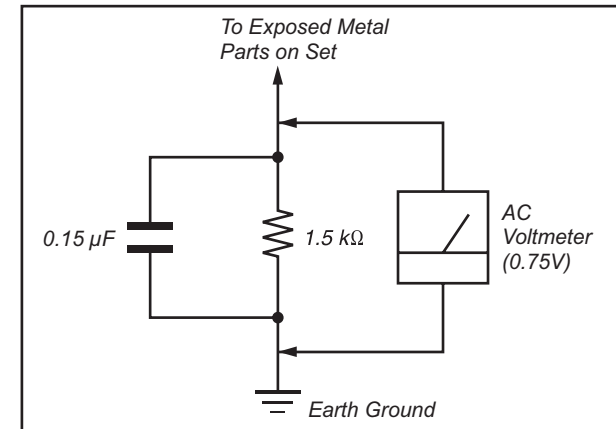


Figure A. Use an AC voltmeter to check AC leakage.

HOW TO FIND A GOOD EARTH GROUND

The cover-plate retaining screw on most AC outlet boxes is at earth ground. Verify the AC outlet box retaining screw ground by connecting a 60W to 100W incandescent (not a neon or fluorescent lamp) between the hot side of the receptacle and the retaining screw. Try both slots, if necessary, to locate the hot side on the line; the lamp should light at normal brilliance if the screw is at ground potential. (see Figure B)

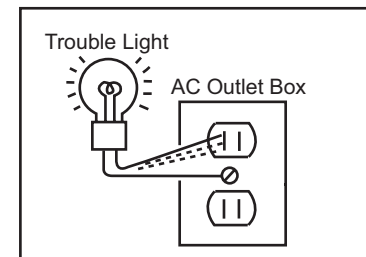



Figure B. Checking for earth ground.

SECTION 1 - SPECIFICATIONS AND LAYOUTS

SPECIFICATIONS

System	
Television system	NTSC: American TV Standard ATSC (8VSB terrestrial): ATSC Compliant 8VSB QAM on cable: ANSI/SCTE 07 2000 (Does not include CableCARD functionality)
Channel coverage	Analog Terrestrial: 2 - 69 / Digital Terrestrial: 2 - 69 Analog Cable: 1 - 135 / Digital Cable: 1 - 135
Panel system	LCD (Liquid Crystal Display) Panel, LED Backlight
Speaker output	5 W + 5 W (KDL-32R420B), 8 W + 8 W (KDL-40R470B)
Input/Output jacks	
CABLE/ANTENNA	75-ohm external terminal for RF inputs
VIDEO IN	Y: 1.0 Vp-p, 75 ohms unbalanced, sync negative Ps: 0.7 Vp-p, 75 ohms / Pcr: 0.7 Vp-p, 75 ohms
COMPONENT IN	Supported formats: 1080p (60 Hz), 1080i (60 Hz), 720p (60 Hz), 480p, 480i Audio Input (phono jacks)
VIDEO IN	Video Input (phono jacks)
HDMI IN 1/MHL	HDMI Video: 1080/24p, 1080p (30, 60 Hz), 1080i (60 Hz), 720p (30, 60 Hz), 720/24p, 480p, 480i
HDMI IN 2 (ARC)	MHL Video: 1080/24p, 1080p (30 Hz), 1080i (60 Hz), 720p (30, 60 Hz), 720/24p, 480p, 480i, PC input
For KDL-40R470B	640 x 480, 31.5 kHz, 60 Hz, 800 x 600, 37.9 kHz, 60 Hz, 1,024 x 768, 48.4 kHz, 60 Hz, 1,280 x 768, 47.4 kHz, 60 Hz, 1,280 x 768, 47.8 kHz, 60 Hz, 1,360 x 768, 47.7 kHz, 60 Hz 1,280 x 1024, 64.0 kHz, 60 Hz, *1,920 x 1080, 67.5 kHz, 60 Hz
For KDL-32R420B	640 x 480, 31.5 kHz, 60 Hz, 800 x 600, 37.9 kHz, 60 Hz, 1,024 x 768, 48.4 kHz, 60 Hz, 1,280 x 768, 47.4 kHz, 60 Hz, 1,280 x 768, 47.8 kHz, 60 Hz, 1,360 x 768, 47.7 kHz, 60 Hz
AUDIO	Two channel linear PCM 32, 44.1 and 48 kHz, 16, 20 and 24bits, Dolby Digital
AUDIO OUT (Headphone)	Audio output, Headphone (minijack), Subwoofer
 DC IN 19.5 V	AC adapter input

* The 1080p timing when applied to the HDMI input will be treated as a video timing and not PC timing

Model name	KDL-40R470B	KDL-32R420B
Power and others		
Power requirement	19.5 V DC with AC adapter, Rating: Input 110-240 V AC, 50/60 Hz (U.S.A./Canada 120 V AC, 60 Hz)	
Power consumption	in use	75 W
	in standby	45 W
	Less than 0.4 W with 120 V AC and less than 0.5 W with 240 V AC	
Screen size* (measured diagonally) (inches)	40	31.5 (32 Class)
Display resolution	1,920 dots (horizontal) × 1,080 lines (vertical)	1,366 dots (horizontal) × 768 lines (vertical)
Dimensions* with stand (mm) (inches)	926 × 584 × 175 36 1/2 × 23 × 7	736 × 473 × 144 29 × 18 7/8 × 5 3/4
	without stand (mm) (inches)	926 × 556 × 89 36 1/2 × 22 × 3 5/8
wall-mount hole pattern (mm)	200 x 100	100 x 100
wall-mount screw size (mm)	M6 (8~12 mm)	
Mass* with stand (kg) (lb)	7,4 16,3	4,9 10,8
	without stand (kg) (lb)	7,0 15,4
Others		
Optional accessories	MHL Cable: DLC-MB10/DLC-MB20/DLC-MC20	
Operating temperature	32 °F – 104 °F (0 °C – 40 °C)	

* Dimensions and mass are approximate values.

- Optional accessories availability depends on its stock.
- Design and specifications are subject to change without notice.
- This TV set incorporates MHL 2.

CHECKING THE ACCESSORIES

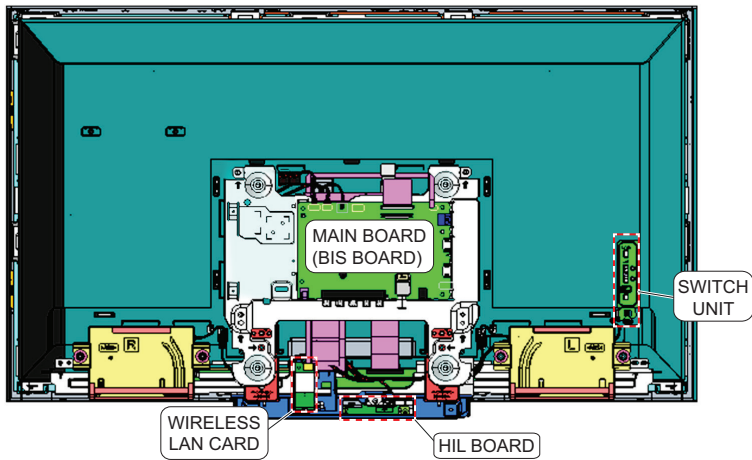
- Remote Control (1)*
- Size AAA Batteries (2)
- AC Adapter
- Fixing screws for Table-Top Stand (M5 × 20) (2)
- Cable holder (3)
- Operating Instructions (1)
- Quick Setup Guide (1)
- Safety Regulatory Booklet (1)
- Software License (1)
- Stand Installation Guide (1)

* Please refer to the model name printed on the remote control.

SECTION 1 - SPECIFICATIONS AND LAYOUTS

BOARD LAYOUT

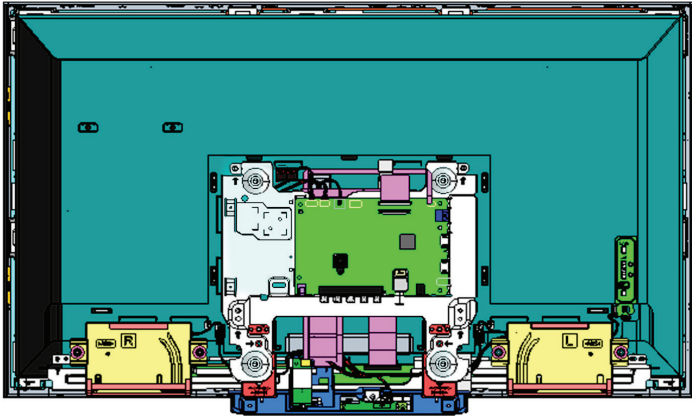
KDL-32R420B/40R470B



SECTION 1 - SPECIFICATIONS AND LAYOUTS

WIRE DRESSING

KDL-32R420B/40R470B



SECTION 2 - TROUBLESHOOTING



DIAGNOSING THE ERROR

Before servicing the Television:

- 1. Verify the TV has the symptom the customer indicated.
- 2. Check to see if the latest Software is installed.
 - a. If not, install the latest version.
- 3. Determine the replacement part required.

VIEWING THE SELF CHECK DIAGNOSIS HISTORY

When an error is detected, the Self Check screen records the number of times the error occurred. This is helpful in confirming past occurrences of an error and for determining if an error is intermittent when the customer is not sure what is causing the television to shut down. If the screen displays a “0”, no error has occurred.

- 1. Press **POWER** to turn on the TV and then turn it off again.
- 2. Press the following buttons on the **Remote Commander** within 1 second of each other:



NOTE: This differs from accessing Service Adjustments Mode (Volume +).

SELF CHECK

Back

002	MAIN_POWER	001
003	DC_ALERT1	000
003	AUDIO_PROT	000
004	BALANCER_ERR	000
005	TCON_ERR	000
005	PANEL_ID_NVM_ERR	000
006	BACKLIT	000
007	TEMP_ERR	000

001160002400115

[Home] Exit

Indicates an error has occurred

Indicates no error has occurred

SAMPLE SELF CHECK DIAGNOSIS PAGE

SECTION 2 - TROUBLESHOOTING

TRIAGE CHART

Use this general Triage Chart to determine what may possibly be causing the error before going out to the customers location.

1. Confirm the symptom from the customer.
2. Select that symptom from the chart.
3. Bring the primary component listed for that symptom.
4. Follow the associated flowcharts in the Training Manual to isolate the board.
5. Chart Color Code.

Red Dot: (Primary) Most likely defective part.
Blue Triangle: (Secondary) Possible defective part.

Board Reference	Symptoms - Shutdown. Power LED blinking red diagnostics sequences					User Interface NG	No Picture (UI OK)							Audio							
	2X	3X	4X	5X	6X		Tuner	USB	Video	Component	HDMI	MHL	SCART	Main Speaker	HP	Video	Component	Tuner	HDMI	SCART	USB
MAIN BOARD	●	●	●	▲	●	●	●	●	●	●	●	●	●	●	●	●	●	●	●	●	●
LIGHT SOURCE BOARD					●	▲															
OPEN CELL				●		▲															
AC ADAPTOR	●																				
SPEAKERS		▲											●		●	●	●	●	●	●	●
LS HARNESS					▲																
MAIN HARNESS																					
SPEAKER HARNESS		▲											▲		▲	▲	▲	▲	▲	▲	▲
FFC CABLE				▲		▲															

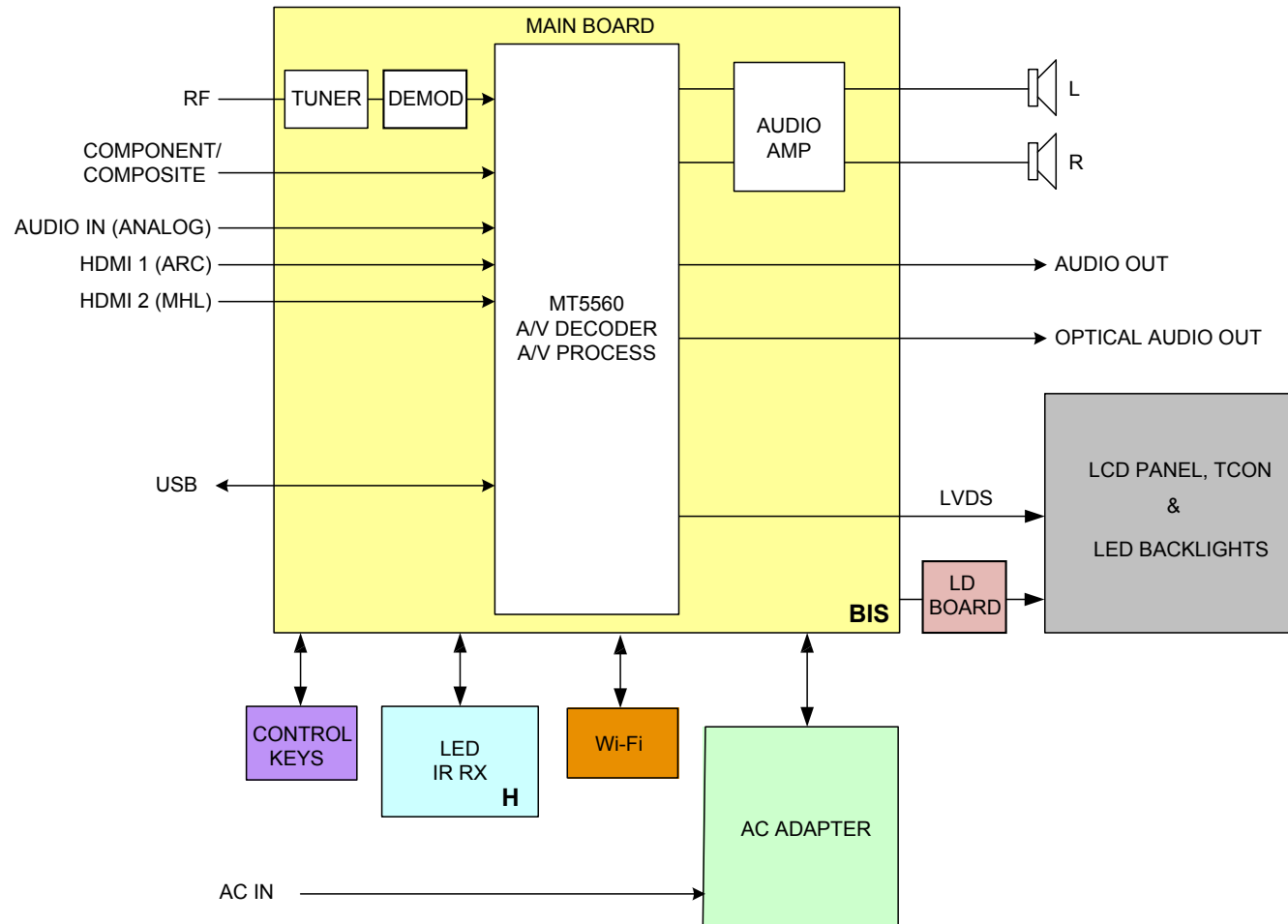
***NOTE:** REFER TO LCD PANEL SERVICE MANUAL IN REFERENCE LIBRARY DATABASE
 FOR CORRECT REPLACEMENT PARTS BASED ON SERIAL NUMBER.

To access the most recent version of the Triage documents for the models listed in this manual, login into the Sony Authorized Service Portal at <http://www.sony.com/asp>.

SECTION 2 - TROUBLESHOOTING

FLOWCHARTS AND DIAGRAMS

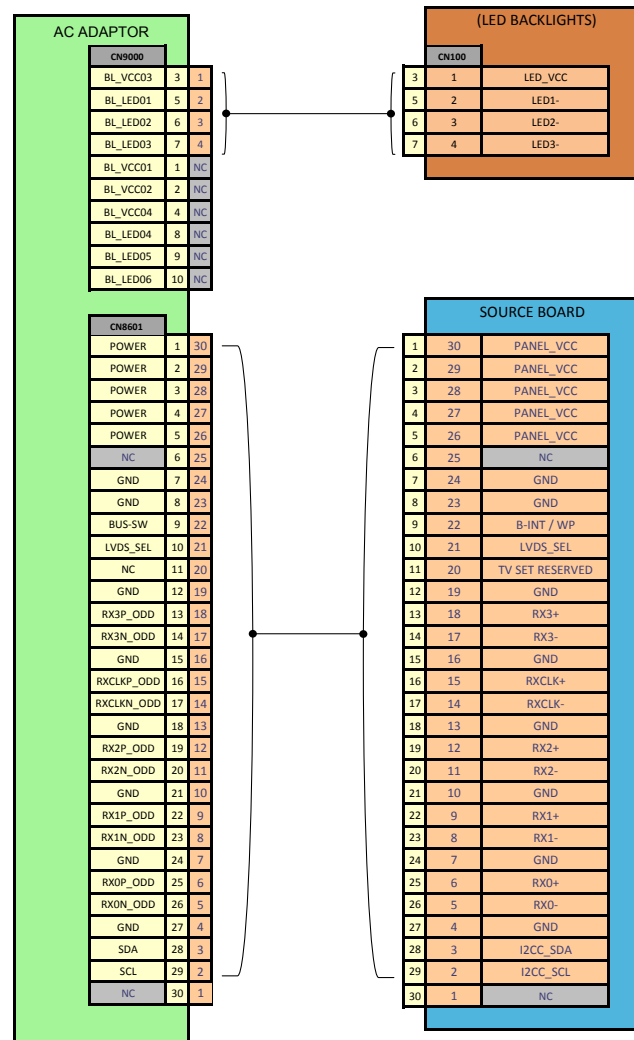
OVERALL BLOCK DIAGRAM



SECTION 2 - TROUBLESHOOTING

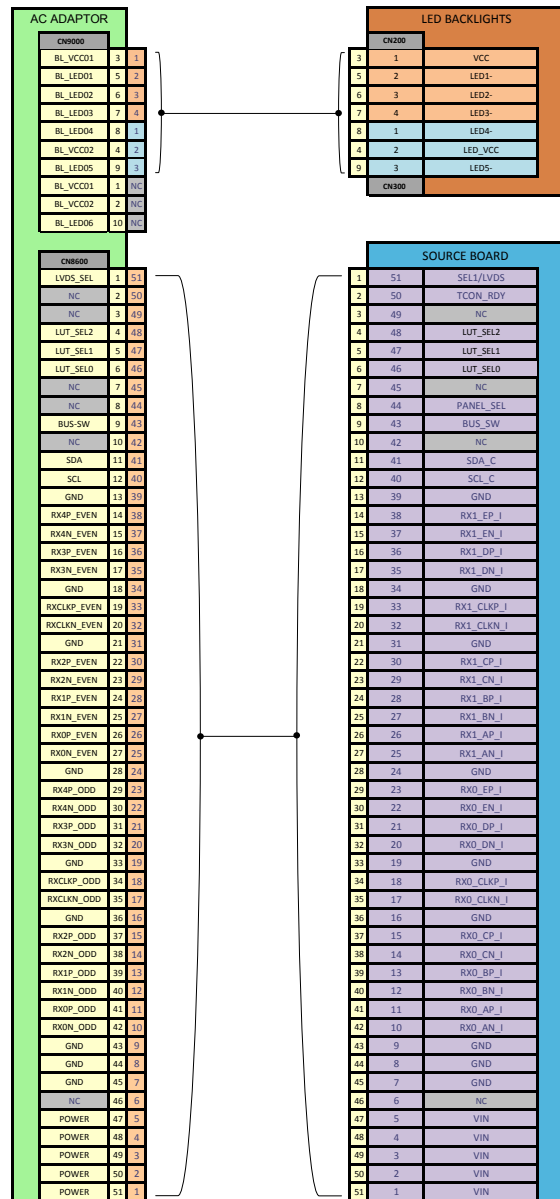
POWER AND CONTROL BLOCK DIAGRAM

KDL-32R420B



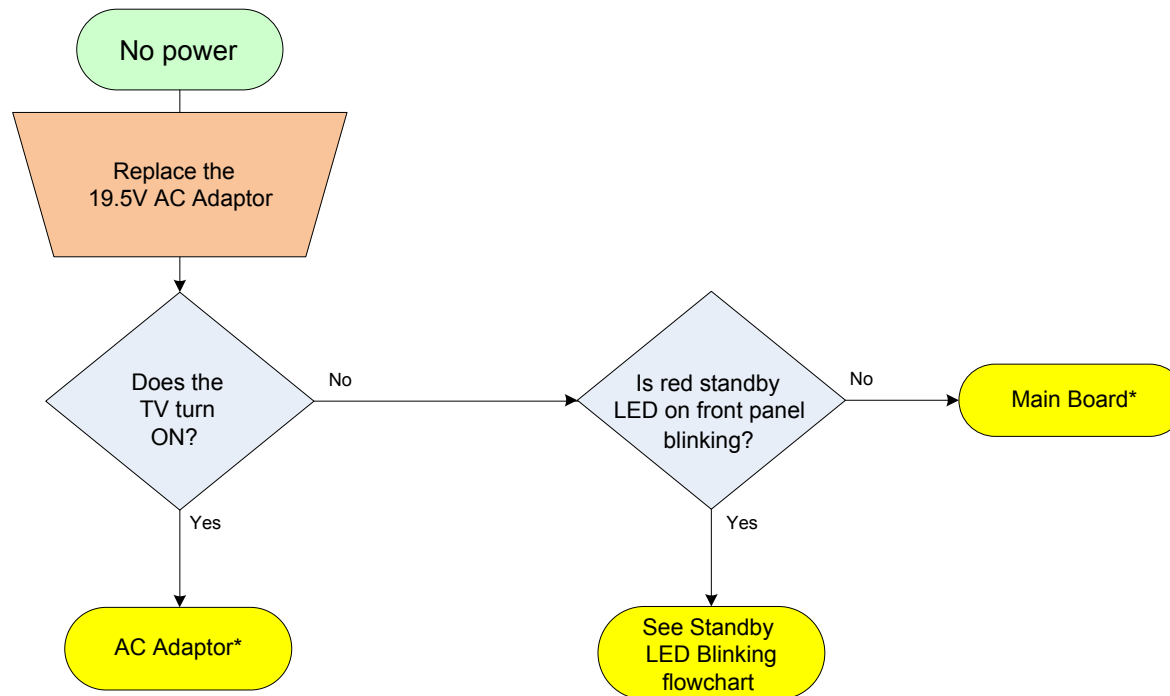
SECTION 2 - TROUBLESHOOTING

KDL-40R470B



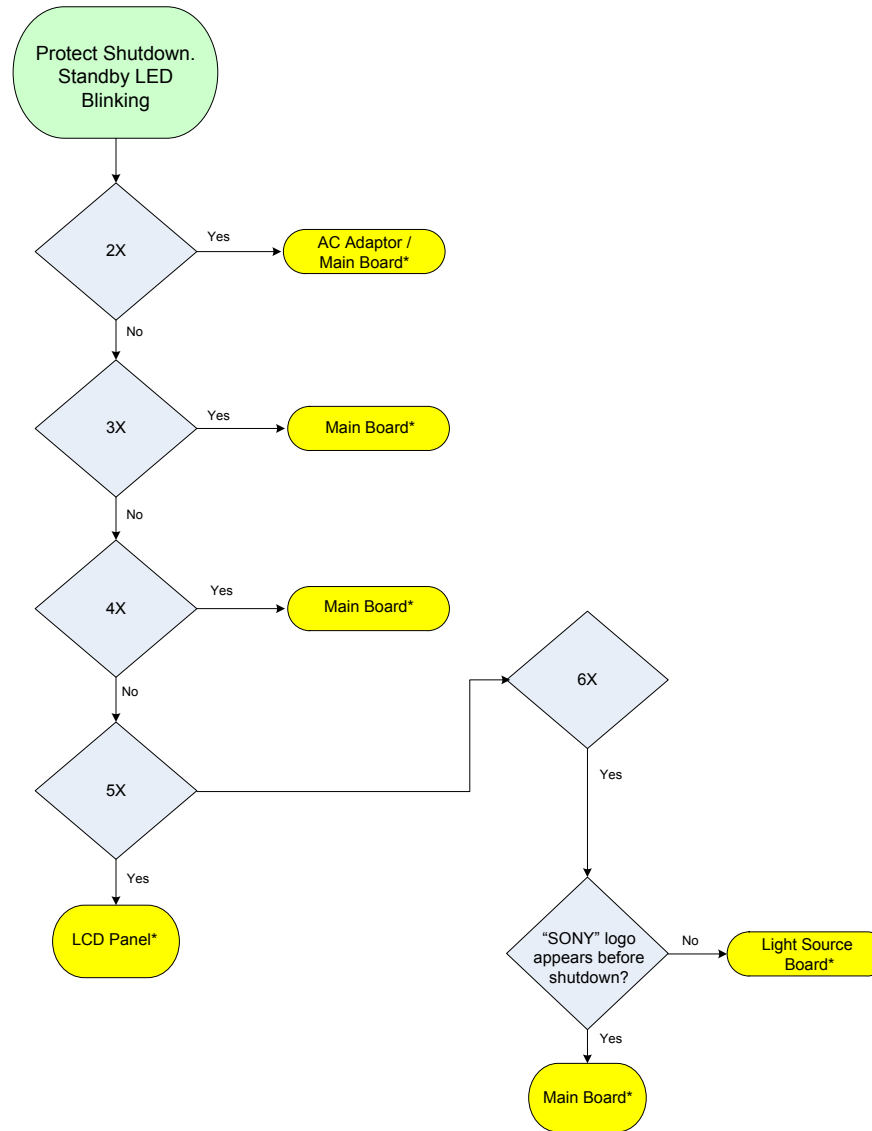
SECTION 2 - TROUBLESHOOTING

NO POWER FLOWCHART



*For Part Number information, refer to ["Section 4 - Exploded View/Part Number Information" on page 17](#).

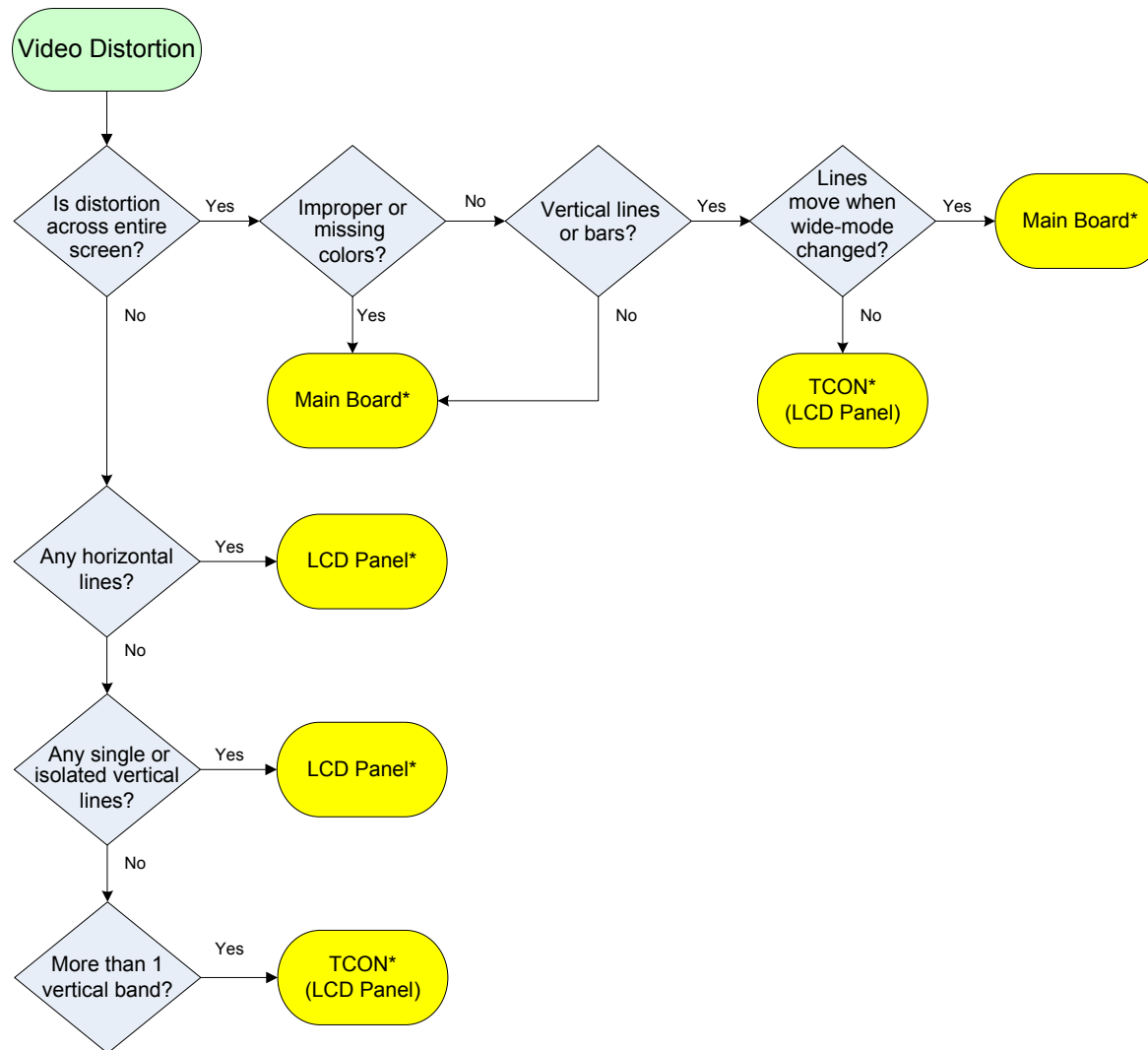
STANDBY LED BLINKING FLOWCHART



*For Part Number information, refer to [“Section 4 - Exploded View/Part Number Information” on page 17.](#)

SECTION 2 - TROUBLESHOOTING

VIDEO DISTORTION FLOWCHART



*For Part Number information, refer to ["Section 4 - Exploded View/Part Number Information" on page 17](#).

SECTION 3 - REPAIR INFORMATION

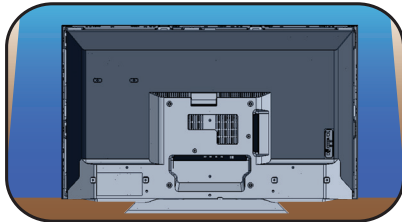
REPAIRING THE TV

If the latest Software does not correct the issue, complete the following:

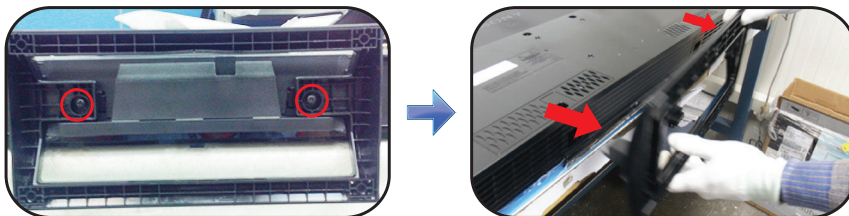
1. Verify the television has the symptom the customer indicated.
2. Replace part causing the symptom.
3. Install the latest version of Software (Required for ALL repairs).
4. Perform the required service adjustments and checks.
5. Verify the repair resolved the issue.

REMOVING THE TABLE TOP STAND

1. Place TV face down on a flat and steady surface.

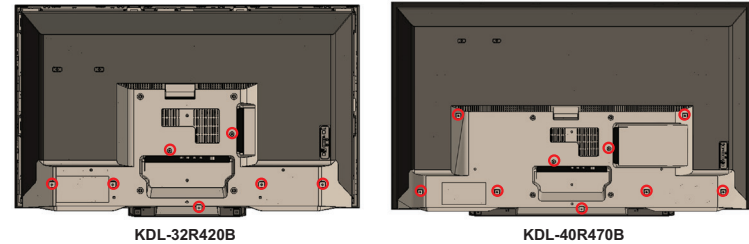


2. Remove all screws and grasp as shown to detach the Table Top Stand.

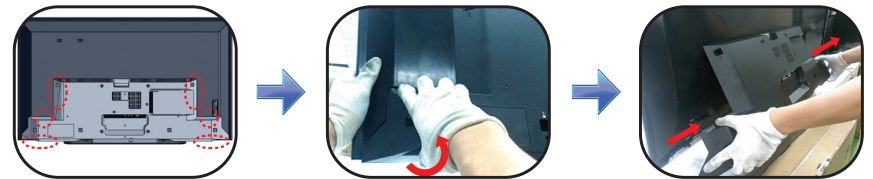


REMOVING THE LOWER COVER

1. Locate and remove all screws from the Lower Cover.



2. Locate the areas shown in the illustration and detach the Lower Cover from the TV.

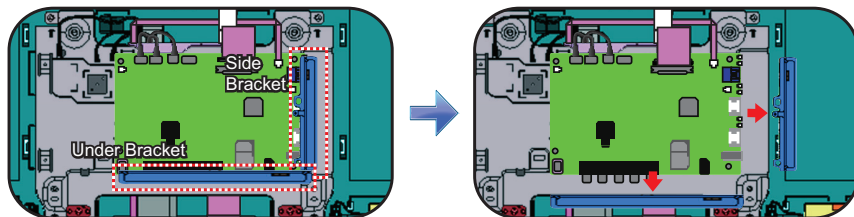


SECTION 3 - REPAIR INFORMATION

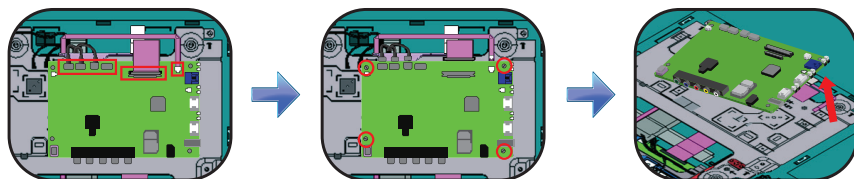
REPLACING THE MAIN BOARD

The Main Board used in these models is available for repair. For Part Number information refer to [Section 4 - Exploded View/Part Number Information on page 17](#).

1. Slide the Side Bracket and Under Bracket to detach from Main Board.



2. Locate and disconnect the connectors. Then remove all screws from the Main Board and lift to detach.



3. Install the new Main Board, connectors and screws.
4. Update the Software.

After ALL repairs **UPDATE** the SOFTWARE to the latest version. Instructions are included with the Software package on the [Sony Authorized Service Portal](#) website.

- a. Insert the USB device with the latest Software into one of the TVs' USB ports.
- b. Connect TV to AC power.
- c. Wait at least 20 seconds.
- d. Press **POWER** on the remote to turn ON the TV.
- e. Wait until the Software update is completed.

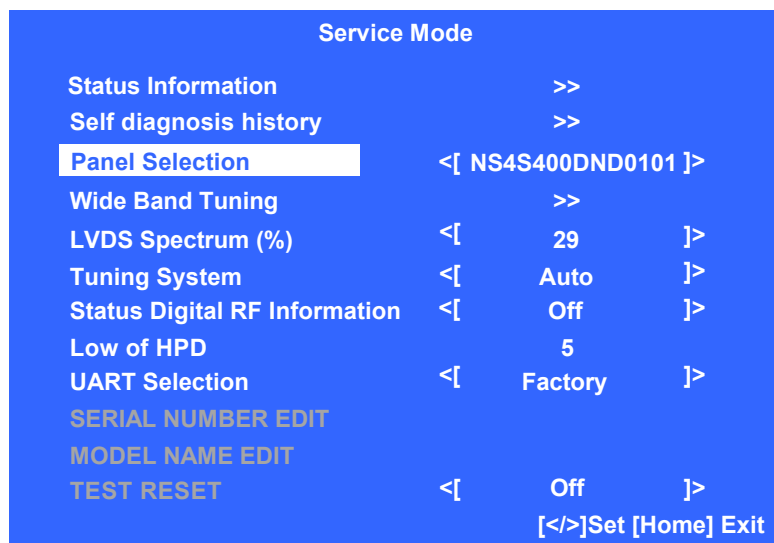
5. To access **Service Mode**, turn TV ON and OFF again then press the following buttons within 1 second of each other:



Info **i+** → Channel **5** → Volume **+** → **POWER**

Service Mode		
Status Information	>>	
Self diagnosis history	>>	
Panel Selection	<[NS4S400DND0101]>	
Wide Band Tuning	>>	
LVDS Spectrum (%)	<[29]>
Tuning System	<[Auto]>
Status Digital RF Information	<[Off]>
Low of HPD	5	
UART Selection	<[Factory]>
SERIAL NUMBER EDIT		
MODEL NAME EDIT		
TEST RESET	<[Off]>
[</>]Set [Home] Exit		

SECTION 3 - REPAIR INFORMATION

6. Press  until **Panel Selection** is selected.

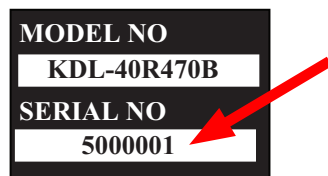


7. Press  or  to select the correct Panel Code for the TV model.
(Use the table below for reference).

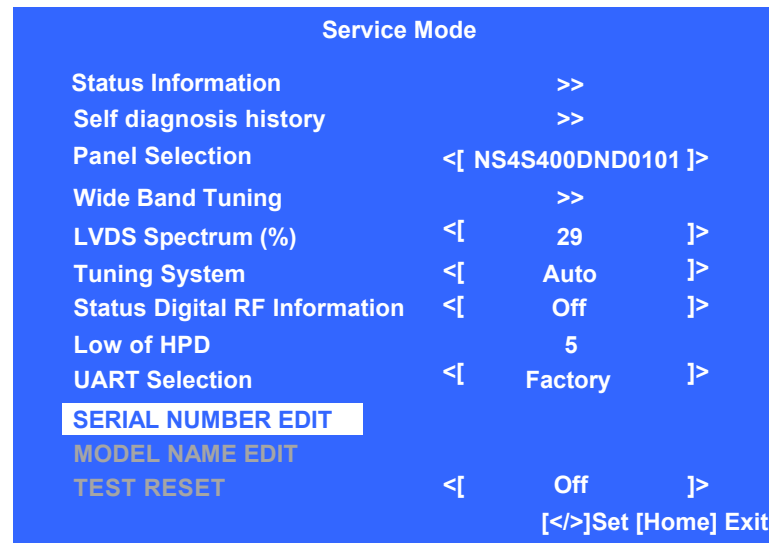
Model Name	Panel Code
KDL-32R420B	IS4S320DNG0101
KDL-40R470B	NS4S400DND0101

CAUTION: Select **ONLY** the correct Panel Code.

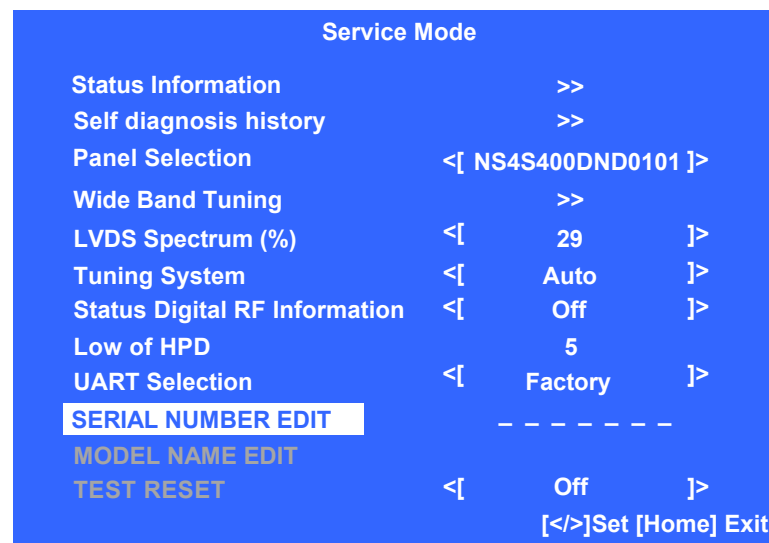
8. Locate the Serial Number for the TV on the side of the Rear Cover.






9. Press  until **SERIAL NUMBER EDIT** is selected.

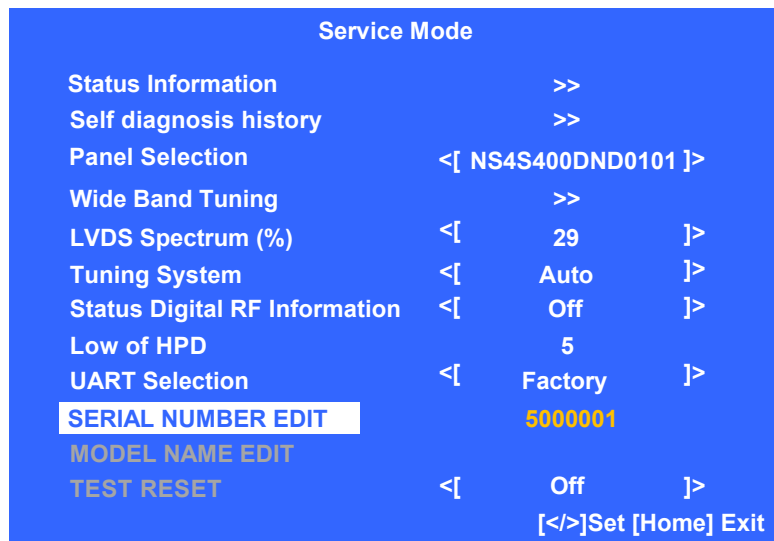


10. Press  to be able to select the first digit.






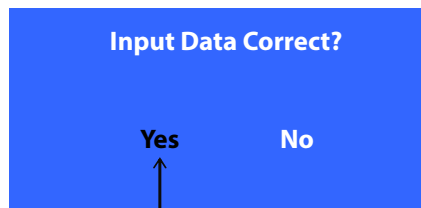
SECTION 3 - REPAIR INFORMATION

11. Press  or  to select numbers and then  to move to the next digit until Serial Number is complete.



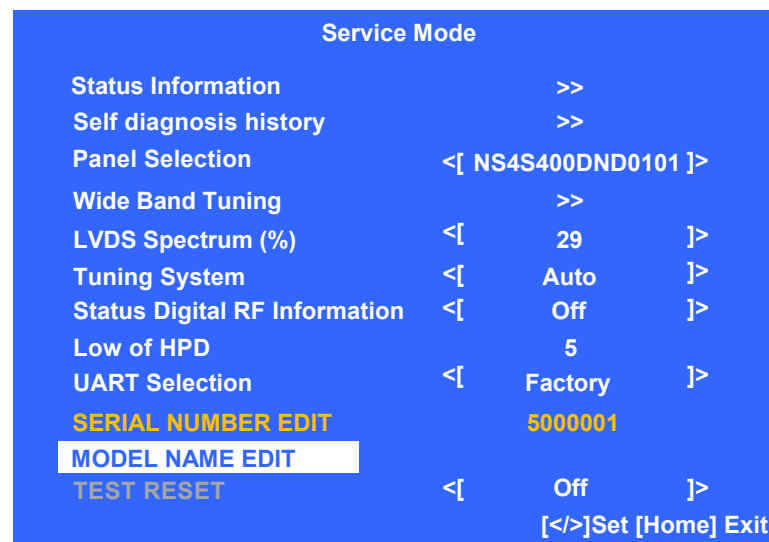
CAUTION: The Serial Number can only be selected once. Be sure to verify the information is correct before saving the changes.

12. When the complete Serial Number displays, press .
13. On the confirmation screen, press  to select **YES** and then .

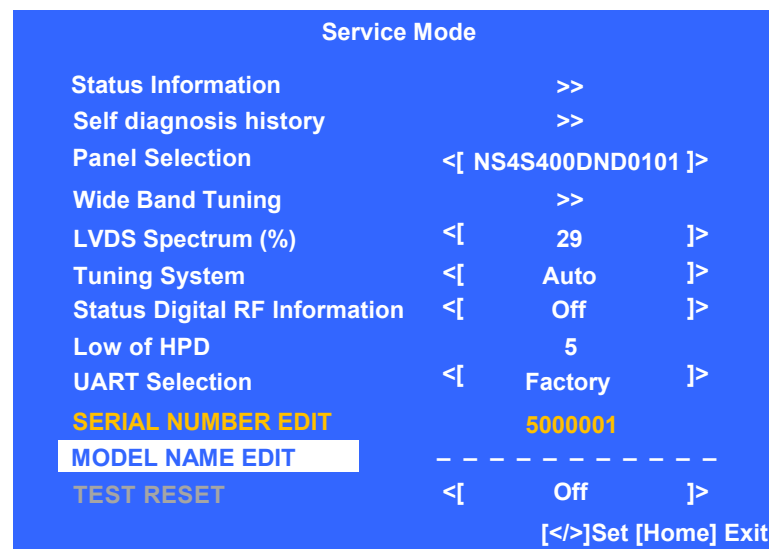


Selected text displays in black




14. Press  until **MODEL NAME EDIT** is selected.



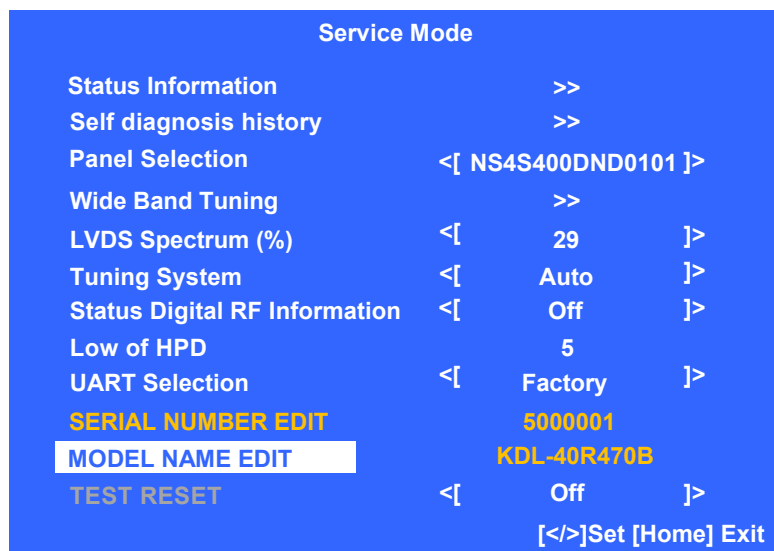
15. Press  to be able to select the first character.






SECTION 3 - REPAIR INFORMATION

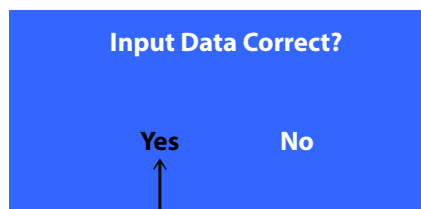
16. Press  or  to select characters and then  to move to the next space until Model Name is complete.

NOTE: Make sure to include dash in Model Name.



CAUTION: The Model Name can only be selected once. Be sure to verify the information is correct before saving the changes.

17. When the complete Model Name displays, press .
18. On the confirmation screen, press  to select **YES** and then .

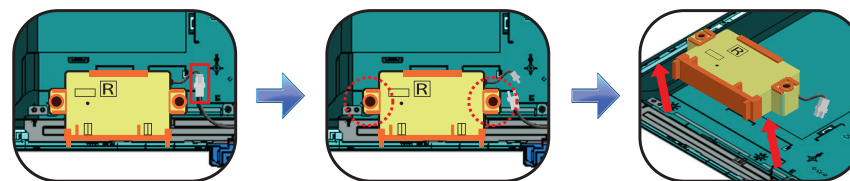


Selected text displays in black

19. Press  to exit **Service Mode**.

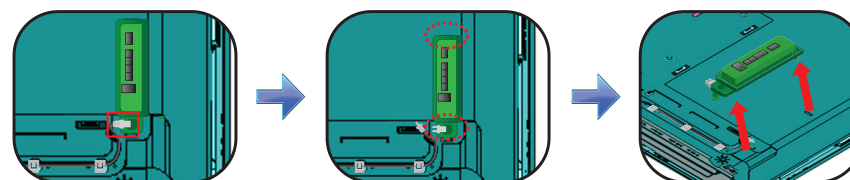
REMOVING THE SPEAKERS

1. Disconnect the connector from Speakers and lift as shown to detach.



REPLACING THE SWITCH UNIT

1. Disconnect the connector from the Switch Unit and lift as shown to remove.



2. Install the new Switch Unit and its connector.


SECTION 4 - EXPLODED VIEW/PART NUMBER INFORMATION

TABLE TOP STAND

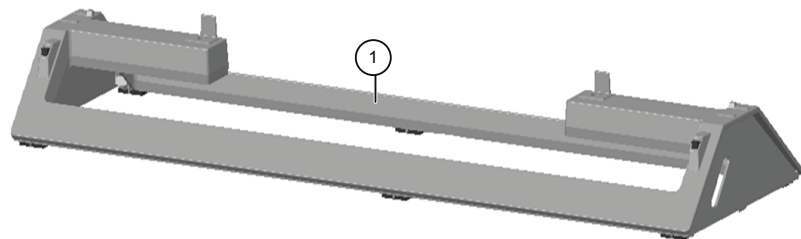
Components not identified by a part number or description are not stocked because they are seldom required for routine service.

NOTE: The components identified by shading and a  mark are critical for safety. Replace only with part number specified.

The component parts of an assembly are indicated by the reference numbers in the far right column of the parts list and within the dotted lines of the diagram.


NOTE: The components identified by a red outline and a  mark contain confidential information. Specific instructions must be adhered to whenever these components are repaired and/or replaced. (See Appendix A)


REF. NO.	PART NO.	DESCRIPTION
1	4-532-674-01	STAND BASE (S) (KDL-32R420B ONLY)
1	4-532-675-01	STAND BASE (M) (KDL-40R470B ONLY)

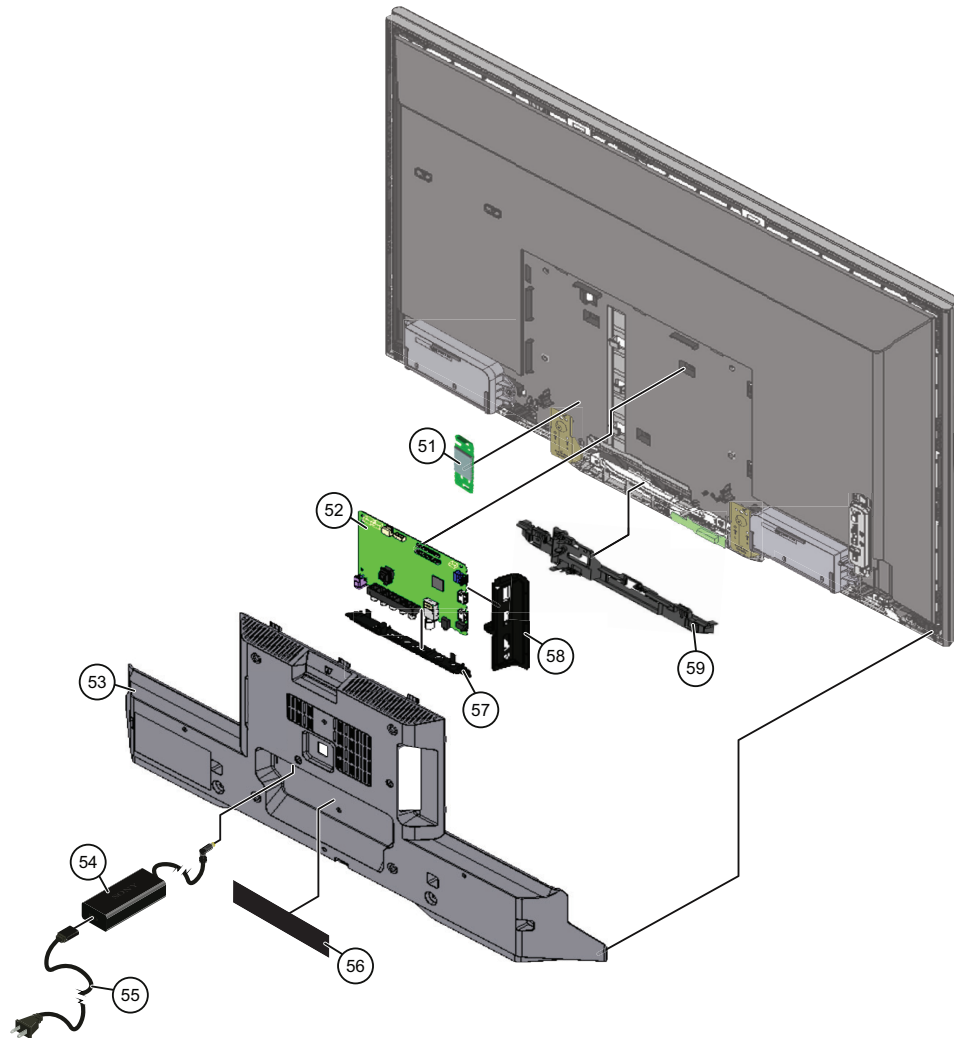





SECTION 4 - EXPLODED VIEW/PART NUMBER INFORMATION

KDL-32R420B/40R470B

NOTE: The components identified by shading and  mark are critical for safety. Replace only with part number specified.


NOTE: The components identified by a red outline and a  mark contain confidential information. Specific instructions must be adhered to whenever these components are repaired and/or replaced. (See Appendix A)




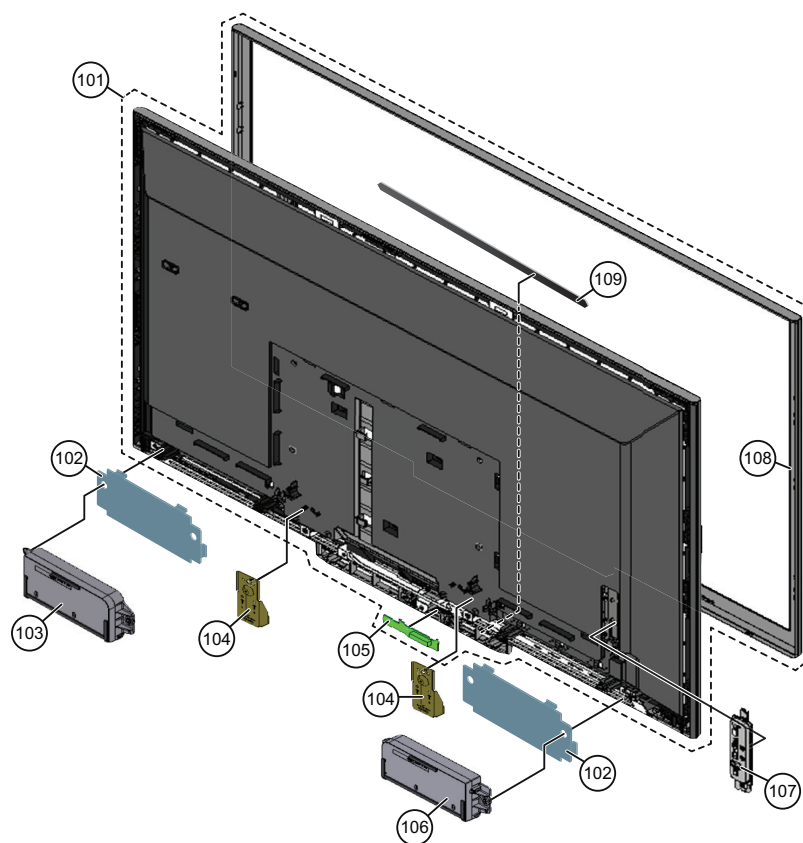
REF. NO.	PART NO.	DESCRIPTION
51	1-458-751-11	WIRELESS LAN CARD
 52	A-1989-285-A	BIS BOARD, COMPLETE (KDL-32R420B ONLY) AFTER REPLACING THE MAIN BOARD, YOU MUST UPDATE THE SOFTWARE TO THE LATEST VERSION.
 52	A-1989-295-A	BIS BOARD, COMPLETE (KDL-40R470B ONLY) AFTER REPLACING THE MAIN BOARD, YOU MUST UPDATE THE SOFTWARE TO THE LATEST VERSION.
53	4-532-661-21	LOWER COVER (32) (KDL-32R420B ONLY)
53	4-532-036-21	LOWER COVER (40) (KDL-40R470B ONLY)
54	1-492-511-21	AC ADAPTOR (60W) (KDL-32R420B ONLY)
54	1-492-734-11	AC ADAPTOR (85W) (KDL-40R470B ONLY)
 55	1-838-955-41	POWER SUPPLY CORD
56	4-527-882-01	LABEL, UNDER TERMINAL ORDER THIS PART WHEN REPLACING THE LOWER COVER.
57	4-528-971-21	BRACKET, UNDER
58	4-528-970-01	BRACKET, SIDE
59	4-476-161-01	COVER, OP (M) (KDL-32R420B ONLY)
59	4-476-160-01	COVER, OP (L) (KDL-40R470B ONLY)

SECTION 4 - EXPLODED VIEW/PART NUMBER INFORMATION

KDL-32R420B/40R470B

NOTE: The components identified by shading and  mark are critical for safety. Replace only with part number specified.


NOTE: The components identified by a red outline and a  mark contain confidential information. Specific instructions must be adhered to whenever these components are repaired and/or replaced. (See Appendix A)




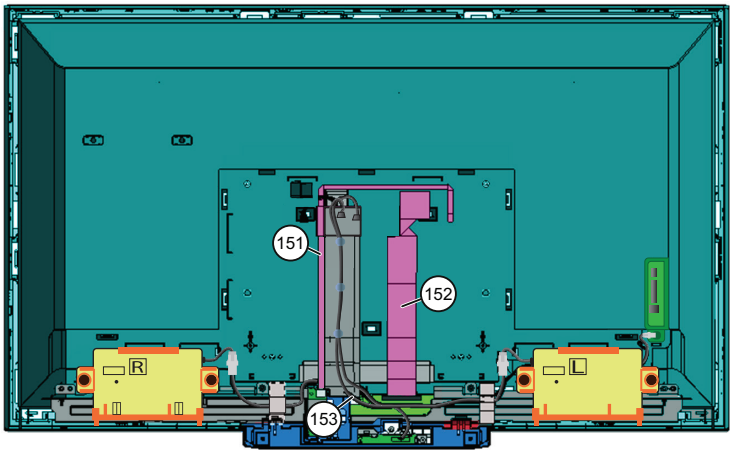
REF. NO.	PART NO.	DESCRIPTION	[ASSEMBLY INCLUDES]
101	NA	PANEL MODULE FOR ALL LCD PANEL AND TCON BOARD PART NUMBER INFORMATION REFER TO THE LCD PANELS SERVICE MANUAL.	[105,108,109]
102	4-476-162-01	BRACKET, SP (KDL-40R470B ONLY)	
103	1-858-991-21	SPEAKER BOX (RIGHT) (KDL-32R420B ONLY)	
103	1-858-963-21	SPEAKER BOX (RIGHT) (KDL-40R470B ONLY)	
104	4-476-164-01	STAND BRACKET	
105	A-1979-259-A	HIL BOARD, MOUNTED	
106	1-858-991-11	SPEAKER BOX (LEFT) (KDL-32R420B ONLY)	
106	1-858-963-11	SPEAKER BOX (LEFT) (KDL-40R470B ONLY)	
107	1-492-517-11	SWITCH UNIT	
108	4-527-492-01	BEZEL (32) (KDL-32R420B ONLY)	
108	4-527-492-01	BEZEL (40) (KDL-40R470B ONLY)	
109	4-476-158-01	PANEL, ORNAMENTAL (32) (KDL-32R420B ONLY)	
109	4-476-157-01	PANEL, ORNAMENTAL (40) (KDL-40R470B ONLY)	

SECTION 4 - EXPLODED VIEW/PART NUMBER INFORMATION

CONNECTORS

NOTE: The components identified by shading and  mark are critical for safety. Replace only with part number specified.


NOTE: The components identified by a red outline and a  mark contain confidential information. Specific instructions must be adhered to whenever these components are repaired and/or replaced. (See Appendix A)







REF. NO.	PART NO.	DESCRIPTION
151	1-848-372-11	FLEXIBLE FLAT CABLE 5P
152	1-848-206-11	(LVDS) FLEXIBLE FLAT CABLE 30P (KDL-32R420B ONLY)
152	1-848-200-11	(LVDS) FLEXIBLE FLAT CABLE 51P (KDL-40R470B ONLY)
153	1-910-804-34	HARNESS ASSEMBLY (KDL-32R420B ONLY)
153	1-910-804-36	HARNESS ASSEMBLY (KDL-40R470B ONLY)

SECTION 4 - EXPLODED VIEW/PART NUMBER INFORMATION

SCREWS

NOTE: The components identified by shading and  mark are critical for safety. Replace only with part number specified.

NOTE: The components identified by a red outline and a  mark contain confidential information. Specific instructions must be adhered to whenever these components are repaired and/or replaced. (See Appendix A)

P/N	DESCRIPTION	KDL-32R420B	KDL-40R470B
 7-685-647-79	SCREW, +BVTP 3X10 TYPE IT-3	Wireless Lan Card (1), Rear Cover (7), OP Cover (2), Stand Brackets (2), Main Board Plate (2)	Rear Cover (9), Wireless Lan Card (1), OP Cover (3), Stand Brackets (2), Main Board Plate (4)
NA 7-685-645-79	SCREW +BVTP 3X6 TYPE2 IT-3	Main Board Plate (2)	Stand Brackets (2), Main Board Plate (2)
NA 3-452-815-21	SCREW, +PSW M5X20	Stand to TV (2)	Stand to TV (2)
 4-159-298-21	SCREW, + PSW M4X10	Stand Brackets (2) Main Board Plate (2)	Stand Brackets (2)
 2-990-421-41	SCREW (+PSW) (M3X6)	Main Board (4)	Main Board (4)

SECTION 5 - ACCESSORIES/PART NUMBER INFORMATION

ACCESSORIES AND PACKAGING

PART NO.	DESCRIPTION
3-452-815-21	SCREW, +PSW M5X20 (SCREWS TO ATTACH TABLE TOP STAND TO LCD TV) <i>For product protection and safety reasons, Sony strongly recommends that you use the screws provided with the TV.</i> <i>CAUTION: These screws cannot be used to secure the TV to the Wall Mount Brackets.</i>
3-299-071-08	FLYER, SAFETY
4-528-762-11	MANUAL, INSTRUCTION

MISCELLANEOUS

PART NO.	DESCRIPTION
4-428-537-11	CLAMPER, AC ADAPTER (KDL-32R420B ONLY)
4-428-537-01	CLAMPER, AC ADAPTER (KDL-40R470B ONLY)
4-463-331-01	SHEET RADIATION (17X17)
4-440-057-01	SHEET, THERMAL (AYU2)
7-600-031-97	TAPE (3M 1350FB-1) 15MMX66M BLK
7-600-031-96	TAPE (3M 1350FW-1) 15MMX66M WHT
3-876-036-71	UNI-LABEL, BLANK

OPTIONAL ACCESSORIES

PART NO.	DESCRIPTION
4-414-470-01	SUPPORT BELT KIT




REMOTE COMMANDER

PART NO.	DESCRIPTION
1-492-065-21	REMOTE COMMANDER (RM-YD092)

APPENDIX A: ENCRYPTION KEY COMPONENTS

Encryption key components developed by Sony Corporation contain confidential information and shall be handled under the non-disclosure obligations provided in the applicable agreement with Sony Corporation (and/or its subsidiary).

As part of this agreement specific instructions must be adhered to whenever a Circuit Board containing encryption key components is repaired and/or replaced pursuant to the following:

1. In the service manual the Circuit Board(s) containing encryption key components shall be identified with a red outline and a .
2. Only repair boards or components listed in the service manual shall be utilized for replacement and/or repair.
3. Disassembly, decryption or reverse-engineering component(s) is strictly prohibited.
4. Any board in which the Servicer replaces an encryption key component must be placed back into the set it originally came from and the replaced defective component MUST BE DESTROYED. Boards cannot be swapped.
5. If a Circuit Board identified with a red outline and a  in the service manual is deemed to be defective:
 - a. and if a core charge is imposed and is covered under the product warranty, the defective un-repaired or modified board MUST BE RETURNED to Sony.
 - b. and if the core charge is NOT covered under the product warranty, the defective un-repaired or modified board MUST BE DESTROYED.
6. If a unit is destroyed (such as field scrap), the Circuit Board identified with a red outline and a  in the service manual MUST BE DESTROYED.

SONY® is a trademark of Sony Electronics.

Reproduction in whole or part without written permission is prohibited. All rights reserved.

Sony Corporation

Sony LCSC

Technical Services

Service Publications Department

9-883-586-01

English

2014BJ74WEB-1

© 2014.2