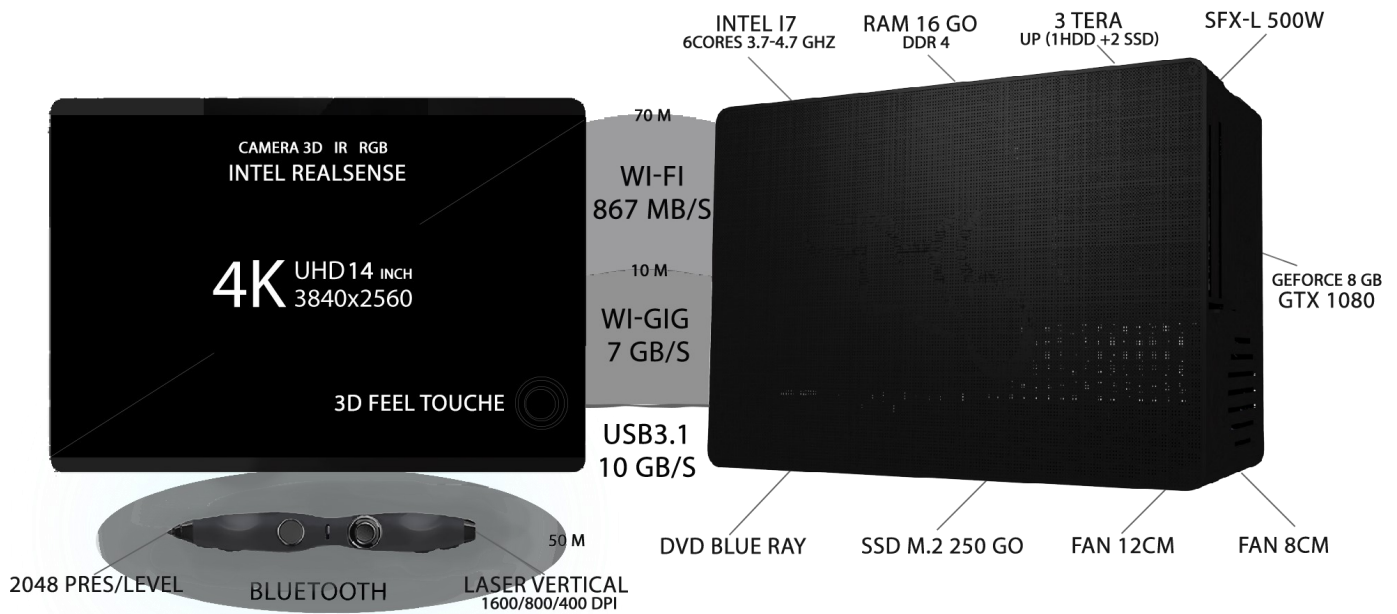


Evo Station: The most versatile and powerful tablet in the world

UHD 4K tablet with AR,ME,VR, motion sensor & 3D scanner powered by 100% scalable computer



OVERVIEW

Welcome to a world of versatility and power:

Control the dragon computer to distance and with no perceptible latency :thanks to the chimera tablet (7g/s WI-GIG connection) and the 4k feel touch screen or even without touching anything thanks to the built-in motion sensor ,or thanks to the Griffin mouse / stylus (BLUETOOTH connection) and its remote control functions.

Use it as:

-Home theater computer with its design and its minimalist dimensions it will be discreet but of great versatility, you can browse freely on the internet or view your favorite movies and series in UHD on your TV or other connected device, you can also go from Windows or Linux to the latest Android version of your tablet.

-Gaming desktop and spin up the most graphic games with the most up-to-date graphics and control them with the Griffin mouse / stylus in joystick mode, or in ultra-precise off-road mouse mode with the customizable chess keyboard tablet with added command and shortcut according to your wishes or explore the world of virtual reality and use the tablet in vr headset mode and control your movements with the motion detector and your movements with the Griffin mouse / stylus.

-Workstation and enjoy its power and its latest generation components from the labs Intel and Nvidia: you can connect multiple users with their simple mobile device or computer with a dedicated application and control their access to data and actions or you can focus all your power on ultra-realistic 3D scanning or creative potential and use the tablet in professional drawing mode and enjoy the precision of the Griffin mouse/ stylus.



Work



Home



Gaming

FEATURES

Dragon Computer (compatible Wi-Fi & WI-GIG, Bluetooth, USB3.1, and HDMI):

From the latest technologies and the latest generations of the most powerful standard-sized to large-sized components in a 100% scalable intelligent enclosure with the minimum amount of space required for perfect operation, this optimum-sized chassis has the ability to telescopic which increases its capacity of evolution by adjusting its volume according to your wishes it can reach up to more than 25% of gain of size (first telescopic computer in the world)

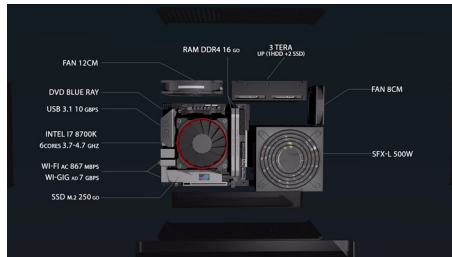
Specs : -Cpu: Intel i7 7800K the latest generation of Intel processors (gen8) 6cores 3.7 GHz turbo 4.7 GHz

-Gpu: GeForce 1080 GTX the latest generation of graphics cards Nvidia 10 Gbps 8 GB GDDR5X.

-SSD 250 GB 3,2 G/S + HDD 3 TO + Ram DDR4 16 GB + Burn DVD Blue ray + Power SFX-L 500w

-WI-GIG (Wi-Fi 802.11 ad) 7Gbps + Wi-Fi 802.11 ac 867 Mbps + USB 3.1 10Gbps + Fan (12 + 8) cm.

Three designs to incorporate the same components & laptop version to incorporate thinnest components



Chimera Tablet (compatible Wi-Fi & WI-GIG, Bluetooth, USB3.1, and HDMI):

Created to take full advantage of 3D technologies with a high resolution display and image refresh 4K UHD screen, it can be used as a screen to view its diameter of 14 inches in 3/2 format which thanks to the technology its board can fit in an A4 sheet format, the tablet is equipped with several 3D motion and scanner sensors and also realistic 3d touch technology that allows you to feel the buttons as if you were typing on a real keyboard.

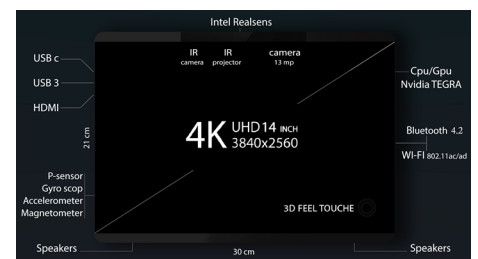
(First tablet with these types of sensors)

Intel realsense motion and depth detector:

- Hands to surf remotely without touching the screen
- Expressions to control an Emoji avatar in 3d
- face for secure facial identification
- Sets that allow 360° scans and change the background
- The environment to carry out strict measures
- objects allowing 3D scans

3d feel touch allows you to feel the relief of objects displayed: keyboard key, 3d object ...

Virtual reality headset enjoy the vr & mr in 4k with more than twice the PPD competition vr on pc, and in inside-out tracking with six degrees of freedom.



Griffin Stylus / Mouse (Bluetooth, USB compatible):

A v-track all-terrain mouse grafted on a high-precision stylus "with a precision of professional draftsman", with 4 buttons and 2 multi-directional controls so it allows a playful use perfect for playing and navigating with a professional precision

« high precision of movement »:

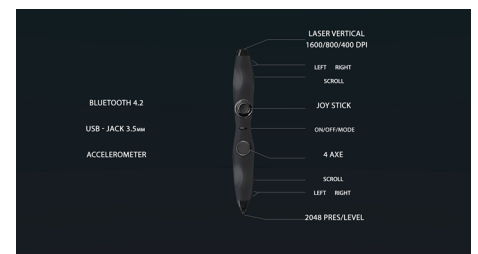
(the world's first stylus mouse command)

• Head of the Stylus 2048 pressure / level + tilt detection.

• Vertical laser mouse all terrain (glass, marble hair ...)

has DPI 1600/800/400 adjustable.

• Remote control 8 keys+8 axes usable as a joystick, control.



Functionality

Connected: Thanks to the 7 Gb / s Wi-GIG technology or if you prefer the USB 3.1 10 Gb / s you will have no perceptible latency even with configurations with maximum graphics or in VR .

Telescopic: The chassis can expand by more than 25% gain in size to accommodate new components.

Scalable 100/100 standard: it can integrate a full-size graphics card 31 cm, a motherboard itx standard hard disk HDD 32 and 2 SSD 24 and DVD player burner, a power supply sfx-l, Cooling fan cpu 12, fan chassis 12 and 8 can integrate a liquid cooling of 24 cm long.

Discover: the world of virtual reality on screen 4k UHD with its multiple motion sensors you will have a perfect immersion with inside-out tracking and six degrees of freedom.

Freedom: You can also navigate in remote control or joystick mode with the freedom to configure any key.

Realistic feeling: Thanks to the haptic feedback you will have the sensation of touching reliefs in 3d, you will be able to touch the textures of the wood of the marble turf. . .

Ease of use: can be used as a joystick, remote control or as a stylus with a precision of 2048 dpi professional draftsman and as a mouse v-trace with a precision of professional players and sensitivity adjustable 400/800/1200 according to your needs and on all surfaces glass, cover, marble, wood...

Enjoy: Scan your objects and make unique memories, Isolate yourself from the background for unusual effects and optimal augmented reality and enjoy secure facial recognition

Navigate without touching anything: Thanks to the motion sensor on your fingers you can browse Windows without touching anything with ease

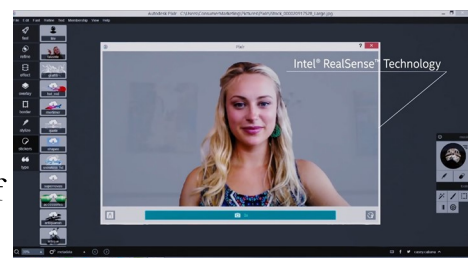
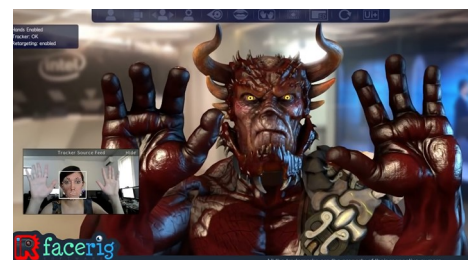
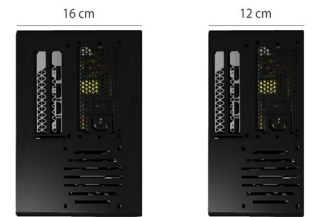
Incarnate: thanks to applications such as IR anger control your avatar: face, hands, gesture, and grimace, free to create a feature film or to have fun with your friends

Play easily: With the capture of your movements from your gestures played to dedicated games or replace the controls in standard games share gestures of your imagination

Custom: Create or download store shortcuts or command combinations for easier and faster navigation and control, also integrate the ability to replace your clicks with a command for easy use.

Control: Choose what will be shared and the commands that can go with to keep control of your content easily share all your content with dedicated commands simulated image for illustration only

Sharing: Ability to play up to 8 on the same game with the possibility of sharing orders or watch each one a film on a screen apart



FAQ

How is it composed? By combining a Hi-Tech tablet computer with an ultra-powerful computer we come to this result, the computer takes the form of a mini box 100% scalable.

How are they connected? Two types of connection are possible WI-GIG with 7 Gb / s at a distance of 10 M going to WIFI for the great distances between the tablet and the computer or thanks to a cable with 10 Gb / s USB 3.1 gen 2

Why such power? This power allows us to make the most of the new technologies thanks to the great capacity of calculation and processing of the 3d renderings, it allows an easy access to the VR and to the AR, and to the motion detection and the 3d scan of the environment or objects, that's why it is associated with a multi-task tablet that is equipped with a 4k UHD screen equipped with the 3d real sense of Intel.

What way to navigate? You can navigate even without touching anything with the motion sensor, or feel what you touch with the feel-touch capability of the screen or in a more traditional way with the stylus or mouse (combined for the occasion)

Under which system? : The tablet can easily switch from its operating system (Android) to that of the computer (Windows or Linux).

For what purpose? First of all, greatly improve the user experience and access to the best technologies for professionals and individuals.

