

Microsoft Server 2012 R2 RDS VS Citrix XenApp/XenDesktop ...a comparison

Wilco van Bragt & Freek Berson

@wilcovanbragt

@fberson

Introduction



Wilco van Bragt

VanBragt.Net Consultancy
Microsoft MVP (RDS) / Citrix CTP
virtualization.vanbragt.net
@wilcovanbragt



Freek Berson

Wortell
Microsoft MVP (RDS)
Themicrosoftplatform.net
@fberson

Naming convention

Citrix



Metaframe

Presentation Server

XenApp

XenDesktop

We'll just call it XenApp (again) ☺

And our users just calls it Citrix

Microsoft



Terminal Services (TS)

Remote Desktop Services (RDS)

Session Based-Desktop Deployment

We'll just call it RDS ☺

Start

Wilco
&
Freek



AaaS

(Agenda as a Service) 😊

E2EVC, Brussels



30
Friday



Search



Share



Start



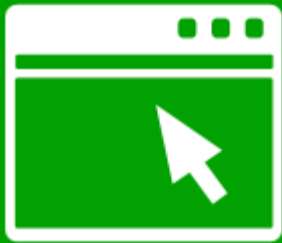
Devices



Settings

Start

Wilco
&
Freek



Remote Apps vs
Published Applications



User Profile Disks vs
personal vDisk



RDMS vs
AppCenter/Studio



Non-Windows clients vs
Citrix Receivers



Azure Remote Apps &
Citrix Workspaces



Shadowing (Remote
Control)



Easy print vs
Universal print



Configuration
locations



Load balancing



Search



Share



Start



Devices



Settings

Microsoft: Remote Apps

REMOTEAPP PROGRAMS

Last refreshed on 2/18/2014 12:03:45 PM | Published RemoteApp programs | 3 total

Filter



RemoteApp Program Name Alias Visible in RD Web Access

Calculator

Paint

WordPad

Remote Desktop

Company Apps
Desktops

Apps

Office 2013



Mixed Session Collecti...



Calculator



DespicableMe2



Paint



WordPad



Excel 2013



OneNote 2013



Outlook 2013



PowerPoint 2013

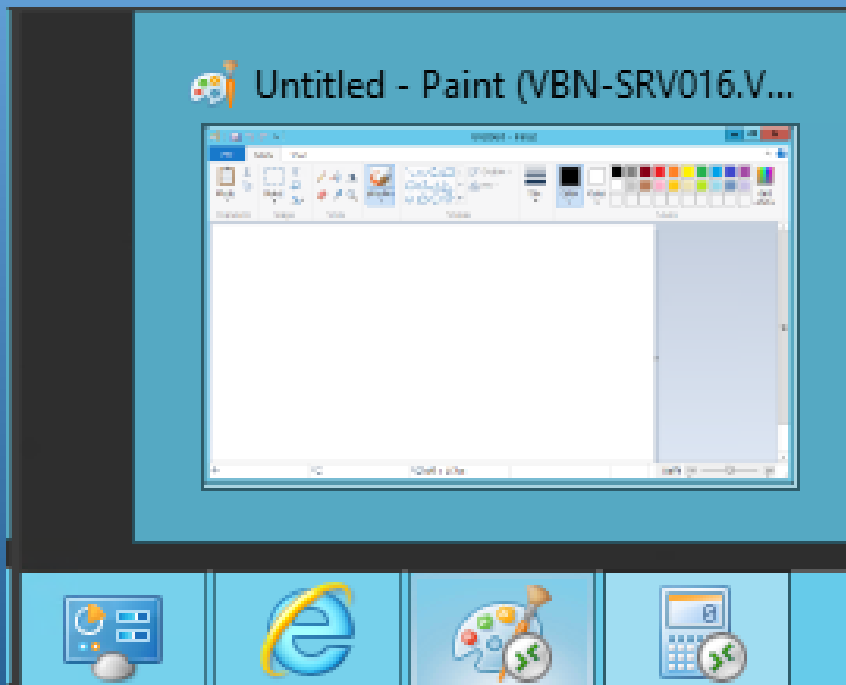
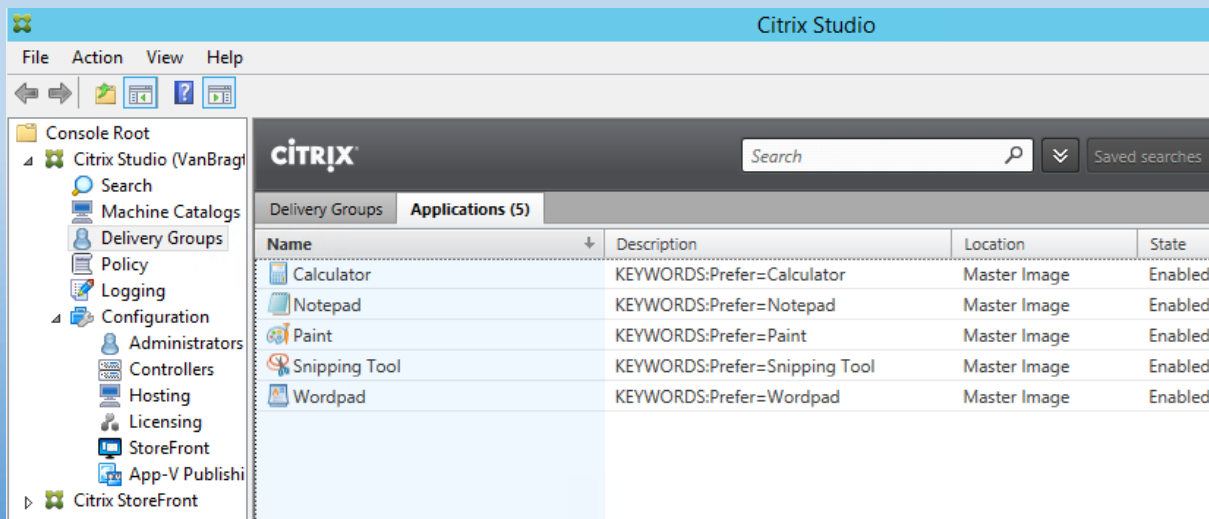


Word 2013

Improvements in 2012 (R2):

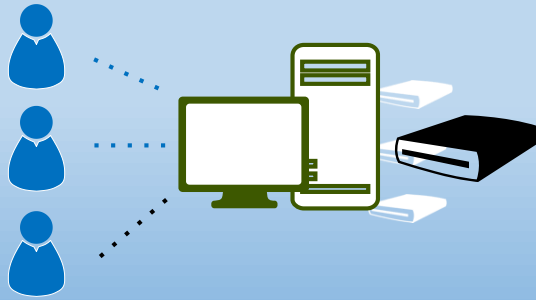
- Admin:
 - Centrally managed in RDMS
- User:
 - Subfolders
 - Full transparent window Support
 - Moving & resizing
 - Live taskbar preview
 - Switching landscape & portrait
 - These Features can be disabled in GPO

Citrix: PA/PD



- Citrix depends on Microsoft implementation for the basics (but do not use all R2 improvements [yet])
- Enhancements further on in the HDX stack
- Reverse Seamless (local app in Citrix session) in XD7.x

Microsoft: User Profile Disks (UPD)



User Profile Disk with
remote desktop session host
collections

User Profile Disks

User profile disks enable users to store settings and folders in a central location. You can enable folder redirection and user profile disks in a collection. The servers in the collection must have full control permissions on the user profile disk share, and the current user must be a member of the local Administrators group on that server.

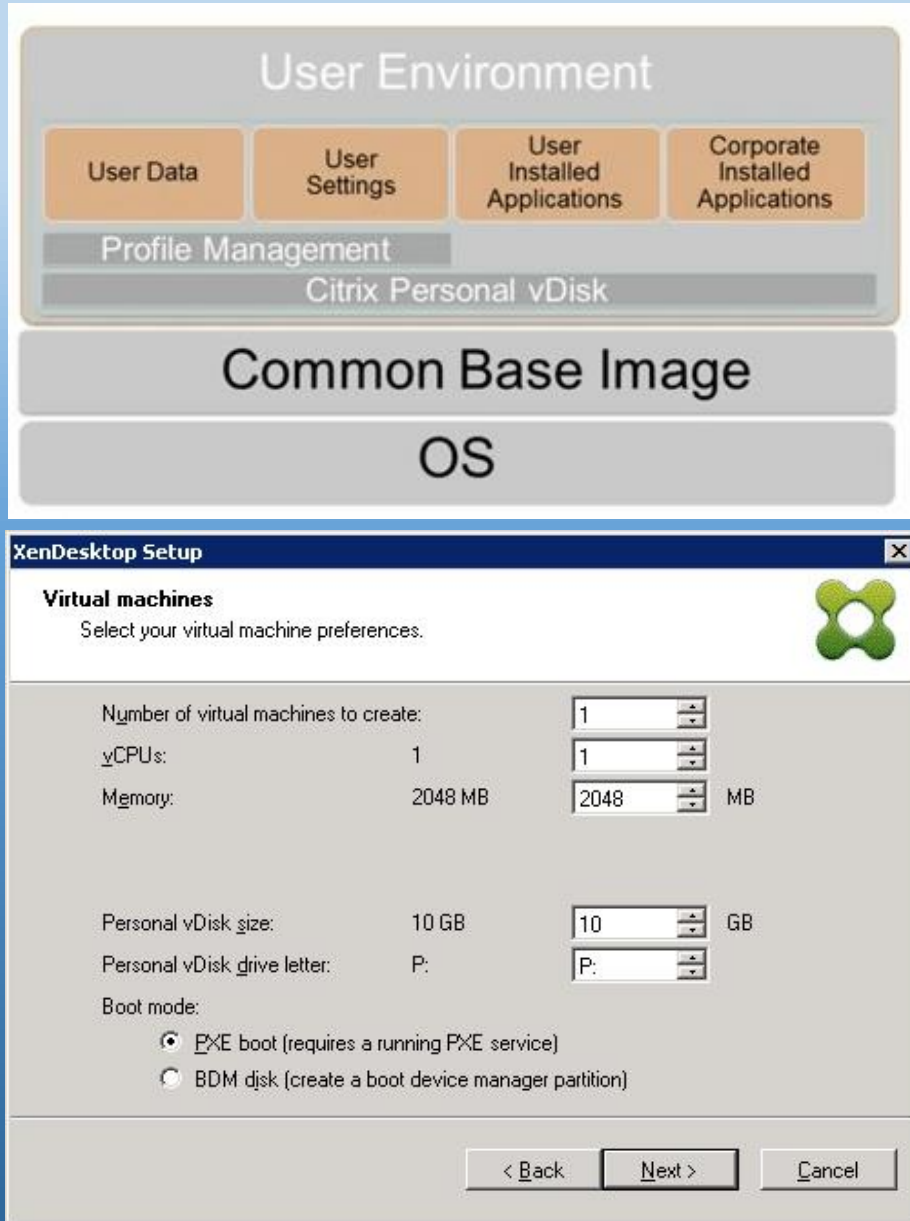
☒ Enable user profile disks

Location:

\\rdcb01-vdi\UPD

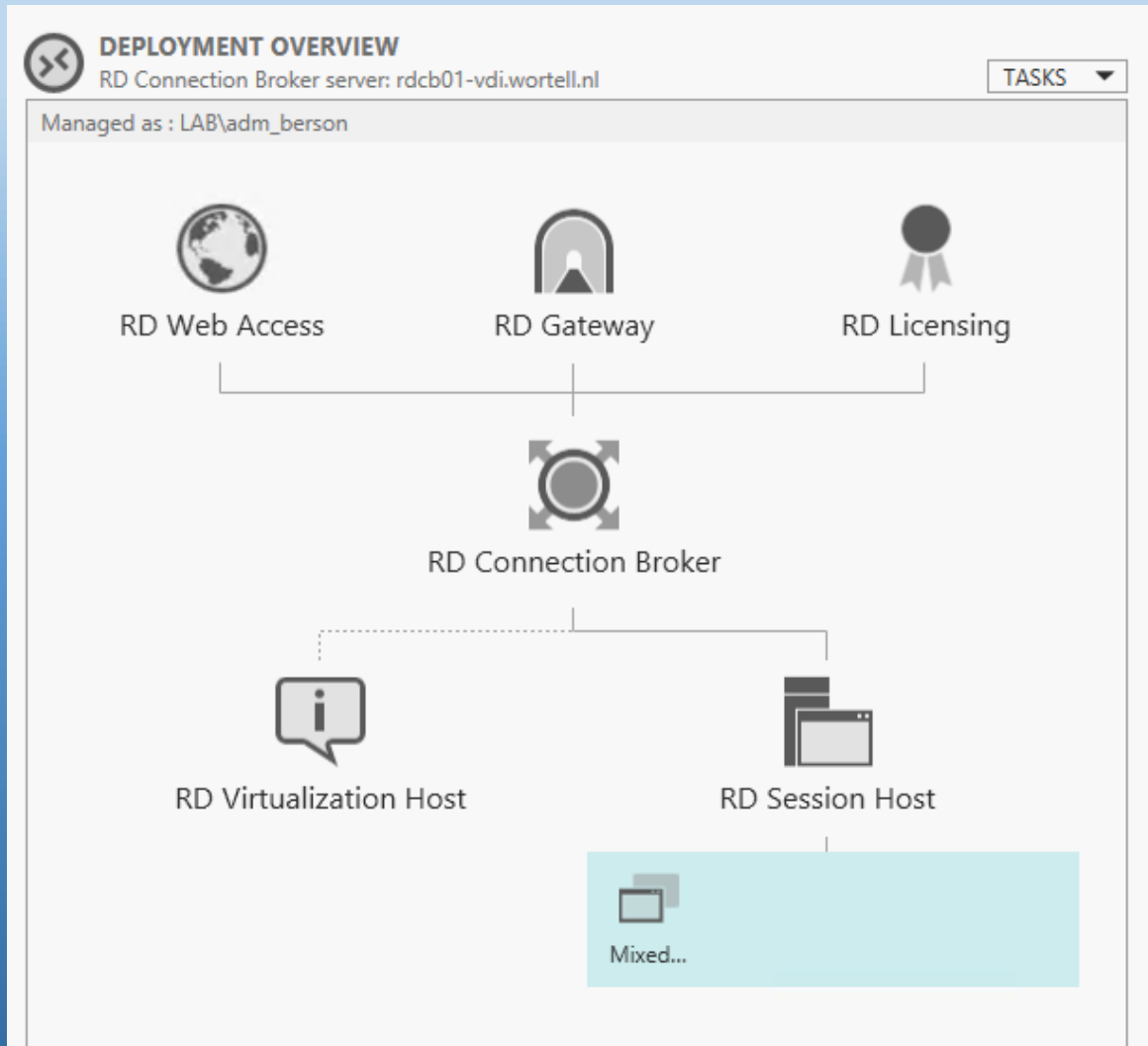
- Pooled VM collections and RDSH collections
- Stores all user settings and data in a single .vhdx file
- Contains roaming user profile, Folder Redirection cache, and user environment
- Roams with user within collection
- Appears as a local disk and improves application compatibility
- Support for deduplication

Citrix: Personal vDisk (PvD)



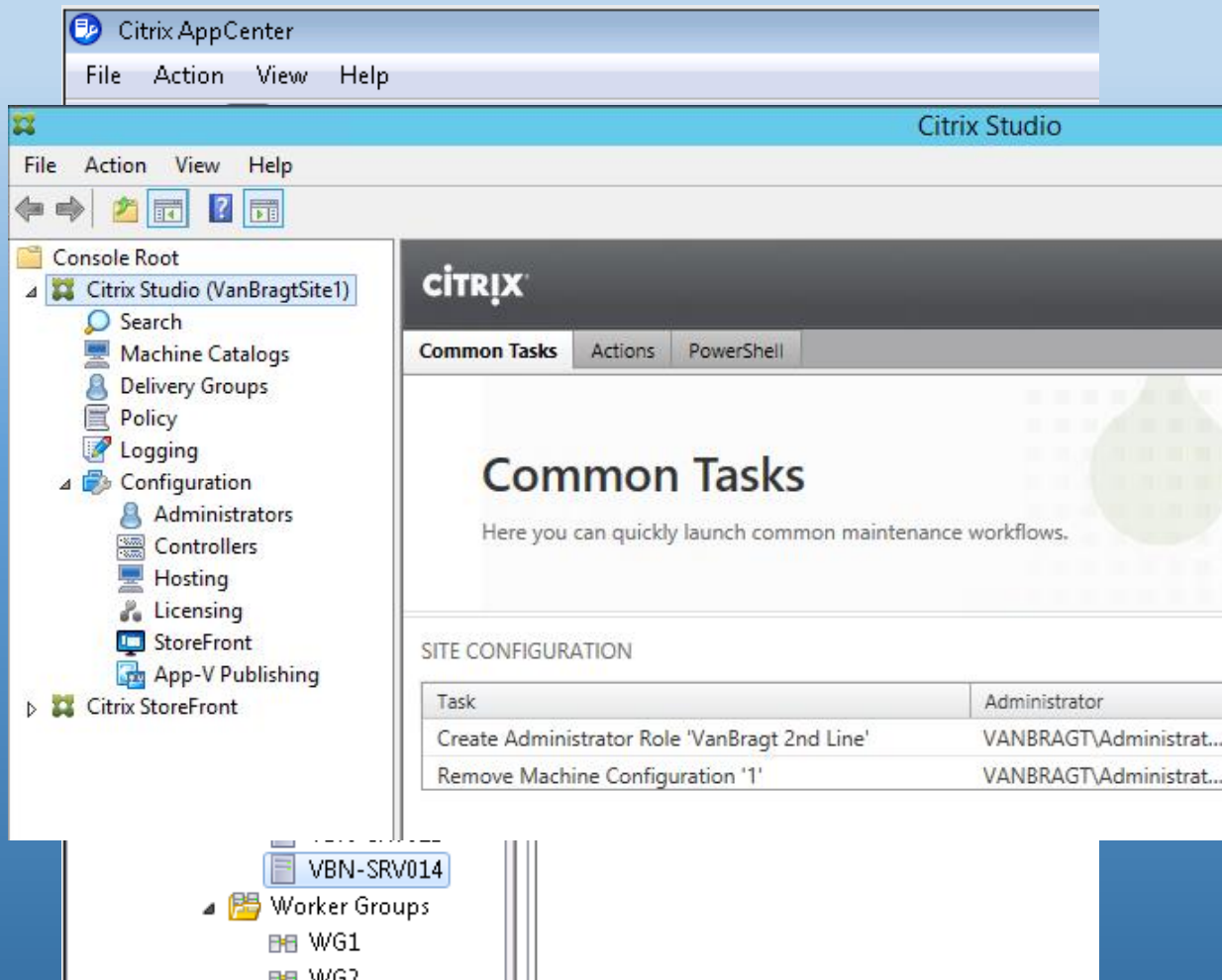
- Only for XenDesktop (Client OS)
- Stores all user settings and data in a single virtual machine disk
- Contains user profile, data and installed user applications
- Specific to one VM per user (1-1)

Microsoft: RDMS



- Integrated in Server Manager
- Single Management Interface
- Scenario-based deployment
- 3 deployment types, 1 console, 1 user experience
- Full PowerShell support

Citrix: AppCenter/Studio



- Both stand alone installation and embedded in product installation
- Single Management Interface
- Different product / Different console
- Seperated console for monitoring (in XD)

Microsoft Shadowing (remote Control)

Remote Control Request

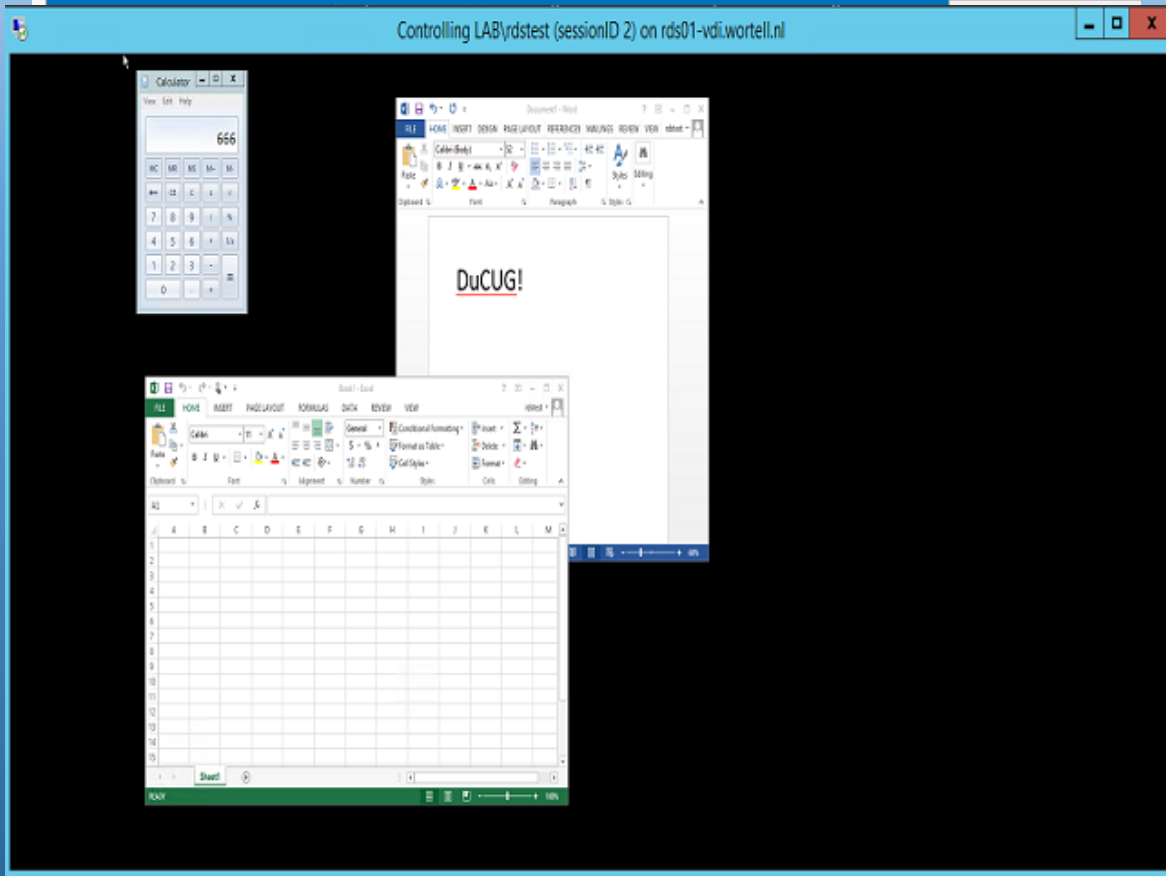
LAB\administrator is requesting to control your session remotely. Do you accept the request?

CONNECTIONS

Last refreshed on 3/3/2014 8:02:46 AM | All connections | 1 total

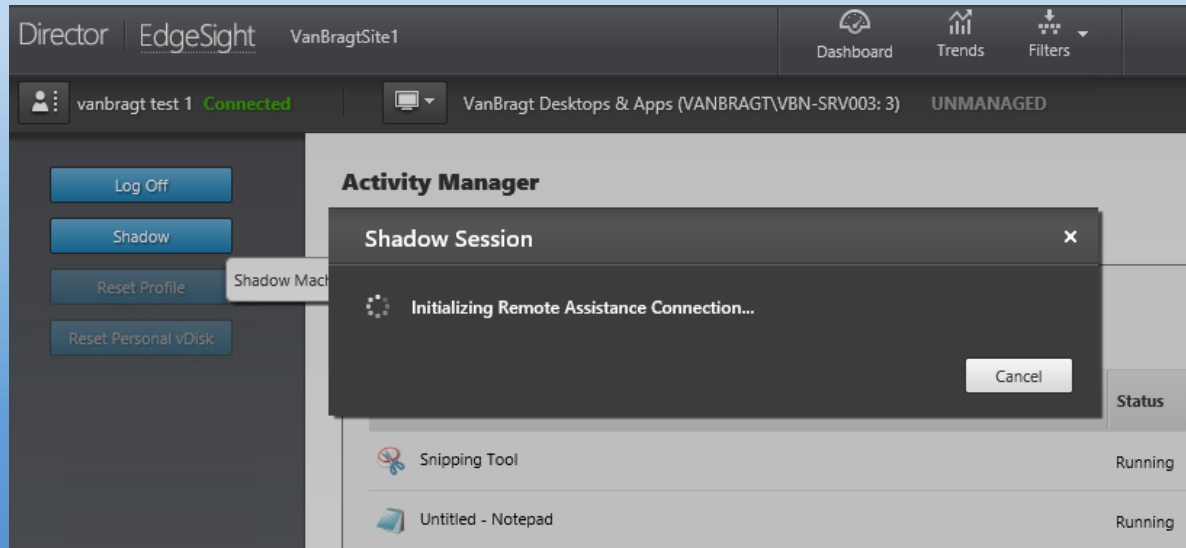
Filter

Server FQDN	User	Session State	Log On Time	Disconnect Time	Idle Time
-------------	------	---------------	-------------	-----------------	-----------



- Reintroduced in Windows Server R2
- Part of the mstsc client
- Command line & GUI
- Support for Remote Apps

Citrix: Shadowing / Remote Assistance



- Relying on Microsoft Technology
- XenApp 6.5 -> Shadowing (with multiplescreen issues) / Remote Assistance
- XenDesktop 7.x --> Remote Assistance

Microsoft: non-Windows RDP Clients



- Introduced in October 2013
- Available in App stores for iOS, Android, MacOS
- High updating sequence
- Also supporting Web Access

Microsoft: non-Windows RDP Clients

T-Mobile NL 11:49 27%

Cancel Remote Resources Save

SERVER

URL <https://rds2012r2-demo.wo...>

You can get this URL from your administrator.

CREDENTIALS

User name lab\rdstest

Password

T-Mobile NL 11:30 39%

Search

Remote Desktops

New Remote Desktop

Remote Resources for <https://137.116.217.114/r...>

Calculator

DespicableMe2

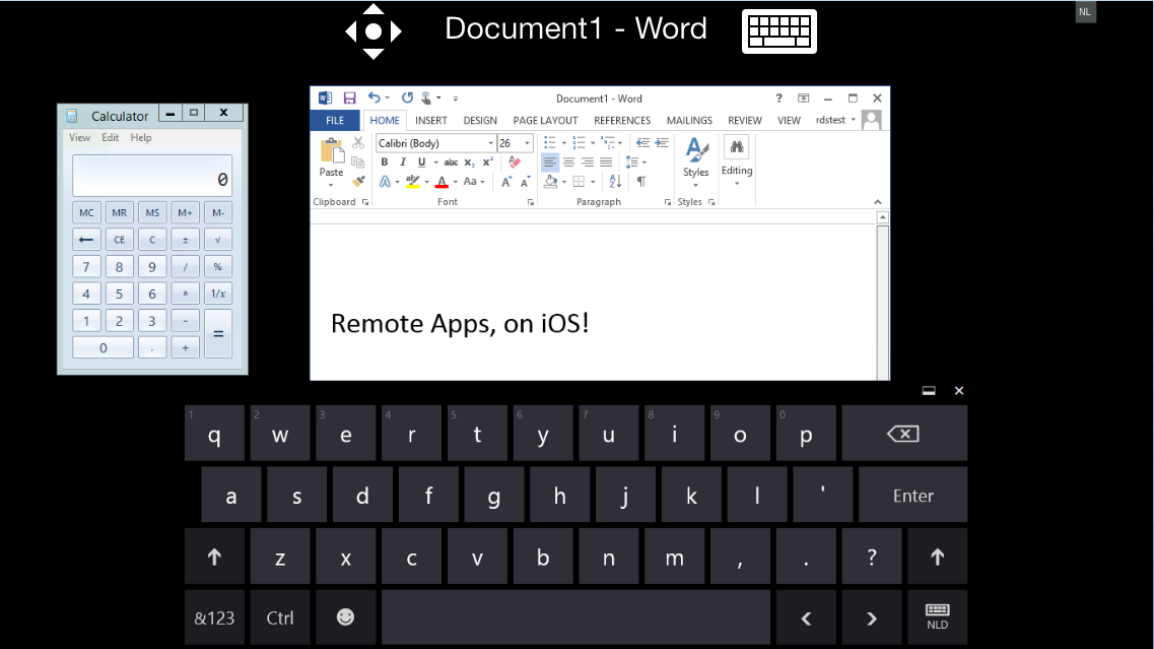
Excel 2013

OneNote 2013

Outlook 2013

Paint

PowerPoint 2013

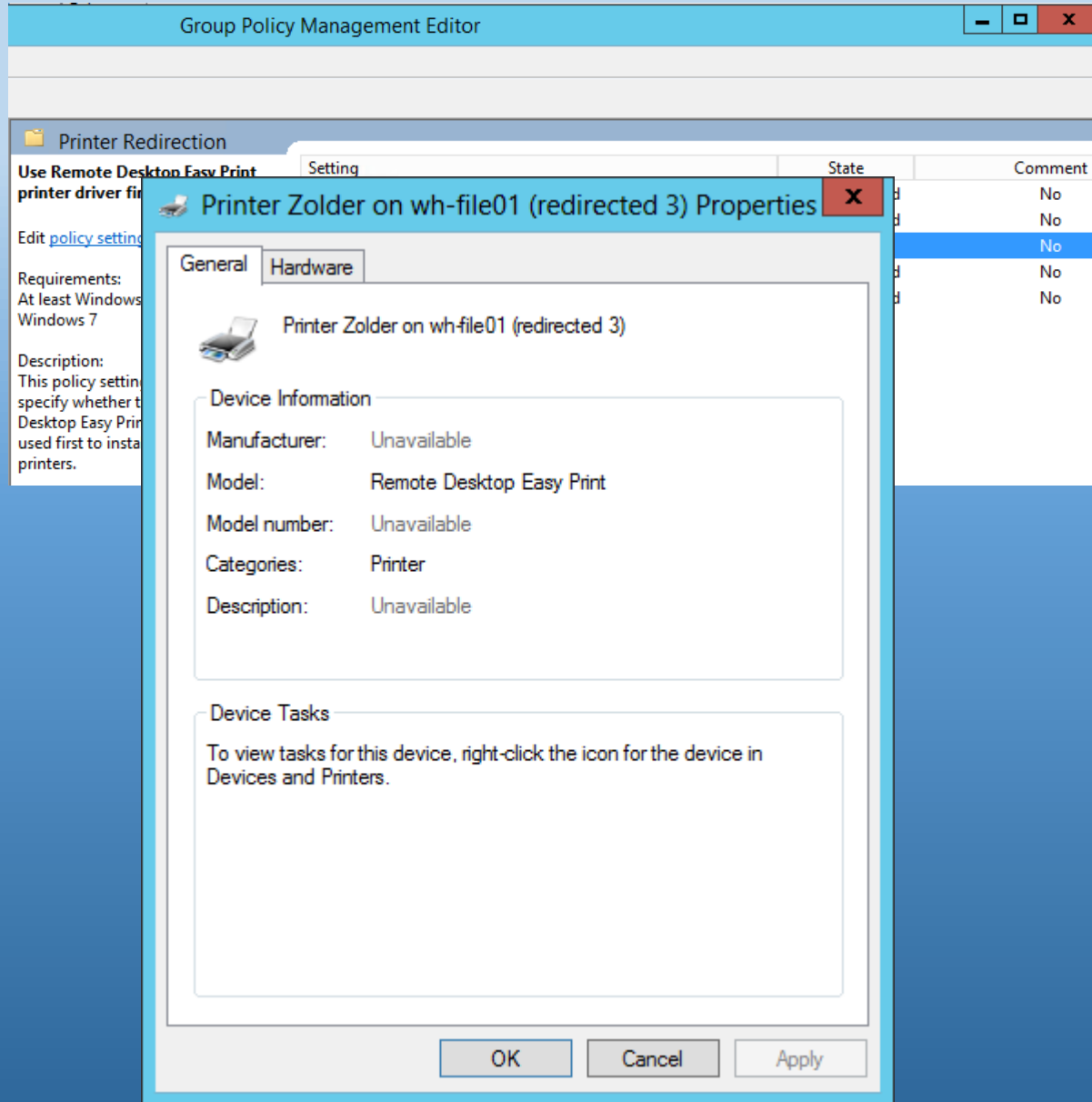


Citrix: Receiver Clients



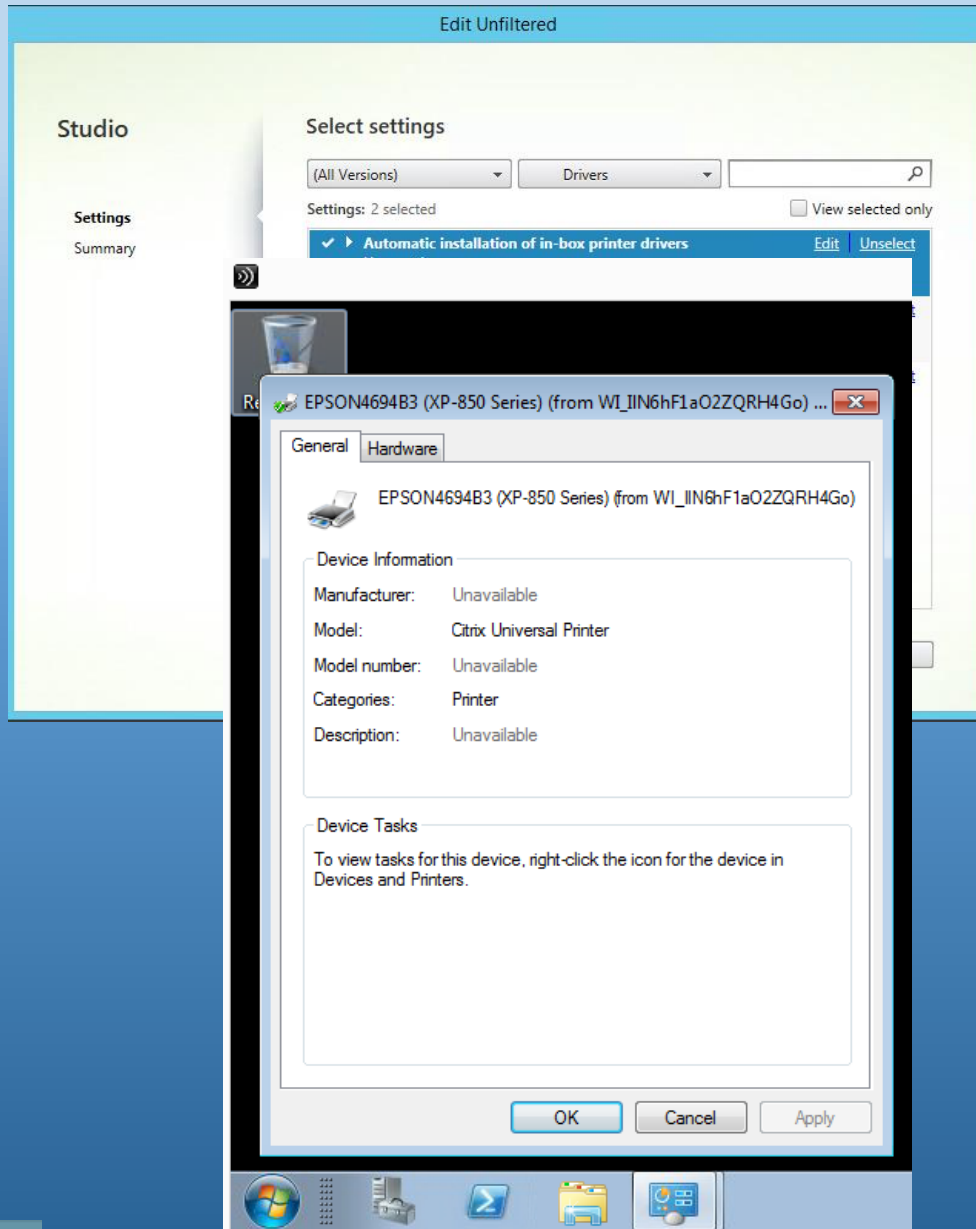
- Available for a long time
- Available in App stores and Citrix Download website
- HTML5 Receiver, the new future?

Microsoft: Easy Print



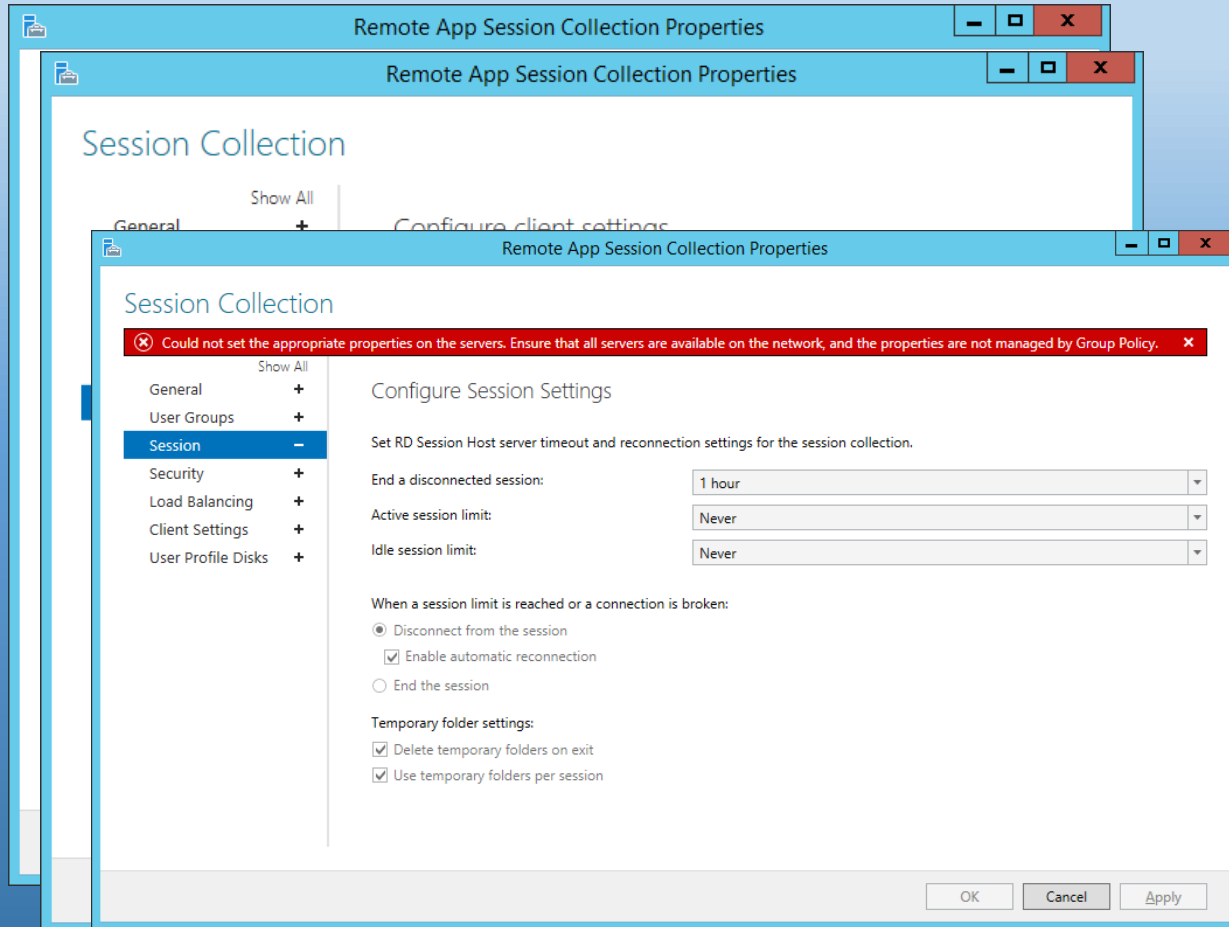
- Available from Windows 2008 or above
- Easy Printer for all connections or Fallback (if 3rd party/ inbox driver is not available)
- Not many enhancements after initial release

Citrix: Universal Printing



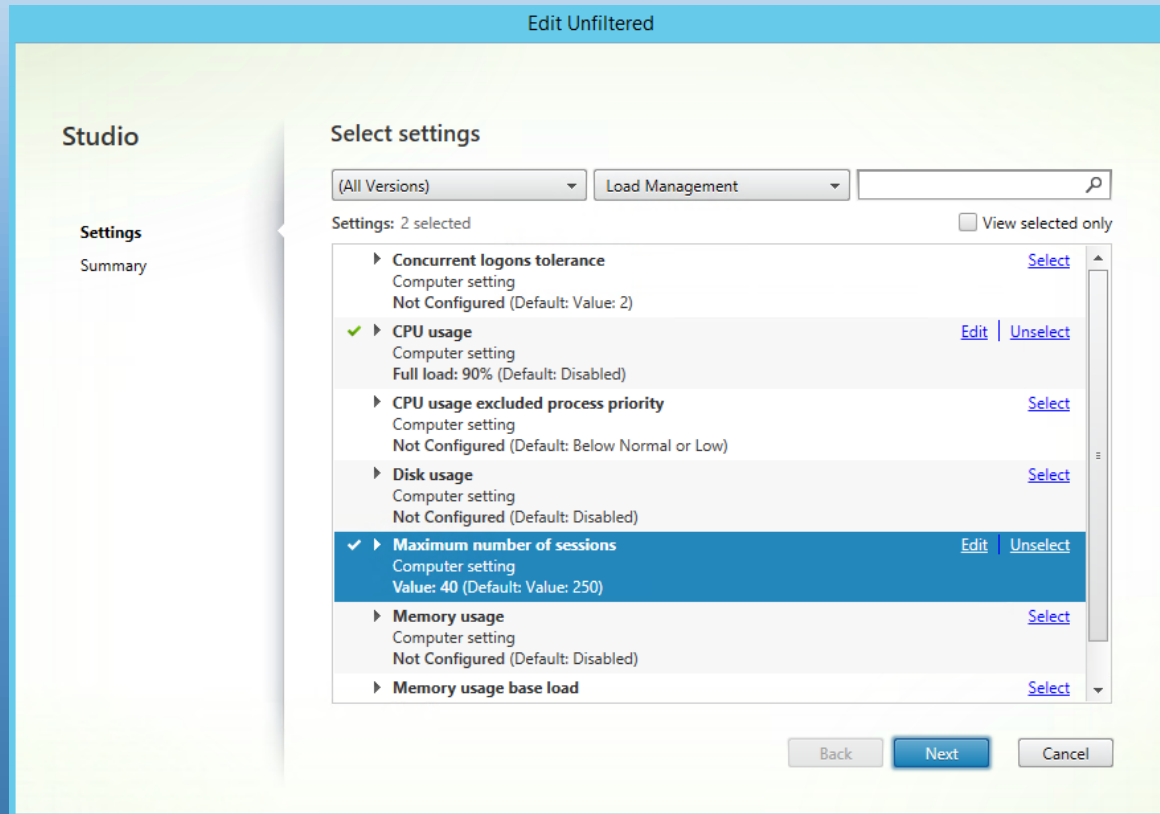
- Client UP available for a long time
- "Disable installation of inbox-driver" setting
- Not much enhancements in the latest releases
- First version for network printers, no enhancements after initial release

Microsoft: Configuration settings to Management Console



- More settings adjustable via the Management Console with each new release
- Also available in GPO (if conflicting, GPO wins)
- Can be a bit confusing

Citrix: Move configuration to Policies



- More settings out of the console into policies
- Policies both in console as GPMC (GPMC wins)
- Still a (big) feature gap between XenApp 6.5 and XenApp/Desktop 7.x

Microsoft: Load Balancing

The screenshot shows the Microsoft RemoteApp and Desktop Connections console. The top section displays settings for the RD Connection Broker, with columns for Setting, State, and Comment. Below this, the 'HOST SERVERS' section shows a list of servers with columns for Server Name, Type, Virtual Desktops, and Allow New Connections. A filter box is present above the server list. The bottom section shows a SQL query in the SQLQuery2.sql - RD...administrator (58)) window, which is a script for the SelectTopNRows command from SSMS. The query selects various fields from the [RDMS].[rds].[Session] table. The bottom of the screenshot shows the results of the query in a table with columns: Userid, Username, UserDomain, SessionId, CreateTime, DisconnectTime, InitialProgram, and Protocol.

Setting	State	Comment
Join RD Connection Broker	Not configured	No
Configure RD Connection Broker farm name	Not configured	No
Us		No
Cc		No
Us		No

HOST SERVERS
Last refreshed on 3/7/2014 7:38:18 AM | All servers | 1 total

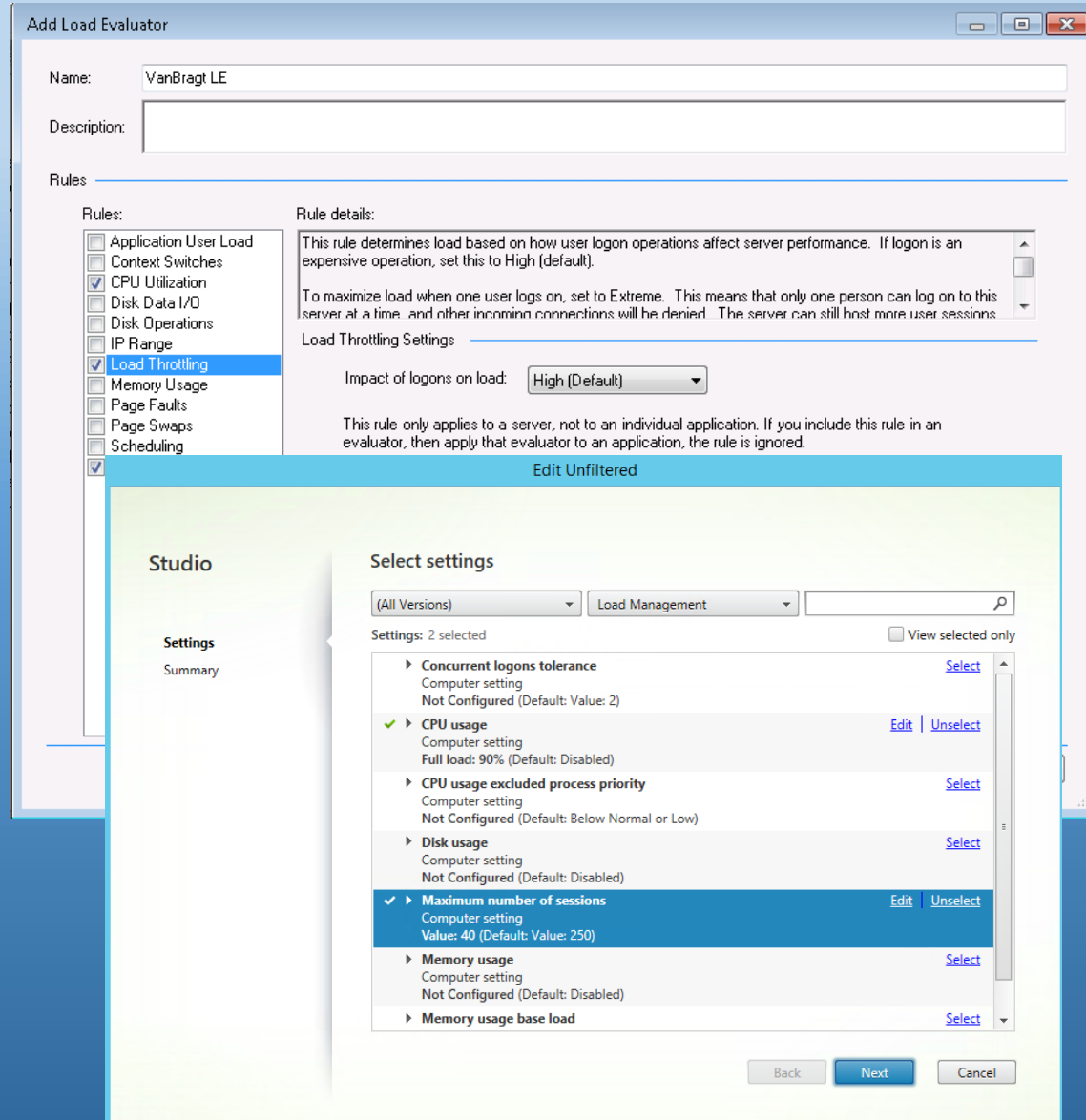
Server Name	Type	Virtual Desktops	Allow New Connections
-------------	------	------------------	-----------------------

```
SQLQuery2.sql - RD...administrator (58)) *  
/***** Script for SelectTopNRows command from SSMS *****/  
SELECT  
    [UserId],[UserName],[UserDomain]  
    ,[SessionId],[CreateTime]  
    ,[DisconnectTime],[InitialProgram]  
    ,[ProtocolType],[State]  
    ,[ResolutionWidth],[ResolutionHeight]  
    ,[ColorDepth]  
FROM [RDMS].[rds].[Session]
```

Userid	Username	UserDomain	SessionId	CreateTime	DisconnectTime	InitialProgram	Protocol
1	rdstest	RDPDOC	2	130386145654916490	130386513429491212	NULL	2

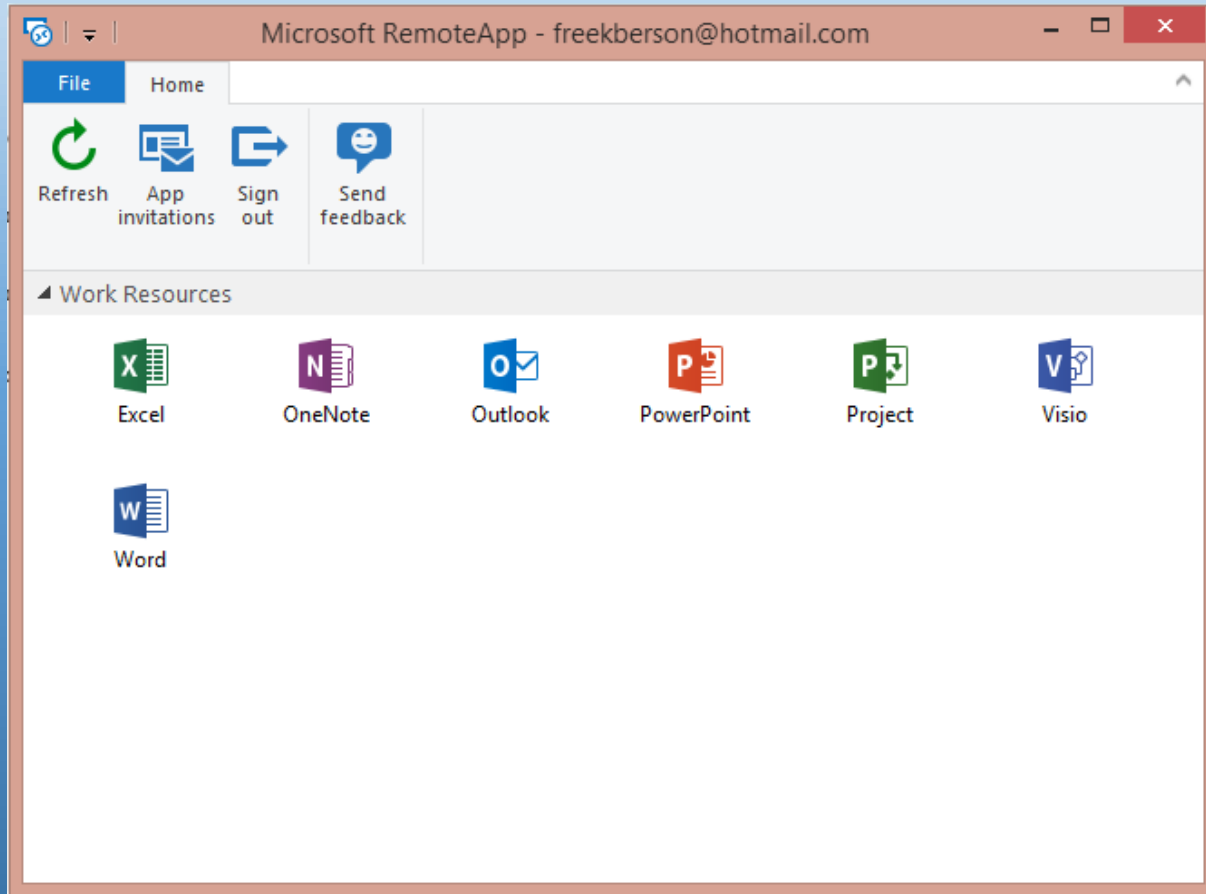
- Basic Load Balancing (least sessions) and reconnection out of the box
- Configured by RDMS, can be disabled using GPO
- RD Connection Broker handles initial connection
- Session table in RDMS database

Citrix: Load Evaluators



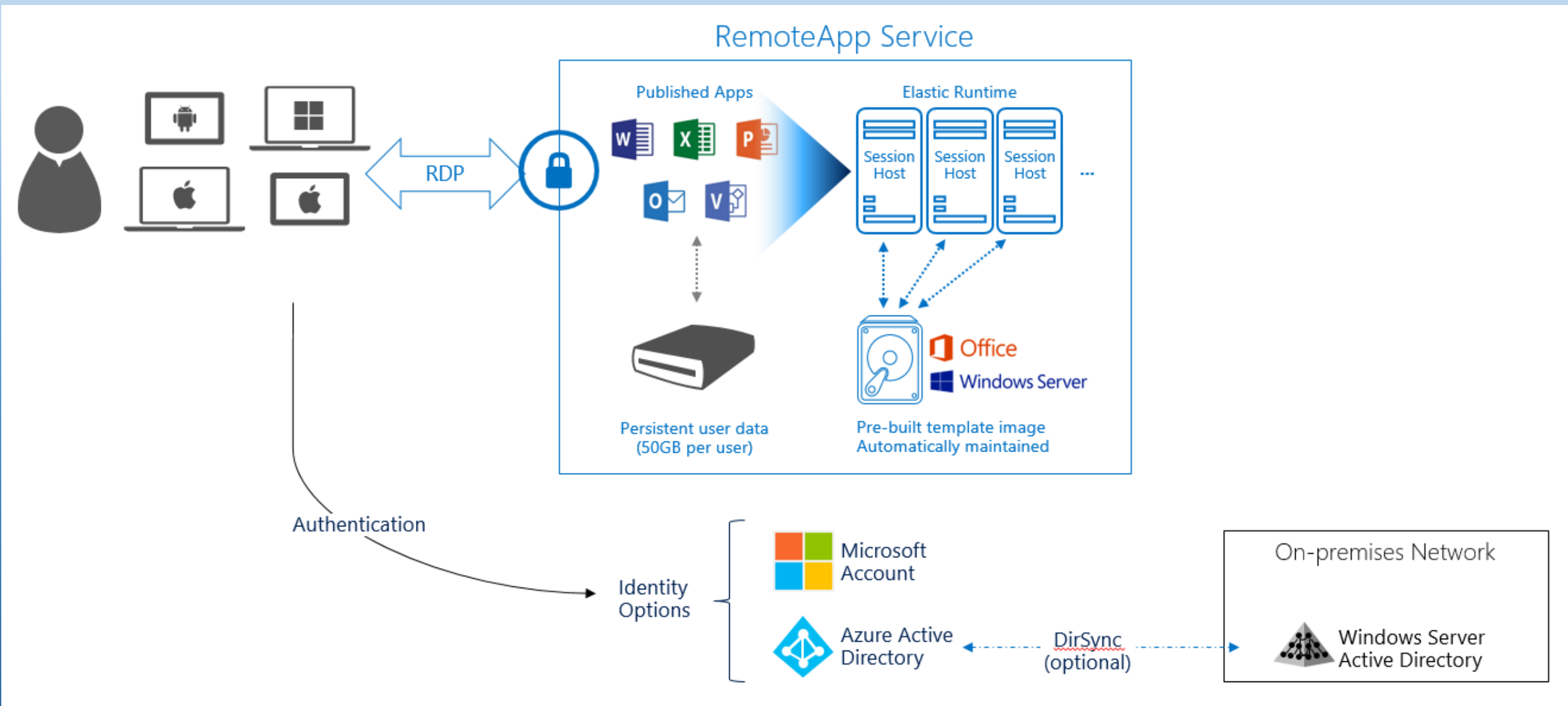
- LE in console, assigning in policies in XenApp 6.5/ Fully in policies since XD/XA 7.x
- Still the most adjustable and configurable LB
- Feature gap between XA 6.5 and XD/XA 7.x
- Adv Load Balancing in XA 6.5

Microsoft Azure Remote App

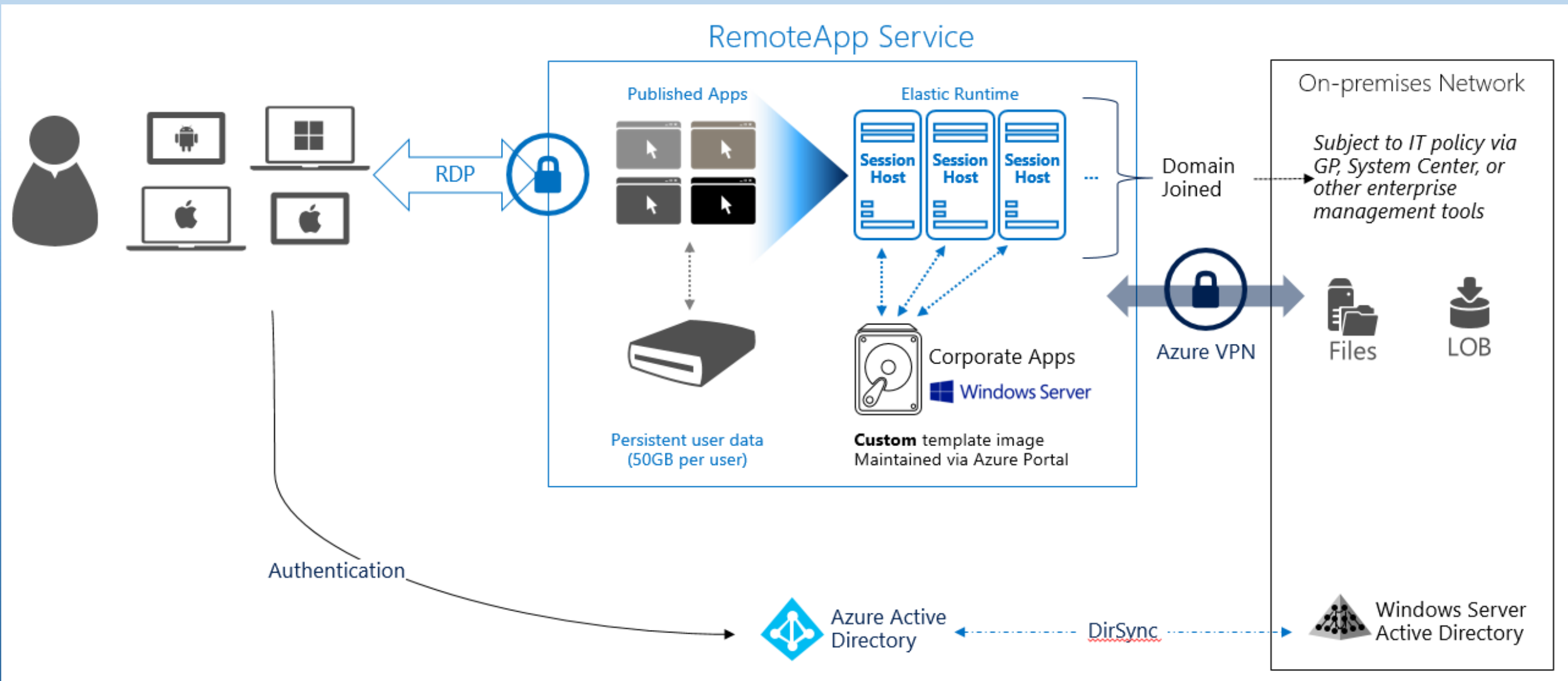


- Publishing Remote App running on Microsoft Azure
- Two deployments
 - Cloud Deployment
 - Hybrid Deployment
- Currently in preview

Microsoft Azure Remote App (Cloud Deployment)



Microsoft Azure Remote App (Hybrid Deployment)



Microsoft Azure Remote App (Feature set)

Features

Price (per user)	Free during preview
Window Server version	Windows Server 2012 R2
Remoting Protocol	RDP 8.1
Microsoft Office Professional Plus 2013	✓
Bring your own applications	✓
Device platforms	Windows 7/8.x, iOS, Android Coming soon: Windows Phone, Windows RT, Mac OS X
Microsoft Account support	✓
Federated Identity with Active Directory	✓
Integration with On-Premises IT Infrastructure	✓
Storage (per user)	50 GB
Initial capacity at preview	20 users per Azure account. <i>Customers can request additional capacity during the preview.</i>
Regions	US East, US West, Europe North, Europe West, Asia Pacific East, Asia Pacific Southeast



Citrix Workspaces



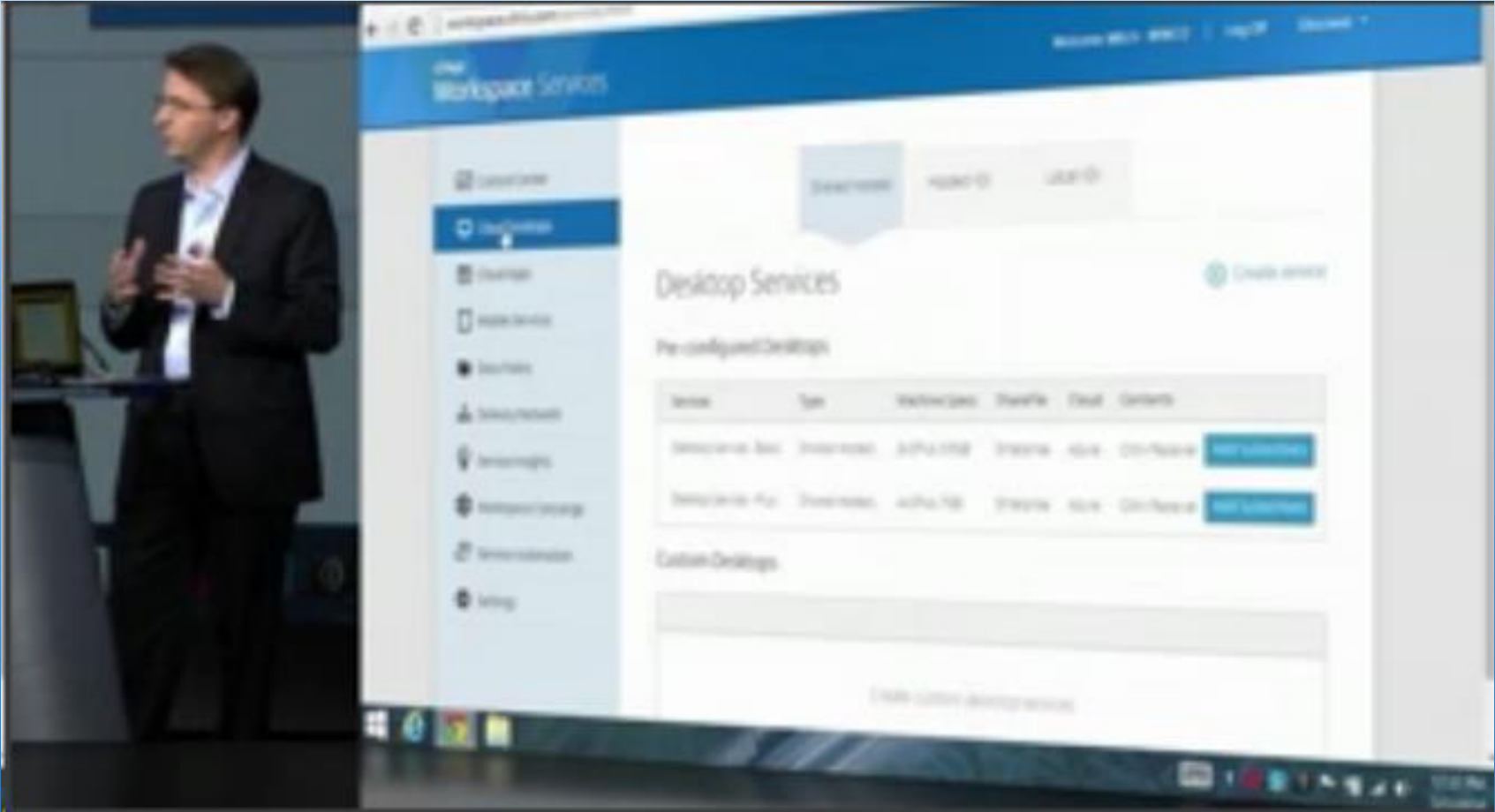
- Cloud Based Control Pane Citrix Products
- Looks like it's not providing a desktop or apps by Citrix themselves
- Preview H2 2014



Citrix Workspaces



Citrix Workspaces





- Questions?

Thank you!

Wilco van Bragt & Freek Berson

@wilcovanbragt

@fberson