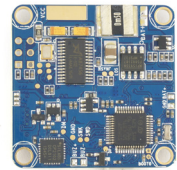
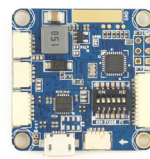
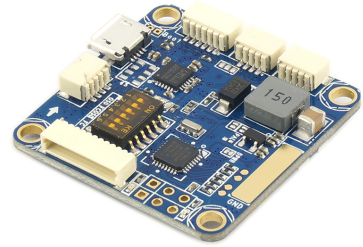


Please Read the switch define on 2nd page before use the FC

FLIP32 AIO Flight Controller Acro & Pro v1.02

The All-in-one solution for FPV, incl. almost everything FPV needed (excl. RF) on 35x35 mm PCB.

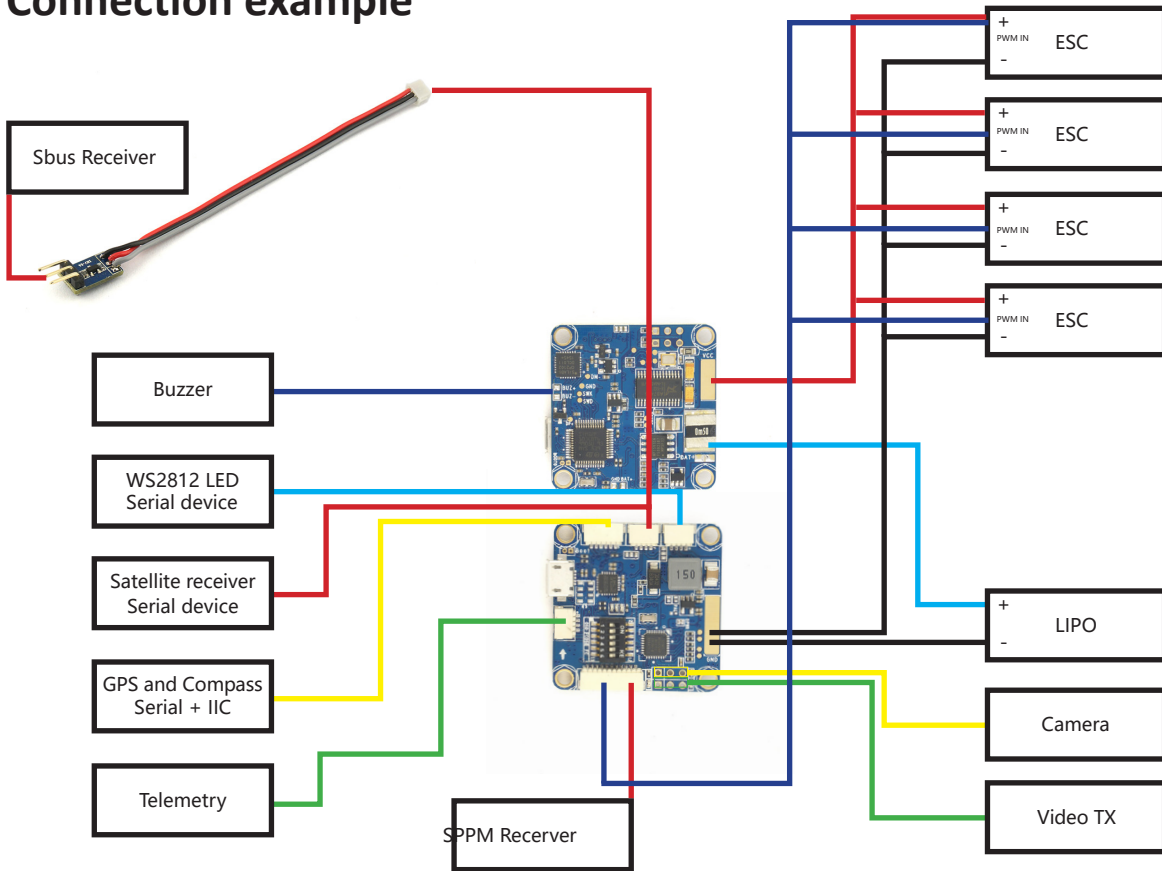
- STM103 MCU runs Cleanflight firmware
- 8PWM output, supports Octocopter
- Optional MS5611 Barometer
- Only 35x35mm, mount holes 30x30mm
- Onboard USB (for config the OSD and FC)
- incl. 5V 3A UBEC (2-6S)
- incl. complete OSD hardware, Compatible with MinimOSD/ MWOSD/CC3D OSD
- incl. one small PDB
- incl. Current and voltage sensors
- Better OSD Chip used, less power consumption(at least 10 degree lower compare to normal OSD)
- 2x Software serial, 2x Hardware serial ports



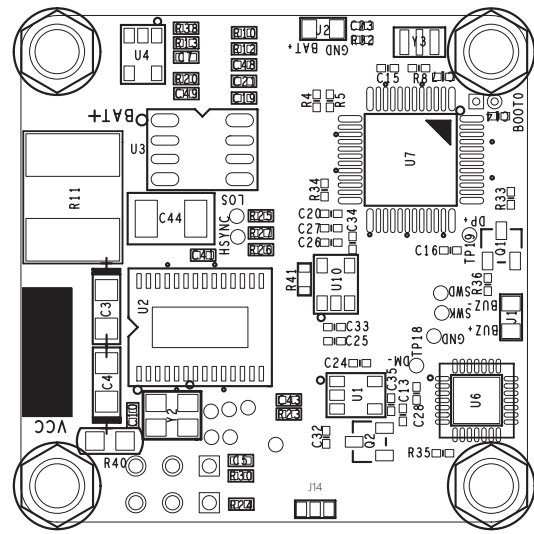
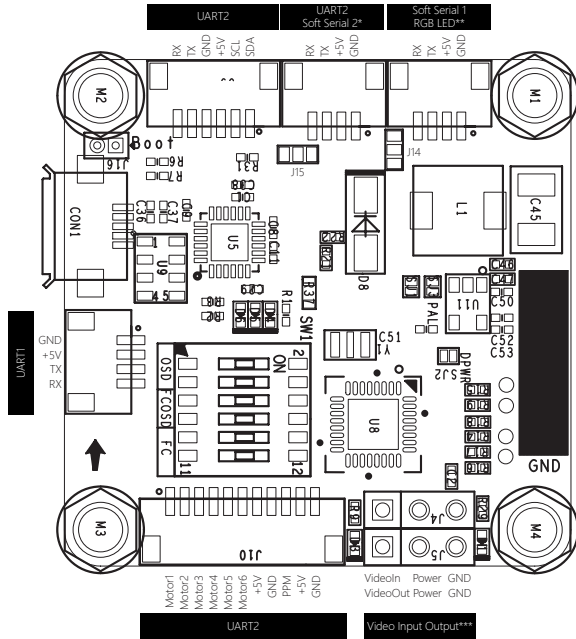
OSD Burn Issue fixed

- * ACRO version hasn't MS5611 on board
- ** This version ONLY Supports SPPM and Satellite receiver
- *** The OSD powered by UBEC, it works only when you connect the lipo

Connection example



Pin Define



* Default connected to UART2's RX and Current sensor.

If: Software Serial 2 DISABLED, then: Current sensor works, Serial receiver shares UART2

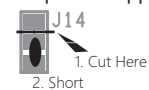
If: Software Serial 2 ENABLED, then: Current sensor DOESN'T work, there are Soft Serial RX2, Soft Serial TX2, +5V, GND

The jumper 15 can be setted like this:



Then the RX pin will be connected to Software Serial RX2(Please enable Software Serial 2 in GUI)

The power supply voltage on this port, could be setted by jumper too, default is 5V, set the jumper 14 like this,

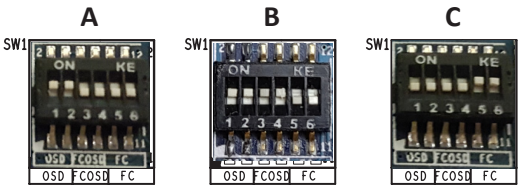


will turn the voltage to 3.3v

** Default connected to RC_CH6 and RC_CH5, when ENABLE software serial1, then there are RX TX +5V and GND, when WS2812 LED enabled, then there are RGBLED NC +5V GND

*** The power source of Camera could be setted by J11

Switch Define



- A: OSD Mode, CP2102 connected to OSD
- B: FC Mode, CP2102 connected to FC
- C: FLY Mode, FC connected to OSD, CP2102 connected to nothing

