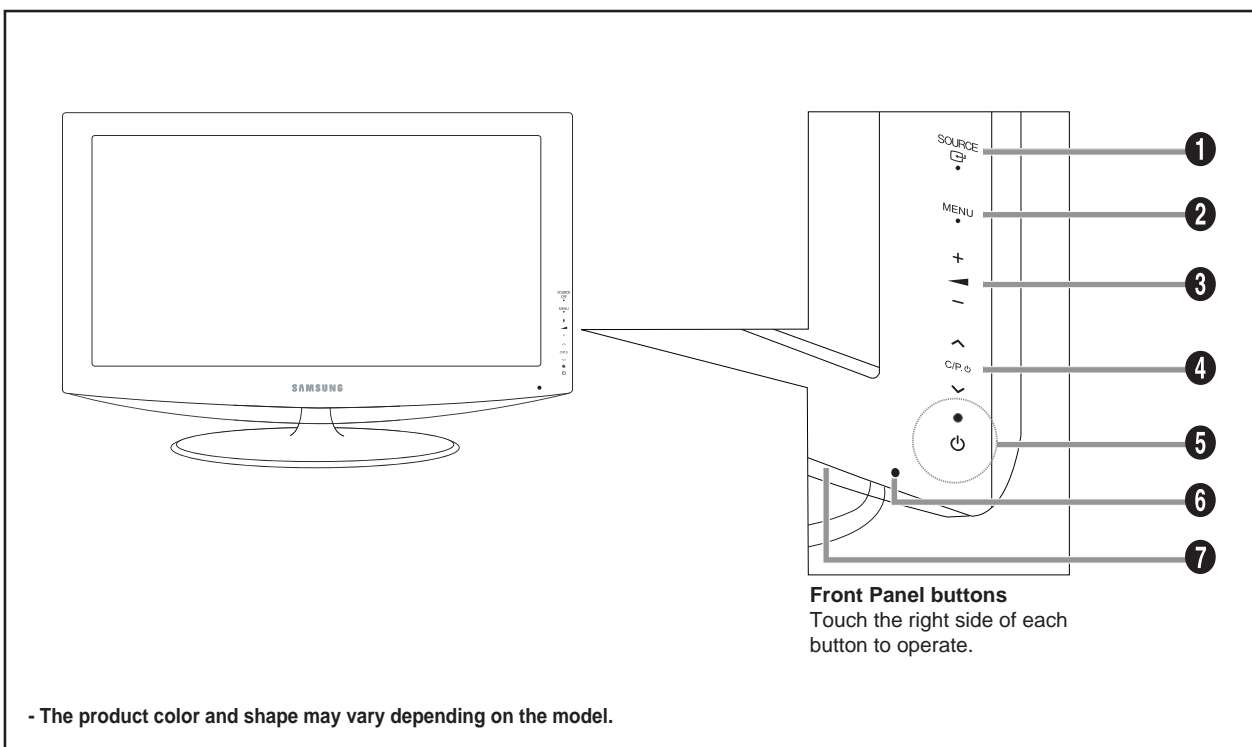


10 Operating Instructions and Installation

10-1 Front



1. SOURCE

Toggles between all the available input sources (TV, Ext.1, Ext.2, AV, S-Video, Component, PC, HDMI1, HDMI2, DTV). In the on-screen menu, use this button as you use the **ENTER/OK** button on the remote control. (LE23R86BD/LE26R86BD)




Toggles between all the available input sources (TV, Ext.1, Ext.2, AV, S-Video, Component, PC, HDMI1, HDMI2, HDMI3, DTV). In the on-screen menu, use this button as you use the **ENTER/OK** button on the remote control. (LE32R86BD/LE37R86BD/LE40R86BD)

Toggles between all the available input sources (TV, Ext.1, Ext.2, AV, S-Video, Component, PC, HDMI1, HDMI2, HDMI3). In the on-screen menu, use this button as you use the **ENTER/OK** button on the remote control. (LE32R81BX/LE37R81BX/LE40R81BX)




2. MENU

Press to see an on-screen menu of your TV's features. In case of DTV mode, the DTV menu appears.

3. + -

Press to decrease or increase the volume. In the on-screen menu, use the +  - buttons as you use the  and  buttons on the remote control.

4. < C/P. >

Press to change channels. In the on-screen menu, use the < C/P.  > buttons as you use the  and  buttons on the remote control. (Without the Remote Control, you can turn on the TV by using the Channel buttons.)

5. (Power)

Press to turn the TV on and off.

Power Indicator

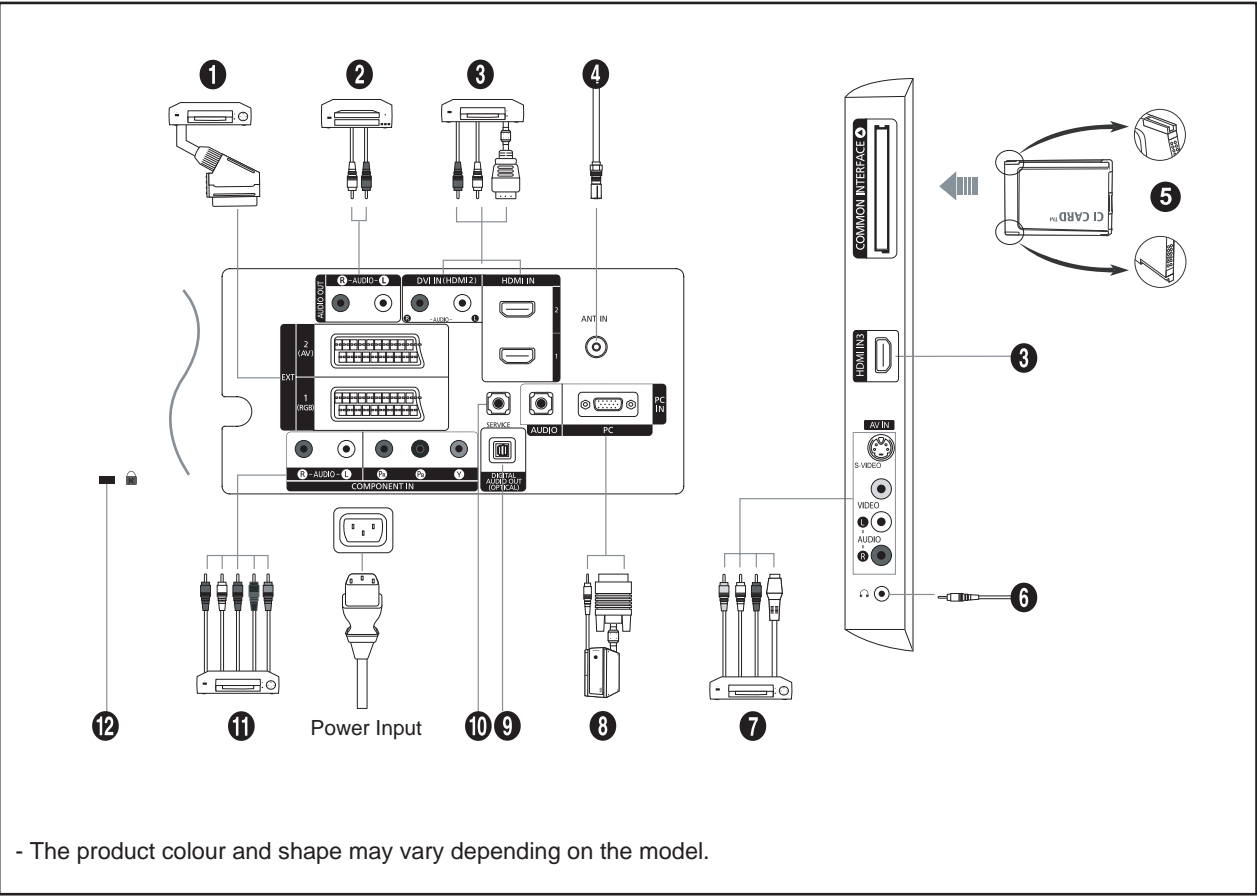
Blinks and turns off when the power is on and lights up in stand-by mode.

6. Remote Control Sensor

Aim the remote control towards this spot on the TV.

7. Speakers

10-2 LE23R86BD/LE26R86BD/LE32R86BD/LE37R86BD/LE40R86BD
Viewing the Connection Panel



- Whenever you connect an external device to your TV, make sure that power on the unit is turned off.
- When connecting an external device, match the colour of the connection terminal to the cable.

1. Connecting Set-Top Box, VCR or DVD

Connector	Input			Output
	Video	Audio (L/R)	RGB	Video + Audio (L/R)
EXT 1	✓	✓	✓	Only TV or DTV output is available.
EXT 2	✓	✓		Output you can choose.

- Inputs or outputs for external devices, such as VCR, DVD, video game device or video disc players.

2. Connecting AUDIO

- Connect RCA audio cables to "R - AUDIO - L" on the rear of your set and the other ends to corresponding audio in connectors on the Amplifier or DVD Home Theater.

3. HDMI IN 1, HDMI IN 2, HDMI IN 3(Only LE32R86BD/LE37R86BD/LE40R86BD)

- Supports connections between HDMI-connection-enabled AV devices (Set-Top Boxes, DVD players, AV receivers and digital TVs).

- No additional Audio connection is needed for an HDMI to HDMI connection.

► **What is HDMI?**

- "High Definition Multimedia interface" allows the transmission of high definition digital video data and multiple channels of digital audio (5.1 channels).
- The HDMI/DVI terminal supports DVI connection to an extended device with the appropriate cable (not supplied). The difference between HDMI and DVI is that the HDMI device is smaller in size, has the HDCP (High Bandwidth Digital Copy Protection) coding feature installed, and supports multi - channel digital audio.

DVI IN (HDMI 2) (AUDIO R/L)

- When connecting this product via HDMI or DVI to a Set Top Box, DVD Player or Games Console etc, make sure that it has been set to a compatible video output mode as shown in the table below. Failure to observe this may result in picture distortion, image breakup or no picture.

- When using an HDMI/DVI cable connection, it is only possible from the HDMI 2 terminal.

- You should use the DVI-to-HDMI cable or DVI-HDMI Adapter for the connection, and the "R - AUDIO - L" terminal on DVI for sound output.

- Supported modes for HDMI/DVI and Component

	480i	480p	576i	576p	720p	1080i
HDMI/DVI 50Hz	X	X	X	O	O	O
HDMI/DVI 60Hz	X	O	X	X	O	O
Component	O	O	O	O	O	O

4. Connecting an Aerial or Cable Television Network

To view television channels correctly, a signal must be received by the set from one of the following sources:

- An outdoor aerial / A cable television network / A satellite network

5. Connecting CI (Common Interface) CARD

- When not inserting "CI CARD" in some channels, "Scrambled Signal" is displayed on the screen.
- The pairing information containing a telephone number, CI CARD ID, Host ID and other information will be displayed in about 2~3 minutes. If an error message is displayed, please contact your service provider.
- When the channel information configuration has finished, the message "Updating Completed" is displayed, indicating that the channel list is now updated.
- You must obtain a CI CARD from a local cable service provider.
- Remove the CI CARD by carefully pulling it out with your hands since dropping the CI CARD may cause damage to it.
- Insert the CI-Card in the direction marked on it.

7. Connecting External A/V Devices

- Connect RCA or S-VIDEO cable to an appropriate external A/V device such as VCR, DVD or Camcorder.
- Connect RCA audio cables to "R - AUDIO - L" on the rear of your set and the other ends to corresponding audio out connectors on the A/V device.
- Headphone may be connected to the headphone output (6) on the rear of your set. While the headphone is connected, the sound from the built-in speakers will be disabled.

8. Connecting Computer

- Connect the D- Sub cable (optional) to "PC (PC IN)" on the rear of your set and the other end to the Video Card of your computer.
- Connect the stereo audio cable (optional) to "AUDIO (PC IN)" on the rear of your set and the other end to "Audio Out" of the sound card on your computer.

9. DIGITAL AUDIO OUT (OPTICAL)

- Connect to a Digital Audio Component.

10. SERVICE

- Service connection for qualified service engineer.

10 Operating Instructions and Installation

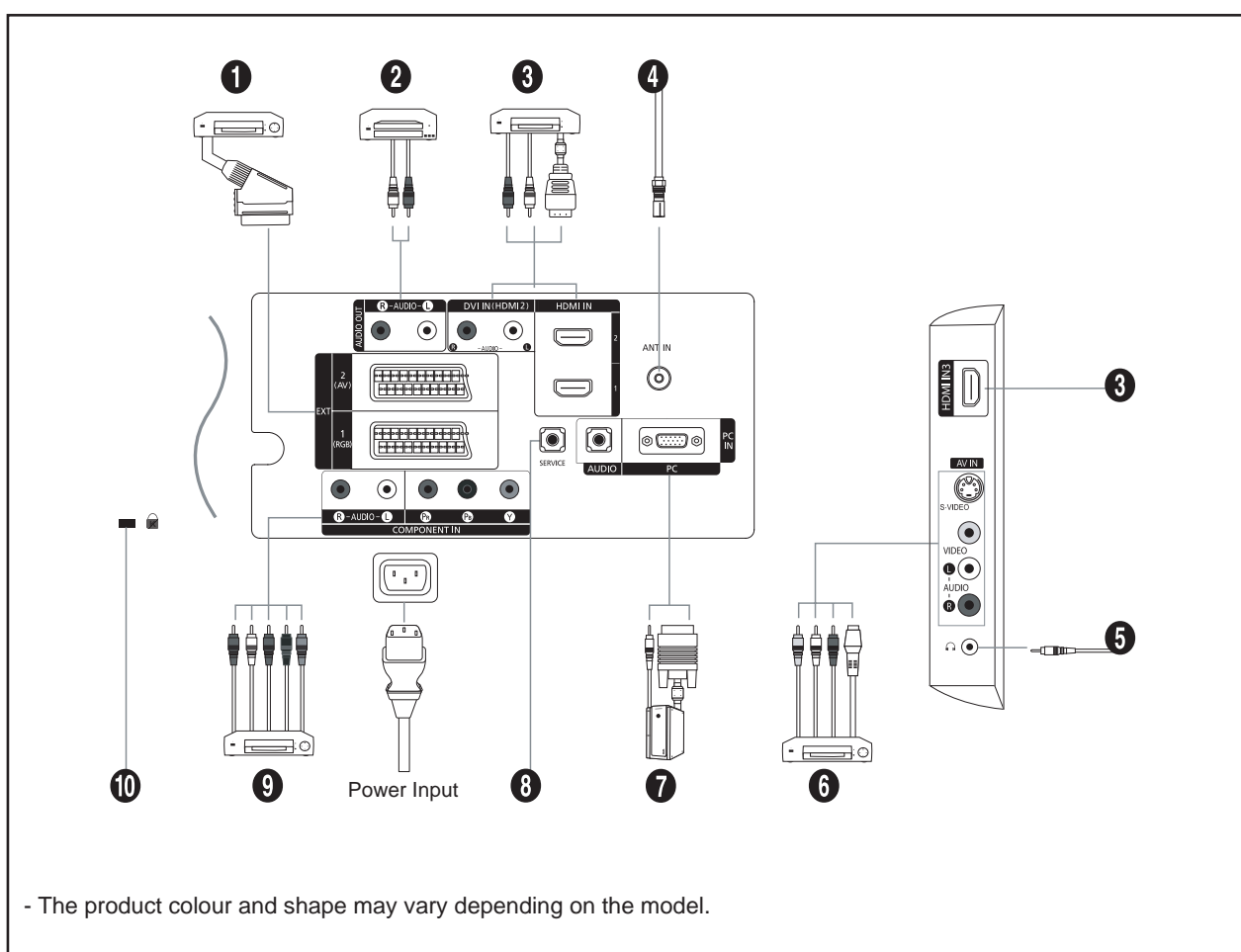
11. Connecting Component Devices (DTV/DVD)

- Connect component video cables (optional) to component connector ("Pr", "Pb", "Y") on the rear of your set and the other ends to corresponding component video out connectors on the DTV or DVD.
- If you wish to connect both the Set-Top Box and DTV (or DVD), you should connect the Set-Top Box to the DTV (or DVD) and connect the DTV (or DVD) to component connector ("Pr", "Pb", "Y") on your set.
- The PR, PB and Y connectors on your component devices (DTV or DVD) are sometimes labeled Y, B-Y and R-Y or Y, Cb and Cr.
- Connect RCA audio cables (optional) to "R - AUDIO - L" on the rear of your set and the other ends to corresponding audio out connectors on the DTV or DVD.
- This LCD TV displays its optimum picture resolution in 720p mode.
- This LCD TV displays its maximum picture resolution in 1 080i mode.

12. Kensington Lock

- The Kensington lock (optional) is a device used to physically fix the system when used in a public place.
- If you want to use a locking device, contact the dealer where you purchased the TV.
- The place of the Kensington Lock may be different depending on its model.

10-3 LE32R81BX/LE37R81BX/LE40R81BX Viewing the Connection Panel



- Whenever you connect an external device to your TV, make sure that power on the unit is turned off.
- When connecting an external device, match the colour of the connection terminal to the cable.

1. Connecting Set-Top Box, VCR or DVD

Connector	Input			Output
	Video	Audio (L/R)	RGB	Video + Audio (L/R)
EXT 1	O	O	O	Only TV output is available.
EXT 2	O	O		Output you can choose.

- Inputs or outputs for external devices, such as VCR, DVD, video game device or video disc players.

2. Connecting AUDIO

- Connect RCA audio cables to "R - AUDIO - L" on the rear of your set and the other ends to corresponding audio in connectors on the Amplifier or DVD Home Theater.

3. HDMI IN 1, HDMI IN 2, HDMI IN 3

- Supports connections between HDMI-connection-enabled AV devices (Set-Top Boxes, DVD players, AV receivers and digital TVs).
- No additional Audio connection is needed for an HDMI to HDMI connection.
- What is HDMI?
 - "High Definition Multimedia interface" allows the transmission of high definition digital video data and multiple channels of digital audio (5.1 channels).
 - The HDMI/DVI terminal supports DVI connection to an extended device with the appropriate cable (not supplied). The difference between HDMI and DVI is that the HDMI device is smaller in size, has the HDCP (High Bandwidth Digital Copy Protection) coding feature installed, and supports multi - channel digital audio.

DVI IN (HDMI 2) (AUDIO R/L)

- When connecting this product via HDMI or DVI to a Set Top Box, DVD Player or Games Console etc, make sure that it has been set to a compatible video output mode as shown in the table below. Failure to observe this may result in picture distortion, image breakup or no picture.
- When using an HDMI/DVI cable connection, it is only possible from the HDMI 2 terminal.
- You should use the DVI-to-HDMI cable or DVI-HDMI Adapter for the connection, and the "R - AUDIO - L" terminal on DVI for sound output.
- Supported modes for HDMI/DVI and Component

	480i	480p	576i	576p	720p	1080i
HDMI/DVI 50Hz	X	X	X	O	O	O
HDMI/DVI 60Hz	X	O	X	X	O	O
Component	O	O	O	O	O	O

4. Connecting an Aerial or Cable Television Network

- To view television channels correctly, a signal must be received by the set from one of the following sources:
- An outdoor aerial / A cable television network / A satellite network

6. Connecting External A/V Devices

- Connect RCA or S-VIDEO cable to an appropriate external A/V device such as VCR, DVD or Camcorder.
- Connect RCA audio cables to "R - AUDIO - L" on the rear of your set and the other ends to corresponding audio out connectors on the A/V device.
- Headphone may be connected to the headphone output (5) on the rear of your set. While the headphone is connected, the sound from the built-in speakers will be disabled.

7. Connecting Computer

- Connect the D- Sub cable (optional) to "PC (PC IN)" on the rear of your set and the other end to the Video Card of your computer.
- Connect the stereo audio cable (optional) to "AUDIO (PC IN)" on the rear of your set and the other end to "Audio Out" of the sound card on your computer.

8. SERVICE

- Service connection for qualified service engineer.

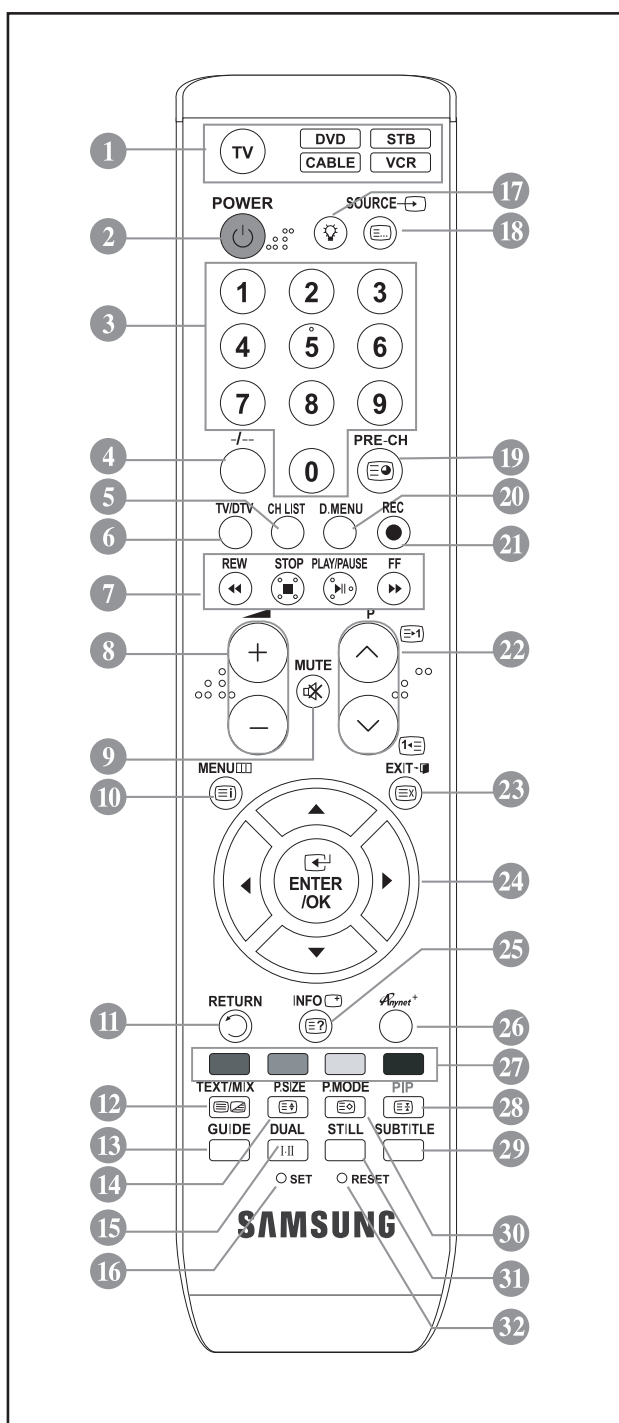
9. Connecting Component Devices (DTV/DVD)

- Connect component video cables (optional) to component connector ("PR", "PB", "Y") on the rear of your set and the other ends to corresponding component video out connectors on the DTV or DVD.
- If you wish to connect both the Set-Top Box and DTV (or DVD), you should connect the Set-Top Box to the DTV (or DVD) and connect the DTV (or DVD) to component connector ("PR", "PB", "Y") on your set.
- The PR, PB and Y connectors on your component devices (DTV or DVD) are sometimes labeled Y, B-Y and R-Y or Y, Cb and Cr.
- Connect RCA audio cables (optional) to "R - AUDIO - L" on the rear of your set and the other ends to corresponding audio out connectors on the DTV or DVD.
- This LCD TV displays its optimum picture resolution in 720p mode.
- This LCD TV displays its maximum picture resolution in 1080i mode.

10. Kensington Lock

- The Kensington lock (optional) is a device used to physically fix the system when used in a public place.
- If you want to use a locking device, contact the dealer where you purchased the TV.
- The place of the Kensington Lock may be different depending on its model.

10-4 LE23R86BD/LE26R86BD Remote Control



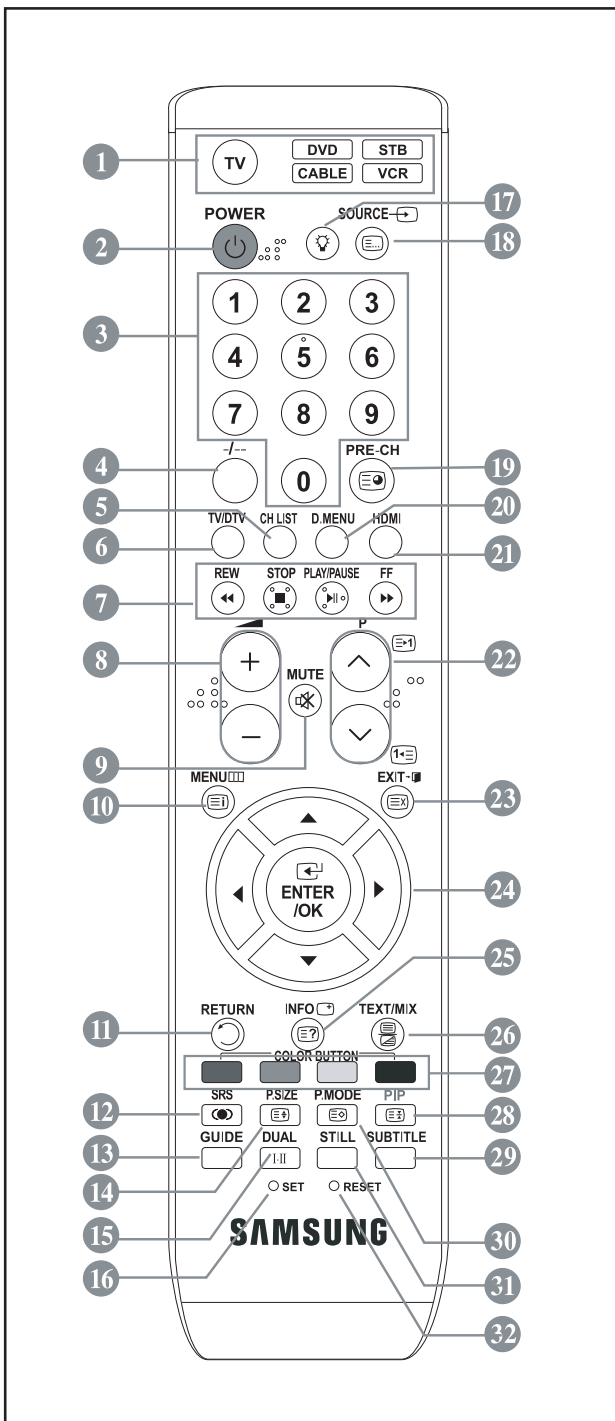
1. Selects a target device to be controlled by the Samsung remote control (TV, DVD, STB, CABLE, VCR)
2. Television Standby button
3. Number buttons for direct channel access
4. One/Two-digit channel selection
5. It display "Channel List" on the screen.
6. Selects the TV mode directly
7. VCR/DVD Functions
Rewind, Stop, Play/Pause, Fast/Forward
8. + Volume increase
- Volume decrease
9. Temporary sound switch-off
10. Menu display and change confirmation
11. Returns to the previous menu
12. SRS TS XT selection
13. Electronic Program Guide (EPG) display
14. Picture size selection
15. Sound effect selection
16. Adjusts 5 separate devices - TV, DVD, STB, CABLE, or VCR.
17. When pressing this button, a number of buttons on the remote control (e.g. Selects a target device, volume, channel and MUTE buttons) light up for a few seconds and then turn off to save power. This function is to conveniently use the remote control at night or when dark.
18. Available source selection
19. Previous channel
20. DTV menu display
21. Records for Live Broadcasting
22. P (Next channel)
P (Previous channel)
23. Exit the OSD
24. Control the cursor in the menu
25. Use to see information on the current broadcast
27. Colour buttons :
Press to add or delete channels and to store channels to the favorite channel list in the "Channel List" menu.
28. Picture-In-Picture On / Off
29. Digital subtitle display
30. Picture effect selection
31. Picture freeze
32. When your remote does not work, change the batteries and press the "RESET" button for 2-3 seconds before use.

Teletext Functions

6. Exit from the teletext display
10. Teletext index
14. Teletext size selection
18. Teletext mode selection (LIST/FLOF)
19. Teletext sub page
22. P (Teletext next page)
P (Teletext previous page)
23. Teletext cancel
25. Teletext reveal
26. Alternately select Teletext, Double, or Mix.
27. Fastext topic selection
28. Teletext hold
30. Teletext store

- The performance of the remote control may be affected by bright light.
- This is a special remote control for the visually impaired, and has Braille points on the Power, Channel, STOP, PLAY/PAUSE and Volume buttons.

10-5 LE32R86BD/LE37R86BD/LE40R86BD Remote Control



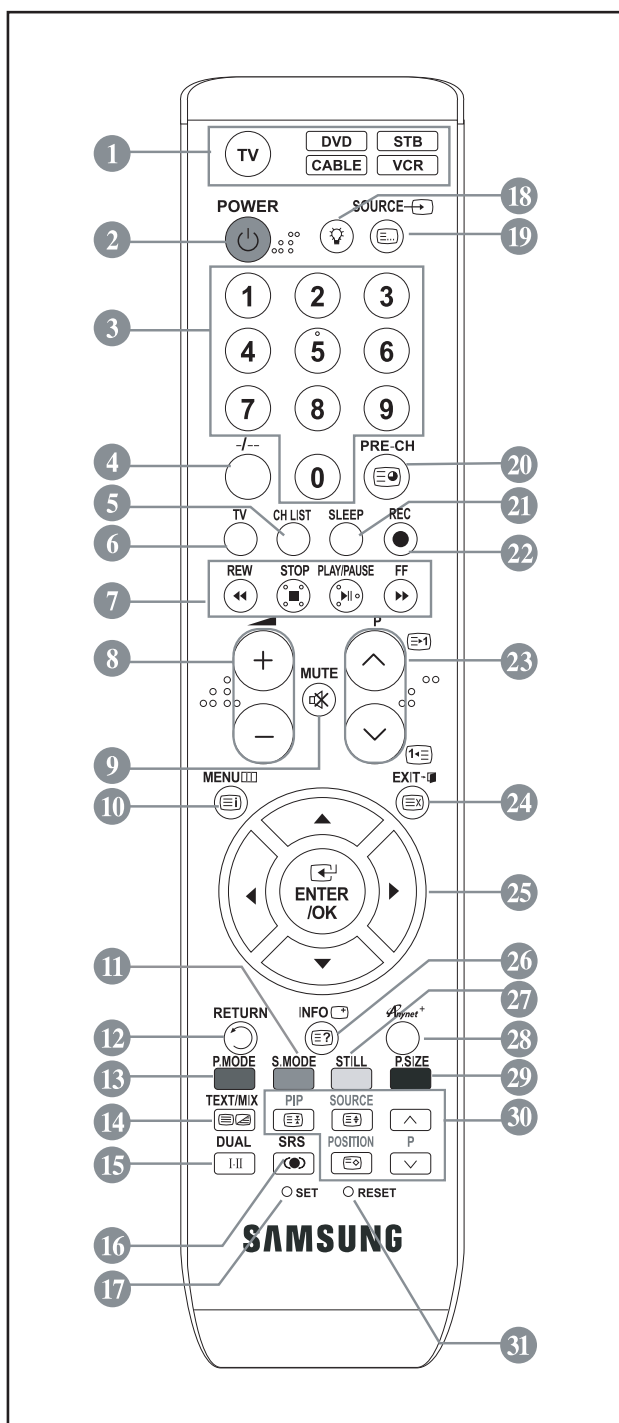
1. Selects a target device to be controlled by the Samsung remote control (TV, DVD, STB, CABLE, VCR)
2. Television Standby button
3. Number buttons for direct channel access
4. One/Two-digit channel selection
5. It display "Channel List" on the screen.
6. Selects the TV mode directly
7. VCR/DVD Functions
Rewind, Stop, Play/Pause, Fast/Forward
8. + Volume increase
- Volume decrease
9. Temporary sound switch-off
10. Menu display and change confirmation
11. Returns to the previous menu
12. SRS TS XT selection
13. Electronic Program Guide (EPG) display
14. Picture size selection
15. Sound effect selection
16. Adjusts 5 separate devices - TV, DVD, STB, CABLE, or VCR.
17. When pressing this button, a number of buttons on the remote control (e.g. Selects a target device, volume, channel and MUTE buttons) light up for a few seconds and then turn off to save power. This function is to conveniently use the remote control at night or when dark.
18. Available source selection
19. Previous channel
20. DTV menu display
21. Selects the HDMI mode directly.
22. P : Next channel
P : Previous channel
23. Exit the OSD
24. Control the cursor in the menu
25. Use to see information on the current broadcast
27. Colour buttons :
Press to add or delete channels and to store channels to the favorite channel list in the "Channel List" menu.
28. Picture-In-Picture On / Off
29. Digital subtitle display
30. Picture effect selection
31. Picture freeze
32. When your remote does not work, change the batteries and press the "RESET" button for 2-3 seconds before use.

Teletext Functions

6. Exit from the teletext display
10. Teletext index
14. Teletext size selection
18. Teletext mode selection (LIST/FLOF)
19. Teletext sub page
22. P : Teletext next page
P : Teletext previous page
23. Teletext cancel
25. Teletext reveal
26. Alternately select Teletext, Double, or Mix.
27. Fastext topic selection
28. Teletext hold
30. Teletext store

- The performance of the remote control may be affected by bright light.
- This is a special remote control for the visually impaired, and has Braille points on the Power, Channel, STOP, PLAY/PAUSE and Volume buttons.

10-6 LE32R81BX/LE37R81BX/LE40R81BX Remote Control



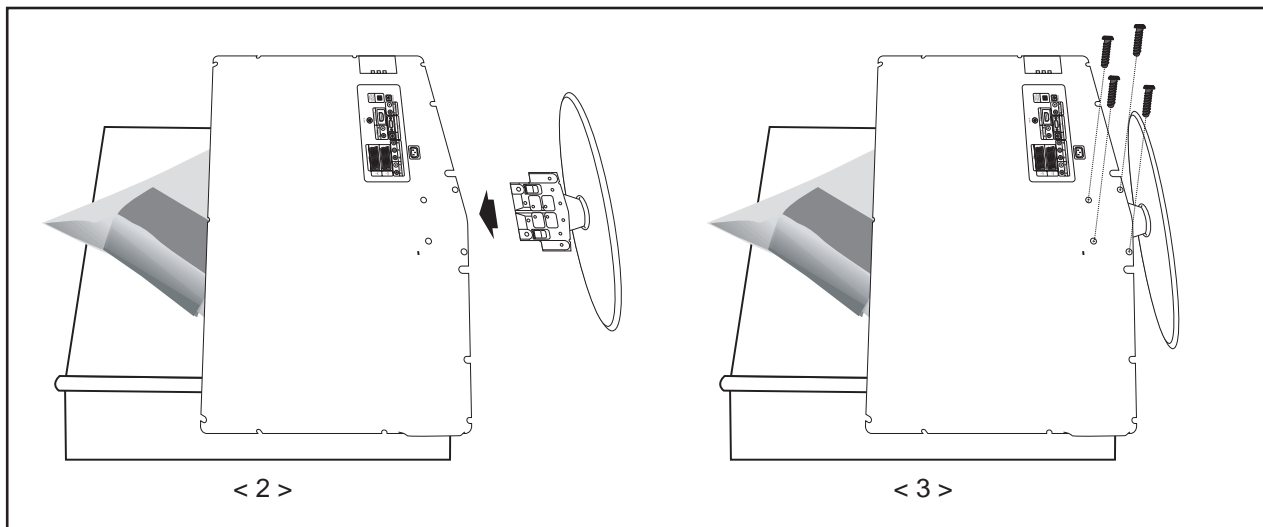
1. Selects a target device to be controlled by the Samsung remote control (TV, DVD, STB, CABLE, VCR)
2. Television Standby button
3. Number buttons for direct channel access
4. One/Two-digit channel selection
5. It display "Channel List" on the screen.
6. Selects the TV mode directly
7. VCR/DVD Functions
Rewind, Stop, Play/Pause, Fast/Forward
8. + Volume increase
- Volume decrease
9. Temporary sound switch-off
10. Menu display and change confirmation
11. Returns to the previous menu
12. Returns to the previous menu
13. Picture effect selection
15. Sound effect selection
16. SRS TS XT selection
17. Adjusts 5 separate devices -TV, DVD, STB, CABLE, or VCR.
18. When pressing this button, a number of buttons on the remote control (e.g. Selects a target device, volume, channel and MUTE buttons) light up for a few seconds and then turn off to save power. This function is to conveniently use the remote control at night or when dark.
19. Available source selection
20. Previous channel
20. DTV menu display
21. Automatic Power-off
22. Records for Live (Anynet+ function only)
23. P : Next channel
P : Previous channel
24. Exit the OSD
25. Control the cursor in the menu
26. Use to see information on the current broadcast
27. Picture size selection
28. Runs the Anynet view functions and sets up Anynet devices. Please refer to the Anynet Owner's Instruction.
29. Picture size selection
30. PIP:Picture-In-Picture On/Off
SOURCE: Input source selection
POSITION: PIP position selection
31. When your remote does not work, change the batteries and press the "RESET" button for 2-3 seconds before use.

Teletext Functions

6. Exit from the teletext display
10. Teletext index
14. Alternately select Teletext, Double, or Mix.
19. Teletext mode selection (LIST/FLOF)
20. Teletext sub page
23. P : Teletext next page
P : Teletext previous page
24. Teletext cancel
26. Teletext reveal
- 11, 13, 27, 29 Fastext topic selection
30. PIP:Teletext Hold
30. SOURCE: Teletext Store
30. POSITION: Teletext size selection

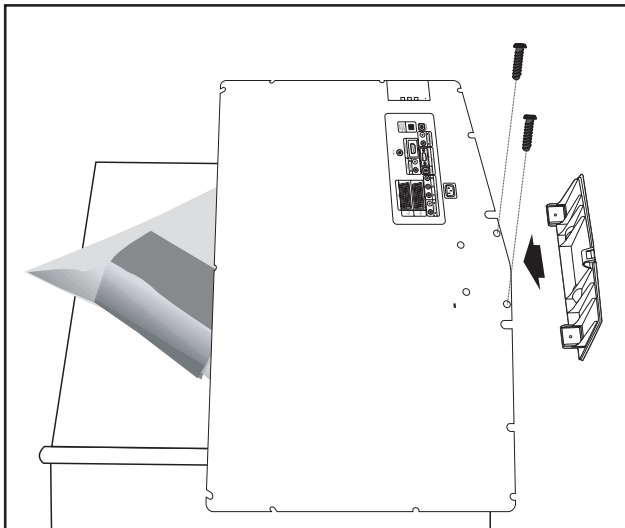
- The performance of the remote control may be affected by bright light.
- This is a special remote control for the visually impaired, and has Braille points on the Power, Channel, STOP, PLAY/PAUSE and Volume buttons.

10-7 Installing the Stand



1. Place the TV faced down on a soft cloth or cushion on a table.
2. Put the stand into the hole at the bottom of the TV.
3. Insert screw into the hole indicated and tighten.
 - ▶ The stand is installed for models with the screen size of 37 inch and above.

10-8 Installing the Wall Mount Kit



Wall mount items (sold separately) allow you to mount the TV on the wall.

For detailed information on installing the wall mount, see the instructions provided with the Wall Mount items. Contact a technician for assistance when installing the wall mounted bracket.

Samsung Electronics is not responsible for any damage to the product or injury to yourself or others if you elect to install the TV on your own.

- ▶ Remove the stand and cover the bottom hole with a cap and fasten with two screws.