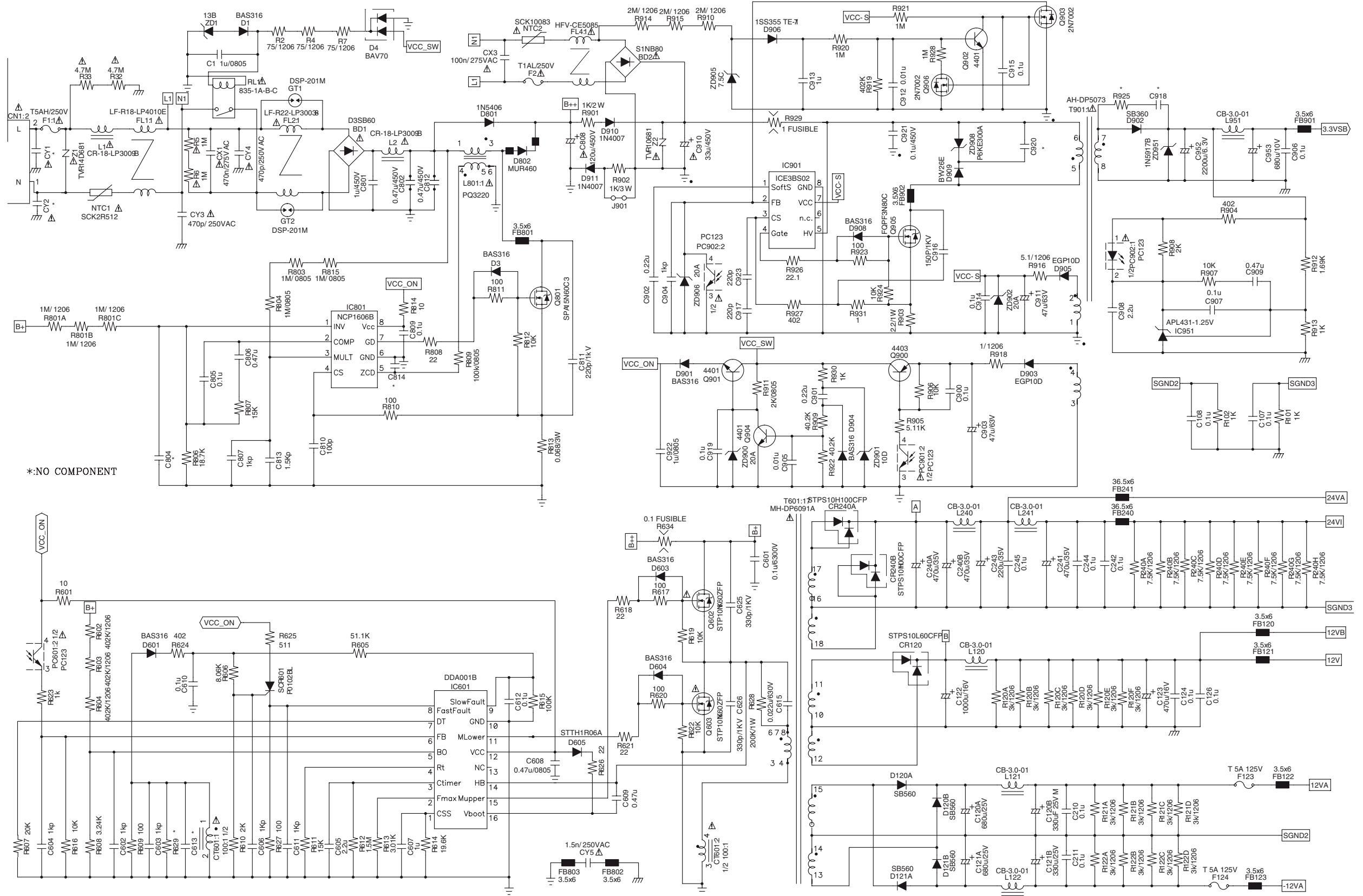
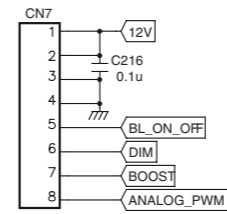
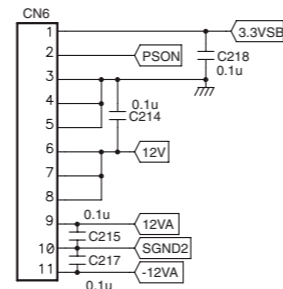
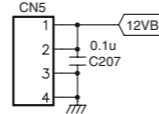
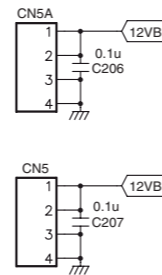
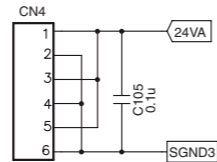
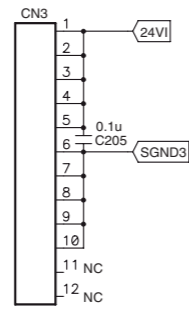
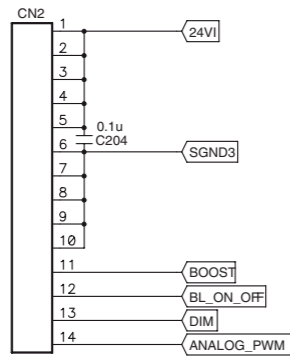
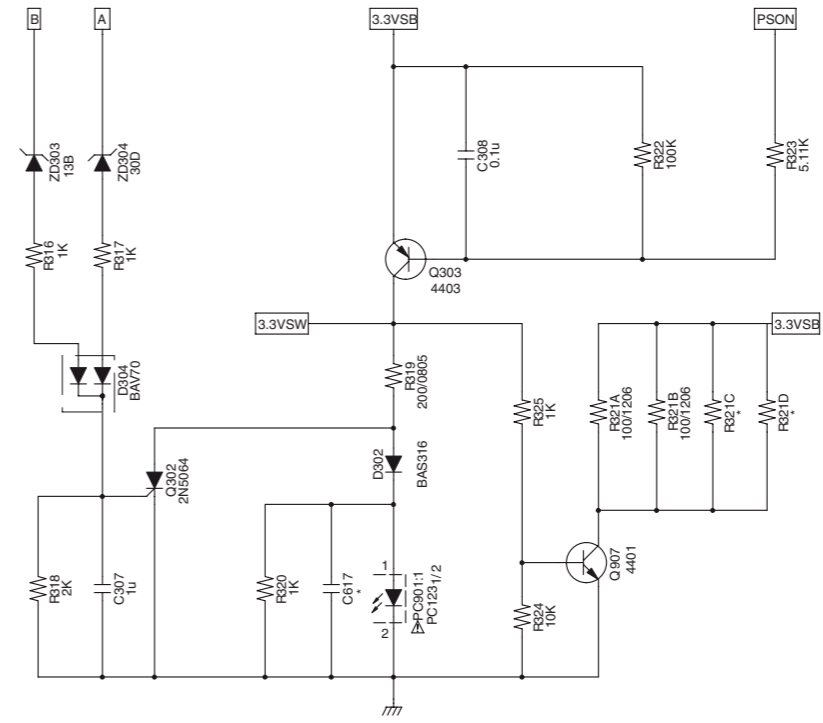
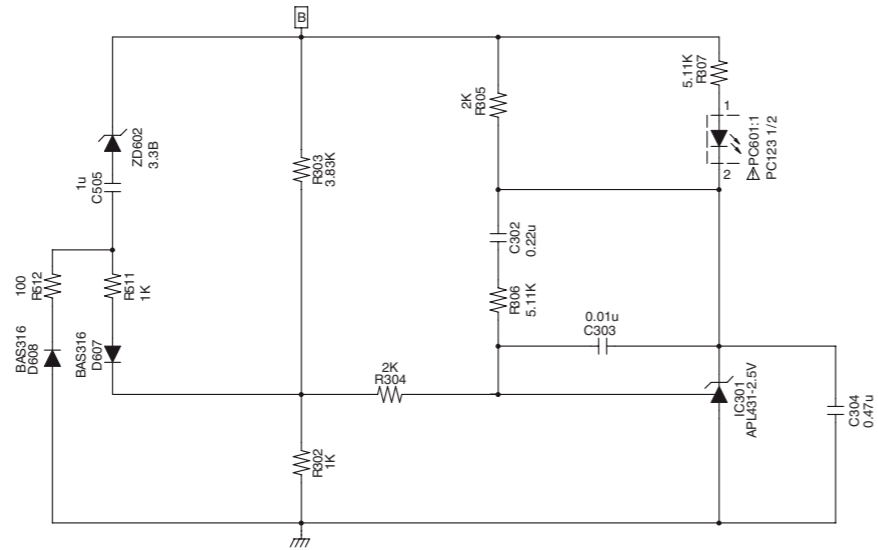


DPS-182CP





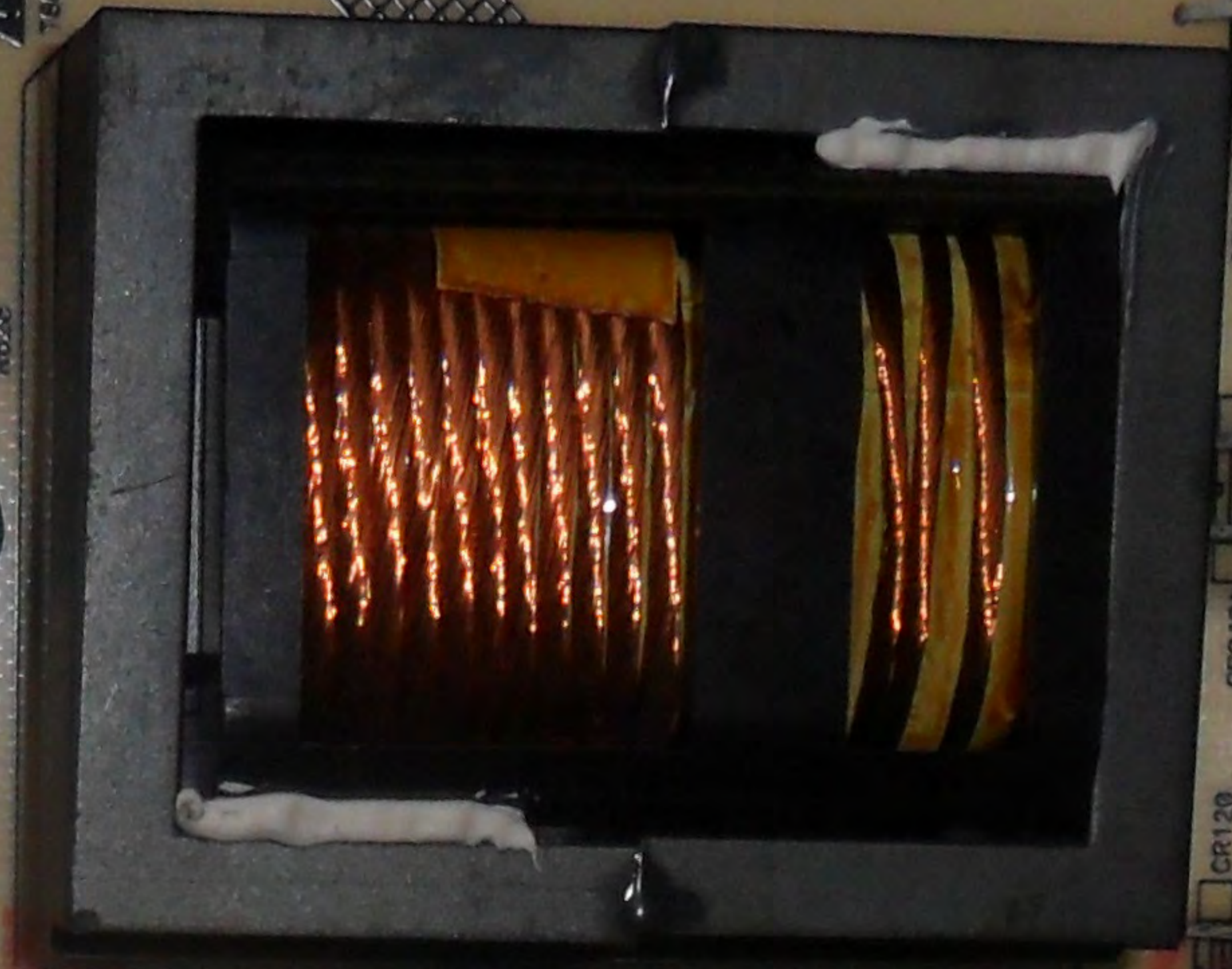
EL B45 1 L07B 0082738
S 310610806572



TÜV
Rheinland
Product Safety

BAUART
GEPRÜFT

TYPE
APPROVED



ATTENTION
PRIMARY PARTS

CAUTION:
FOR CONTINUED PROTECTION
AGAINST RISK OF FIRE,
REPLACE ONLY WITH SAME
TYPE AND RATING OF FUSE.

DPS-182CP
DESIGN IN TAIWAN
MADE IN CHINA DCWP

24V	4.8A
24VA	8.8A
3.3V5B	0.2A
12V5SB	2.7A
12VB	1.7A
+12VA	0.45A
-12VA	0.45A
Total power not exceed 201W	

6900L-0217F
FLUORESCENT L
PLEASE FOLLOW

19/09/2013

2950197308

WANNIEN
▲101V0
(94V0)
E88653 0032

← SECONDARY

→ PRIMARY

1

C244
C242
C205
R240F
R240G
R240H
R240E
R240D
R240C
R240B
R240A
C204

18
17
16
15
14
13
12
11
10

3
4
6
7
8

C613
R629
1
2
4
3

R622
R620 R621
D604

6
5
4
1
3

C1
D1
ZD1
R2
R4
R7
D4

R120A
R120B
R120C
R120D
R120F
R120E
C124
C126

C303 &3
C302
C304
R305
R307

J22
R306 &3
R304
R303
ZD602 &4

C610
C603
R609
R614
C607
R612
C605
R611
R623
IC601
R605
C612
R615
R601
C608
R604
R602

R302 C505
D607 R511
D608 R512
&4

&5
C604
R616
C606
R607
R610
C611
R627
R608

D901
C922
Q904
C905
R922
R909
D904
C919
ZD900
Q900
C900
Q900
ZD901

Q901
R905 R911
&1 R906

R928 C915
Q903 Q906

R920
Q902
R921
C912
R919
ZD906
C902
C904
&7
IC901
C923

R924
R923
D908
R926

&7 C917
R931 R927

R618
R619
R617
D603

R815
R803
R804

R811
R812
R809
C814
R801A
R801B
R806
&2
R814
C804

R910
R915
ZD905
D906

#4 R321D
R321C
R321B
R321A
Q907 R320
C617
R325
R324

IC951
R912
C909
C907
R904
R925

19/09/2013

ATTENTION
PRIMARY PARTS

