

Power Supply CBA Schematic Diagram

CAUTION !

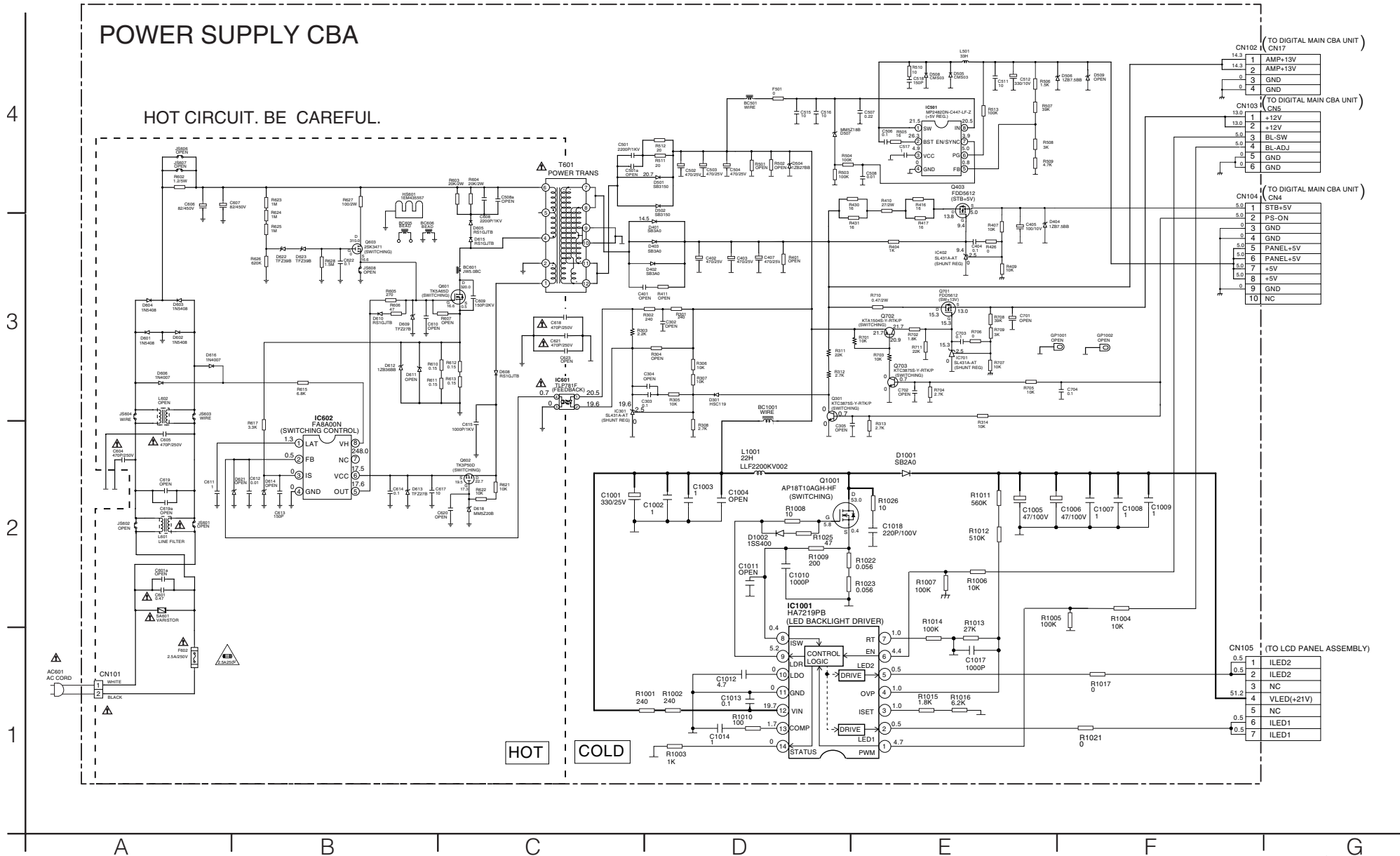
For continued protection against fire hazard, replace only with the same type fuse.

CAUTION !

Fixed voltage (or Auto voltage selectable) power supply circuit is used in this unit. If Main Fuse (F602) is blown, check to see that all components in the power supply circuit are not defective before you connect the AC plug to the AC power supply. Otherwise it may cause some components in the power supply circuit to fail.

NOTE:

The voltage for parts in hot circuit is measured using hot GND as a common terminal.



CN102 (TO DIGITAL MAIN CBA UNIT)

| | | |
|------|---|---------|
| 14.3 | 1 | AMP+13V |
| 14.3 | 2 | AMP+13V |
| 0 | 3 | GND |
| 0 | 4 | GND |

CN103 (TO DIGITAL MAIN CBA UNIT)

| | | |
|------|---|--------|
| 13.0 | 1 | +12V |
| 13.0 | 2 | +12V |
| 5.0 | 3 | BL-SW |
| 5.0 | 4 | BL-ADJ |
| 0 | 5 | GND |
| 0 | 6 | GND |

CN104 (TO DIGITAL MAIN CBA UNIT)

| | | |
|-----|----|----------|
| 5.0 | 1 | STB+5V |
| 5.0 | 2 | PS-ON |
| 0 | 3 | GND |
| 0 | 4 | GND |
| 5.0 | 5 | PANEL+5V |
| 5.0 | 6 | PANEL+5V |
| 5.0 | 7 | +5V |
| 5.0 | 8 | +5V |
| 0 | 9 | GND |
| 0 | 10 | NC |

CN105 (TO LCD PANEL ASSEMBLY)

| | | |
|------|---|------------|
| 0.5 | 1 | ILED2 |
| 0.5 | 2 | ILED2 |
| 0 | 3 | NC |
| 51.2 | 4 | VLED(+21V) |
| 0 | 5 | NC |
| 0.5 | 6 | ILED1 |
| 0.5 | 7 | ILED1 |

Power Supply CBA Top View

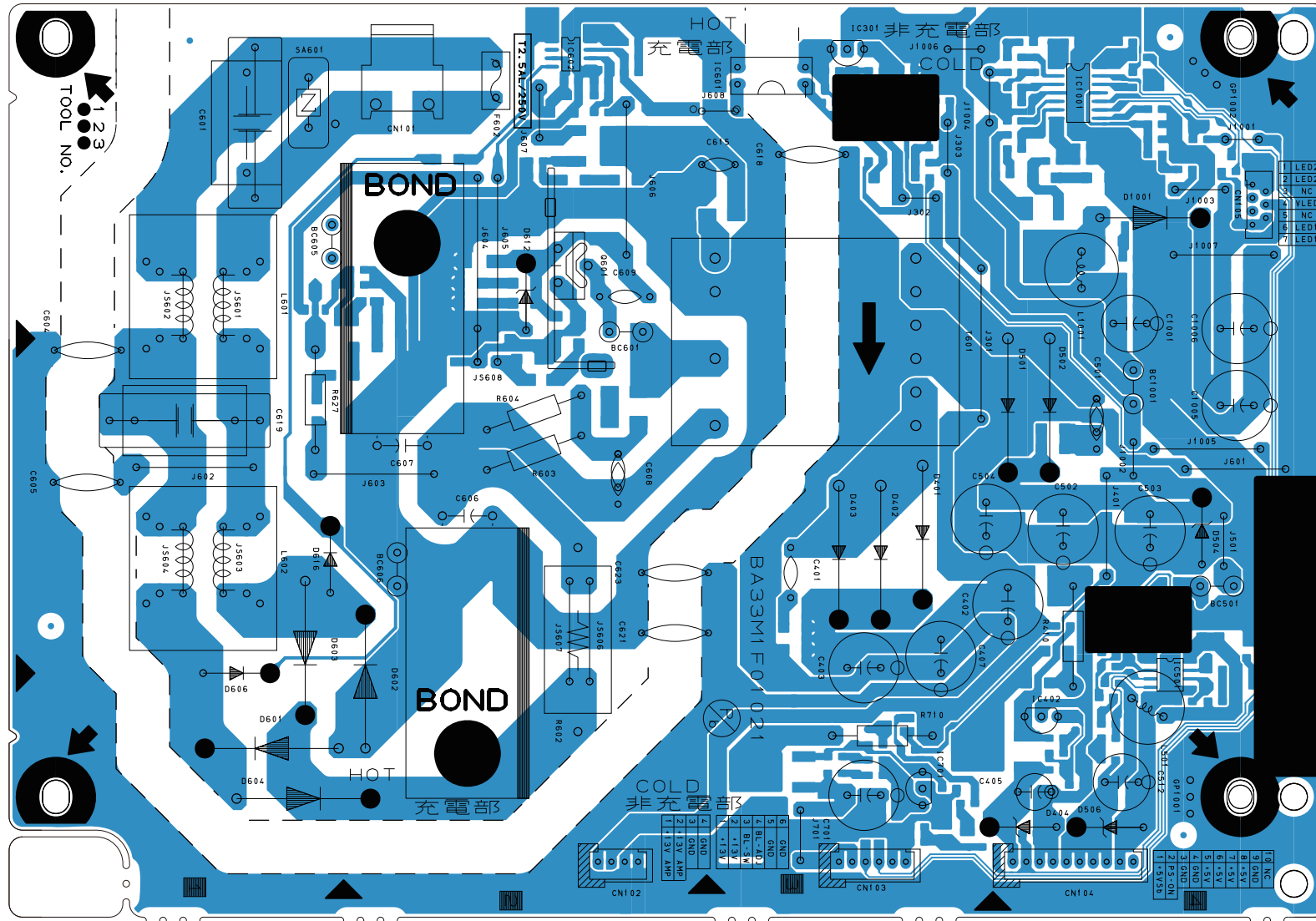
Because a hot chassis ground is present in the power supply circuit, an isolation transformer must be used when repairing. Also, in order to have the ability to increase the input slowly, when troubleshooting this type of power supply circuit, a variable isolation transformer is required.

CAUTION !

Fixed voltage (or Auto voltage selectable) power supply circuit is used in this unit. If Main Fuse (F602) is blown, check to see that all components in the power supply circuit are not defective before you connect the AC plug to the AC power supply. Otherwise it may cause some components in the power supply circuit to fail.

CAUTION !

For continued protection against fire hazard, replace only with the same type fuse.



Power Supply CBA Bottom View

Because a hot chassis ground is present in the power supply circuit, an isolation transformer must be used when repairing. Also, in order to have the ability to increase the input slowly, when troubleshooting this type of power supply circuit, a variable isolation transformer is required.

CAUTION !
Fixed voltage (or Auto voltage selectable) power supply circuit is used in this unit. If Main Fuse (F602) is blown, check to see that all components in the power supply circuit are not defective before you connect the AC plug to the AC power supply. Otherwise it may cause some components in the power supply circuit to fail.

CAUTION !
For continued protection against fire hazard, replace only with the same type fuse.

NOTE:
The voltage for parts in hot circuit is measured using hot GND as a common terminal.

