



Order Code..... **KT94**

PSU REPAIR KIT.....

Models..... Samsung BN44-00167A (Used in LE40M878BX & Similar)

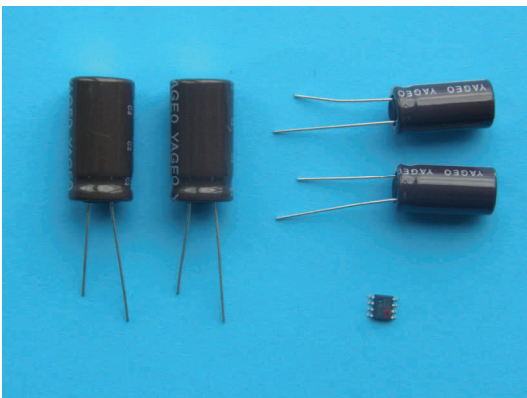
Fault Symptoms..... No Start-Up (Capacitors in secondary swollen)

KIT TIP:

Re-solder transformer T1801

After start-up. Make sure that the screen size and manufacturer is correct by entering service mode.

With the set in stand-by press. INFO-MENU-MUTE-ON. With the remote control



Circuit Reference

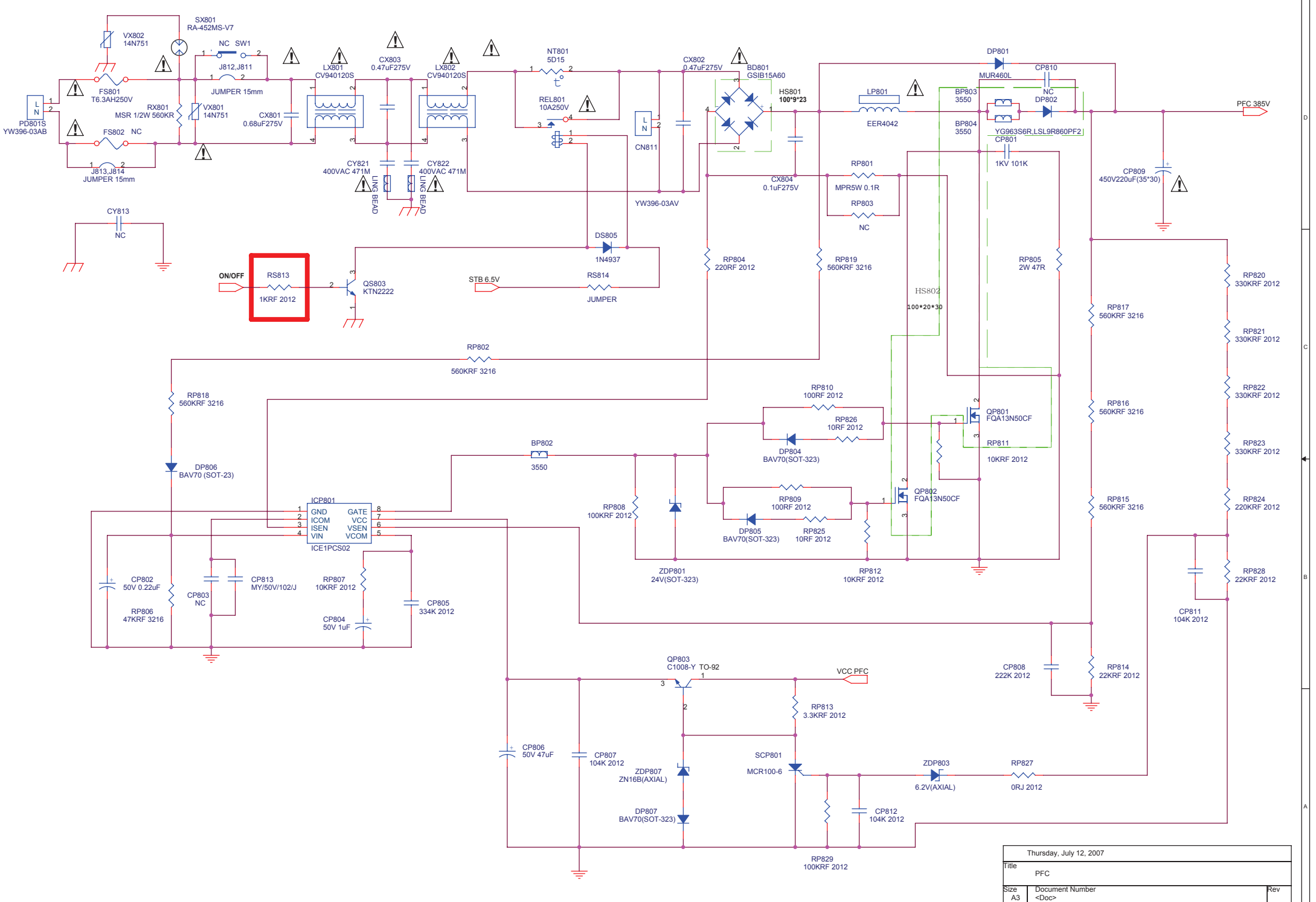
CM880
CM876
CM852
CM853
IC1803

Description

1000UF 25V
1000UF 25V
2200UF 25V
2200UF 25V
EEPROM

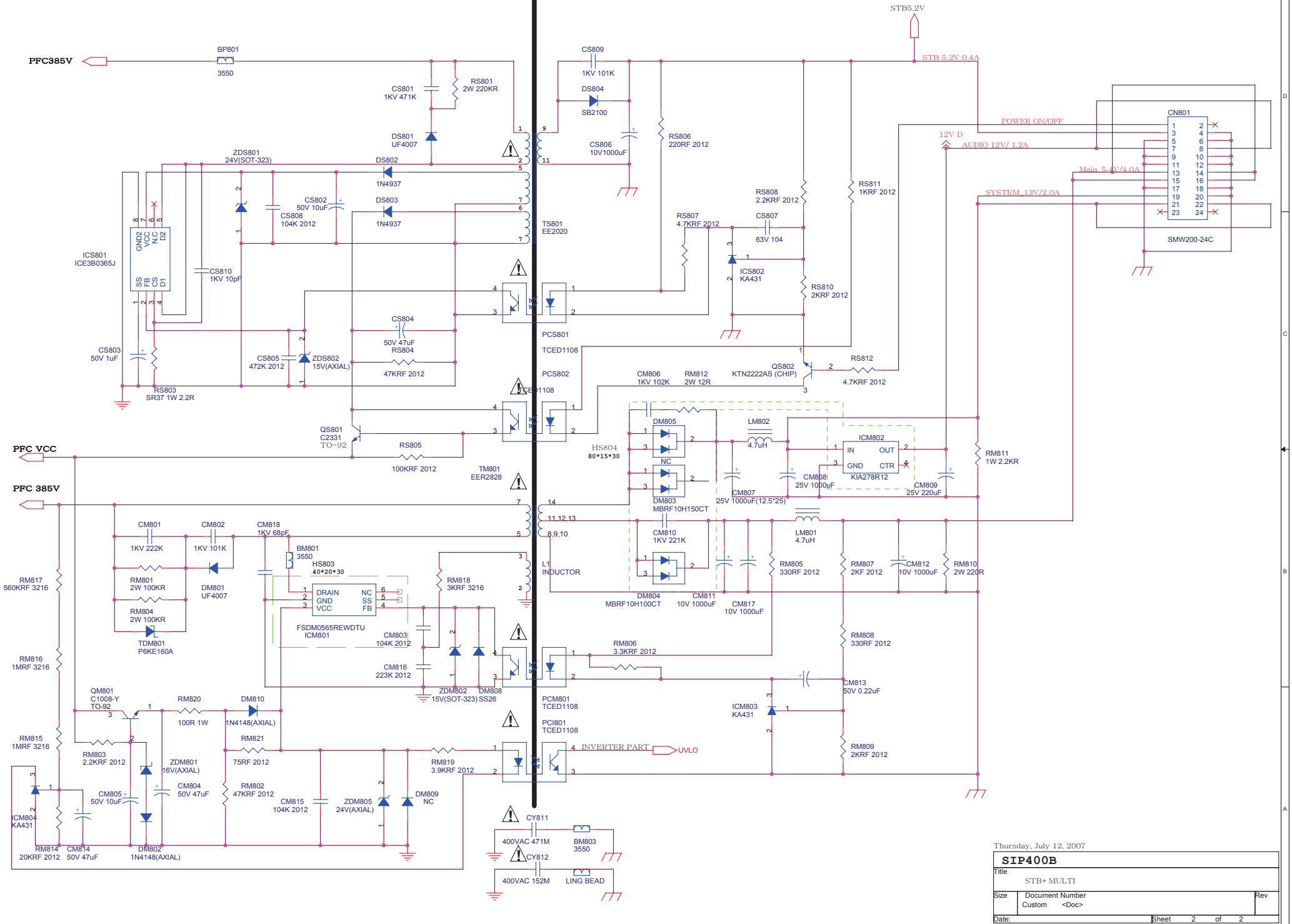
We recommend all kits are fitted by qualified engineers

We accept no responsibility for loss, injury or damage caused by your use of this kit as a successful repair depends on your own skill and fault finding ability.



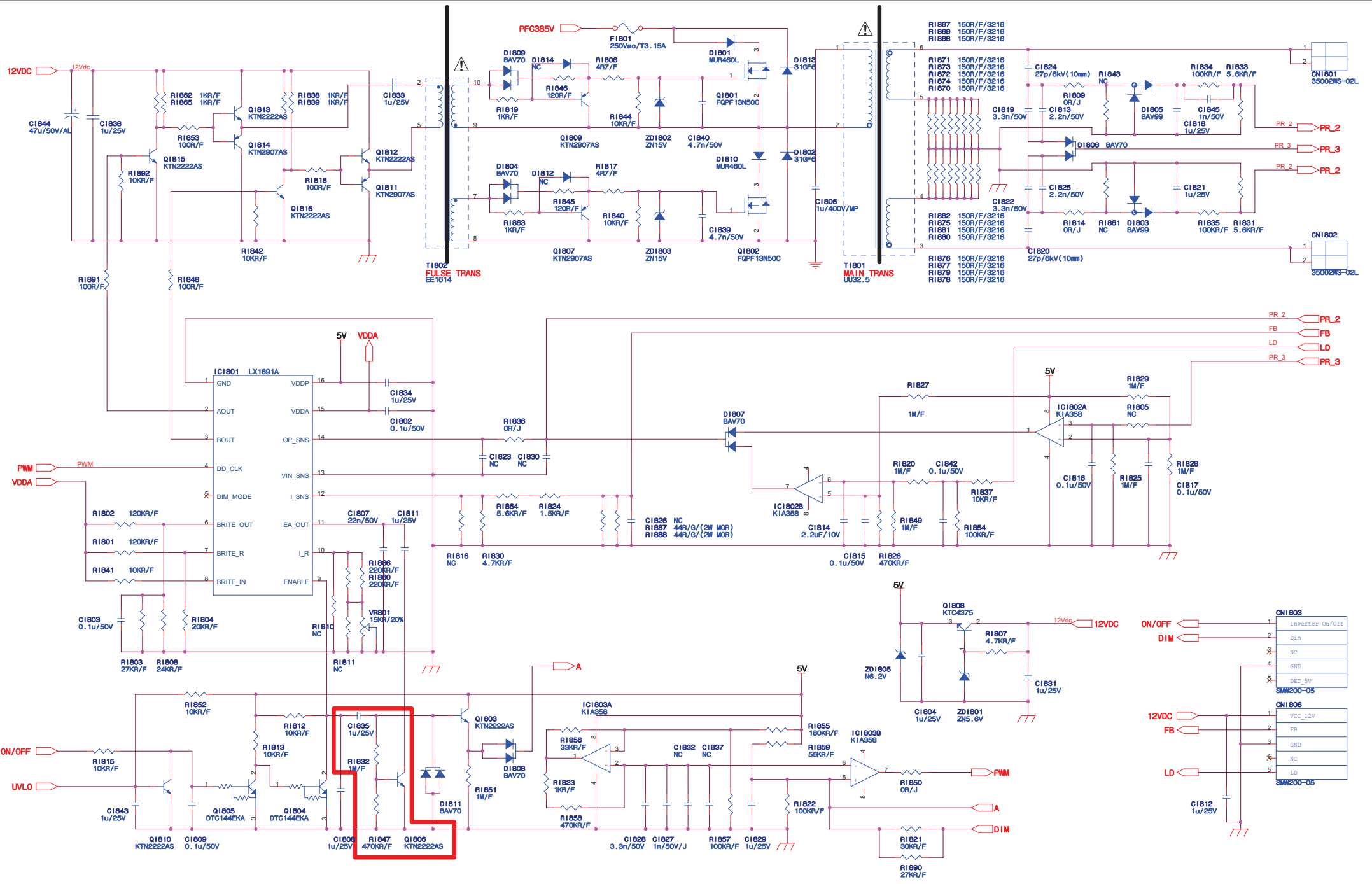
Thursday, July 12, 2007		
Title	PFC	
Size	Document Number	Rev
A3	<Doc>	
Date:	2006_06_07	Sheet 1 of 2

HOT COLD



Thursday, July 12, 2007

SIP400B	
Title	
STB+ MULTI	
Size	Document Number
Custom	<Doc>
Date:	Sheet 2 of 2



SIP400B REV1.1 (R.C)

Title		
Size	Document Number	Rev
Custom		0.2
Date	Tuesday, March 27, 2007	Sheet 1 of 1